

AURALEI

CAT NO. 2053



Inspired by sun-dappled breezes and the softest light, **AURALEI** brings you the effortless beauty of natural calm. Here you'll find classic herringbones, elegant stripes, and delicate waffles that sway gently across a serene palette of warm white, oat, and soft grey. Perfect for creating sheer drapery and blinds for enduring serenity.



STANDARD
100





2053 - 01

SUITABLE FOR: Drapery & Blinds  

COMPOSITION: 46% Cotton, 33% Poly, 21% Viscose

WIDTH: 310 CMS (+/- 10 CMS)

WEIGHT: 108 GSM

VERTICAL DESIGN REPEAT: Nil

HORIZONTAL DESIGN REPEAT: Nil

WASHING INSTRUCTIONS:       

Machine wash at 30°C. Gentle cycle. Hang dry. Do not tumble dry. Iron at medium temperature. Do not bleach. Dry clean.

Fabric with lead band.

*Colour shades may tend to vary between different dye-lots & production batches

*Due to variations in computer screens, images presented are not 100% similar to actual fabrics

AVAILABLE COLOURS



2053 - 29



2053 - 02

SUITABLE FOR: Drapery & Blinds  

COMPOSITION: 58% Cotton, 42% Poly

WIDTH: 310 CMS (+/- 10 CMS)

WEIGHT: 86 GSM

VERTICAL DESIGN REPEAT: Nil

HORIZONTAL DESIGN REPEAT: 0.5 CMS

WASHING INSTRUCTIONS:      

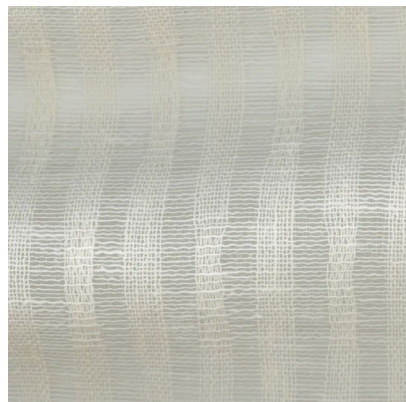
Machine wash at 30°C. Gentle cycle. Hang dry. Do not tumble dry. Iron at medium temperature. Do not bleach. Dry clean.

Fabric with lead band.

*Colour shades may tend to vary between different dye-lots & production batches

*Due to variations in computer screens, images presented are not 100% similar to actual fabrics

AVAILABLE COLOURS



2053 - 24



2053 - 35



2053 - 40



2053 - 45



2053 - 03

SUITABLE FOR: Drapery & Blinds  

COMPOSITION: 60% Cotton, 40% Poly

WIDTH: 310 CMS (+/- 10 CMS)

WEIGHT: 96 GSM

VERTICAL DESIGN REPEAT: Nil

HORIZONTAL DESIGN REPEAT: Nil

WASHING INSTRUCTIONS:      

Machine wash at 30°C. Gentle cycle. Hang dry. Do not tumble dry. Iron at low temperature. Iron on reverse side. Do not bleach. Dry clean.

Fabric with lead band.

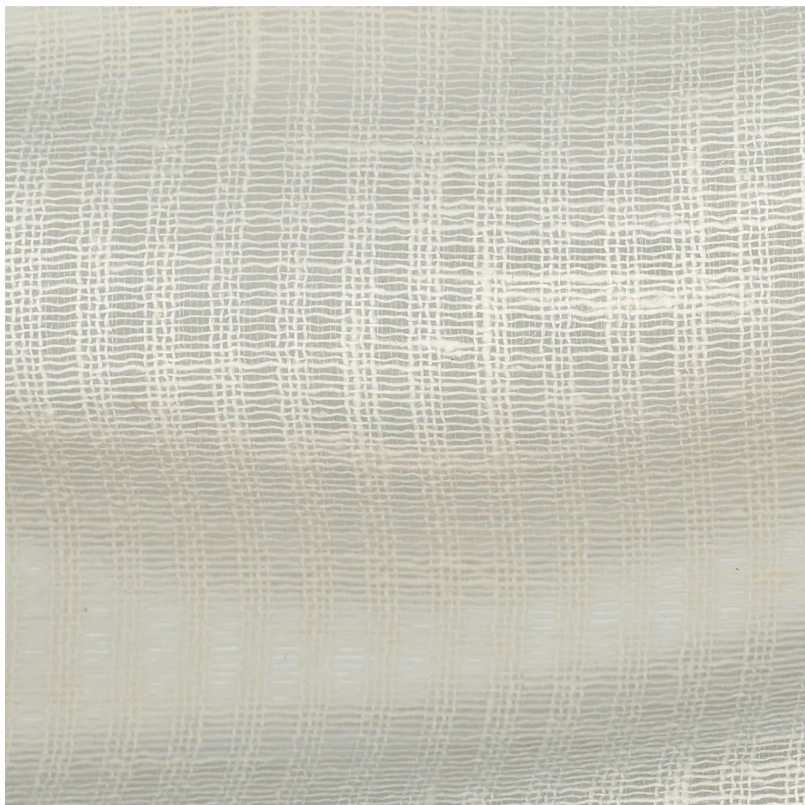
*Colour shades may tend to vary between different dye-lots & production batches

*Due to variations in computer screens, images presented are not 100% similar to actual fabrics

AVAILABLE COLOURS



2053 - 20



2053 - 04

SUITABLE FOR: Drapery & Blinds  

COMPOSITION: 55% Cotton, 45% Poly

WIDTH: 310 CMS (+/- 10 CMS)

WEIGHT: 78 GSM

VERTICAL DESIGN REPEAT: Nil

HORIZONTAL DESIGN REPEAT: 0.5 CMS

WASHING INSTRUCTIONS:      

Machine wash at 40°C. Gentle cycle. Hang dry. Do not tumble dry. Iron at medium temperature. Do not bleach. Dry clean.

Fabric with lead band.

*Colour shades may tend to vary between different dye-lots & production batches

*Due to variations in computer screens, images presented are not 100% similar to actual fabrics

AVAILABLE COLOURS



2053 - 23



2053 - 36



2053 - 47



2053 - 05

SUITABLE FOR: Drapery & Blinds  

COMPOSITION: 55% Cotton, 45% Poly

WIDTH: 310 CMS (+/- 10 CMS)

WEIGHT: 124 GSM

VERTICAL DESIGN REPEAT: Nil

HORIZONTAL DESIGN REPEAT: 3.3 CMS

WASHING INSTRUCTIONS:      

Machine wash at 40°C. Gentle cycle. Hang dry. Do not tumble dry. Iron at medium temperature. Do not bleach. Dry clean.

Fabric with lead band.

*Colour shades may tend to vary between different dye-lots & production batches

*Due to variations in computer screens, images presented are not 100% similar to actual fabrics

AVAILABLE COLOURS

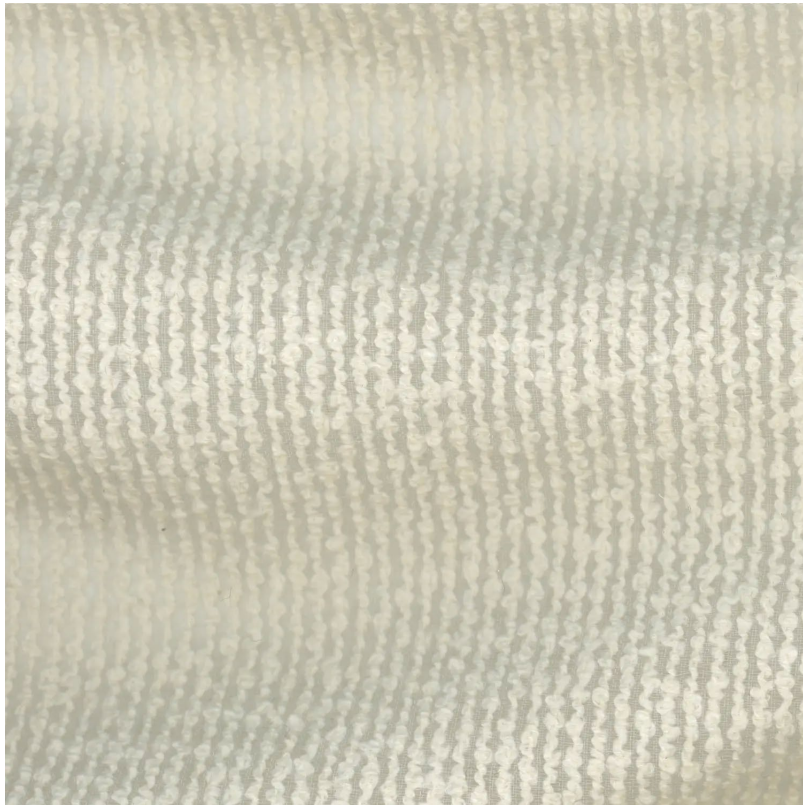


2053 - 22



2053 - 43





2053 - 06

SUITABLE FOR: Drapery & Blinds  

COMPOSITION: Polyester Rayon Natural Fibre

WIDTH: 310 CMS (+/- 10 CMS)

WEIGHT: 126 GSM

VERTICAL DESIGN REPEAT: Nil

HORIZONTAL DESIGN REPEAT: Nil

WASHING INSTRUCTIONS:     

Hang dry. Iron at medium temperature. Do not tumble dry.

Do not bleach. Dry clean.

Fabric with lead band.

*Colour shades may tend to vary between different dye-lots & production batches

*Due to variations in computer screens, images presented are not 100% similar to actual fabrics

AVAILABLE COLOURS



2053 - 15



2053 - 07

SUITABLE FOR: Drapery & Blinds  

COMPOSITION: 54% Cotton, 46% Poly

WIDTH: 310 CMS (+/- 10 CMS)

WEIGHT: 100 GSM

VERTICAL DESIGN REPEAT: Nil

HORIZONTAL DESIGN REPEAT: 5 CMS

WASHING INSTRUCTIONS:      

Machine wash at 30°C. Gentle cycle. Hang dry. Do not tumble dry. Iron at medium temperature. Do not bleach. Dry clean.

Fabric with lead band.

*Colour shades may tend to vary between different dye-lots & production batches

*Due to variations in computer screens, images presented are not 100% similar to actual fabrics

AVAILABLE COLOURS



2053 - 21



2053 - 26



2053 - 08

SUITABLE FOR: Drapery & Blinds  

COMPOSITION: 45% Viscose, 38% Cotton, 17% Poly

WIDTH: 310 CMS (+/- 10 CMS)

WEIGHT: 138 GSM

VERTICAL DESIGN REPEAT: Nil

HORIZONTAL DESIGN REPEAT: 5.5 CMS

WASHING INSTRUCTIONS:       

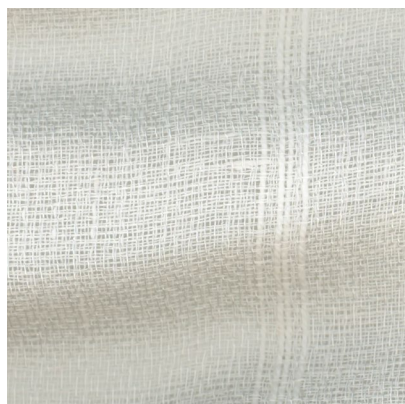
Machine wash at 30°C. Gentle cycle. Hang dry. Do not tumble dry. Iron at medium temperature. Do not bleach. Dry clean.

Fabric with lead band.

*Colour shades may tend to vary between different dye-lots & production batches

*Due to variations in computer screens, images presented are not 100% similar to actual fabrics

AVAILABLE COLOURS



2053 - 28



2053 - 31



2053 - 44



2053 - 09

SUITABLE FOR: Drapery & Blinds  

COMPOSITION: 52% Cotton, 48% Poly

WIDTH: 310 CMS (+/- 10 CMS)

WEIGHT: 72 GSM

VERTICAL DESIGN REPEAT: Nil

HORIZONTAL DESIGN REPEAT: 0.5 CMS

WASHING INSTRUCTIONS:       

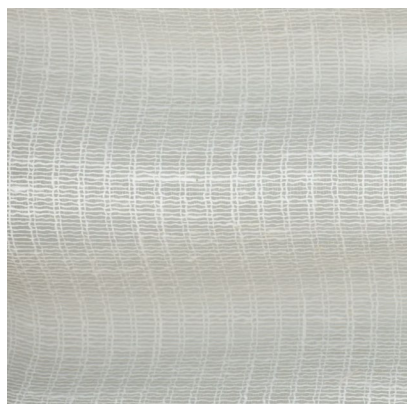
Machine wash at 40°C. Gentle cycle. Hang dry. Do not tumble dry. Iron at medium temperature. Do not bleach. Dry clean.

Fabric with lead band.

*Colour shades may tend to vary between different dye-lots & production batches

*Due to variations in computer screens, images presented are not 100% similar to actual fabrics

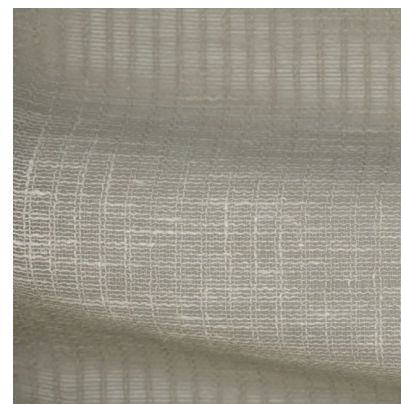
AVAILABLE COLOURS



2053 - 25



2053 - 33



2053 - 46



2053 - 10

SUITABLE FOR: Drapery & Blinds  

COMPOSITION: 77% Poly, 23% Cotton

WIDTH: 310 CMS (+/- 10 CMS)

WEIGHT: 82 GSM

VERTICAL DESIGN REPEAT: Nil

HORIZONTAL DESIGN REPEAT: Nil

WASHING INSTRUCTIONS:      

Machine wash at 40°C. Gentle cycle. Hang dry. Do not tumble dry. Iron at medium temperature. Do not bleach. Dry clean.

Fabric with lead band.

*Colour shades may tend to vary between different dye-lots & production batches

*Due to variations in computer screens, images presented are not 100% similar to actual fabrics

AVAILABLE COLOURS



2053 - 17



2053 - 32



2053 - 38





2053 - 11

SUITABLE FOR: Drapery & Blinds  

COMPOSITION: 55% Cotton, 45% Poly

WIDTH: 310 CMS (+/- 10 CMS)

WEIGHT: 120 GSM

VERTICAL DESIGN REPEAT: Nil

HORIZONTAL DESIGN REPEAT: Nil

WASHING INSTRUCTIONS:      

Machine wash at 40°C. Gentle cycle. Hang dry. Do not tumble dry. Iron at medium temperature. Do not bleach. Dry clean.

Fabric with lead band.

*Colour shades may tend to vary between different dye-lots & production batches

*Due to variations in computer screens, images presented are not 100% similar to actual fabrics

AVAILABLE COLOURS



2053 - 19



2053 - 27



2053 - 41



2053 - 12

SUITABLE FOR: Drapery & Blinds  

COMPOSITION: 68% Poly, 32% Cotton

WIDTH: 310 CMS (+/- 10 CMS)

WEIGHT: 66 GSM

VERTICAL DESIGN REPEAT: Nil

HORIZONTAL DESIGN REPEAT: Nil

WASHING INSTRUCTIONS:      

Machine wash at 40°C. Gentle cycle. Hang dry. Do not tumble dry. Iron at medium temperature. Do not bleach. Dry clean.

Fabric with lead band.

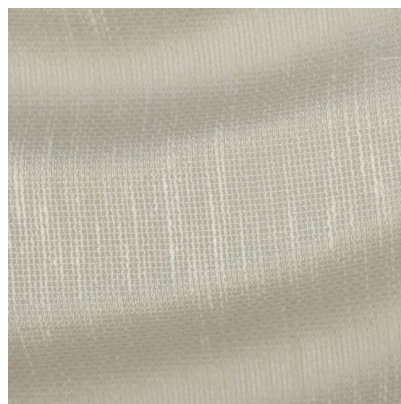
*Colour shades may tend to vary between different dye-lots & production batches

*Due to variations in computer screens, images presented are not 100% similar to actual fabrics

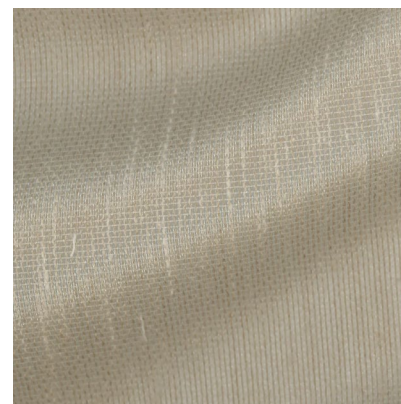
AVAILABLE COLOURS



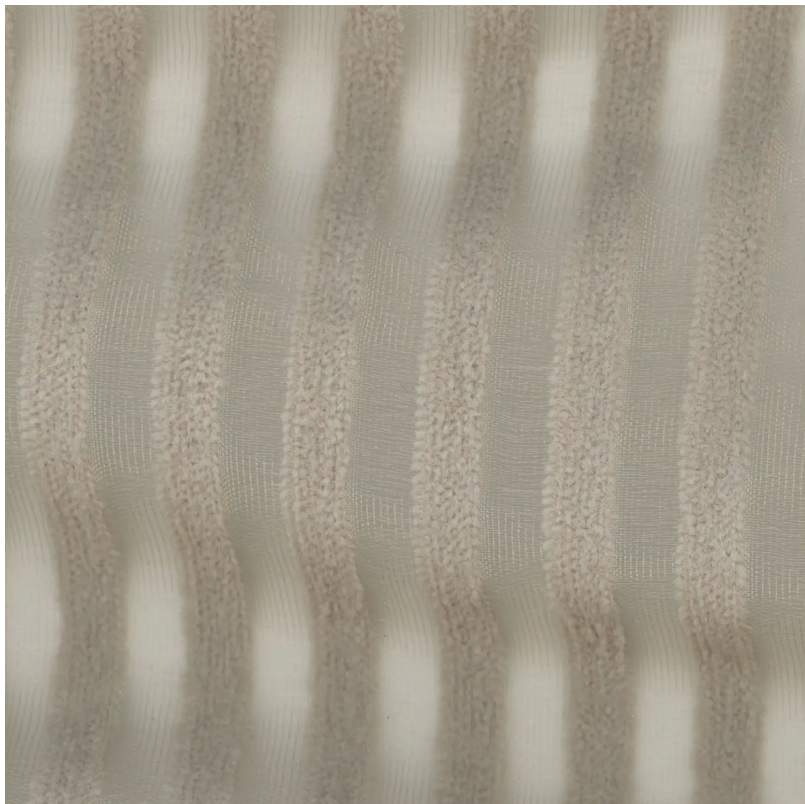
2053 - 30



2053 - 39



2053 - 42



2053 - 13

SUITABLE FOR: Drapery & Blinds  

COMPOSITION: Polyester Rayon Natural Fibre

WIDTH: 310 CMS (+/- 10 CMS)

WEIGHT: 108 GSM

VERTICAL DESIGN REPEAT: Nil

HORIZONTAL DESIGN REPEAT: 1 CM

WASHING INSTRUCTIONS:      

Machine wash at 40°C. Gentle cycle. Hang dry. Do not tumble dry. Iron at medium temperature. Do not bleach. Dry clean.

Fabric with lead band.

*Colour shades may tend to vary between different dye-lots & production batches

*Due to variations in computer screens, images presented are not 100% similar to actual fabrics

AVAILABLE COLOURS



2053 - 16



2053 - 14

SUITABLE FOR: Drapery & Blinds  

COMPOSITION: 56% Cotton, 44% Poly

WIDTH: 310 CMS (+/- 10 CMS)

WEIGHT: 94 GSM

VERTICAL DESIGN REPEAT: Nil

HORIZONTAL DESIGN REPEAT: 3.4 CMS

WASHING INSTRUCTIONS:      

Machine wash at 40°C. Gentle cycle. Hang dry. Do not tumble dry. Iron at medium temperature. Do not bleach. Dry clean.

Fabric with lead band.

*Colour shades may tend to vary between different dye-lots & production batches

*Due to variations in computer screens, images presented are not 100% similar to actual fabrics

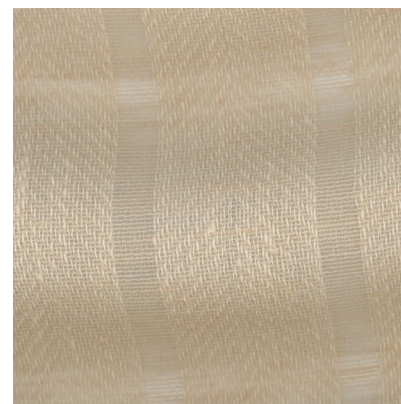
AVAILABLE COLOURS



2053 - 18



2053 - 34



2053 - 37



ULTRA FABRICS

EST. 1990

ULTRA FURNISHING FABRICS FZCO

Unit 262. Dubai Textile City
Al Warsan 1, Dubai, UAE

Follow our socials
ultrafabrics.ae



www.ultrafabrics.ae