



ECHO

CAT NO. 2054

ECHO embraces abstract and geometric patterns in organic form. Pairing earthy tones—like sand, sage green, and peach—helps create a harmonious resonance and dynamic atmosphere in any interior. Together, these refined hues and delicate patterns gently echo the quiet beauty of nature, adding layers of depth to every space.



STANDARD
100





2054 - 01

SUITABLE FOR: Drapery & Soft Upholstery  

COMPOSITION: Polyester Rayon Natural Fibre

WIDTH: 140 CMS (+/- 5 CMS)

WEIGHT: 240 GSM

VERTICAL DESIGN REPEAT: 50.2 CMS

HORIZONTAL DESIGN REPEAT: 23.6 CMS

WASHING INSTRUCTIONS:     

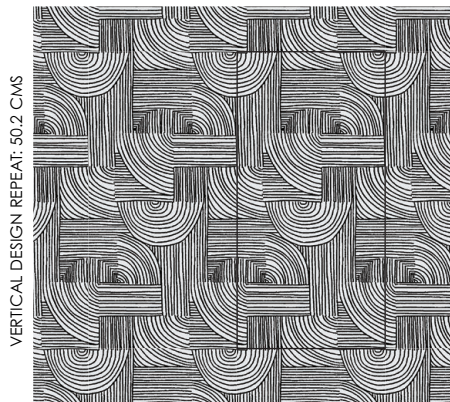
Machine wash at 30°C. Do not tumble dry.

Iron at low temperature. Do not bleach. Dry clean.

*Colour shades may tend to vary between different dye-lots & production batches

*Due to variations in computer screens, images presented are not 100% similar to actual fabrics

AVAILABLE COLOURS



VERTICAL DESIGN REPEAT: 50.2 CMS

HORIZONTAL DESIGN REPEAT: 23.6 CMS

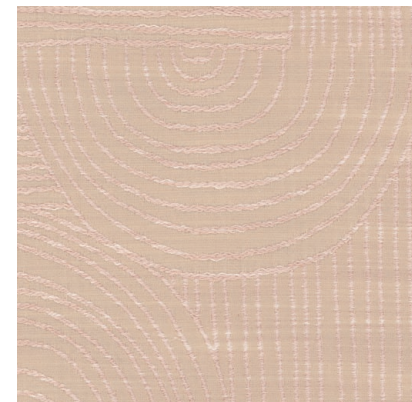
DESIGN



2054 - 30



2054 - 35



2054 - 70



2054 - 02

SUITABLE FOR: Drapery & Soft Upholstery  

COMPOSITION: 60% Polyester Filament, 40% Poly Spun

WIDTH: 140 CMS (+/- 5 CMS)

WEIGHT: 295 GSM

VERTICAL DESIGN REPEAT: 32.5 CMS

HORIZONTAL DESIGN REPEAT: 23.4 CMS

WASHING INSTRUCTIONS:     

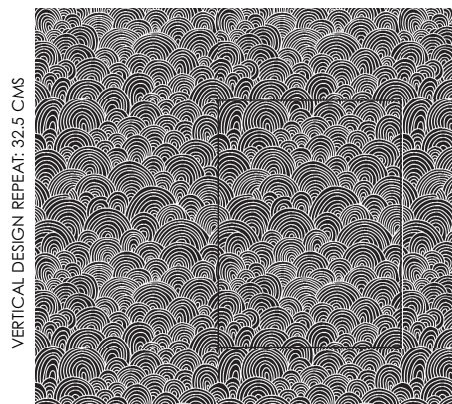
Machine wash at 30°C. Do not tumble dry.

Iron at low temperature. Do not bleach. Dry clean.

*Colour shades may tend to vary between different dye-lots & production batches

*Due to variations in computer screens, images presented are not 100% similar to actual fabrics

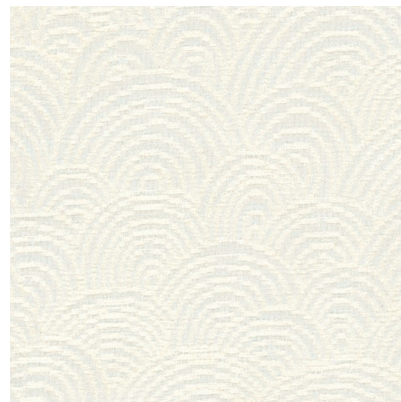
AVAILABLE COLOURS



VERTICAL DESIGN REPEAT: 32.5 CMS

HORIZONTAL DESIGN REPEAT: 23.4 CMS

DESIGN



2054 - 24



2054 - 32



2054 - 03

SUITABLE FOR: Drapery & Soft Upholstery  

COMPOSITION: 98% Poly Filament, 2% Cotton Spun

WIDTH: 140 CMS (+/- 5 CMS)

WEIGHT: 235 GSM

VERTICAL DESIGN REPEAT: Nil

HORIZONTAL DESIGN REPEAT: Nil

WASHING INSTRUCTIONS:      

Machine wash at 30°C. Do not tumble dry.

Iron at low temperature. Do not bleach. Dry clean.

*Colour shades may tend to vary between different dye-lots & production batches

*Due to variations in computer screens, images presented are not 100% similar to actual fabrics

AVAILABLE COLOURS



2054 - 41



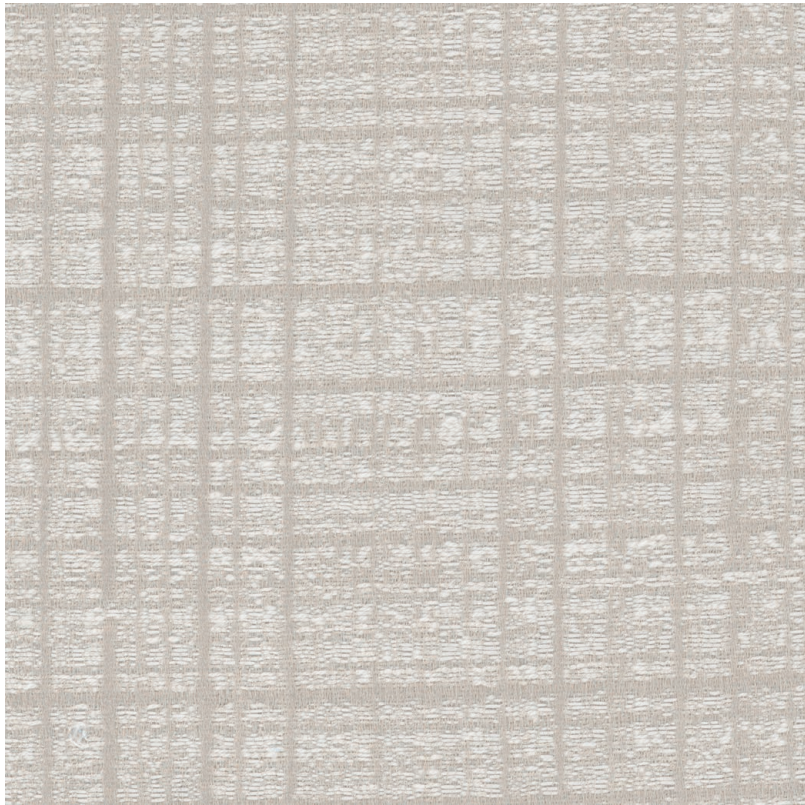
2054 - 51



2054 - 65



2054 - 71



2054 - 04

SUITABLE FOR: Drapery & Soft Upholstery  

COMPOSITION: 55% Poly Filament, 23% Cotton Spun, 22% Poly Spun

WIDTH: 140 CMS (+/- 5 CMS)

WEIGHT: 265 GSM

VERTICAL DESIGN REPEAT: Nil

HORIZONTAL DESIGN REPEAT: Nil

WASHING INSTRUCTIONS:      

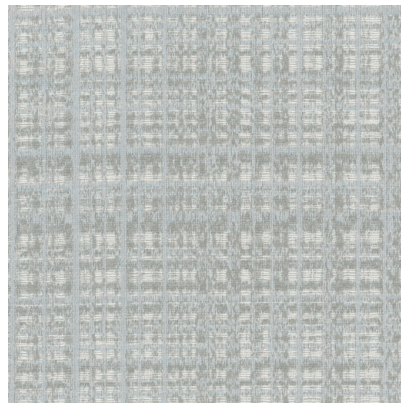
Machine wash at 30°C. Do not tumble dry.

Iron at low temperature. Do not bleach. Dry clean.

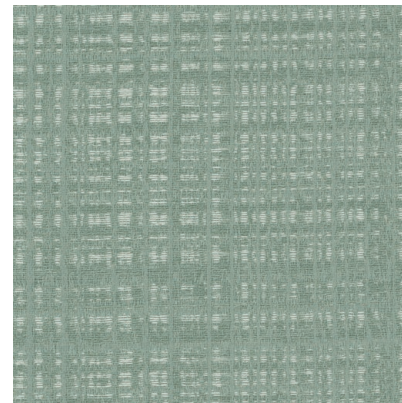
*Colour shades may tend to vary between different dye-lots & production batches

*Due to variations in computer screens, images presented are not 100% similar to actual fabrics

AVAILABLE COLOURS



2054 - 59



2054 - 67



2054 - 05

SUITABLE FOR: Drapery & Soft Upholstery  

COMPOSITION: 39% Poly Filament, 20% Cotton Spun, 29% Poly Spun

WIDTH: 140 CMS (+/- 5 CMS)

WEIGHT: 260 GSM

VERTICAL DESIGN REPEAT: 44 CMS

HORIZONTAL DESIGN REPEAT: 24.6 CMS

WASHING INSTRUCTIONS:     

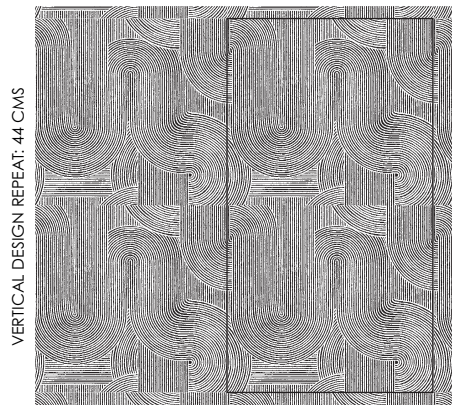
Machine wash at 30°C. Do not tumble dry.

Iron at low temperature. Do not bleach. Dry clean.

*Colour shades may tend to vary between different dye-lots & production batches

*Due to variations in computer screens, images presented are not 100% similar to actual fabrics

AVAILABLE COLOURS



VERTICAL DESIGN REPEAT: 44 CMS

HORIZONTAL DESIGN REPEAT: 24.6 CMS

DESIGN



2054 - 36



2054 - 64





2054 - 06

SUITABLE FOR: Drapery & Soft Upholstery  

COMPOSITION: 62% Poly Filament, 20% Cotton Spun, 18% Poly Spun

WIDTH: 140 CMS (+/- 5 CMS)

WEIGHT: 230 GSM

VERTICAL DESIGN REPEAT: 27.1 CMS

HORIZONTAL DESIGN REPEAT: 23.6 CMS

WASHING INSTRUCTIONS:      

Machine wash at 30°C. Do not tumble dry.

Iron at low temperature. Do not bleach. Dry clean.

*Colour shades may tend to vary between different dye-lots & production batches

*Due to variations in computer screens, images presented are not 100% similar to actual fabrics

AVAILABLE COLOURS



VERTICAL DESIGN REPEAT: 27.1 CMS

HORIZONTAL DESIGN REPEAT: 23.6 CMS

DESIGN



2054 - 21



2054 - 62



2054 - 07

SUITABLE FOR: Drapery & Soft Upholstery  

COMPOSITION: 33% Cotton Spun, 67% Polyester Filament

WIDTH: 140 CMS (+/- 5 CMS)

WEIGHT: 230 GSM

VERTICAL DESIGN REPEAT: Nil

HORIZONTAL DESIGN REPEAT: Nil

WASHING INSTRUCTIONS:      

Machine wash at 30°C. Do not tumble dry.

Iron at low temperature. Do not bleach. Dry clean.

*Colour shades may tend to vary between different dye-lots & production batches

*Due to variations in computer screens, images presented are not 100% similar to actual fabrics

AVAILABLE COLOURS



2054 - 47



2054 - 58



2054 - 08

SUITABLE FOR: Drapery & Soft Upholstery  

COMPOSITION: 46% Poly Filament, 28% Cotton Spun, 26% Poly Spun

WIDTH: 140 CMS (+/- 5 CMS)

WEIGHT: 260 GSM

VERTICAL DESIGN REPEAT: Nil

HORIZONTAL DESIGN REPEAT: Nil

WASHING INSTRUCTIONS:      

Machine wash at 30°C. Do not tumble dry.

Iron at low temperature. Do not bleach. Dry clean.

*Colour shades may tend to vary between different dye-lots & production batches

*Due to variations in computer screens, images presented are not 100% similar to actual fabrics

AVAILABLE COLOURS



2054 - 29



2054 - 44



2054 - 56



2054 - 60



2054 - 09

SUITABLE FOR: Drapery & Soft Upholstery  

COMPOSITION: 51% Poly Filament, 49% Cationic Spun

WIDTH: 140 CMS (+/- 5 CMS)

WEIGHT: 215 GSM

VERTICAL DESIGN REPEAT: Nil

HORIZONTAL DESIGN REPEAT: Nil

WASHING INSTRUCTIONS:      

Machine wash at 30°C. Do not tumble dry.

Iron at low temperature. Do not bleach. Dry clean.

*Colour shades may tend to vary between different dye-lots & production batches

*Due to variations in computer screens, images presented are not 100% similar to actual fabrics

AVAILABLE COLOURS



2054 - 55



2054 - 61



2054 - 68



2054 - 10

SUITABLE FOR: Drapery & Soft Upholstery  

COMPOSITION: 51% Poly Filament, 49% Cationic Spun

WIDTH: 140 CMS (+/- 5 CMS)

WEIGHT: 215 GSM

VERTICAL DESIGN REPEAT: Nil

HORIZONTAL DESIGN REPEAT: Nil

WASHING INSTRUCTIONS:      

Machine wash at 30°C. Do not tumble dry.

Iron at low temperature. Do not bleach. Dry clean.

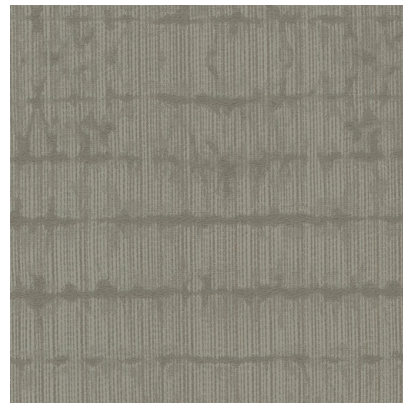
*Colour shades may tend to vary between different dye-lots & production batches

*Due to variations in computer screens, images presented are not 100% similar to actual fabrics

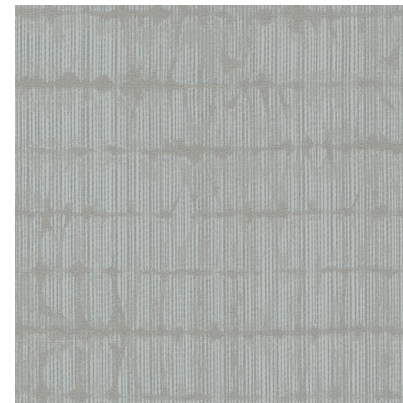
AVAILABLE COLOURS



2054 - 38



2054 - 50



2054 - 54



2054 - 11

SUITABLE FOR: Drapery & Soft Upholstery  

COMPOSITION: 57% Poly Filament, 22% Cotton Spun, 21% Poly Spun

WIDTH: 140 CMS (+/- 5 CMS)

WEIGHT: 215 GSM

VERTICAL DESIGN REPEAT: 24.5 CMS

HORIZONTAL DESIGN REPEAT: 23.4 CMS

WASHING INSTRUCTIONS:      

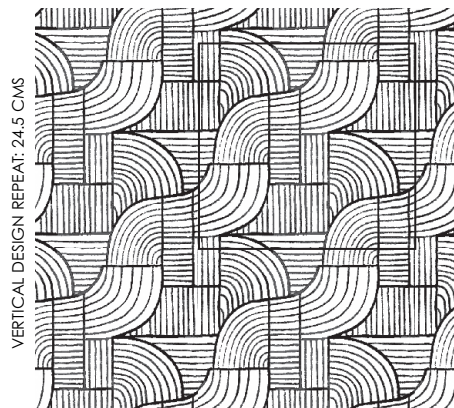
Machine wash at 30°C. Do not tumble dry.

Iron at low temperature. Do not bleach. Dry clean.

*Colour shades may tend to vary between different dye-lots & production batches

*Due to variations in computer screens, images presented are not 100% similar to actual fabrics

AVAILABLE COLOURS



VERTICAL DESIGN REPEAT: 24.5 CMS

HORIZONTAL DESIGN REPEAT: 23.4 CMS

DESIGN



2054 - 18



2054 - 37

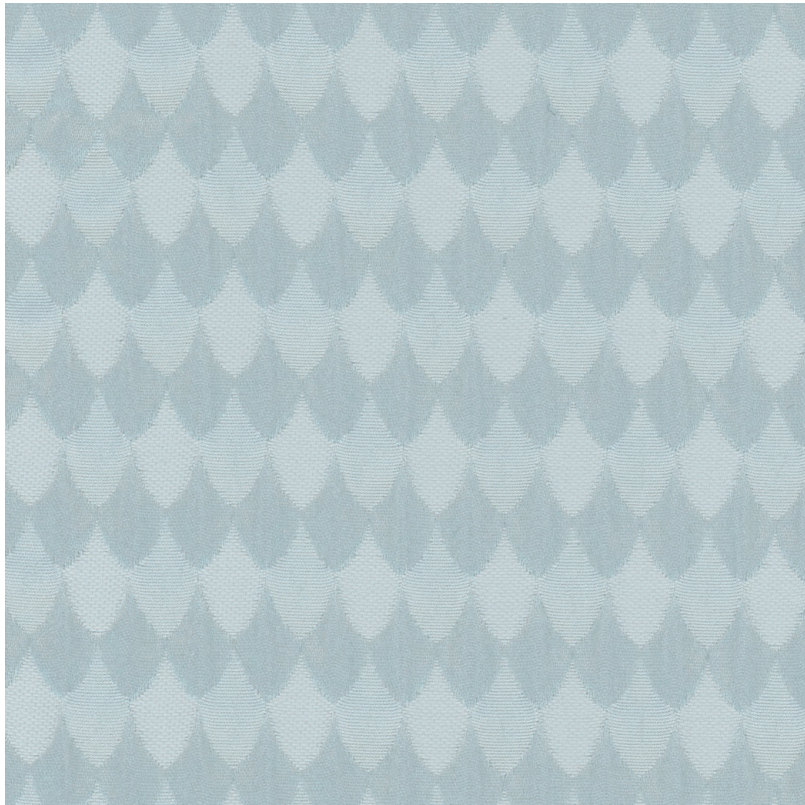


2054 - 43



2054 - 63





2054 - 12

SUITABLE FOR: Drapery & Soft Upholstery  

COMPOSITION: Polyester Rayon Natural Fibre

WIDTH: 140 CMS (+/- 5 CMS)

WEIGHT: 180 GSM

VERTICAL DESIGN REPEAT: 4.0 CMS

HORIZONTAL DESIGN REPEAT: 2.1 CMS

WASHING INSTRUCTIONS:      

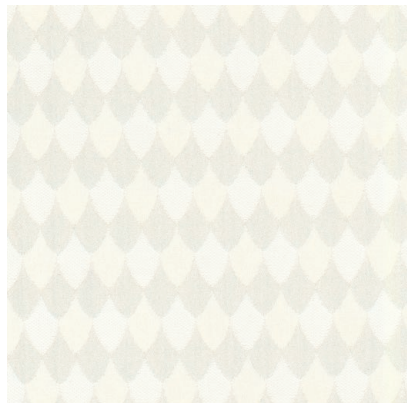
Machine wash at 30°C. Do not tumble dry.

Iron at low temperature. Do not bleach. Dry clean.

*Colour shades may tend to vary between different dye-lots & production batches

*Due to variations in computer screens, images presented are not 100% similar to actual fabrics

AVAILABLE COLOURS



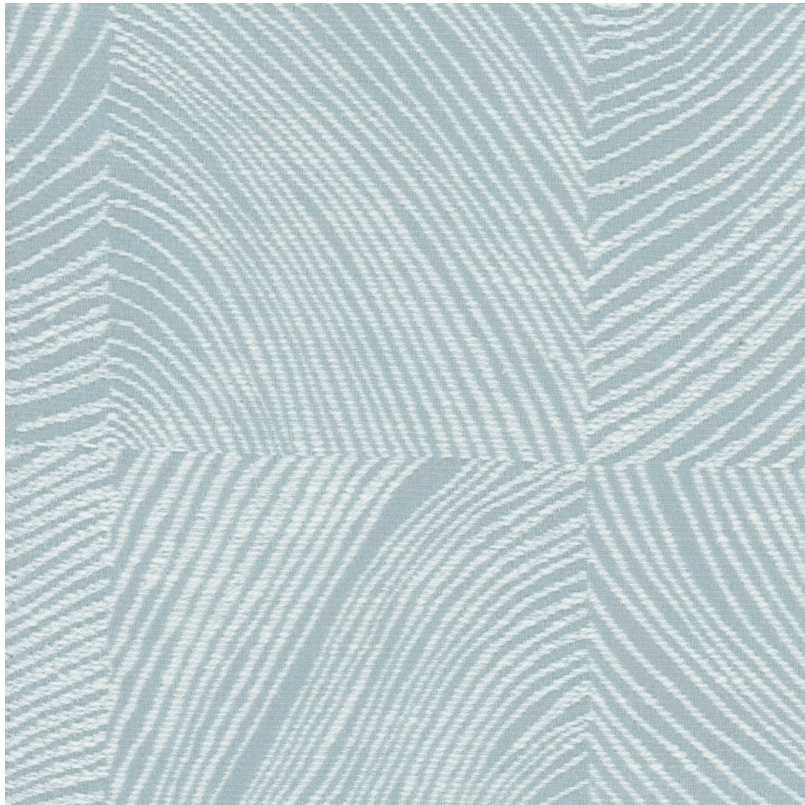
2054 - 26



2054 - 28



2054 - 57



2054 - 13

SUITABLE FOR: Drapery & Soft Upholstery  

COMPOSITION: 62% Poly Filament, 20% Cotton Spun, 18% Poly Spun

WIDTH: 140 CMS (+/- 5 CMS)

WEIGHT: 230 GSM

VERTICAL DESIGN REPEAT: 33.5 CMS

HORIZONTAL DESIGN REPEAT: 23.8 CMS

WASHING INSTRUCTIONS:     

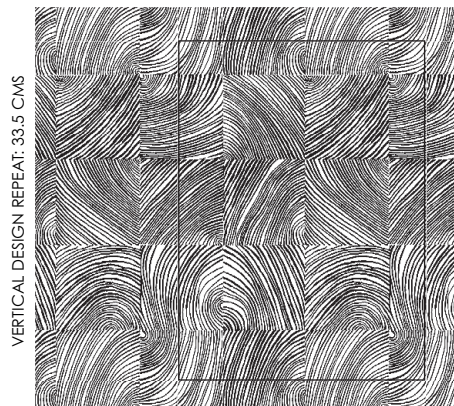
Machine wash at 30°C. Do not tumble dry.

Iron at low temperature. Do not bleach. Dry clean.

*Colour shades may tend to vary between different dye-lots & production batches

*Due to variations in computer screens, images presented are not 100% similar to actual fabrics

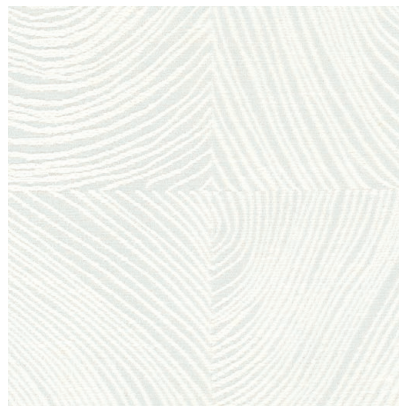
AVAILABLE COLOURS



VERTICAL DESIGN REPEAT: 33.5 CMS

HORIZONTAL DESIGN REPEAT: 23.8 CMS

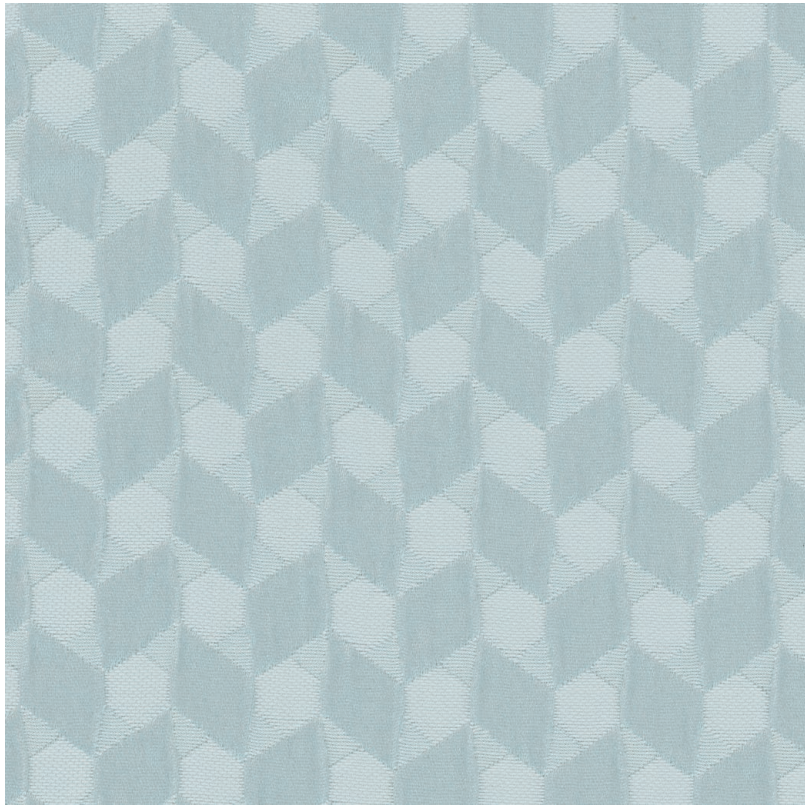
DESIGN



2054 - 20



2054 - 42



2054 - 14

SUITABLE FOR: Drapery & Soft Upholstery  

COMPOSITION: Polyester Rayon Natural Fibre

WIDTH: 140 CMS (+/- 5 CMS)

WEIGHT: 180 GSM

VERTICAL DESIGN REPEAT: 2.5 CMS

HORIZONTAL DESIGN REPEAT: 2.3 CMS

WASHING INSTRUCTIONS:      

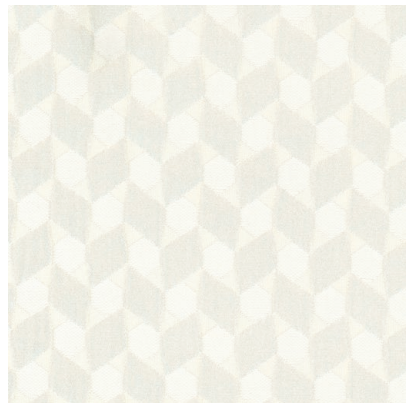
Machine wash at 30°C. Do not tumble dry.

Iron at low temperature. Do not bleach. Dry clean.

*Colour shades may tend to vary between different dye-lots & production batches

*Due to variations in computer screens, images presented are not 100% similar to actual fabrics

AVAILABLE COLOURS



2054 - 25



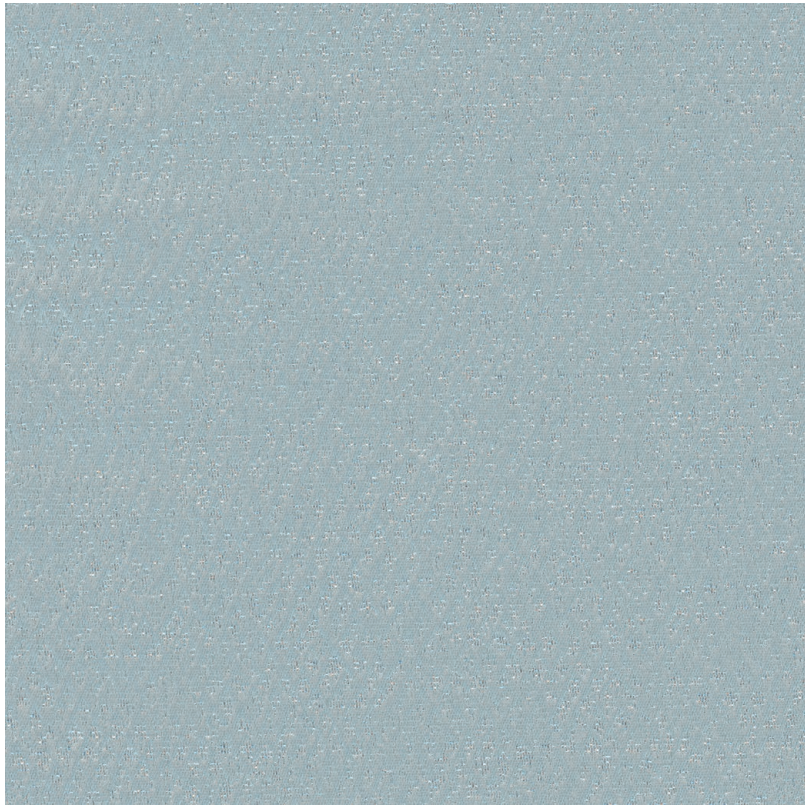
2054 - 33



2054 - 45



2054 - 53



2054 - 15

SUITABLE FOR: Drapery & Soft Upholstery  

COMPOSITION: Polyester Rayon Natural Fibre

WIDTH: 140 CMS (+/- 5 CMS)

WEIGHT: 190 GSM

VERTICAL DESIGN REPEAT: Nil

HORIZONTAL DESIGN REPEAT: Nil

WASHING INSTRUCTIONS:      

Machine wash at 30°C. Do not tumble dry.

Iron at low temperature. Do not bleach. Dry clean.

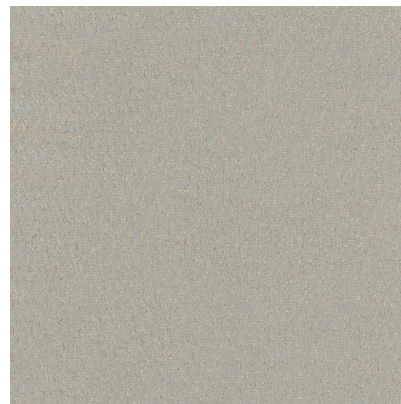
*Colour shades may tend to vary between different dye-lots & production batches

*Due to variations in computer screens, images presented are not 100% similar to actual fabrics

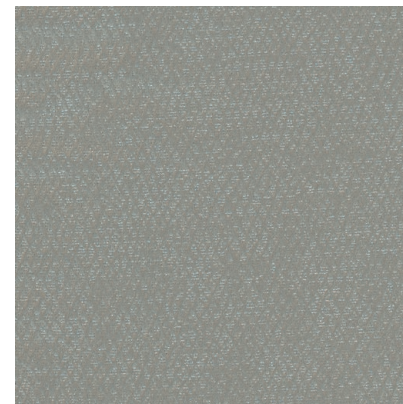
AVAILABLE COLOURS



2054 - 27



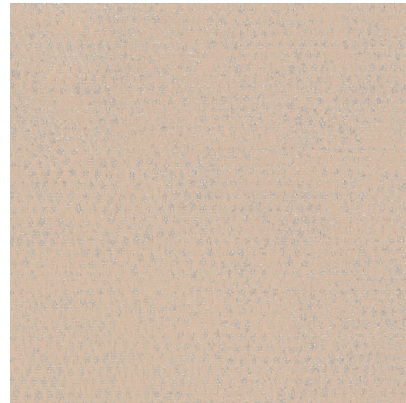
2054 - 46



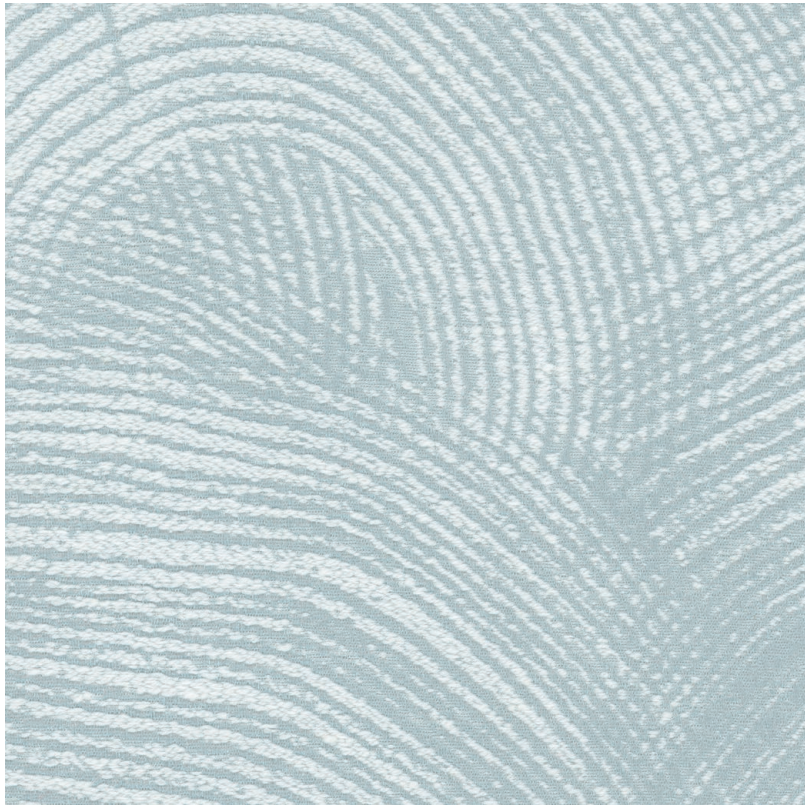
2054 - 52



2054 - 66



2054 - 69



2054 - 16

SUITABLE FOR: Drapery & Soft Upholstery  

COMPOSITION: 78% Poly Filament, 11% Cotton Spun, 11% Poly Spun

WIDTH: 140 CMS (+/- 5 CMS)

WEIGHT: 215 GSM

VERTICAL DESIGN REPEAT: 44.5 CMS

HORIZONTAL DESIGN REPEAT: 23.6 CMS

WASHING INSTRUCTIONS:      

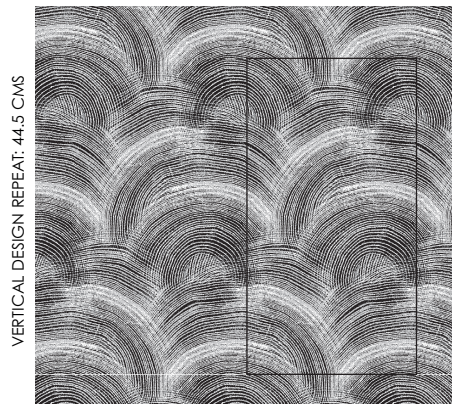
Machine wash at 30°C. Do not tumble dry.

Iron at low temperature. Do not bleach. Dry clean.

*Colour shades may tend to vary between different dye-lots & production batches

*Due to variations in computer screens, images presented are not 100% similar to actual fabrics

AVAILABLE COLOURS



VERTICAL DESIGN REPEAT: 44.5 CMS

HORIZONTAL DESIGN REPEAT: 23.6 CMS

DESIGN



2054 - 23



2054 - 31



2054 - 40



2054 - 48





2054 - 17

SUITABLE FOR: Drapery & Soft Upholstery  

COMPOSITION: 55% Poly Filament, 23% Cotton Spun, 22% Poly Spun

WIDTH: 140 CMS (+/- 5 CMS)

WEIGHT: 265 GSM

VERTICAL DESIGN REPEAT: 35.3 CMS

HORIZONTAL DESIGN REPEAT: 23.4 CMS

WASHING INSTRUCTIONS:      

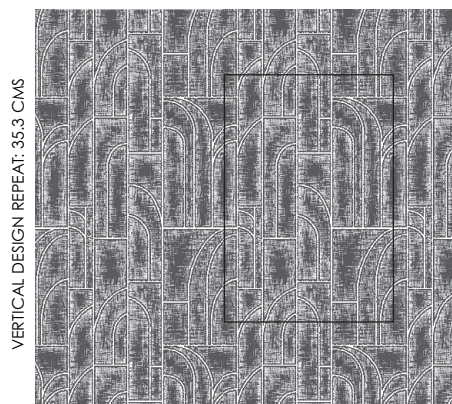
Machine wash at 30°C. Do not tumble dry.

Iron at low temperature. Do not bleach. Dry clean.

*Colour shades may tend to vary between different dye-lots & production batches

*Due to variations in computer screens, images presented are not 100% similar to actual fabrics

AVAILABLE COLOURS



VERTICAL DESIGN REPEAT: 35.3 CMS

HORIZONTAL DESIGN REPEAT: 23.4 CMS

DESIGN



2054 - 19



2054 - 22



2054 - 34



2054 - 39



2054 - 49



ULTRA FABRICS

EST. 1990

ULTRA FURNISHING FABRICS FZCO

Unit 262. Dubai Textile City
Al Warsan 1, Dubai, UAE

Follow our socials
ultrafabrics.ae



www.ultrafabrics.ae