



FLAX

CAT NO. 2051

Bring the visual essence of sun-kissed fields into your space with **FLAX**. Its natural textures evoke the softness of a wheatfield breeze, creating a warm and grounded atmosphere in any room. Presented in an earthy palette that includes cereal white, oatmeal, and cloud grey, this drapery and soft upholstery fabric collection adds a layer of quiet beauty that enhances the natural charm of your home.



STANDARD
100





2051 - 01

SUITABLE FOR: Drapery & Soft Upholstery  

COMPOSITION: 65% Polyester, 25% Cotton, 10% Linen

WIDTH: 140 CMS (+/- 5 CMS)

WEIGHT: 255 GSM

VERTICAL DESIGN REPEAT: Nil

HORIZONTAL DESIGN REPEAT: Nil

WASHING INSTRUCTIONS:     

Machine wash at 30°C. Gentle cycle. Tumble dry low.

Iron at low temperature. Do not bleach. Dry clean.

*Colour shades may tend to vary between different dye-lots & production batches

*Due to variations in computer screens, images presented are not 100% similar to actual fabrics

AVAILABLE COLOURS



2051 - 02



2051 - 03



2051 - 04



2051 - 05

SUITABLE FOR: Drapery & Soft Upholstery  

COMPOSITION: 92% Polyester, 8% Linen

WIDTH: 140 CMS (+/- 5 CMS)

WEIGHT: 245 GSM

VERTICAL DESIGN REPEAT: Nil

HORIZONTAL DESIGN REPEAT: Nil

WASHING INSTRUCTIONS:     

Machine wash at 30°C. Gentle cycle. Tumble dry low.

Iron at low temperature. Do not bleach. Dry clean.

*Colour shades may tend to vary between different dye-lots & production batches

*Due to variations in computer screens, images presented are not 100% similar to actual fabrics

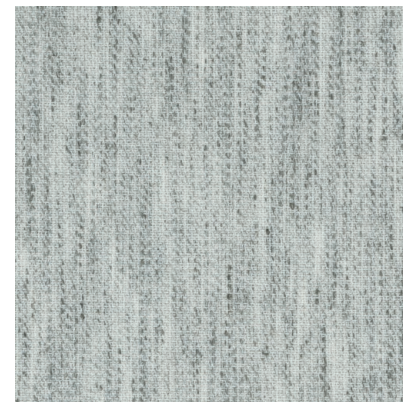
AVAILABLE COLOURS



2051 - 06



2051 - 07



2051 - 08



2051 - 09

SUITABLE FOR: Drapery & Soft Upholstery  

COMPOSITION: 92% Polyester, 8% Linen

WIDTH: 140 CMS (+/- 5 CMS)

WEIGHT: 330 GSM

VERTICAL DESIGN REPEAT: Nil

HORIZONTAL DESIGN REPEAT: Nil

WASHING INSTRUCTIONS:     

Machine wash at 30°C. Gentle cycle. Tumble dry low.

Iron at low temperature. Do not bleach. Dry clean.

*Colour shades may tend to vary between different dye-lots & production batches

*Due to variations in computer screens, images presented are not 100% similar to actual fabrics

AVAILABLE COLOURS



2051 - 10



2051 - 11



2051 - 12





2051 - 13

SUITABLE FOR: Drapery & Soft Upholstery  

COMPOSITION: 54% Cotton, 40% Polyester, 6% Linen

WIDTH: 140 CMS (+/- 5 CMS)

WEIGHT: 230 GSM

VERTICAL DESIGN REPEAT: Nil

HORIZONTAL DESIGN REPEAT: Nil

WASHING INSTRUCTIONS:     

Machine wash at 30°C. Gentle cycle. Tumble dry low.

Iron at low temperature. Do not bleach. Dry clean.

*Colour shades may tend to vary between different dye-lots & production batches

*Due to variations in computer screens, images presented are not 100% similar to actual fabrics

AVAILABLE COLOURS



2051 - 14



2051 - 15



2051 - 16



2051 - 17



2051 - 18

SUITABLE FOR: Drapery & Soft Upholstery  

COMPOSITION: 59% Polyester, 41% Cotton

WIDTH: 140 CMS (+/- 5 CMS)

WEIGHT: 190 GSM

VERTICAL DESIGN REPEAT: Nil

HORIZONTAL DESIGN REPEAT: Nil

WASHING INSTRUCTIONS:     

Machine wash at 30°C. Gentle cycle. Tumble dry low.

Iron at low temperature. Do not bleach. Dry clean.

*Colour shades may tend to vary between different dye-lots & production batches

*Due to variations in computer screens, images presented are not 100% similar to actual fabrics

AVAILABLE COLOURS



2051 - 19



2051 - 20



2051 - 21



2051 - 22

SUITABLE FOR: Drapery & Soft Upholstery  

COMPOSITION: Polyester Rayon Natural Fibre

WIDTH: 140 CMS (+/- 5 CMS)

WEIGHT: 250 GSM

VERTICAL DESIGN REPEAT: Nil

HORIZONTAL DESIGN REPEAT: Nil

WASHING INSTRUCTIONS:     

Machine wash at 30°C. Gentle cycle. Tumble dry low.

Iron at low temperature. Do not bleach. Dry clean.

*Colour shades may tend to vary between different dye-lots & production batches

*Due to variations in computer screens, images presented are not 100% similar to actual fabrics

AVAILABLE COLOURS



2051 - 23



2051 - 24



2051 - 25





ULTRA FABRICS

EST. 1990

ULTRA FURNISHING FABRICS FZCO

Unit 262. Dubai Textile City
Al Warsan 1, Dubai, UAE

Follow our socials
ultrafabrics.ae



www.ultrafabrics.ae