

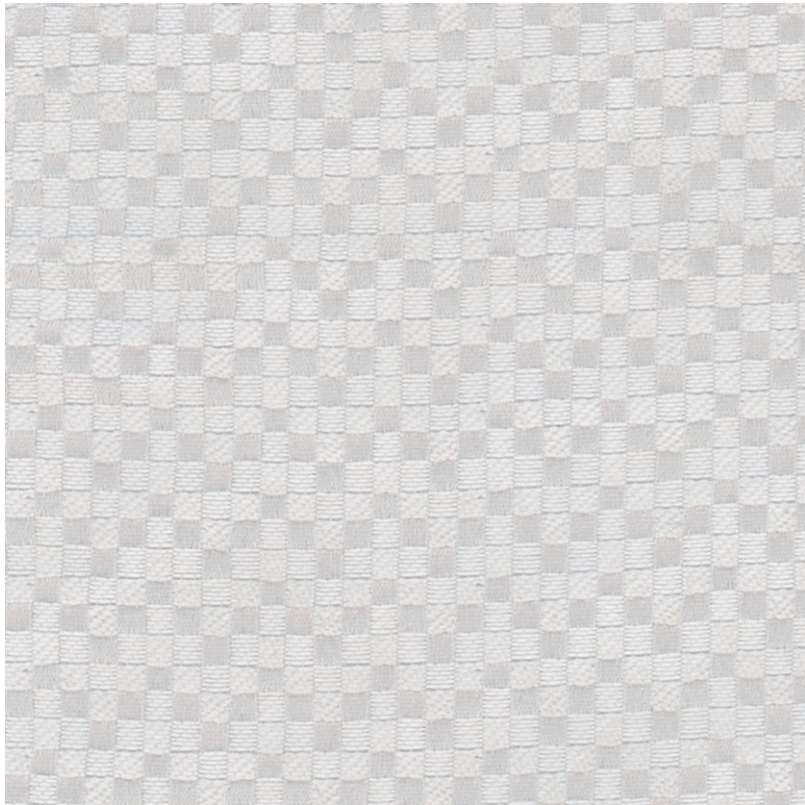
FACET

CAT NO. 2049



From mini triangles and dots to bold line patterns, **FACET** offers drapery and soft upholstery fabrics in neutral and earthy shades, along with peach and duck egg. This collection brings a sophisticated, multi-dimensional aesthetic to your space with both matte and shiny prints. Perfect for creating a refined, modern atmosphere, that is ideal for both contemporary and classic settings.





2049 - 01

SUITABLE FOR: Drapery & Soft Upholstery  

COMPOSITION: Polyester Rayon Natural Fiber

WIDTH: 140 CMS (+/- 5 CMS)

WEIGHT: 230 GSM

VERTICAL DESIGN REPEAT: 1.1 CMS

HORIZONTAL DESIGN REPEAT: 1.5 CMS

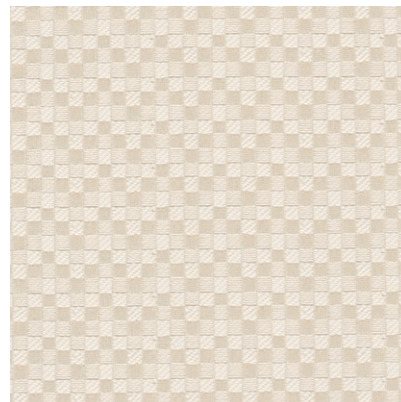
WASHING INSTRUCTIONS:     

Machine wash at 40°C. Tumble dry low. Iron at low temperature.
Non chlorine bleach. Dry clean.

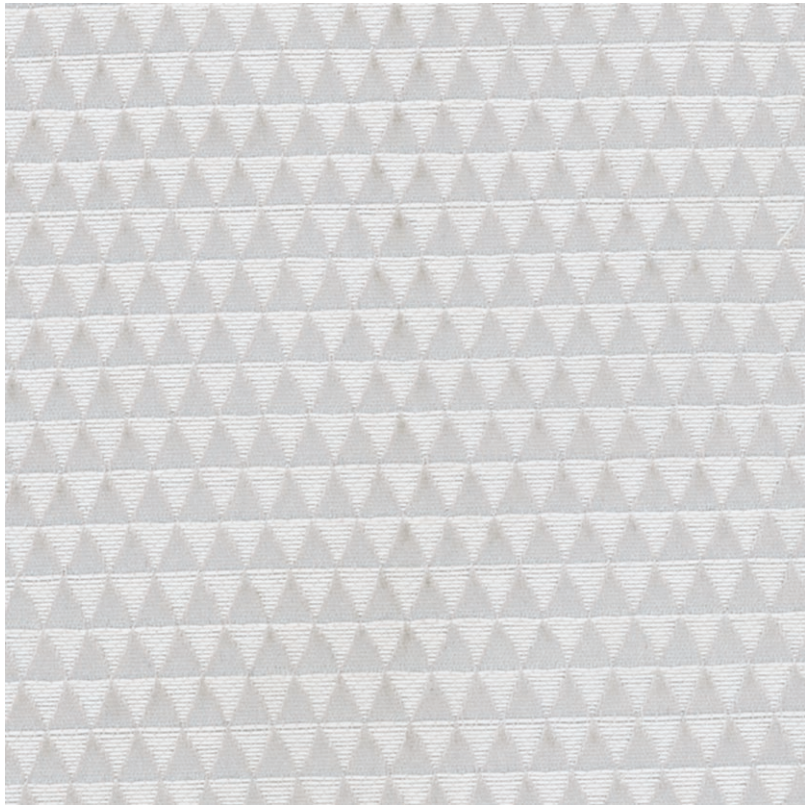
*Colour shades may tend to vary between different dye-lots & production batches

*Due to variations in computer screens, images presented are not 100% similar to actual fabrics

AVAILABLE COLOURS



2049 - 22



2049 - 02

SUITABLE FOR: Drapery & Soft Upholstery  

COMPOSITION: Polyester Rayon Natural Fiber

WIDTH: 140 CMS (+/- 5 CMS)

WEIGHT: 230 GSM

VERTICAL DESIGN REPEAT: 1.4 CMS

HORIZONTAL DESIGN REPEAT: 0.6 CMS

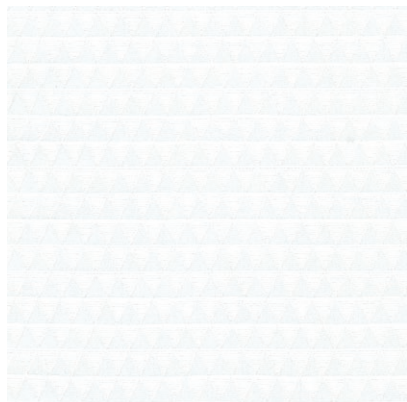
WASHING INSTRUCTIONS:     

Machine wash at 40°C. Tumble dry low. Iron at low temperature.
Non chlorine bleach. Dry clean.

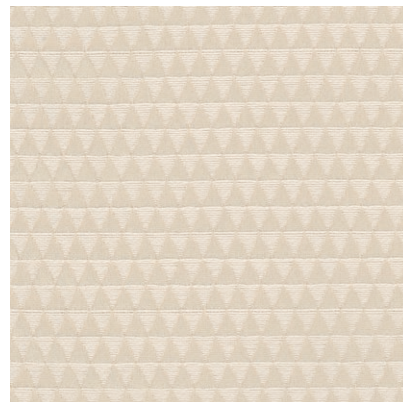
*Colour shades may tend to vary between different dye-lots & production batches

*Due to variations in computer screens, images presented are not 100% similar to actual fabrics

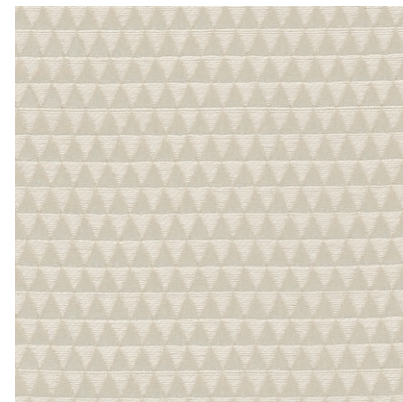
AVAILABLE COLOURS



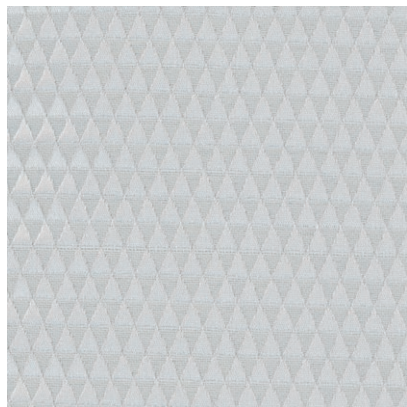
2049 - 17



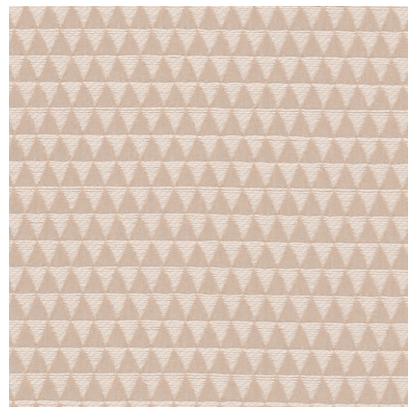
2049 - 21



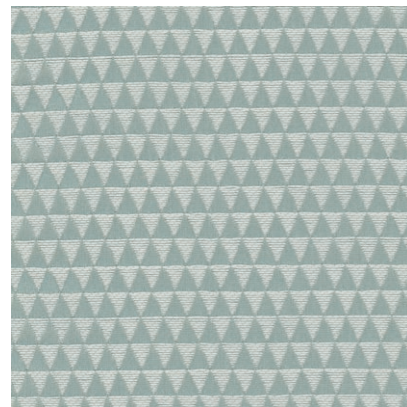
2049 - 31



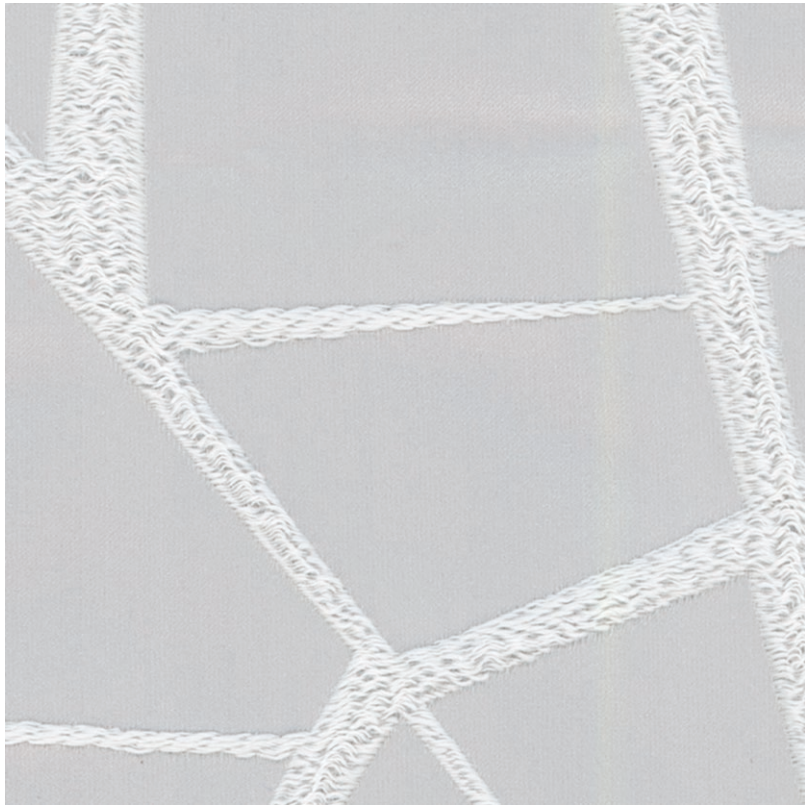
2049 - 37



2049 - 48



2049 - 54



2049 - 03

SUITABLE FOR: Drapery & Soft Upholstery  

COMPOSITION: 77% Poly, 22% Cotton, 1% Lycra

WIDTH: 140 CMS (+/- 5 CMS)

WEIGHT: 244 GSM

VERTICAL DESIGN REPEAT: 85 CMS

HORIZONTAL DESIGN REPEAT: 34.5 CMS

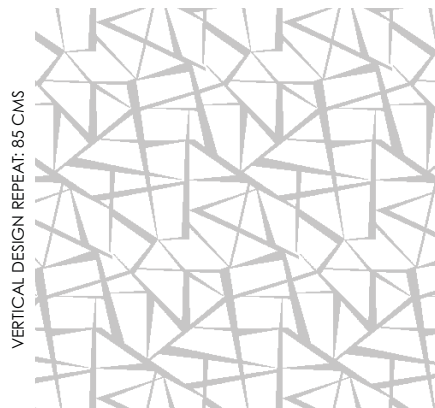
WASHING INSTRUCTIONS:     

Dry clean only.

*Colour shades may tend to vary between different dye-lots & production batches

*Due to variations in computer screens, images presented are not 100% similar to actual fabrics

AVAILABLE COLOURS



VERTICAL DESIGN REPEAT: 85 CMS

HORIZONTAL DESIGN REPEAT: 34.5 CMS

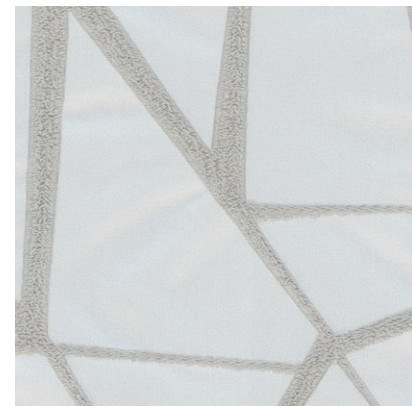
DESIGN



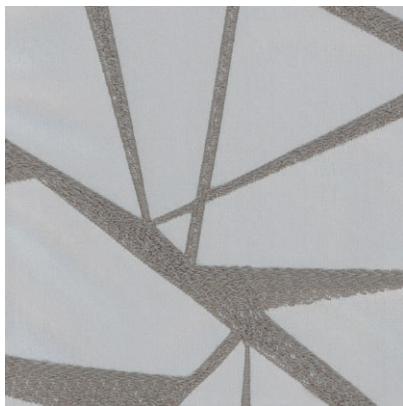
2049 - 20



2049 - 33



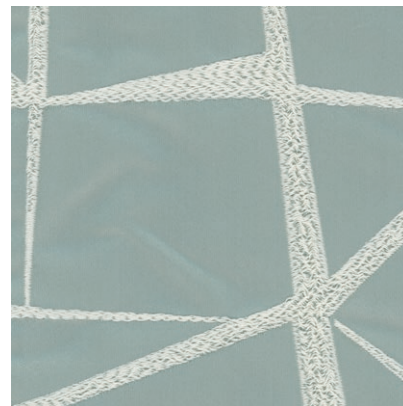
2049 - 39



2049 - 40



2049 - 42



2049 - 56



2049 - 04

SUITABLE FOR: Drapery & Soft Upholstery  

COMPOSITION: 63% Poly, 30% Viscose, 7% Metallic

WIDTH: 140 CMS (+/- 5 CMS)

WEIGHT: 226 GSM

VERTICAL DESIGN REPEAT: Nil

HORIZONTAL DESIGN REPEAT: Nil

WASHING INSTRUCTIONS:     

Machine wash at 40°C. Tumble dry low. Do not iron.

Non chlorine bleach. Dry clean.

*Colour shades may tend to vary between different dye-lots & production batches

*Due to variations in computer screens, images presented are not 100% similar to actual fabrics

NO ADDITIONAL COLOURS



2049 - 05

SUITABLE FOR: Drapery & Soft Upholstery  

COMPOSITION: Polyester Rayon Natural Fiber

WIDTH: 140 CMS (+/- 5 CMS)

WEIGHT: 230 GSM

VERTICAL DESIGN REPEAT: 18.8 CMS

HORIZONTAL DESIGN REPEAT: 23.1 CMS

WASHING INSTRUCTIONS:    

Machine wash at 40°C. Tumble dry low. Iron at low temperature.
Non chlorine bleach. Dry clean.

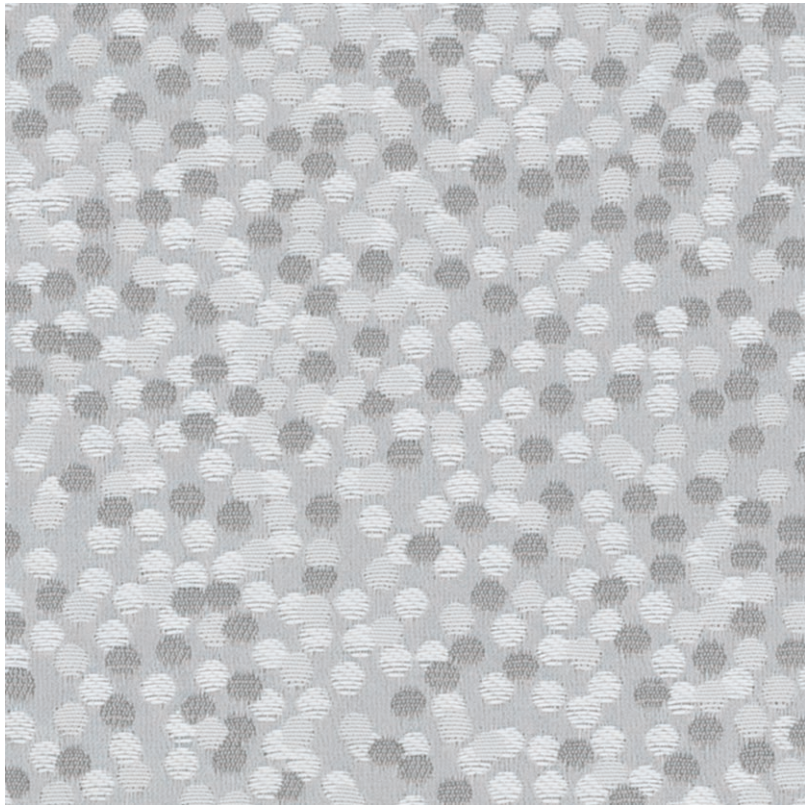
*Colour shades may tend to vary between different dye-lots & production batches

*Due to variations in computer screens, images presented are not 100% similar to actual fabrics

AVAILABLE COLOURS



2049 - 32



2049 - 06

SUITABLE FOR: Drapery & Soft Upholstery  

COMPOSITION: 74% Poly, 26% Cotton

WIDTH: 140 CMS (+/- 5 CMS)

WEIGHT: 232 GSM

VERTICAL DESIGN REPEAT: Nil

HORIZONTAL DESIGN REPEAT: Nil

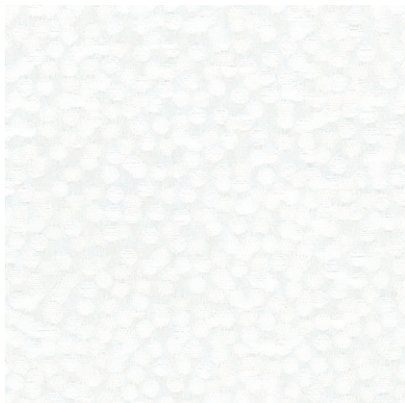
WASHING INSTRUCTIONS:     

Machine wash at 40°C. Tumble dry low. Iron at low temperature.
Non chlorine bleach. Dry clean.

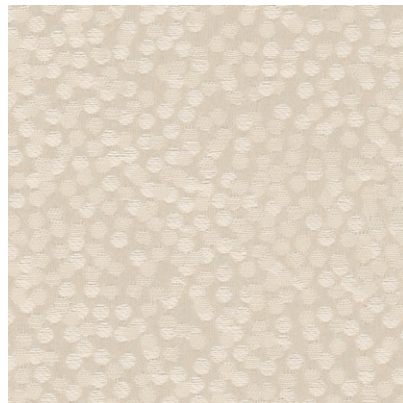
*Colour shades may tend to vary between different dye-lots & production batches

*Due to variations in computer screens, images presented are not 100% similar to actual fabrics

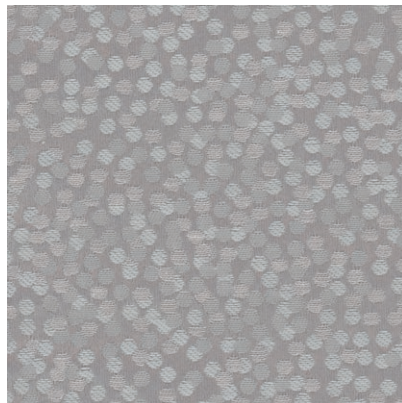
AVAILABLE COLOURS



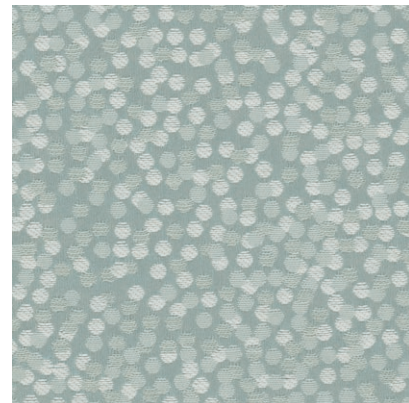
2049 - 18



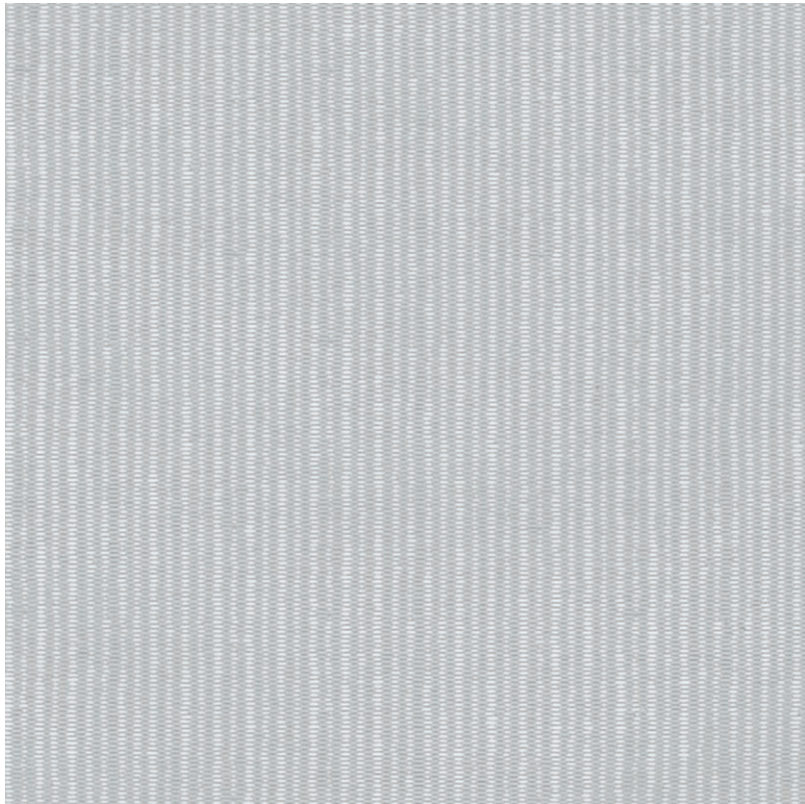
2049 - 25



2049 - 41



2049 - 55



2049 - 07

SUITABLE FOR: Drapery & Soft Upholstery  

COMPOSITION: Polyester Rayon Natural Fiber

WIDTH: 140 CMS (+/- 5 CMS)

WEIGHT: 233 GSM

VERTICAL DESIGN REPEAT: Nil

HORIZONTAL DESIGN REPEAT: Nil

WASHING INSTRUCTIONS:     

Machine wash at 40°C. Tumble dry low. Do not iron.

Non chlorine bleach. Dry clean.

*Colour shades may tend to vary between different dye-lots & production batches

*Due to variations in computer screens, images presented are not 100% similar to actual fabrics

NO ADDITIONAL COLOURS





2049 - 08

SUITABLE FOR: Drapery & Soft Upholstery  

COMPOSITION: 77% Poly, 22% Cotton, 1% Lycra

WIDTH: 140 CMS (+/- 5 CMS)

WEIGHT: 244 GSM

VERTICAL DESIGN REPEAT: 40.5 CMS

HORIZONTAL DESIGN REPEAT: 35.4 CMS

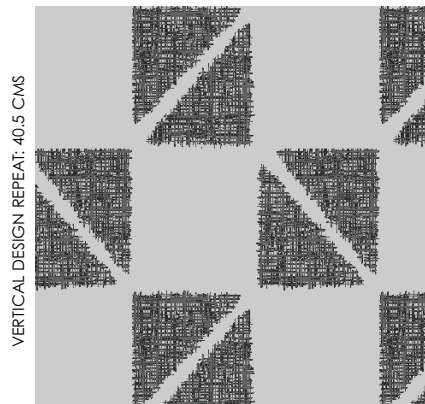
WASHING INSTRUCTIONS:     

Dry clean only.

*Colour shades may tend to vary between different dye-lots & production batches

*Due to variations in computer screens, images presented are not 100% similar to actual fabrics

NO ADDITIONAL COLOURS



HORIZONTAL DESIGN REPEAT: 35.4 CMS

DESIGN



2049 - 09

SUITABLE FOR: Drapery & Soft Upholstery  

COMPOSITION: Polyester Rayon Natural Fiber

WIDTH: 140 CMS (+/- 5 CMS)

WEIGHT: 215 GSM

VERTICAL DESIGN REPEAT: 51 CMS

HORIZONTAL DESIGN REPEAT: 35.4 CMS

WASHING INSTRUCTIONS:     

Machine wash at 40°C. Tumble dry low. Do not iron.

Non chlorine bleach. Dry clean.

*Colour shades may tend to vary between different dye-lots & production batches

*Due to variations in computer screens, images presented are not 100% similar to actual fabrics

AVAILABLE COLOURS



VERTICAL DESIGN REPEAT: 51 CMS

HORIZONTAL DESIGN REPEAT: 35.4 CMS

DESIGN



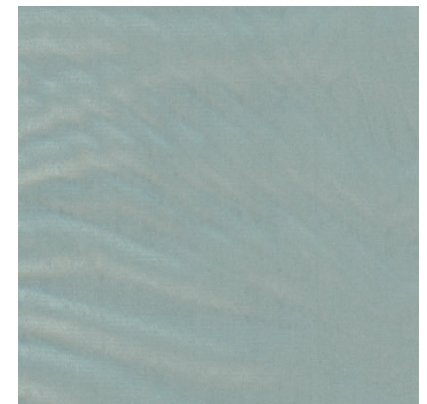
2049 - 30



2049 - 44



2049 - 46



2049 - 58



2049 - 10

SUITABLE FOR: Drapery & Soft Upholstery  

COMPOSITION: Polyester Rayon Natural Fiber

WIDTH: 140 CMS (+/- 5 CMS)

WEIGHT: 189 GSM

VERTICAL DESIGN REPEAT: Nil

HORIZONTAL DESIGN REPEAT: Nil

WASHING INSTRUCTIONS:     

Machine wash at 40°C. Tumble dry low. Iron at low temperature.
Non chlorine bleach. Dry clean.

*Colour shades may tend to vary between different dye-lots & production batches

*Due to variations in computer screens, images presented are not 100% similar to actual fabrics

AVAILABLE COLOURS



2049 - 16



2049 - 29



2049 - 45



2049 - 11

SUITABLE FOR: Drapery & Soft Upholstery  

COMPOSITION: Polyester Rayon Natural Fiber

WIDTH: 140 CMS (+/- 5 CMS)

WEIGHT: 258 GSM

VERTICAL DESIGN REPEAT: Nil

HORIZONTAL DESIGN REPEAT: Nil

WASHING INSTRUCTIONS:     

Machine wash at 40°C. Tumble dry low. Do not iron.

Non chlorine bleach. Dry clean.

*Colour shades may tend to vary between different dye-lots & production batches

*Due to variations in computer screens, images presented are not 100% similar to actual fabrics

NO ADDITIONAL COLOURS



2049 - 12

SUITABLE FOR: Drapery & Soft Upholstery  

COMPOSITION: Polyester Rayon Natural Fiber

WIDTH: 140 CMS (+/- 5 CMS)

WEIGHT: 257 GSM

VERTICAL DESIGN REPEAT: 34.9 CMS

HORIZONTAL DESIGN REPEAT: 35 CMS

WASHING INSTRUCTIONS:     

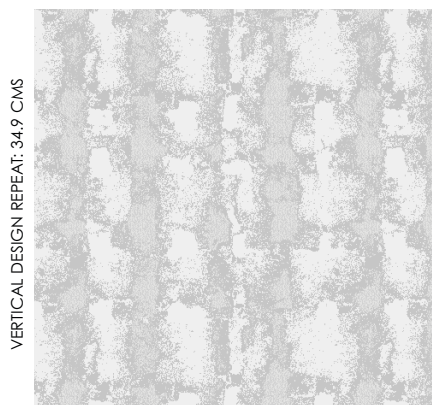
Machine wash at 40°C. Tumble dry low. Do not iron.

Non chlorine bleach. Dry clean.

*Colour shades may tend to vary between different dye-lots & production batches

*Due to variations in computer screens, images presented are not 100% similar to actual fabrics

AVAILABLE COLOURS



HORIZONTAL DESIGN REPEAT: 35 CMS

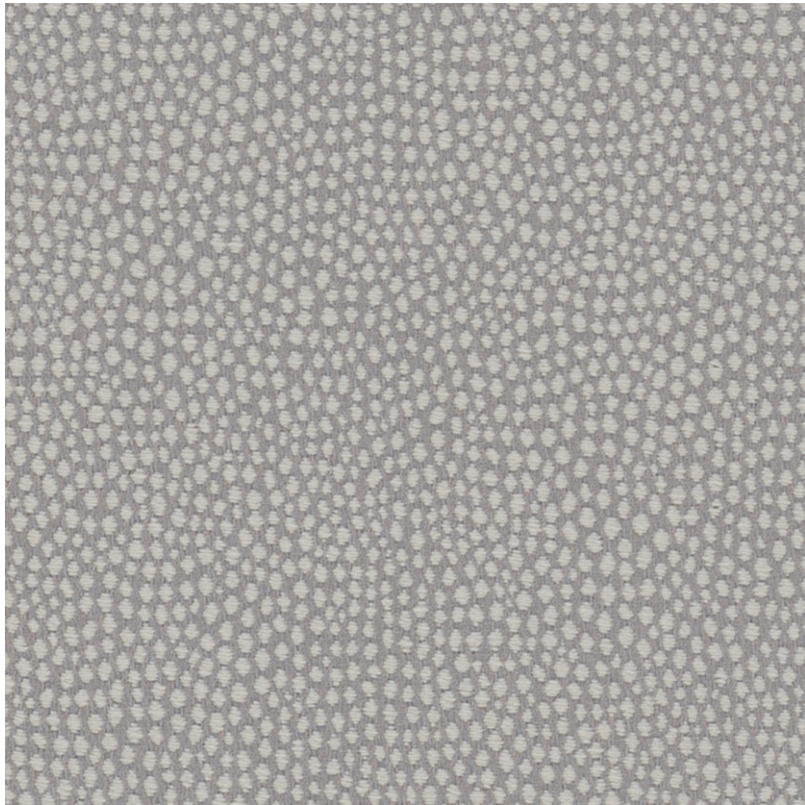
DESIGN



2049 - 35



2049 - 38



2049 - 13

SUITABLE FOR: Drapery & Soft Upholstery  

COMPOSITION: Polyester Rayon Natural Fiber

WIDTH: 140 CMS (+/- 5 CMS)

WEIGHT: 213 GSM

VERTICAL DESIGN REPEAT: Nil

HORIZONTAL DESIGN REPEAT: Nil

WASHING INSTRUCTIONS:     

Machine wash at 40°C. Tumble dry low. Iron at low temperature.
Non chlorine bleach. Dry clean.

*Colour shades may tend to vary between different dye-lots & production batches

*Due to variations in computer screens, images presented are not 100% similar to actual fabrics

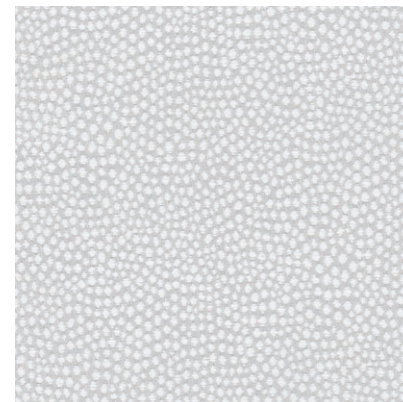
AVAILABLE COLOURS



2049 - 19



2049 - 24



2049 - 36



SUITABLE FOR: Drapery & Soft Upholstery  

COMPOSITION: Polyester Rayon Natural Fiber

WIDTH: 140 CMS (+/- 5 CMS)

WEIGHT: 224 GSM

VERTICAL DESIGN REPEAT: Nil

HORIZONTAL DESIGN REPEAT: 23.5 CMS

WASHING INSTRUCTIONS:      

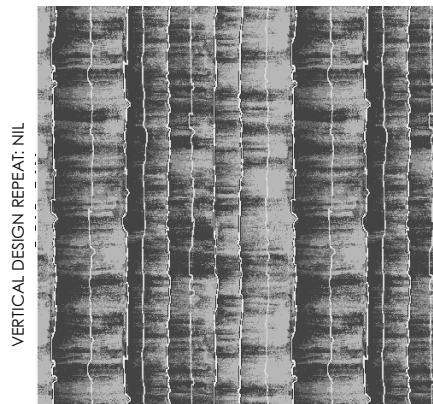
Dry clean only.

*Colour shades may tend to vary between different dye-lots & production batches

*Due to variations in computer screens, images presented are not 100% similar to actual fabrics

2049 - 14

AVAILABLE COLOURS



VERTICAL DESIGN REPEAT: NIL

HORIZONTAL DESIGN REPEAT: 23.5 CMS

DESIGN



2049 - 43

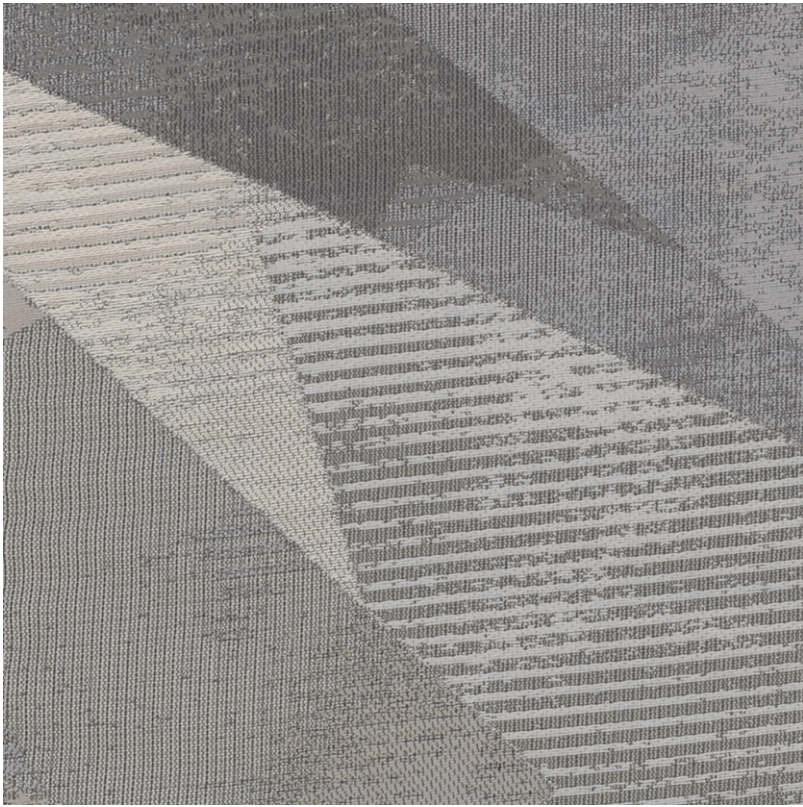


2049 - 47



2049 - 52





2049 - 15

SUITABLE FOR: Drapery & Soft Upholstery  

COMPOSITION: 68% Poly, 32% Viscose

WIDTH: 140 CMS (+/- 5 CMS)

WEIGHT: 252 GSM

VERTICAL DESIGN REPEAT: 68.2 CMS

HORIZONTAL DESIGN REPEAT: 72.8 CMS

WASHING INSTRUCTIONS:     

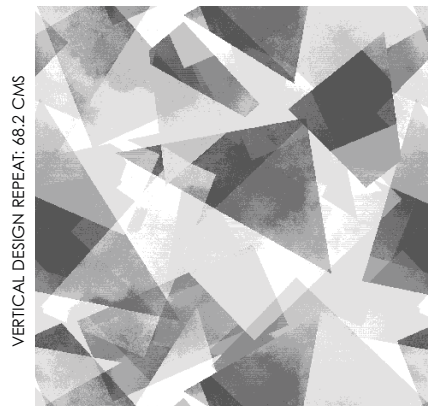
Machine wash at 40°C. Tumble dry low. Do not iron.

Non chlorine bleach. Dry clean.

*Colour shades may tend to vary between different dye-lots & production batches

*Due to variations in computer screens, images presented are not 100% similar to actual fabrics

NO ADDITIONAL COLOURS



VERTICAL DESIGN REPEAT: 68.2 CMS

HORIZONTAL DESIGN REPEAT: 72.8 CMS

DESIGN



2049 - 23

SUITABLE FOR: Drapery & Soft Upholstery  

COMPOSITION: Polyester Rayon Natural Fiber

WIDTH: 140 CMS (+/- 5 CMS)

WEIGHT: 171 GSM

VERTICAL DESIGN REPEAT: 41.4 CMS

HORIZONTAL DESIGN REPEAT: 34 CMS

WASHING INSTRUCTIONS:     

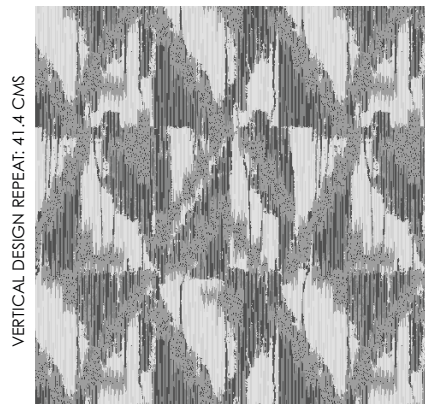
Machine wash at 40°C. Tumble dry low. Do not iron.

Non chlorine bleach. Dry clean.

*Colour shades may tend to vary between different dye-lots & production batches

*Due to variations in computer screens, images presented are not 100% similar to actual fabrics

NO ADDITIONAL COLOURS



VERTICAL DESIGN REPEAT: 41.4 CMS
HORIZONTAL DESIGN REPEAT: 34 CMS

DESIGN



2049 - 26

SUITABLE FOR: Drapery & Soft Upholstery  

COMPOSITION: 52% Poly, 48% Cotton

WIDTH: 140 CMS (+/- 5 CMS)

WEIGHT: 219 GSM

VERTICAL DESIGN REPEAT: 36.4 CMS

HORIZONTAL DESIGN REPEAT: 35 CMS

WASHING INSTRUCTIONS:     

Machine wash at 40°C. Tumble dry low. Do not iron.

Non chlorine bleach. Dry clean.

*Colour shades may tend to vary between different dye-lots & production batches

*Due to variations in computer screens, images presented are not 100% similar to actual fabrics

NO ADDITIONAL COLOURS



VERTICAL DESIGN REPEAT: 36.4 CMS

HORIZONTAL DESIGN REPEAT: 35 CMS

DESIGN



2049 - 27

SUITABLE FOR: Drapery & Soft Upholstery  

COMPOSITION: 52% Poly, 48% Cotton

WIDTH: 140 CMS (+/- 5 CMS)

WEIGHT: 219 GSM

VERTICAL DESIGN REPEAT: 28.5 CMS

HORIZONTAL DESIGN REPEAT: 17.7 CMS

WASHING INSTRUCTIONS:     

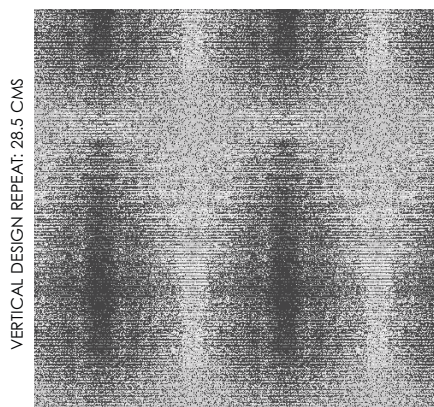
Machine wash at 40°C. Tumble dry low. Do not iron.

Non chlorine bleach. Dry clean.

*Colour shades may tend to vary between different dye-lots & production batches

*Due to variations in computer screens, images presented are not 100% similar to actual fabrics

AVAILABLE COLOURS



VERTICAL DESIGN REPEAT: 28.5 CMS

HORIZONTAL DESIGN REPEAT: 17.7 CMS

DESIGN



2049 - 34



2049 - 51



2049 - 28

SUITABLE FOR: Drapery & Soft Upholstery  

COMPOSITION: 95% Poly, 5% Metallic

WIDTH: 140 CMS (+/- 5 CMS)

WEIGHT: 172 GSM

VERTICAL DESIGN REPEAT: Nil

HORIZONTAL DESIGN REPEAT: Nil

WASHING INSTRUCTIONS:     

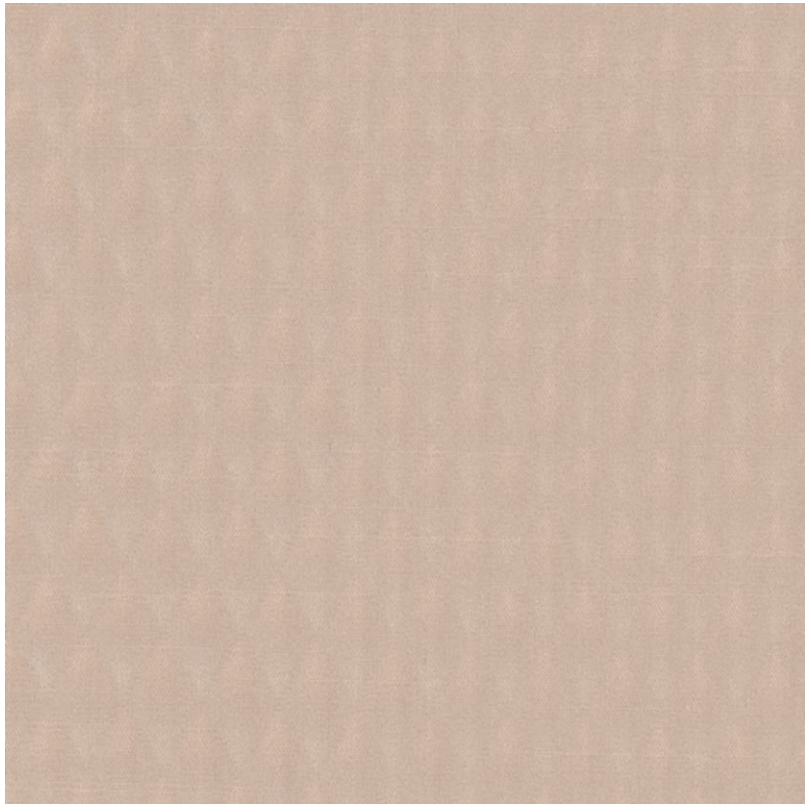
Machine wash at 40°C. Tumble dry low. Do not iron.

Do not bleach. Dry clean.

*Colour shades may tend to vary between different dye-lots & production batches

*Due to variations in computer screens, images presented are not 100% similar to actual fabrics

NO ADDITIONAL COLOURS



2049 - 49

SUITABLE FOR: Drapery & Soft Upholstery  

COMPOSITION: 78% Poly, 22% Cotton

WIDTH: 140 CMS (+/- 5 CMS)

WEIGHT: 249 GSM

VERTICAL DESIGN REPEAT: Nil

HORIZONTAL DESIGN REPEAT: Nil

WASHING INSTRUCTIONS:     

Machine wash at 30°C. Tumble dry low. Do not iron.

Non chlorine bleach. Dry clean.

*Colour shades may tend to vary between different dye-lots & production batches

*Due to variations in computer screens, images presented are not 100% similar to actual fabrics

NO ADDITIONAL COLOURS



2049 - 50

SUITABLE FOR: Drapery & Soft Upholstery  

COMPOSITION: 74% Poly, 13% Cotton, 13% Linen

WIDTH: 140 CMS (+/- 5 CMS)

WEIGHT: 192 GSM

VERTICAL DESIGN REPEAT: 74 CMS

HORIZONTAL DESIGN REPEAT: 35.9 CMS

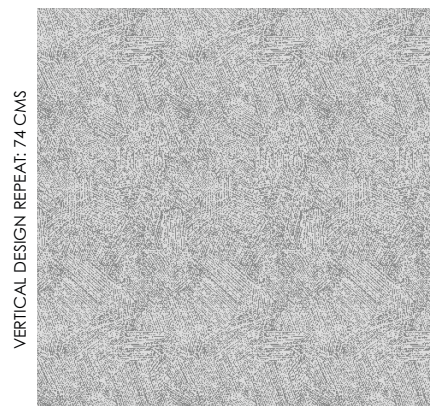
WASHING INSTRUCTIONS:      

Dry clean only.

*Colour shades may tend to vary between different dye-lots & production batches

*Due to variations in computer screens, images presented are not 100% similar to actual fabrics

AVAILABLE COLOURS



VERTICAL DESIGN REPEAT: 74 CMS

HORIZONTAL DESIGN REPEAT: 35.9 CMS

DESIGN



2049 - 53



2049 - 57

SUITABLE FOR: Drapery & Soft Upholstery  

COMPOSITION: Polyester Rayon Natural Fiber

WIDTH: 140 CMS (+/- 5 CMS)

WEIGHT: 225 GSM

VERTICAL DESIGN REPEAT: 77.4 CMS

HORIZONTAL DESIGN REPEAT: 34.6 CMS

WASHING INSTRUCTIONS:     

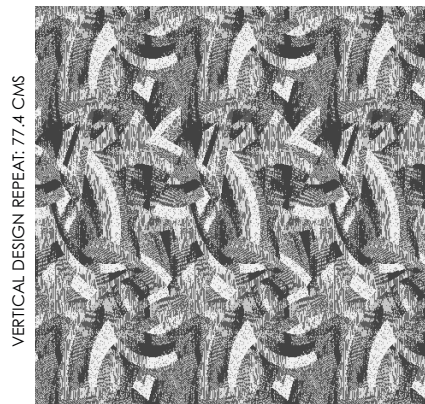
Machine wash at 40°C. Tumble dry low. Do not iron.

Non chlorine bleach. Dry clean.

*Colour shades may tend to vary between different dye-lots & production batches

*Due to variations in computer screens, images presented are not 100% similar to actual fabrics

NO ADDITIONAL COLOURS



VERTICAL DESIGN REPEAT: 77.4 CMS

HORIZONTAL DESIGN REPEAT: 34.6 CMS

DESIGN





ULTRA FABRICS

EST. 1990

ULTRA FURNISHING FABRICS FZCO

Unit 262. Dubai Textile City
Al Warsan 1, Dubai, UAE

Follow our socials
ultrafabrics.ae



www.ultrafabrics.ae