



# AEGIS

CAT NO. 1371

**AEGIS** redefines sophistication by seamlessly blending style and functionality in a refined palette of whites, beiges, and greys. Choose from a variety of textures, including semi-bouclés, chenilles, and jacquard patterns infused with fancy yarns. Its easy-clean feature empowers you to embrace both beauty and durability in your living space. An add on flame retardant finish is available for commercial settings.

 **FabGuard**  
Easy-Clean Protection









All easy clean fabrics are resistant against common household stains. Be it wine, coffee, tea, or ink - there is no liquid that can't effortlessly be wiped off.

### Steps to clean stains



Step 1: Dab dry the excess residue with paper towel. Refrain from spreading it.



Step 2: Spray water directly onto the stain and blot (do not rub) using white paper towels. Repeat until the paper towel no longer absorbs any stain.



Step 3: Finish by spraying water and gently rubbing the stain with a microfiber cloth in a circular motion. Continue until the stain disappears. For tougher stains, use transparent liquid detergent on the stain and repeat until the stain vanishes. Be sure to use water again to remove all traces of the detergent.



Step 4: Let the fabric air dry. Do not apply heat or use a hair dryer. That's it, you're done!

\*Immediate removal of a stain will lead to the best effect.

\*Do not use artificial heat, bleach, vinegar, or any other harsh chemicals.

\*Stains may be effectively cleaned to an extent ranging from 90% to 98%.

\*Depending on the time exposed, the type of stains and the weave of the respective fabric.



STAIN RESISTANT



HIGHLY DURABLE



EASY TO CLEAN



CHILD FRIENDLY



PET FRIENDLY

# Easy Clean Fabrics Testing Report

CAT. NO.	SR. NO.	WATER-BASED STAINS			OIL-BASED STAINS	
		COFFEE	GRAPE JUICE	SOYA SAUCE	KETCHUP	PEN
1371	1, 16, 41, 62, 85	98%	98%	95%	90%	90%
1371	2, 6, 18, 59, 78	98%	98%	95%	90%	90%
1371	3, 25, 35, 61, 88	98%	98%	95%	90%	90%
1371	4, 26, 42, 63, 72, 96, 98	98%	98%	95%	90%	90%
1371	5, 23, 70, 93	98%	98%	95%	90%	90%
1371	7, 24, 47, 48, 73, 91	98%	98%	95%	90%	90%
1371	8, 15, 33, 37, 55, 80	98%	98%	95%	90%	90%
1371	9, 14, 34, 40, 79	98%	98%	95%	90%	90%
1371	10, 12, 51, 83, 89	98%	98%	95%	90%	90%
1371	11, 22, 27, 39, 67, 97	98%	98%	95%	90%	90%
1371	13, 31, 36, 77, 94, 100, 102	98%	98%	95%	90%	90%
1371	17, 29, 46, 75	98%	98%	95%	90%	90%
1371	19, 32, 50, 52, 76	98%	98%	95%	90%	90%
1371	20, 28, 43, 57, 84	98%	98%	95%	90%	90%
1371	21, 30, 38, 65, 74	98%	98%	95%	90%	90%
1371	44, 64, 82, 92, 99	98%	98%	95%	90%	90%
1371	45, 53, 95	98%	98%	95%	90%	90%
1371	49, 56, 71, 101	98%	98%	95%	90%	90%
1371	54, 60, 87	98%	98%	95%	90%	90%
1371	58, 66, 68	98%	98%	95%	90%	90%
1371	69, 81, 86, 90	98%	98%	95%	90%	90%



Note: Stains may be effectively cleaned to an extent ranging from 90% to 98%.  
Depending on the time exposed, the type of stain and the weave of the respective fabric.





1371 - 01

**SUITABLE FOR:** Upholstery 

**COMPOSITION:** Polyester Rayon Natural Fiber

**WIDTH:** 140 CMS (+/- 5 CMS)

**WEIGHT:** 540 GSM

**VERTICAL DESIGN REPEAT:** Nil

**HORIZONTAL DESIGN REPEAT:** Nil

**MARTINDALE:** 85,000 Rubs

**WASHING INSTRUCTIONS:**     

Machine wash at 30°C. Gentle cycle. Tumble dry low.

Iron at low temperature. Do not bleach. Dry clean.

\*Colour shades may tend to vary between different dye-lots & production batches

\*Due to variations in computer screens, images presented are not 100% similar to actual fabrics.

**NFPA 701 (FR) - AVAILABLE ON REQUEST.**

---

AVAILABLE COLOURS

---



1371 - 16



1371 - 41



1371 - 62



1371 - 85





1371 - 02

**SUITABLE FOR:** Upholstery 

**COMPOSITION:** 60% Poly, 40% Cotton

**WIDTH:** 140 CMS (+/- 5 CMS)

**WEIGHT:** 430 GSM

**VERTICAL DESIGN REPEAT:** Nil

**HORIZONTAL DESIGN REPEAT:** Nil

**MARTINDALE:** 80,000 Rubs

**WASHING INSTRUCTIONS:**     

Machine wash at 30°C. Gentle cycle. Tumble dry low.

Iron at low temperature. Do not bleach. Dry clean.

\*Colour shades may tend to vary between different dye-lots & production batches

\*Due to variations in computer screens, images presented are not 100% similar to actual fabrics.

**NFPA 701 (FR) - NOT AVAILABLE FOR THIS ARTICLE.**

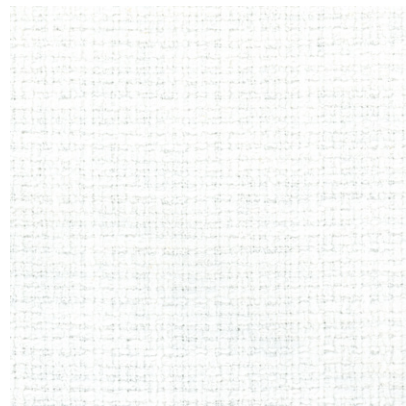
---

AVAILABLE COLOURS

---



1371 - 06



1371 - 18

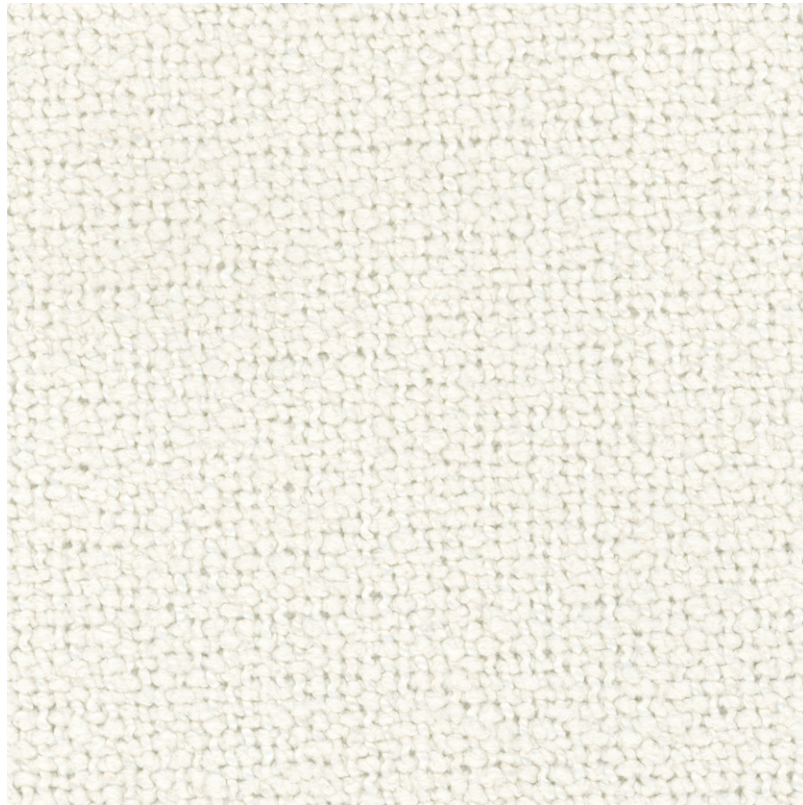


1371 - 59



1371 - 78





1371 - 03

**SUITABLE FOR:** Upholstery 

**COMPOSITION:** Polyester Rayon Natural Fiber

**WIDTH:** 140 CMS (+/- 5 CMS)

**WEIGHT:** 555 GSM

**VERTICAL DESIGN REPEAT:** Nil

**HORIZONTAL DESIGN REPEAT:** Nil

**MARTINDALE:** 100,000 Rubs

**WASHING INSTRUCTIONS:** 

Machine wash at 30°C. Gentle cycle. Tumble dry low.

Iron at low temperature. Do not bleach. Dry clean.

\*Colour shades may tend to vary between different dye-lots & production batches

\*Due to variations in computer screens, images presented are not 100% similar to actual fabrics.

**NFPA 701 (FR) - AVAILABLE ON REQUEST.**

---

AVAILABLE COLOURS

---



1371 - 25



1371 - 35



1371 - 61



1371 - 88





1371 - 04

**SUITABLE FOR:** Upholstery 

**COMPOSITION:** Polyester Rayon Natural Fiber

**WIDTH:** 140 CMS (+/- 5 CMS)

**WEIGHT:** 570 GSM

**VERTICAL DESIGN REPEAT:** Nil

**HORIZONTAL DESIGN REPEAT:** Nil

**MARTINDALE:** 65,000 Rubs

**WASHING INSTRUCTIONS:**     

Machine wash at 30°C. Gentle cycle. Tumble dry low.

Iron at low temperature. Do not bleach. Dry clean.

\*Colour shades may tend to vary between different dye-lots & production batches

\*Due to variations in computer screens, images presented are not 100% similar to actual fabrics.

**NFPA 701 (FR) - AVAILABLE ON REQUEST.**

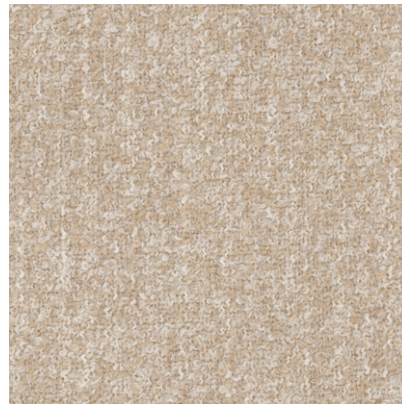
---

AVAILABLE COLOURS

---



1371 - 26

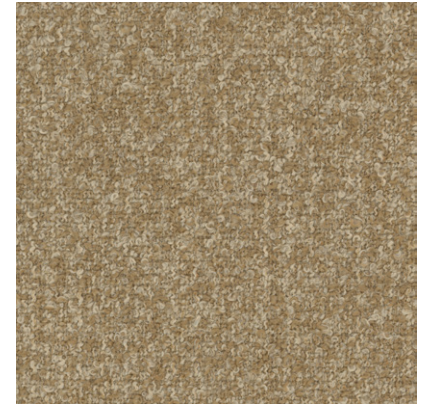


1371 - 42



1371 - 63

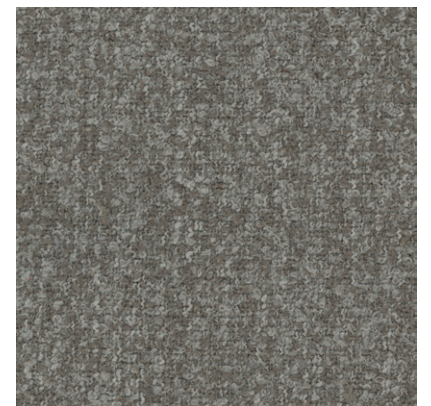




1371 - 72

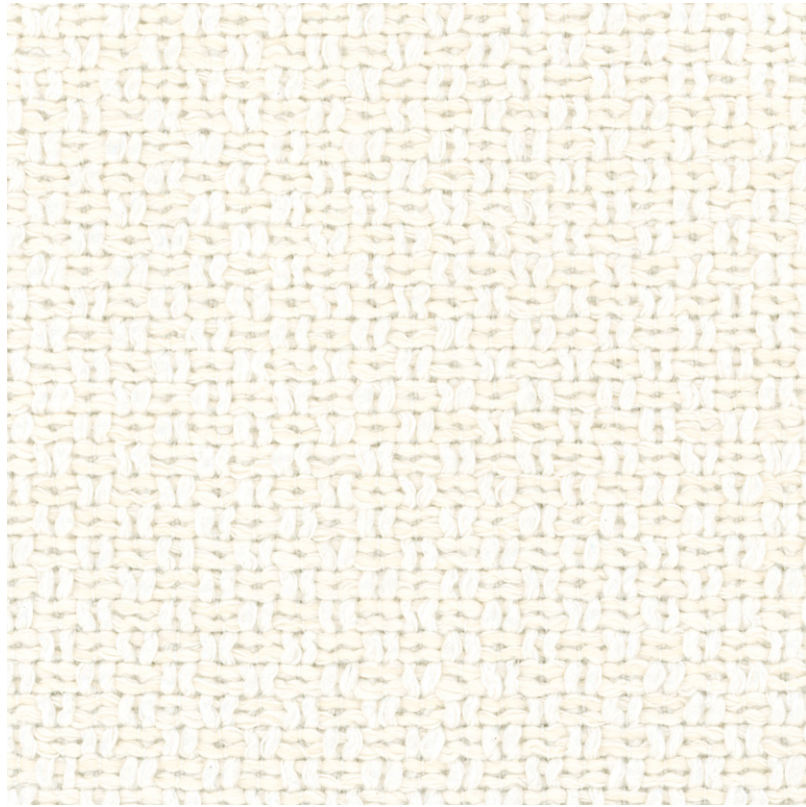


1371 - 96



1371 - 98





1371 - 05

**SUITABLE FOR:** Upholstery 

**COMPOSITION:** Polyester Rayon Natural Fiber

**WIDTH:** 140 CMS (+/- 5 CMS)

**WEIGHT:** 570 GSM

**VERTICAL DESIGN REPEAT:** Nil

**HORIZONTAL DESIGN REPEAT:** Nil

**MARTINDALE:** 90,000 Rubs

**WASHING INSTRUCTIONS:**     

Machine wash at 30°C. Gentle cycle. Tumble dry low.

Iron at low temperature. Do not bleach. Dry clean.

\*Colour shades may tend to vary between different dye-lots & production batches

\*Due to variations in computer screens, images presented are not 100% similar to actual fabrics.

**NFPA 701 (FR) - AVAILABLE ON REQUEST.**

---

AVAILABLE COLOURS

---



1371 - 23

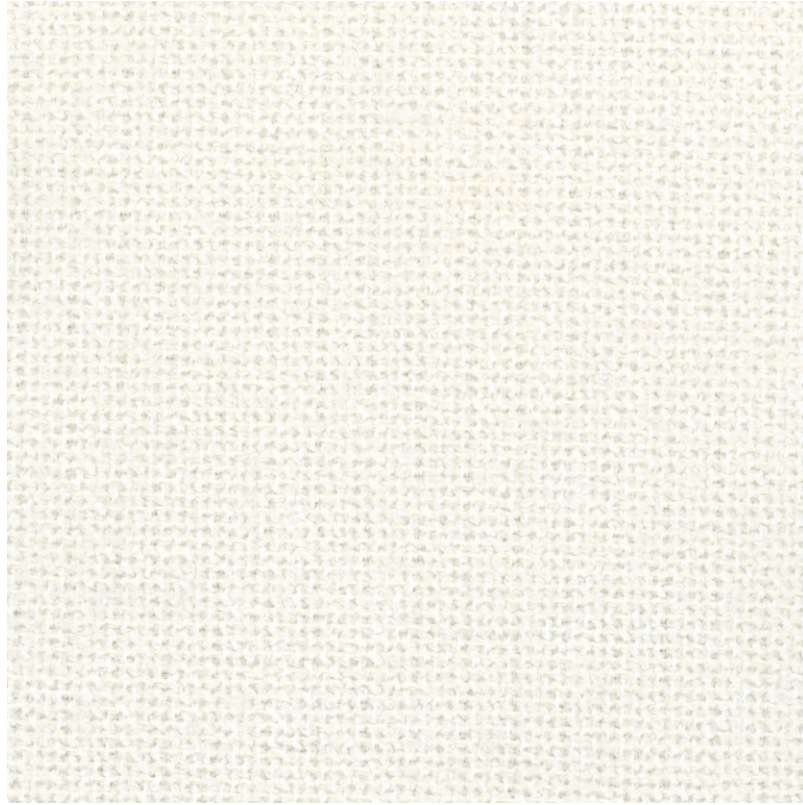


1371 - 70



1371 - 93





1371 - 07

**SUITABLE FOR:** Upholstery 

**COMPOSITION:** Polyester Rayon Natural Fiber

**WIDTH:** 140 CMS (+/- 5 CMS)

**WEIGHT:** 410 GSM

**VERTICAL DESIGN REPEAT:** Nil

**HORIZONTAL DESIGN REPEAT:** Nil

**MARTINDALE:** 55,000 Rubs

**WASHING INSTRUCTIONS:**     

Machine wash at 30°C. Gentle cycle. Tumble dry low.

Iron at low temperature. Do not bleach. Dry clean.

\*Colour shades may tend to vary between different dye-lots & production batches

\*Due to variations in computer screens, images presented are not 100% similar to actual fabrics.

**NFPA 701 (FR) - AVAILABLE ON REQUEST.**

---

AVAILABLE COLOURS

---



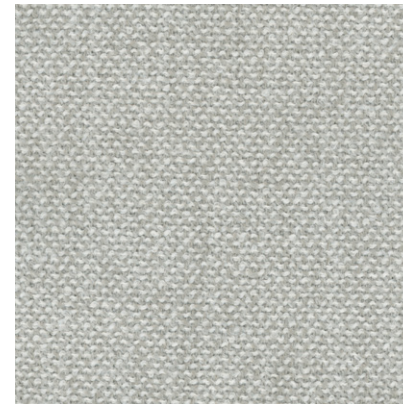
1371 - 24



1371 - 47



1371 - 48



1371 - 73



1371 - 91





1371 - 08

**SUITABLE FOR:** Upholstery 

**COMPOSITION:** Polyester Rayon Natural Fiber

**WIDTH:** 140 CMS (+/- 5 CMS)

**WEIGHT:** 530 GSM

**VERTICAL DESIGN REPEAT:** Nil

**HORIZONTAL DESIGN REPEAT:** Nil

**MARTINDALE:** 95,000 Rubs

**WASHING INSTRUCTIONS:**     

Machine wash at 30°C. Gentle cycle. Tumble dry low.

Iron at low temperature. Do not bleach. Dry clean.

\*Colour shades may tend to vary between different dye-lots & production batches

\*Due to variations in computer screens, images presented are not 100% similar to actual fabrics.

**NFPA 701 (FR) - AVAILABLE ON REQUEST.**

AVAILABLE COLOURS



1371 - 15



1371 - 33



1371 - 37

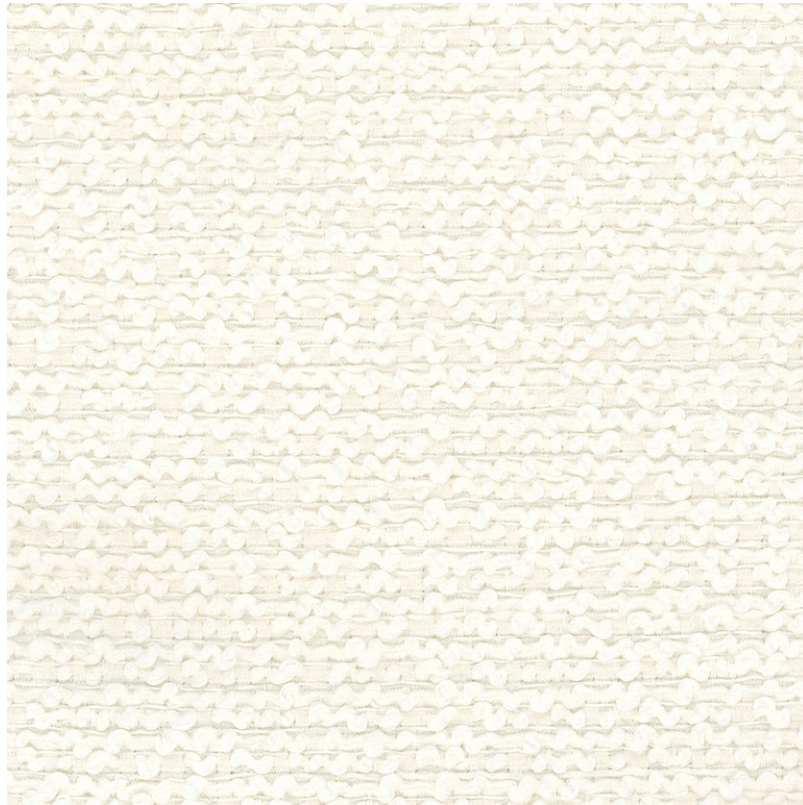


1371 - 55



1371 - 80





1371 - 09

**SUITABLE FOR:** Upholstery 

**COMPOSITION:** Polyester Rayon Natural Fiber

**WIDTH:** 140 CMS (+/- 5 CMS)

**WEIGHT:** 490 GSM

**VERTICAL DESIGN REPEAT:** Nil

**HORIZONTAL DESIGN REPEAT:** Nil

**MARTINDALE:** 90,000 Rubs

**WASHING INSTRUCTIONS:**     

Machine wash at 30°C. Gentle cycle. Tumble dry low.

Iron at low temperature. Do not bleach. Dry clean.

\*Colour shades may tend to vary between different dye-lots & production batches

\*Due to variations in computer screens, images presented are not 100% similar to actual fabrics.

**NFPA 701 (FR) - AVAILABLE ON REQUEST.**

---

AVAILABLE COLOURS

---



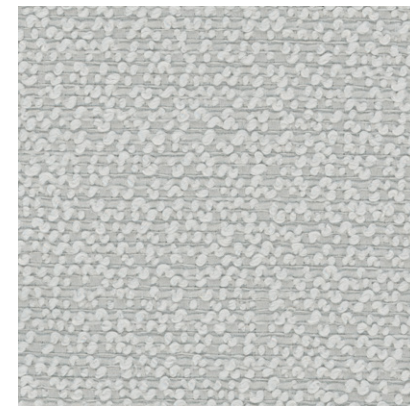
1371 - 14



1371 - 34



1371 - 40



1371 - 79





1371 - 10

**SUITABLE FOR:** Upholstery 

**COMPOSITION:** Polyester Rayon Natural Fiber

**WIDTH:** 140 CMS (+/- 5 CMS)

**WEIGHT:** 545 GSM

**VERTICAL DESIGN REPEAT:** Nil

**HORIZONTAL DESIGN REPEAT:** Nil

**MARTINDALE:** 75,000 Rubs

**WASHING INSTRUCTIONS:** 

Machine wash at 30°C. Gentle cycle. Tumble dry low.

Iron at low temperature. Do not bleach. Dry clean.

\*Colour shades may tend to vary between different dye-lots & production batches

\*Due to variations in computer screens, images presented are not 100% similar to actual fabrics.

**NFPA 701 (FR) - AVAILABLE ON REQUEST.**

---

AVAILABLE COLOURS

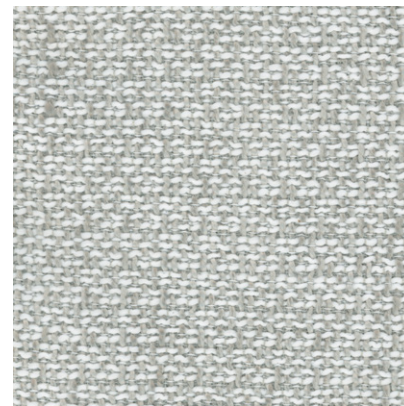
---



1371 - 12



1371 - 51



1371 - 83



1371 - 89





**SUITABLE FOR:** Upholstery 

**COMPOSITION:** 96% Poly, 4% Cotton

**WIDTH:** 140 CMS (+/- 5 CMS)

**WEIGHT:** 390 GSM

**VERTICAL DESIGN REPEAT:** Nil

**HORIZONTAL DESIGN REPEAT:** Nil

**MARTINDALE:** 70,000 Rubs

**WASHING INSTRUCTIONS:** 

Machine wash at 30°C. Gentle cycle. Tumble dry low.

Iron at low temperature. Do not bleach. Dry clean.

\*Colour shades may tend to vary between different dye-lots & production batches

\*Due to variations in computer screens, images presented are not 100% similar to actual fabrics.

**NFPA 701 (FR) - NOT AVAILABLE FOR THIS ARTICLE.**

1371 - 11

AVAILABLE COLOURS



1371 - 22



1371 - 27



1371 - 39



1371 - 67



1371 - 97





1371 - 13

**SUITABLE FOR:** Upholstery 

**COMPOSITION:** Polyester Rayon Natural Fiber

**WIDTH:** 140 CMS (+/- 5 CMS)

**WEIGHT:** 540 GSM

**VERTICAL DESIGN REPEAT:** Nil

**HORIZONTAL DESIGN REPEAT:** Nil

**MARTINDALE:** 85,000 Rubs

**WASHING INSTRUCTIONS:**     

Machine wash at 30°C. Gentle cycle. Tumble dry low.

Iron at low temperature. Do not bleach. Dry clean.

\*Colour shades may tend to vary between different dye-lots & production batches

\*Due to variations in computer screens, images presented are not 100% similar to actual fabrics.

**NFPA 701 (FR) - AVAILABLE ON REQUEST.**

---

AVAILABLE COLOURS

---



1371 - 31



1371 - 36

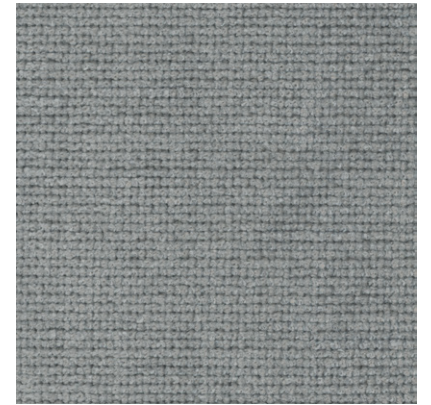


1371 - 77





1371 - 94



1371 - 100



1371 - 102





1371 - 17

**SUITABLE FOR:** Upholstery 

**COMPOSITION:** Polyester Rayon Natural Fiber

**WIDTH:** 140 CMS (+/- 5 CMS)

**WEIGHT:** 430 GSM

**VERTICAL DESIGN REPEAT:** Nil

**HORIZONTAL DESIGN REPEAT:** Nil

**MARTINDALE:** 100,000 Rubs

**WASHING INSTRUCTIONS:** 

Machine wash at 30°C. Gentle cycle. Tumble dry low.

Iron at low temperature. Do not bleach. Dry clean.

\*Colour shades may tend to vary between different dye-lots & production batches

\*Due to variations in computer screens, images presented are not 100% similar to actual fabrics.

**NFPA 701 (FR) - AVAILABLE ON REQUEST.**

---

AVAILABLE COLOURS

---



1371 - 29

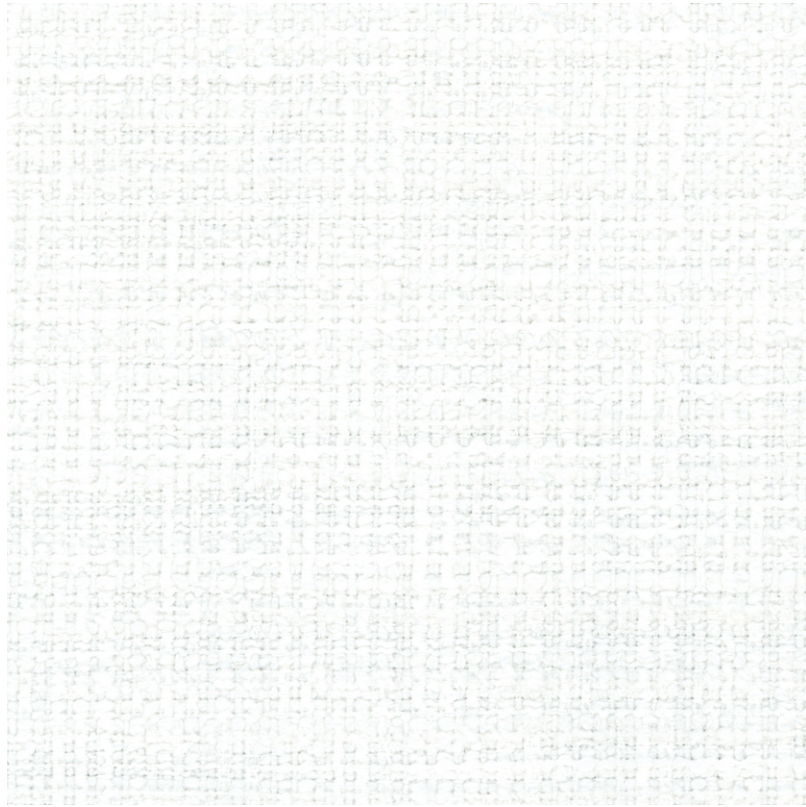


1371 - 46



1371 - 75





**SUITABLE FOR:** Upholstery 

**COMPOSITION:** Polyester Rayon Natural Fiber

**WIDTH:** 140 CMS (+/- 5 CMS)

**WEIGHT:** 510 GSM

**VERTICAL DESIGN REPEAT:** Nil

**HORIZONTAL DESIGN REPEAT:** Nil

**MARTINDALE:** 65,000 Rubs

**WASHING INSTRUCTIONS:**     

Machine wash at 30°C. Gentle cycle. Tumble dry low.

Iron at low temperature. Do not bleach. Dry clean.

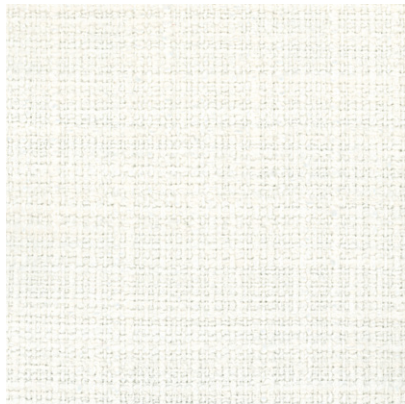
\*Colour shades may tend to vary between different dye-lots & production batches

\*Due to variations in computer screens, images presented are not 100% similar to actual fabrics.

**NFPA 701 (FR) - AVAILABLE ON REQUEST.**

1371 - 19

AVAILABLE COLOURS



1371 - 32



1371 - 50



1371 - 52



1371 - 76





1371 - 20

**SUITABLE FOR:** Upholstery 

**COMPOSITION:** Polyester Rayon Natural Fiber

**WIDTH:** 140 CMS (+/- 5 CMS)

**WEIGHT:** 550 GSM

**VERTICAL DESIGN REPEAT:** Nil

**HORIZONTAL DESIGN REPEAT:** Nil

**MARTINDALE:** 90,000 Rubs

**WASHING INSTRUCTIONS:**     

Machine wash at 30°C. Gentle cycle. Tumble dry low.

Iron at low temperature. Do not bleach. Dry clean.

\*Colour shades may tend to vary between different dye-lots & production batches

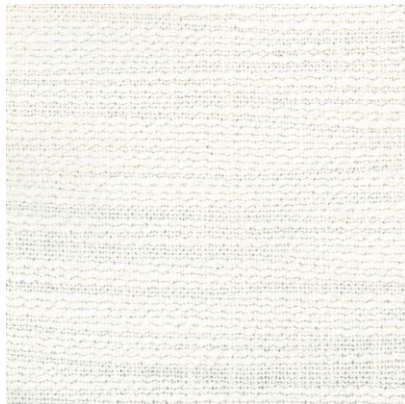
\*Due to variations in computer screens, images presented are not 100% similar to actual fabrics.

**NFPA 701 (FR) - AVAILABLE ON REQUEST.**

---

AVAILABLE COLOURS

---



1371 - 28



1371 - 43

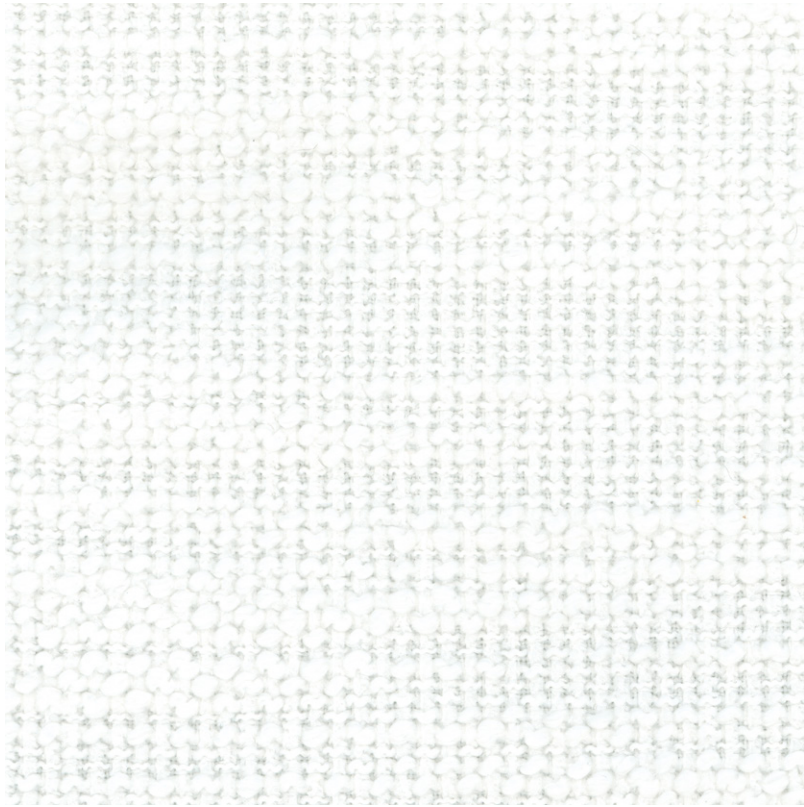


1371 - 57



1371 - 84





1371 - 21

**SUITABLE FOR:** Upholstery 

**COMPOSITION:** Polyester Rayon Natural Fiber

**WIDTH:** 140 CMS (+/- 5 CMS)

**WEIGHT:** 580 GSM

**VERTICAL DESIGN REPEAT:** Nil

**HORIZONTAL DESIGN REPEAT:** Nil

**MARTINDALE:** 90,000 Rubs

**WASHING INSTRUCTIONS:** 

Machine wash at 30°C. Gentle cycle. Tumble dry low.

Iron at low temperature. Do not bleach. Dry clean.

\*Colour shades may tend to vary between different dye-lots & production batches

\*Due to variations in computer screens, images presented are not 100% similar to actual fabrics.

**NFPA 701 (FR) - AVAILABLE ON REQUEST.**

---

AVAILABLE COLOURS

---



1371 - 30



1371 - 38

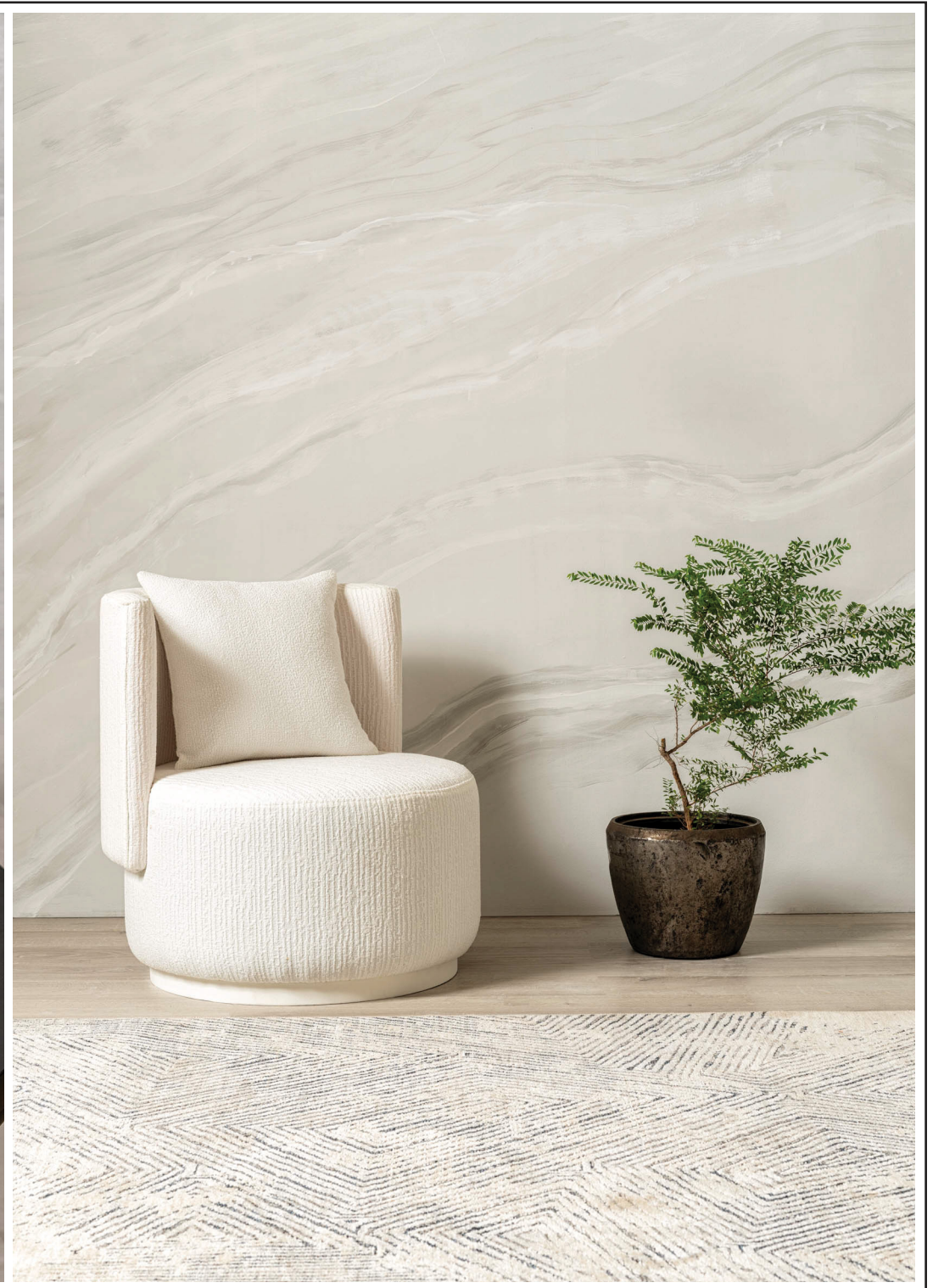


1371 - 65



1371 - 74









**SUITABLE FOR:** Upholstery 

**COMPOSITION:** Polyester Rayon Natural Fiber

**WIDTH:** 140 CMS (+/- 5 CMS)

**WEIGHT:** 430 GSM

**VERTICAL DESIGN REPEAT:** 49.5 CMS

**HORIZONTAL DESIGN REPEAT:** 35 CMS

**MARTINDALE:** 40,000 Rubs

**WASHING INSTRUCTIONS:** 

Machine wash at 30°C. Gentle cycle. Tumble dry low.

Iron at low temperature. Do not bleach. Dry clean.

\*Colour shades may tend to vary between different dye-lots & production batches

\*Due to variations in computer screens, images presented are not 100% similar to actual fabrics.

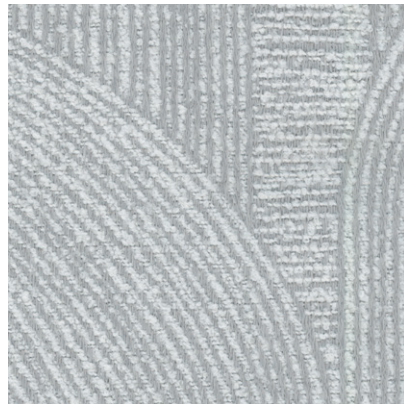
**NFPA 701 (FR) - AVAILABLE ON REQUEST.**

1371 - 44

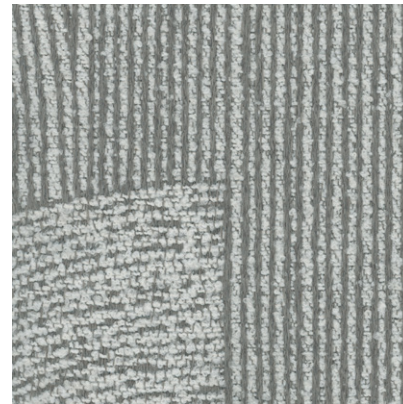
AVAILABLE COLOURS



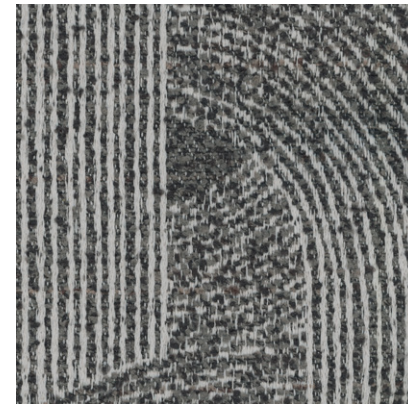
1371 - 64



1371 - 82



1371 - 92



1371 - 99





1371 - 45

**SUITABLE FOR:** Upholstery 

**COMPOSITION:** Polyester Rayon Natural Fiber

**WIDTH:** 140 CMS (+/- 5 CMS)

**WEIGHT:** 555 GSM

**VERTICAL DESIGN REPEAT:** Nil

**HORIZONTAL DESIGN REPEAT:** Nil

**MARTINDALE:** 90,000 Rubs

**WASHING INSTRUCTIONS:**     

Machine wash at 30°C. Gentle cycle. Tumble dry low.

Iron at low temperature. Do not bleach. Dry clean.

\*Colour shades may tend to vary between different dye-lots & production batches

\*Due to variations in computer screens, images presented are not 100% similar to actual fabrics.

**NFPA 701 (FR) - AVAILABLE ON REQUEST.**

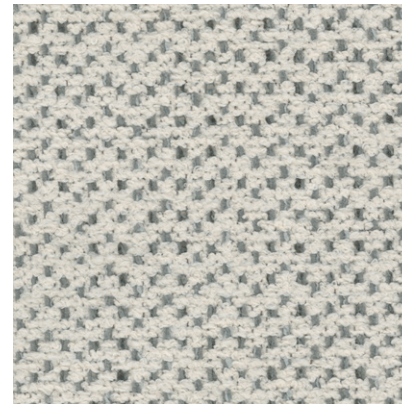
---

AVAILABLE COLOURS

---



1371 - 53



1371 - 95





1371 - 49

**SUITABLE FOR:** Upholstery 

**COMPOSITION:** Polyester Rayon Natural Fiber

**WIDTH:** 140 CMS (+/- 5 CMS)

**WEIGHT:** 560 GSM

**VERTICAL DESIGN REPEAT:** Nil

**HORIZONTAL DESIGN REPEAT:** Nil

**MARTINDALE:** 55,000 Rubs

**WASHING INSTRUCTIONS:** 

Machine wash at 30°C. Gentle cycle. Tumble dry low.

Iron at low temperature. Do not bleach. Dry clean.

\*Colour shades may tend to vary between different dye-lots & production batches

\*Due to variations in computer screens, images presented are not 100% similar to actual fabrics.

**NFPA 701 (FR) - AVAILABLE ON REQUEST.**

---

AVAILABLE COLOURS

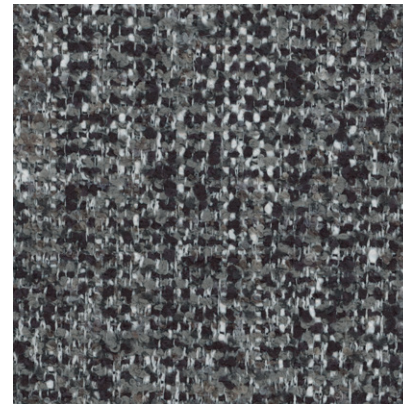
---



1371 - 56



1371 - 71



1371 - 101





**SUITABLE FOR:** Upholstery 

**COMPOSITION:** 71% Poly, 29% Cotton

**WIDTH:** 140 CMS (+/- 5 CMS)

**WEIGHT:** 500 GSM

**VERTICAL DESIGN REPEAT:** Nil

**HORIZONTAL DESIGN REPEAT:** Nil

**MARTINDALE:** 100,000 Rubs

**WASHING INSTRUCTIONS:**     

Machine wash at 30°C. Gentle cycle. Tumble dry low.

Iron at low temperature. Do not bleach. Dry clean.

\*Colour shades may tend to vary between different dye-lots & production batches

\*Due to variations in computer screens, images presented are not 100% similar to actual fabrics.

**NFPA 701 (FR) - NOT AVAILABLE FOR THIS ARTICLE.**

1371 - 54

AVAILABLE COLOURS

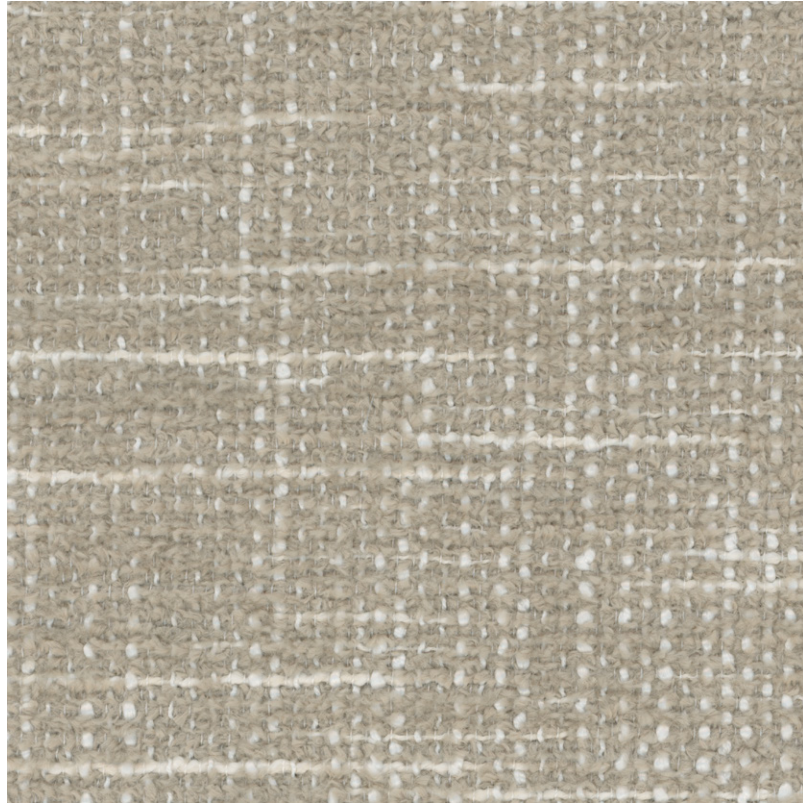


1371 - 60



1371 - 87





1371 - 58

**SUITABLE FOR:** Upholstery 

**COMPOSITION:** Polyester Rayon Natural Fiber

**WIDTH:** 140 CMS (+/- 5 CMS)

**WEIGHT:** 580 GSM

**VERTICAL DESIGN REPEAT:** Nil

**HORIZONTAL DESIGN REPEAT:** Nil

**MARTINDALE:** 65,000 Rubs

**WASHING INSTRUCTIONS:**     

Machine wash at 30°C. Gentle cycle. Tumble dry low.

Iron at low temperature. Do not bleach. Dry clean.

\*Colour shades may tend to vary between different dye-lots & production batches

\*Due to variations in computer screens, images presented are not 100% similar to actual fabrics.

**NFPA 701 (FR) - AVAILABLE ON REQUEST.**

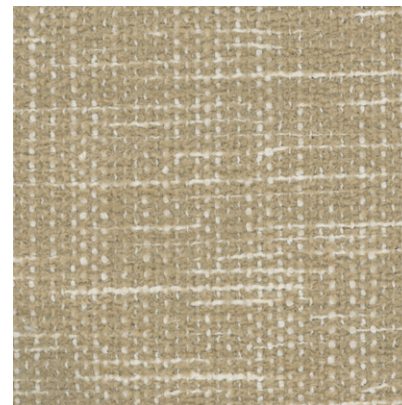
---

AVAILABLE COLOURS

---

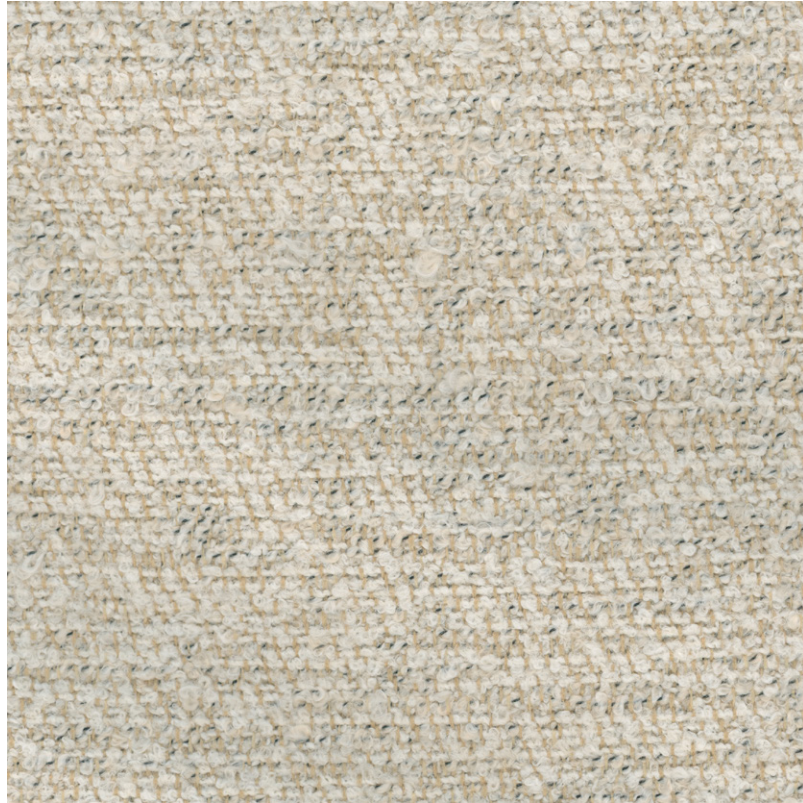


1371 - 66



1371 - 68





1371 - 69

**SUITABLE FOR:** Upholstery 

**COMPOSITION:** Polyester Rayon Natural Fiber

**WIDTH:** 140 CMS (+/- 5 CMS)

**WEIGHT:** 510 GSM

**VERTICAL DESIGN REPEAT:** Nil

**HORIZONTAL DESIGN REPEAT:** Nil

**MARTINDALE:** 50,000 Rubs

**WASHING INSTRUCTIONS:** 

Machine wash at 30°C. Gentle cycle. Tumble dry low.

Iron at low temperature. Do not bleach. Dry clean.

\*Colour shades may tend to vary between different dye-lots & production batches

\*Due to variations in computer screens, images presented are not 100% similar to actual fabrics.

**NFPA 701 (FR) - AVAILABLE ON REQUEST.**

---

AVAILABLE COLOURS

---



1371 - 81



1371 - 86



1371 - 90









ULTRA FABRICS

EST. 1990

ULTRA FURNISHING FABRICS FZCO

Unit 262. Dubai Textile City  
Al Warsan 1, Dubai, UAE

Follow our socials  
ultrafabrics.ae



[www.ultrafabrics.ae](http://www.ultrafabrics.ae)