

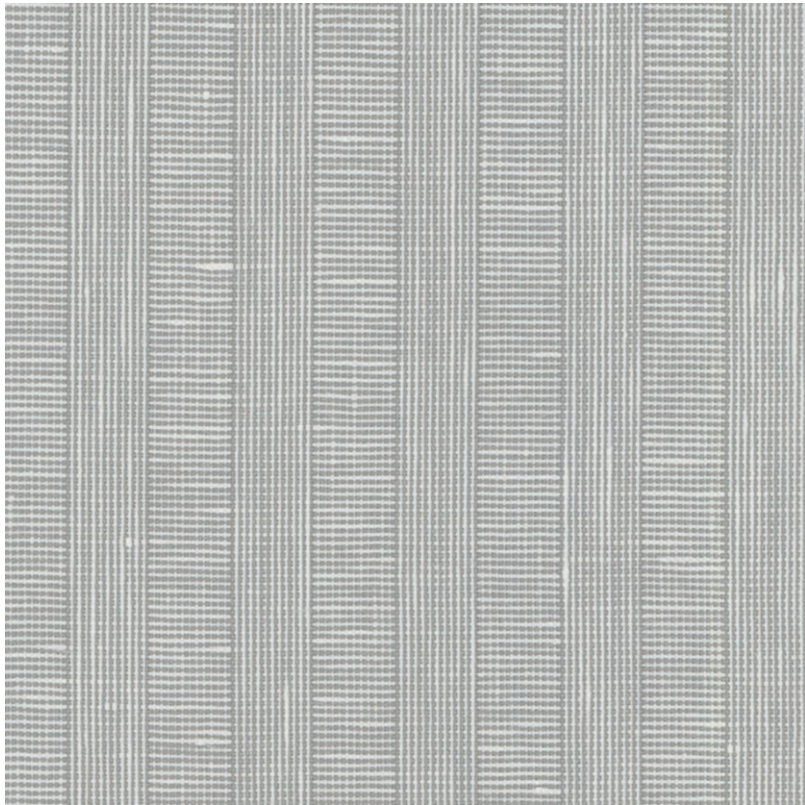
TELARES

CAT NO. 1370



TELARES embodies elegance with a harmonious balance of texture, pattern, and colour. From minimalist sashiko motifs to bold kabuki stripes, this collection offers a variety of design aesthetics. Inspired by nature, hues range from soft, airy cloud and warm ochre to earthy flax and deep ink blue. Embrace the blend of traditional craftsmanship and contemporary design.





1370 - 01

SUITABLE FOR: Drapery & Blinds  

COMPOSITION: 54% Linen, 46% Cotton

WIDTH: 140 CMS (+/- 5 CMS)

WEIGHT: 148 GSM

VERTICAL DESIGN REPEAT: Stripe

HORIZONTAL DESIGN REPEAT: 2.2 CMS

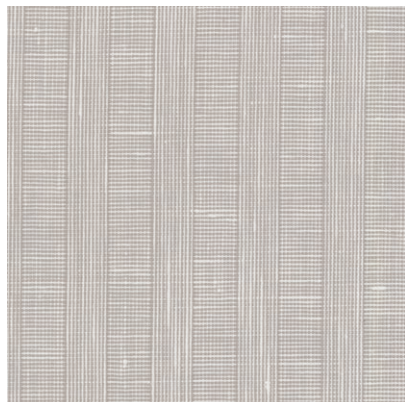
WASHING INSTRUCTIONS:      

Machine wash at 40°C. Iron at medium temperature. Hang dry.
Do not tumble dry. Do not bleach. Dry clean.

*Colour shades may tend to vary between different dye-lots & production batches

*Due to variations in computer screens, images presented are not 100% similar to actual fabrics

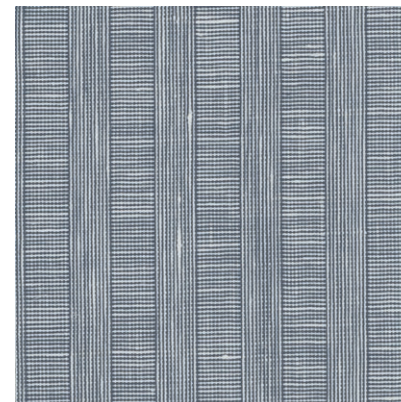
AVAILABLE COLOURS



1370 - 02



1370 - 03



1370 - 04



***Decorative cushion fabrics for illustrative purpose only**



1370 - 05

SUITABLE FOR: Drapery & Blinds  

COMPOSITION: 66% Linen, 34% Cotton

WIDTH: 140 CMS (+/- 5 CMS)

WEIGHT: 158 GSM

VERTICAL DESIGN REPEAT: Nil

HORIZONTAL DESIGN REPEAT: Nil

WASHING INSTRUCTIONS:      

Machine wash at 40°C. Iron at medium temperature. Hang dry.
Do not tumble dry. Do not bleach. Dry clean.

*Colour shades may tend to vary between different dye-lots & production batches

*Due to variations in computer screens, images presented are not 100% similar to actual fabrics

AVAILABLE COLOURS



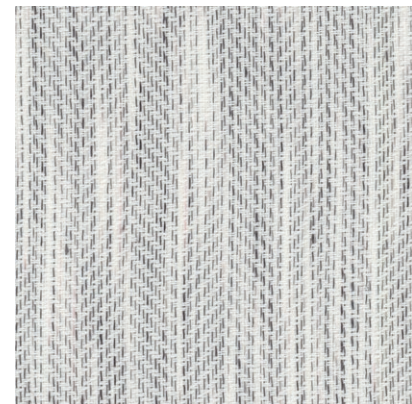
1370 - 06



1370 - 07



1370 - 08



1370 - 09



1370 - 10

SUITABLE FOR: Drapery & Blinds  

COMPOSITION: 62% Linen, 38% Cotton

WIDTH: 140 CMS (+/- 5 CMS)

WEIGHT: 126 GSM

VERTICAL DESIGN REPEAT: 5.2 CMS

HORIZONTAL DESIGN REPEAT: 2.5 CMS

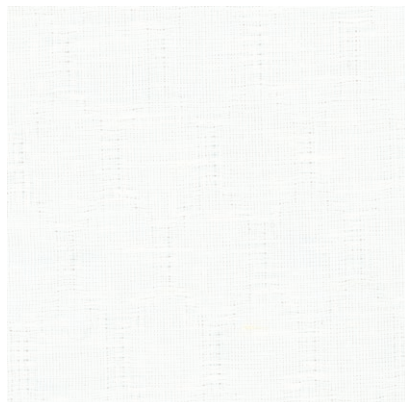
WASHING INSTRUCTIONS:      

Machine wash at 40°C. Iron at medium temperature. Hang dry.
Do not tumble dry. Do not bleach. Dry clean.

*Colour shades may tend to vary between different dye-lots & production batches

*Due to variations in computer screens, images presented are not 100% similar to actual fabrics

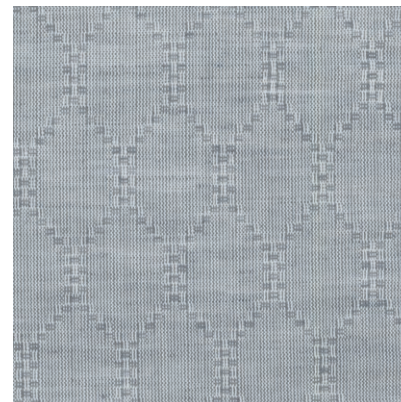
AVAILABLE COLOURS



1370 - 11



1370 - 12



1370 - 13



*Decorative cushion fabrics for interior





1370 - 14

SUITABLE FOR: Drapery & Blinds  

COMPOSITION: 100% Linen

WIDTH: 140 CMS (+/- 5 CMS)

WEIGHT: 165 GSM

VERTICAL DESIGN REPEAT: Nil

HORIZONTAL DESIGN REPEAT: Nil

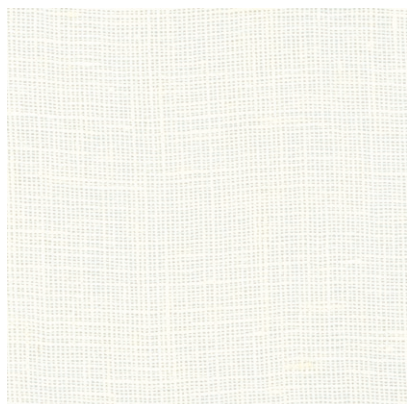
WASHING INSTRUCTIONS:      

Machine wash at 40°C. Iron at medium temperature. Hang dry.
Do not tumble dry. Do not bleach. Dry clean.

*Colour shades may tend to vary between different dye-lots & production batches

*Due to variations in computer screens, images presented are not 100% similar to actual fabrics

AVAILABLE COLOURS



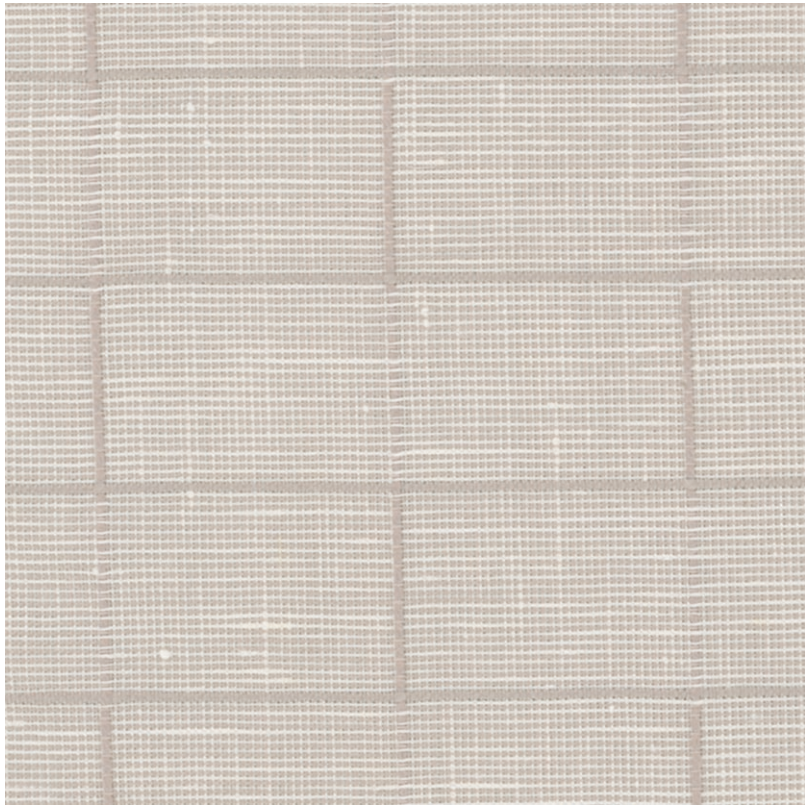
1370 - 15



1370 - 16



1370 - 17



1370 - 18

SUITABLE FOR: Drapery & Blinds  

COMPOSITION: 50% Linen, 50% Cotton

WIDTH: 140 CMS (+/- 5 CMS)

WEIGHT: 135 GSM

VERTICAL DESIGN REPEAT: 5.2 CMS

HORIZONTAL DESIGN REPEAT: 7.6 CMS

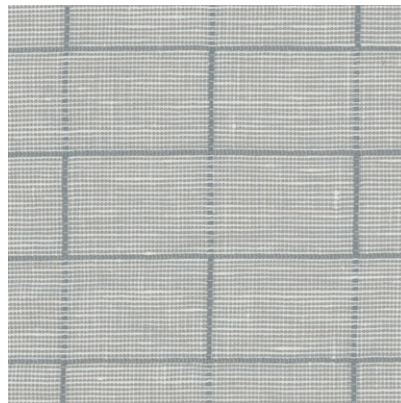
WASHING INSTRUCTIONS:      

Machine wash at 40°C. Iron at medium temperature. Hang dry.
Do not tumble dry. Do not bleach. Dry clean.

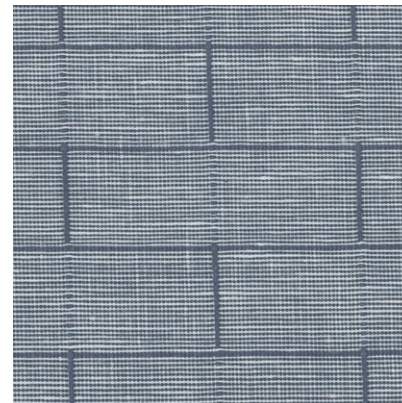
*Colour shades may tend to vary between different dye-lots & production batches

*Due to variations in computer screens, images presented are not 100% similar to actual fabrics

AVAILABLE COLOURS



1370 - 19



1370 - 20



*Decorative cushion fabrics for illustrative purpose only





1370 - 21

SUITABLE FOR: Drapery & Blinds 

COMPOSITION: 44% Linen, 40% Cotton, 16% Viscose

WIDTH: 140 CMS (+/- 5 CMS)

WEIGHT: 286 GSM

VERTICAL DESIGN REPEAT: 3.5 CMS

HORIZONTAL DESIGN REPEAT: 15.5 CMS

WASHING INSTRUCTIONS:      

Machine wash at 40°C. Iron at medium temperature. Hang dry.

Do not tumble dry. Do not bleach. Dry clean.

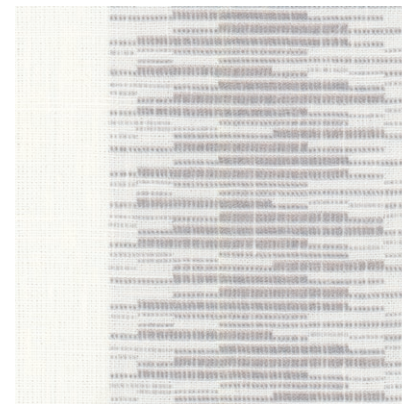
*Colour shades may tend to vary between different dye-lots & production batches

*Due to variations in computer screens, images presented are not 100% similar to actual fabrics

AVAILABLE COLOURS



1370 - 22



1370 - 23



1370 - 24

SUITABLE FOR: Drapery & Blinds 

COMPOSITION: 77% Cotton, 23% Linen

WIDTH: 140 CMS (+/- 5 CMS)

WEIGHT: 142 GSM

VERTICAL DESIGN REPEAT: 3 CMS

HORIZONTAL DESIGN REPEAT: 3.4 CMS

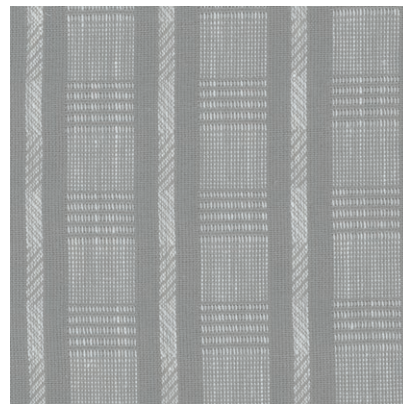
WASHING INSTRUCTIONS:      

Machine wash at 40°C. Iron at medium temperature. Hang dry.
Do not tumble dry. Do not bleach. Dry clean.

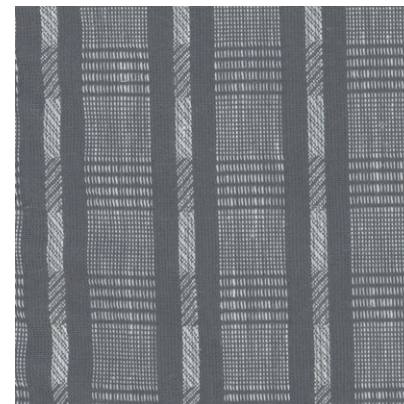
*Colour shades may tend to vary between different dye-lots & production batches

*Due to variations in computer screens, images presented are not 100% similar to actual fabrics

AVAILABLE COLOURS



1370 - 25

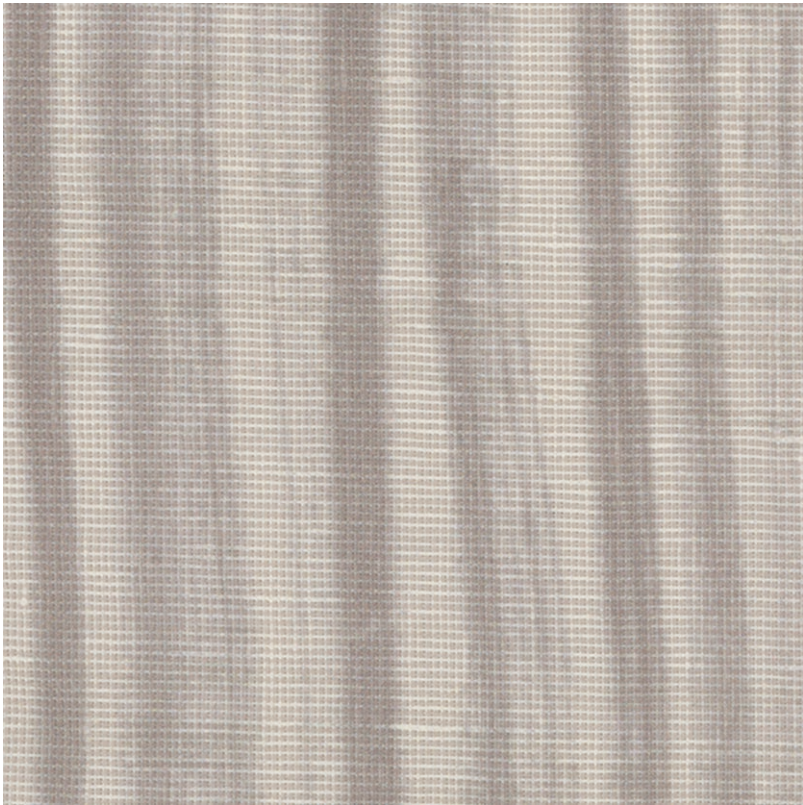


1370 - 26



*Decorative cushion fabrics for illustrative purpose only





1370 - 27

SUITABLE FOR: Drapery & Blinds  

COMPOSITION: 55% Linen, 45% Cotton

WIDTH: 140 CMS (+/- 5 CMS)

WEIGHT: 124 GSM

VERTICAL DESIGN REPEAT: Nil

HORIZONTAL DESIGN REPEAT: Nil

WASHING INSTRUCTIONS:      

Machine wash at 40°C. Iron at medium temperature. Hang dry.
Do not tumble dry. Do not bleach. Dry clean.

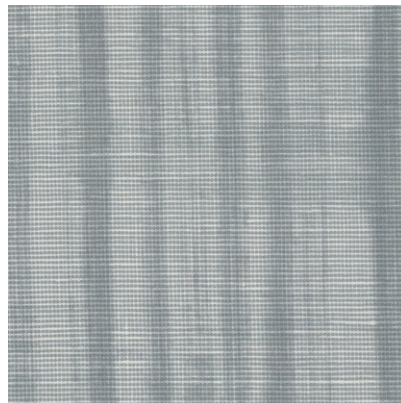
*Colour shades may tend to vary between different dye-lots & production batches

*Due to variations in computer screens, images presented are not 100% similar to actual fabrics

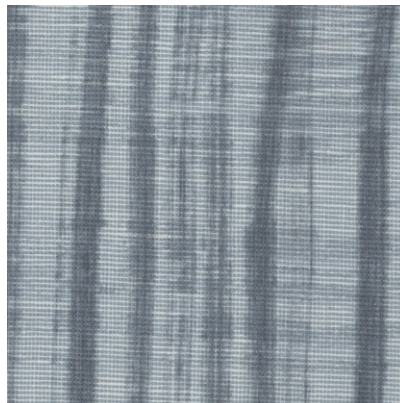
AVAILABLE COLOURS



1370 - 28



1370 - 29



1370 - 30



1370- 31



ULTRA FABRICS

EST. 1990

ULTRA FURNISHING FABRICS FZCO

Unit 262. Dubai Textile City
Al Warsan 1, Dubai, UAE

Follow our socials
ultrafabrics.ae



www.ultrafabrics.ae