

BREEZE (SHEEN II)

CAT NO. 2043

Create a serene and sophisticated atmosphere with our Breeze collection. These sheer fabrics feature dry textures that lend a crisp and modern look to your interiors. Combining motifs of waffle, abstract foils, and stripes with a natural palette of sand, pebble, and porcelain lends the warmth craved by your space.





SUITABLE FOR: Drapery & Blinds 

COMPOSITION: 83% Poly, 17% Cotton

WIDTH: 295CM (+/-5CM)

WEIGHT: 112GSM

VERTICAL DESIGN REPEAT: 34.5CMS

HORIZONTAL DESIGN REPEAT: 27.2CMS

WASHING INSTRUCTIONS: (Dry Clean Only)     

*Fabric With Lead Band

*Colour shades may tend to vary between different dye-lots & production batches

*Due to variations in computer screens, images presented are not 100% similar to actual fabrics

2043 - 01

AVAILABLE COLOURS



2043 - 61



2043 - 73



2043 - 77



SUITABLE FOR: Drapery & Blinds  

COMPOSITION: 95% Poly, 5% Cotton

WIDTH: 300CM (+/-5CM)

WEIGHT: 138GSM

VERTICAL DESIGN REPEAT: 9CMS

HORIZONTAL DESIGN REPEAT: 9CMS

WASHING INSTRUCTIONS: (Dry Clean Only)     

*Fabric With Lead Band

*Colour shades may tend to vary between different dye-lots & production batches

*Due to variations in computer screens, images presented are not 100% similar to actual fabrics

2043 - 02

AVAILABLE COLOURS



2043 - 67



SUITABLE FOR: Drapery & Blinds  

COMPOSITION: 30% Poly, 70% Cotton

WIDTH: 310CM (+/-5CM)

WEIGHT: 120GSM

VERTICAL DESIGN REPEAT: Nil

HORIZONTAL DESIGN REPEAT: Nil

WASHING INSTRUCTIONS: (Dry Clean Only)     

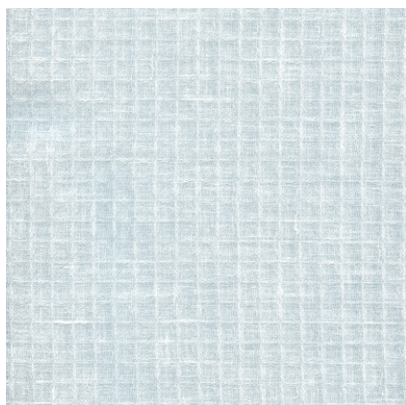
*Fabric With Lead Band

*Colour shades may tend to vary between different dye-lots & production batches

*Due to variations in computer screens, images presented are not 100% similar to actual fabrics

2043 - 03

AVAILABLE COLOURS



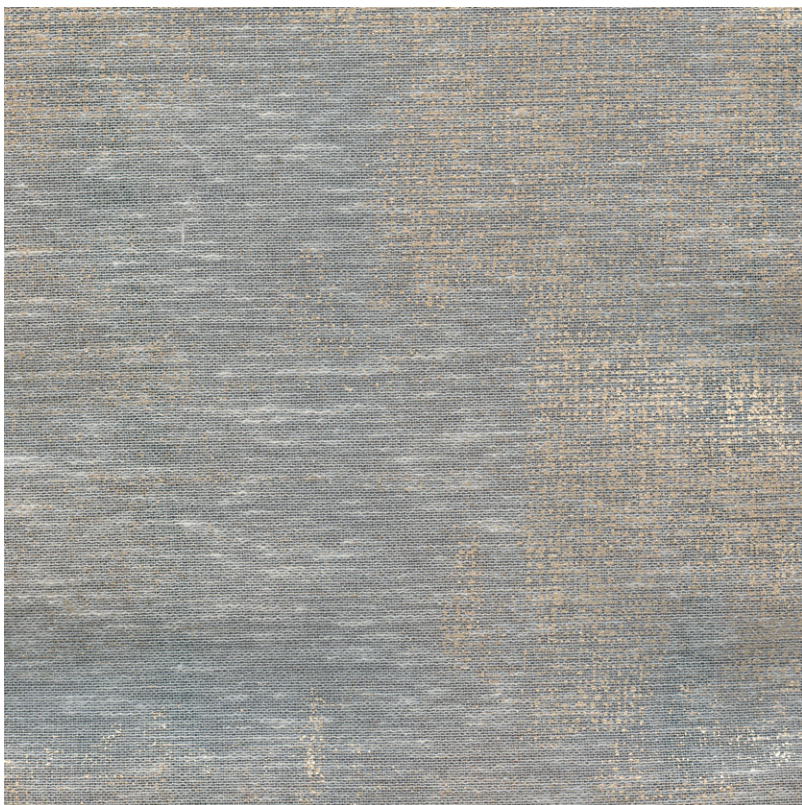
2043 - 31



2043 - 40



2043 - 78



SUITABLE FOR: Drapery & Blinds  


COMPOSITION: Polyester Rayon Natural Fibre

WIDTH: 300CM(+/-5CM)

WEIGHT: 70GSM

VERTICAL DESIGN REPEAT: Nil

HORIZONTAL DESIGN REPEAT: Nil

WASHING INSTRUCTIONS: (Dry Clean Only)     

*Fabric With Lead Band

*Colour shades may tend to vary between different dye-lots & production batches

*Due to variations in computer screens, images presented are not 100% similar to actual fabrics

2043 - 04

AVAILABLE COLOURS



2043 - 28



2043 - 70



2043 - 05

SUITABLE FOR: Drapery & Blinds  

COMPOSITION: 75% Poly, 25% Cotton

WIDTH: 300CM (+/-5CM)

WEIGHT: 106GSM

VERTICAL DESIGN REPEAT: Nil

HORIZONTAL DESIGN REPEAT: Nil

WASHING INSTRUCTIONS: (Dry Clean Only)     

*Fabric With Lead Band

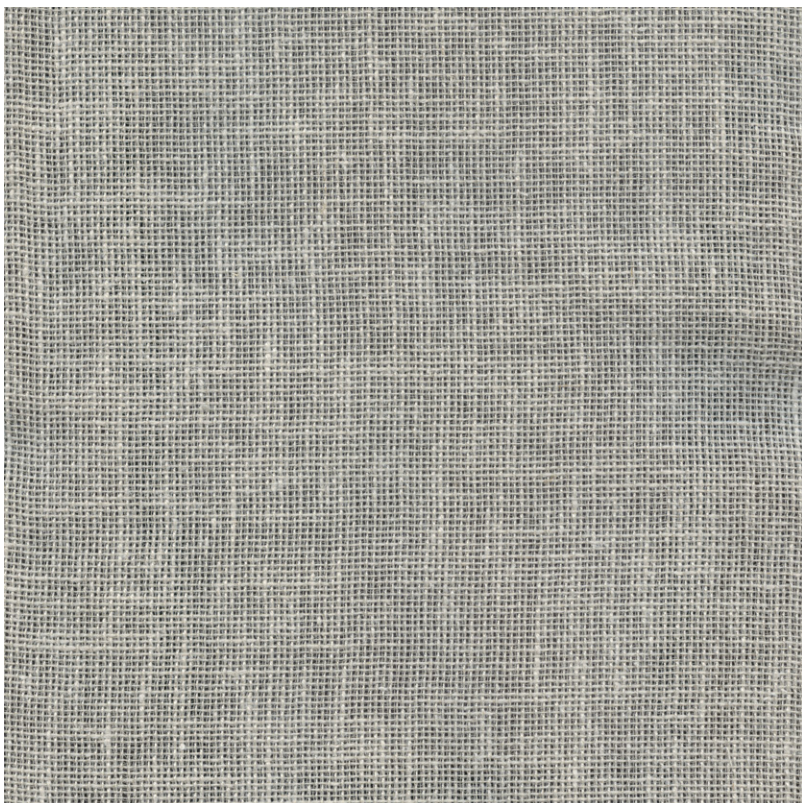
*Colour shades may tend to vary between different dye-lots & production batches

*Due to variations in computer screens, images presented are not 100% similar to actual fabrics

AVAILABLE COLOURS



2043 - 27



SUITABLE FOR: Drapery & Blinds 

COMPOSITION: 77% Poly, 23% Cotton

WIDTH: 310CM (+/-5CM)

WEIGHT: 120GSM

VERTICAL DESIGN REPEAT: Nil

HORIZONTAL DESIGN REPEAT: Nil

WASHING INSTRUCTIONS: (Dry Clean Only)     ®

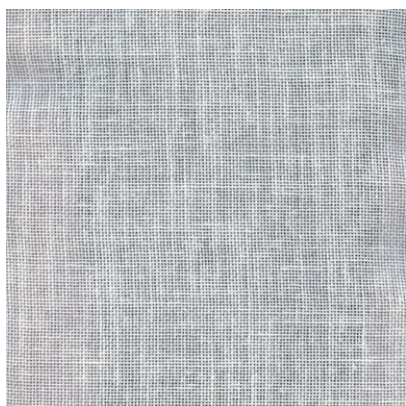
*Fabric With Lead Band

*Colour shades may tend to vary between different dye-lots & production batches

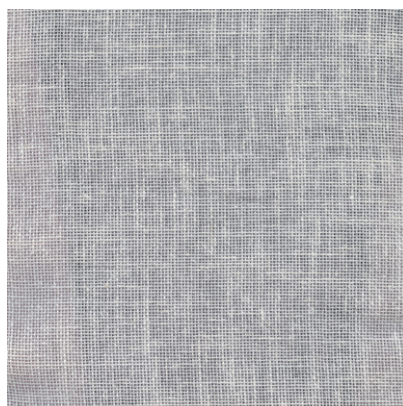
*Due to variations in computer screens, images presented are not 100% similar to actual fabrics

2043 - 06

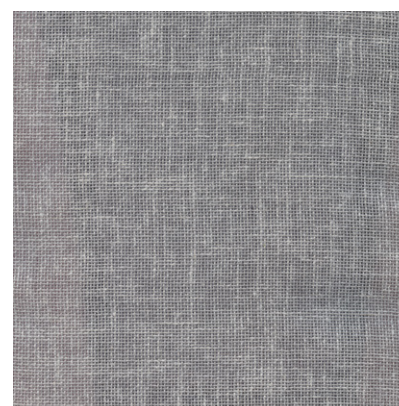
AVAILABLE COLOURS



2043 - 38



2043 - 62



2043 - 71



SUITABLE FOR: Drapery & Blinds 

COMPOSITION: 74% Poly, 26% Cotton

WIDTH: 310CM (+/-5CM)

WEIGHT: 165GSM

VERTICAL DESIGN REPEAT: Nil

HORIZONTAL DESIGN REPEAT: Nil

WASHING INSTRUCTIONS: (Dry Clean Only)     

*Fabric With Lead Band

*Colour shades may tend to vary between different dye-lots & production batches

*Due to variations in computer screens, images presented are not 100% similar to actual fabrics

2043 - 07

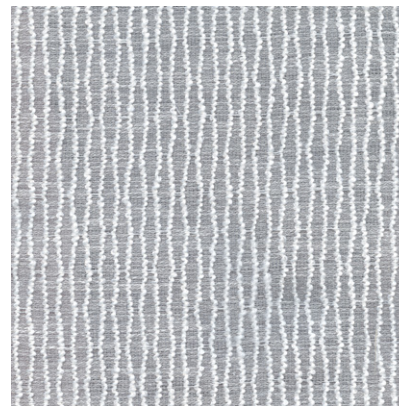
AVAILABLE COLOURS



2043 - 29



2043 - 45



2043 - 72



SUITABLE FOR: Drapery & Blinds  

COMPOSITION: 58% Poly, 23% Linen, 19% Cotton

WIDTH: 300CM(+/-5CM)

WEIGHT: 154GSM

VERTICAL DESIGN REPEAT: 17.2CMS

HORIZONTAL DESIGN REPEAT: 10.4CMS

WASHING INSTRUCTIONS: (Dry Clean Only)      

*Fabric With Lead Band

*Colour shades may tend to vary between different dye-lots & production batches

*Due to variations in computer screens, images presented are not 100% similar to actual fabrics

2043 - 08

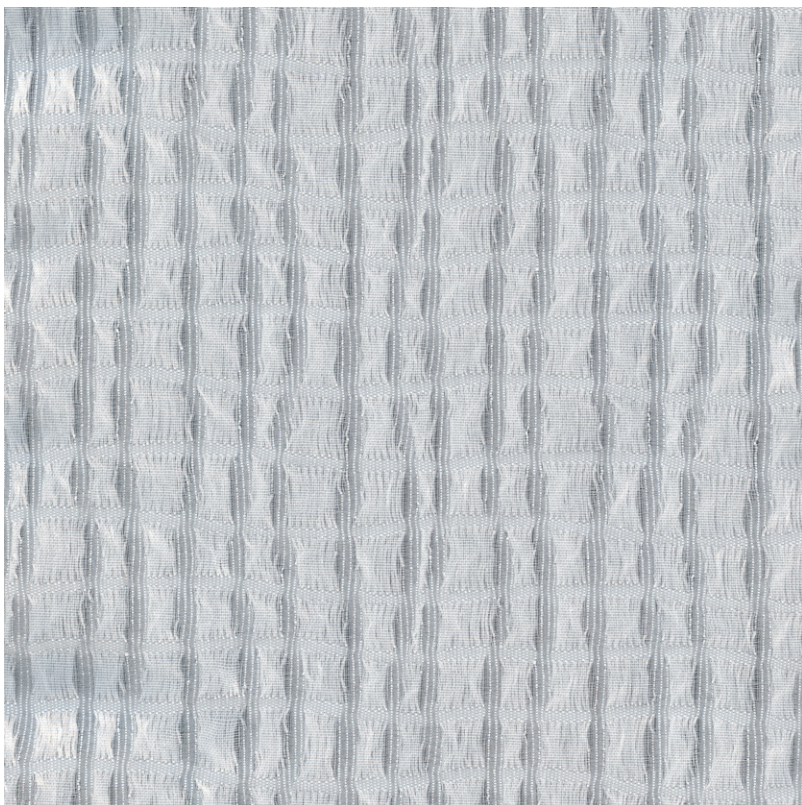
AVAILABLE COLOURS



2043 - 36



2043 - 65



SUITABLE FOR: Drapery & Blinds 

COMPOSITION: Polyester Rayon Natural Fibre

WIDTH: 300CM(+/-5CM)

WEIGHT: 111GSM

VERTICAL DESIGN REPEAT: 9CMS

HORIZONTAL DESIGN REPEAT: 8.4CMS

WASHING INSTRUCTIONS: (Dry Clean Only)     

*Fabric With Lead Band

*Colour shades may tend to vary between different dye-lots & production batches

*Due to variations in computer screens, images presented are not 100% similar to actual fabrics

2043 - 09

AVAILABLE COLOURS

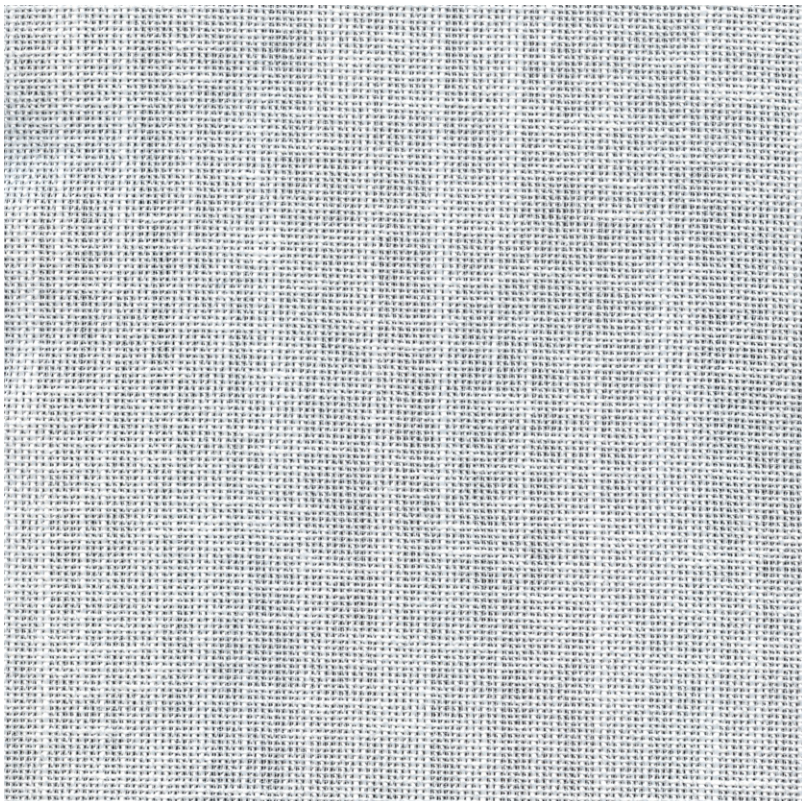


2043 - 52



2043 - 68





SUITABLE FOR: Drapery & Blinds 

COMPOSITION: 74% Poly, 16% Cotton, 10% Cationic

WIDTH: 310CM (+/-5CM)

WEIGHT: 180GSM

VERTICAL DESIGN REPEAT: Nil

HORIZONTAL DESIGN REPEAT: Nil

WASHING INSTRUCTIONS: (Dry Clean Only)     ®

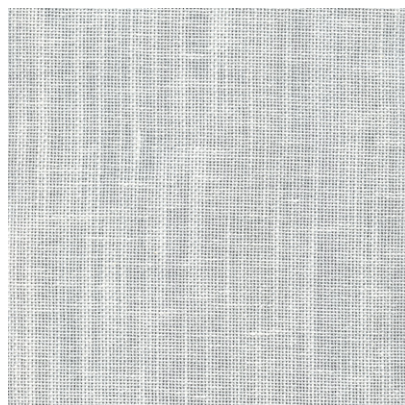
*Fabric With Lead Band

*Colour shades may tend to vary between different dye-lots & production batches

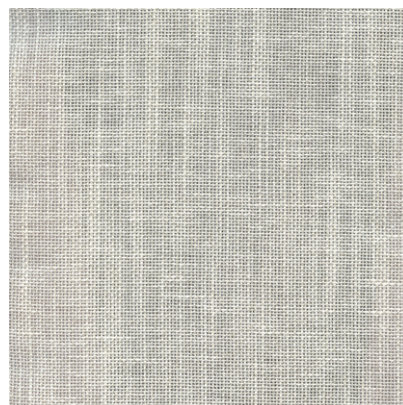
*Due to variations in computer screens, images presented are not 100% similar to actual fabrics

2043 - 10

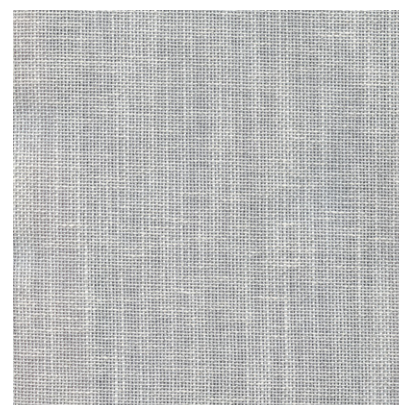
AVAILABLE COLOURS



2043 - 33



2043 - 46



2043 - 75



SUITABLE FOR: Drapery & Blinds  


COMPOSITION: Polyester Rayon Natural Fibre

WIDTH: 310CM(+/-5CM)

WEIGHT: 150GSM

VERTICAL DESIGN REPEAT: Nil

HORIZONTAL DESIGN REPEAT: Nil

WASHING INSTRUCTIONS: (Dry Clean Only)     

*Fabric With Lead Band

*Colour shades may tend to vary between different dye-lots & production batches

*Due to variations in computer screens, images presented are not 100% similar to actual fabrics

2043 - 11

AVAILABLE COLOURS



2043 - 41



2043 - 74



SUITABLE FOR: Drapery & Blinds  

COMPOSITION: Polyester Rayon Natural Fibre

WIDTH: 300CM(+/-5CM)

WEIGHT: 47GSM

VERTICAL DESIGN REPEAT: Nil

HORIZONTAL DESIGN REPEAT: Nil

WASHING INSTRUCTIONS: (Dry Clean Only)     

*Fabric With Lead Band

*Colour shades may tend to vary between different dye-lots & production batches

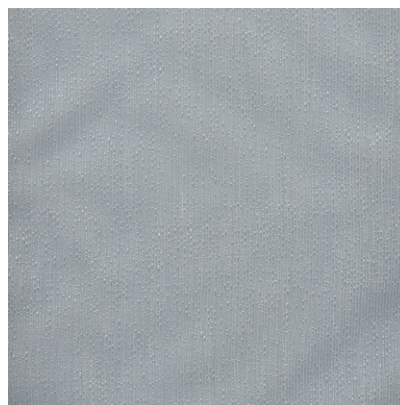
*Due to variations in computer screens, images presented are not 100% similar to actual fabrics

2043 - 12

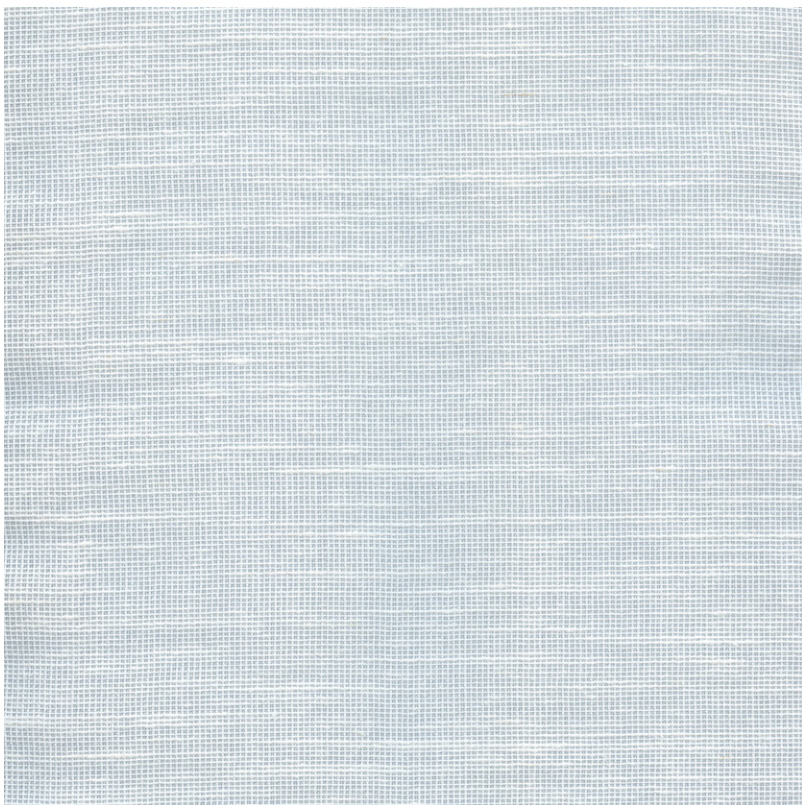
AVAILABLE COLOURS



2043 - 58



2043 - 69



SUITABLE FOR: Drapery & Blinds  


COMPOSITION: 89% Poly, 11% Linen

WIDTH: 310CM (+/-5CM)

WEIGHT: 160GSM

VERTICAL DESIGN REPEAT: Nil

HORIZONTAL DESIGN REPEAT: Nil

WASHING INSTRUCTIONS: (Dry Clean Only)      ®

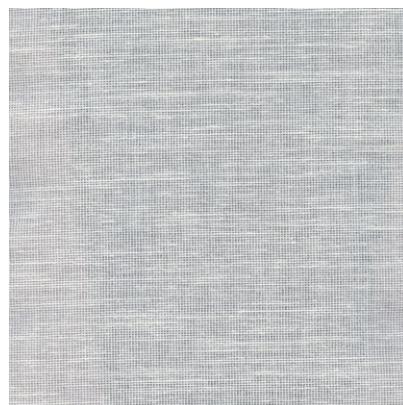
*Fabric With Lead Band

*Colour shades may tend to vary between different dye-lots & production batches

*Due to variations in computer screens, images presented are not 100% similar to actual fabrics

2043 - 13

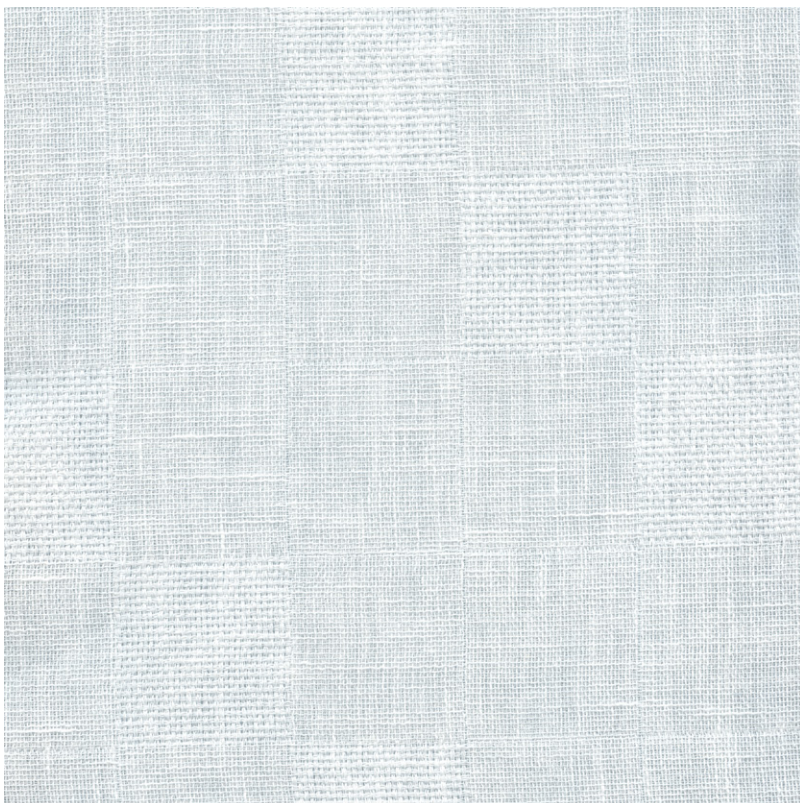
AVAILABLE COLOURS



2043 - 44



2043 - 49



2043 - 14

SUITABLE FOR: Drapery & Blinds 






COMPOSITION: 70% Cotton, 30% Poly

WIDTH: 310CM(+/-5CM)

WEIGHT: 155GSM

VERTICAL DESIGN REPEAT: 17.2CMS

HORIZONTAL DESIGN REPEAT: 16CMS

WASHING INSTRUCTIONS: (Dry Clean Only)     

*Fabric With Lead Band

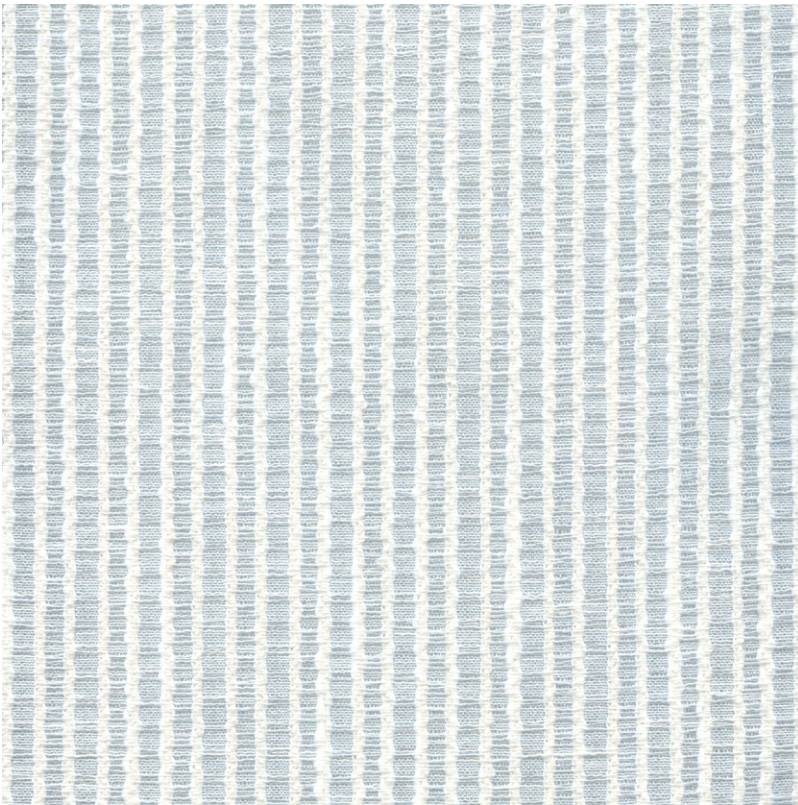
*Colour shades may tend to vary between different dye-lots & production batches

*Due to variations in computer screens, images presented are not 100% similar to actual fabrics

AVAILABLE COLOURS



2043 - 56



SUITABLE FOR: Drapery & Blinds 

COMPOSITION: 40% Poly, 30% Cotton, 30% Linen

WIDTH: 310CM(+/-5CM)

WEIGHT: 285GSM

VERTICAL DESIGN REPEAT: Nil

HORIZONTAL DESIGN REPEAT: Nil

WASHING INSTRUCTIONS: (Dry Clean Only)     

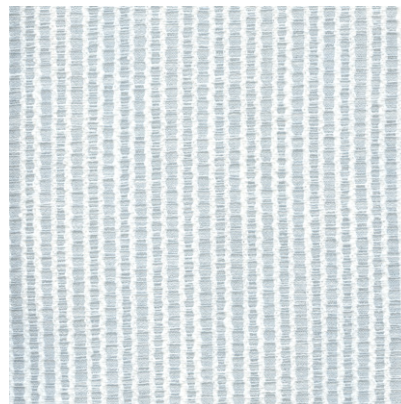
*Fabric With Lead Band

*Colour shades may tend to vary between different dye-lots & production batches

*Due to variations in computer screens, images presented are not 100% similar to actual fabrics

2043 - 15

AVAILABLE COLOURS



2043 - 30



SUITABLE FOR: Drapery & Blinds  

COMPOSITION: 90% Poly, 10% Cationic

WIDTH: 310CM (+/-5CM)

WEIGHT: 95GSM

VERTICAL DESIGN REPEAT: Nil

HORIZONTAL DESIGN REPEAT: Nil

WASHING INSTRUCTIONS: (Dry Clean Only)      

*Fabric With Lead Band

*Colour shades may tend to vary between different dye-lots & production batches

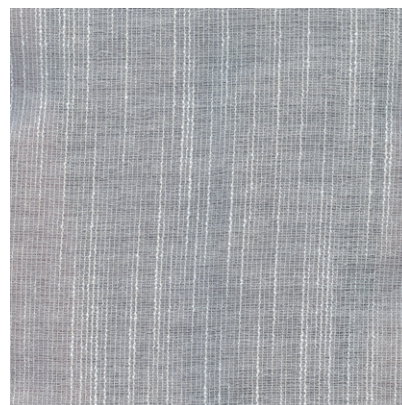
*Due to variations in computer screens, images presented are not 100% similar to actual fabrics

2043 - 16

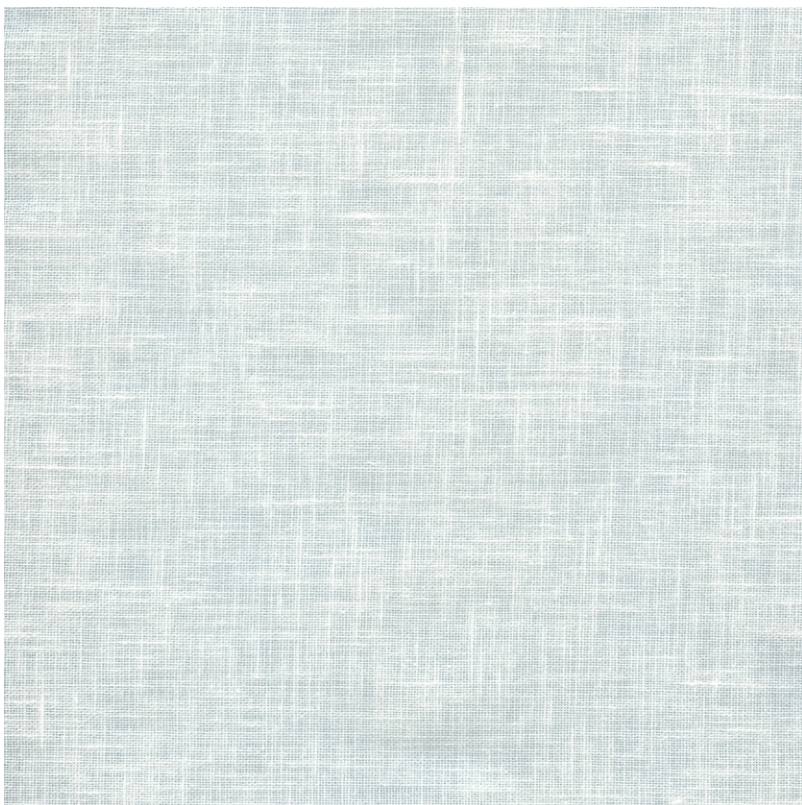
AVAILABLE COLOURS



2043 - 59



2043 - 76



SUITABLE FOR: Drapery & Blinds  


COMPOSITION: 66% Poly, 34% Cotton

WIDTH: 300CM (+/-5CM)

WEIGHT: 116GSM

VERTICAL DESIGN REPEAT: Nil

HORIZONTAL DESIGN REPEAT: Nil

WASHING INSTRUCTIONS: (Dry Clean Only)           





SUITABLE FOR: Drapery & Blinds 

COMPOSITION: Polyester Rayon Natural Fibre

WIDTH: 295CM (+/-5CM)

WEIGHT: 137GSM

VERTICAL DESIGN REPEAT: 35CMS

HORIZONTAL DESIGN REPEAT: 30.5CMS

WASHING INSTRUCTIONS: (Dry Clean Only)     

*Fabric With Lead Band

*Colour shades may tend to vary between different dye-lots & production batches

*Due to variations in computer screens, images presented are not 100% similar to actual fabrics

2043 - 18

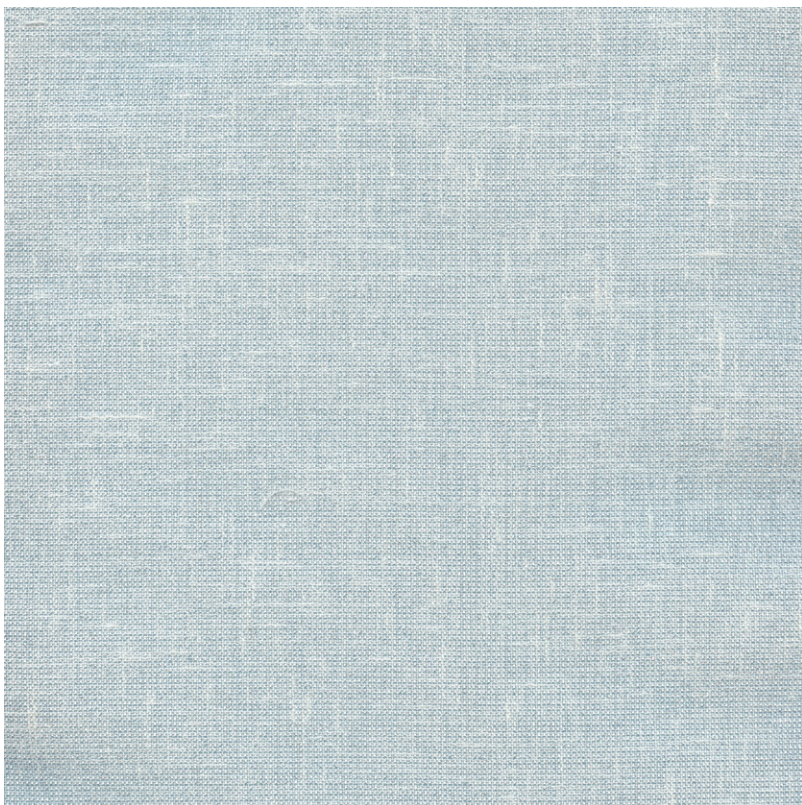
AVAILABLE COLOURS



2043 - 39



2043 - 53



2043 - 19

SUITABLE FOR: Drapery & Blinds  

COMPOSITION: 40% Poly, 30% Cotton, 30% Linen

WIDTH: 310CM (+/-5CM)

WEIGHT: 95GSM

VERTICAL DESIGN REPEAT: Nil

HORIZONTAL DESIGN REPEAT: Nil

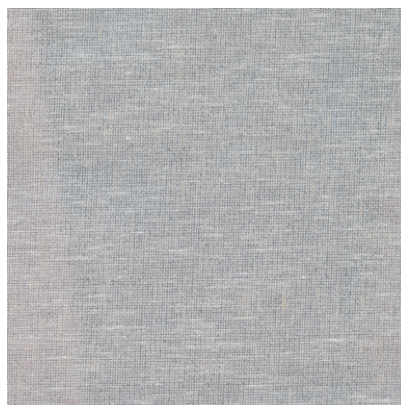
WASHING INSTRUCTIONS: (Dry Clean Only)      

*Fabric With Lead Band

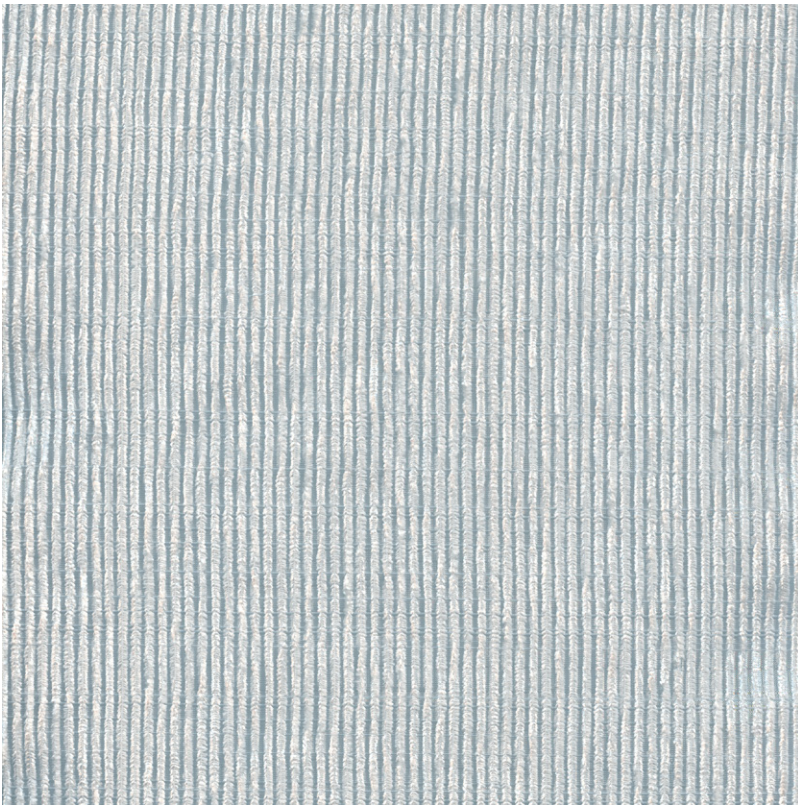
*Colour shades may tend to vary between different dye-lots & production batches

*Due to variations in computer screens, images presented are not 100% similar to actual fabrics

AVAILABLE COLOURS



2043 - 63



SUITABLE FOR: Drapery & Blinds 

COMPOSITION: 90% Poly, 10% Cationic

WIDTH: 310CM (+/-5CM)

WEIGHT: 140GSM

VERTICAL DESIGN REPEAT: Nil

HORIZONTAL DESIGN REPEAT: Nil

WASHING INSTRUCTIONS: (Dry Clean Only)     

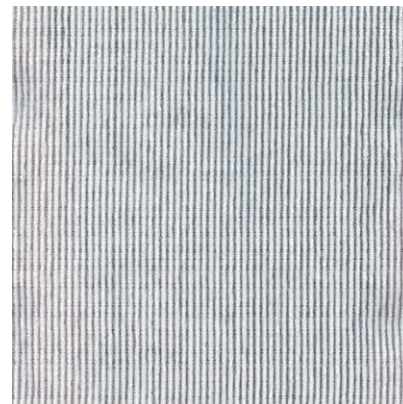
*Fabric With Lead Band

*Colour shades may tend to vary between different dye-lots & production batches

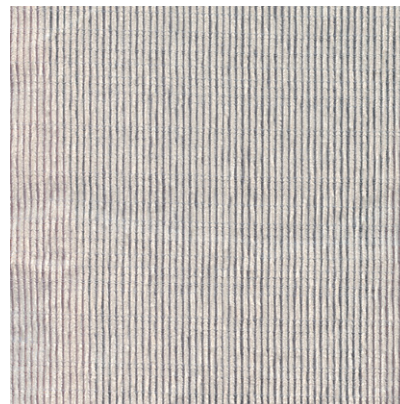
*Due to variations in computer screens, images presented are not 100% similar to actual fabrics

2043 - 20

AVAILABLE COLOURS



2043 - 34



2043 - 48



SUITABLE FOR: Drapery & Blinds 


COMPOSITION: 86% Poly, 14% Cotton

WIDTH: 300CM (+/-5CM)

WEIGHT: 128GSM

VERTICAL DESIGN REPEAT: 17.5CMS

HORIZONTAL DESIGN REPEAT: 20.5CMS

WASHING INSTRUCTIONS: (Dry Clean Only)     

*Fabric With Lead Band

*Colour shades may tend to vary between different dye-lots & production batches

*Due to variations in computer screens, images presented are not 100% similar to actual fabrics

2043 - 21

AVAILABLE COLOURS



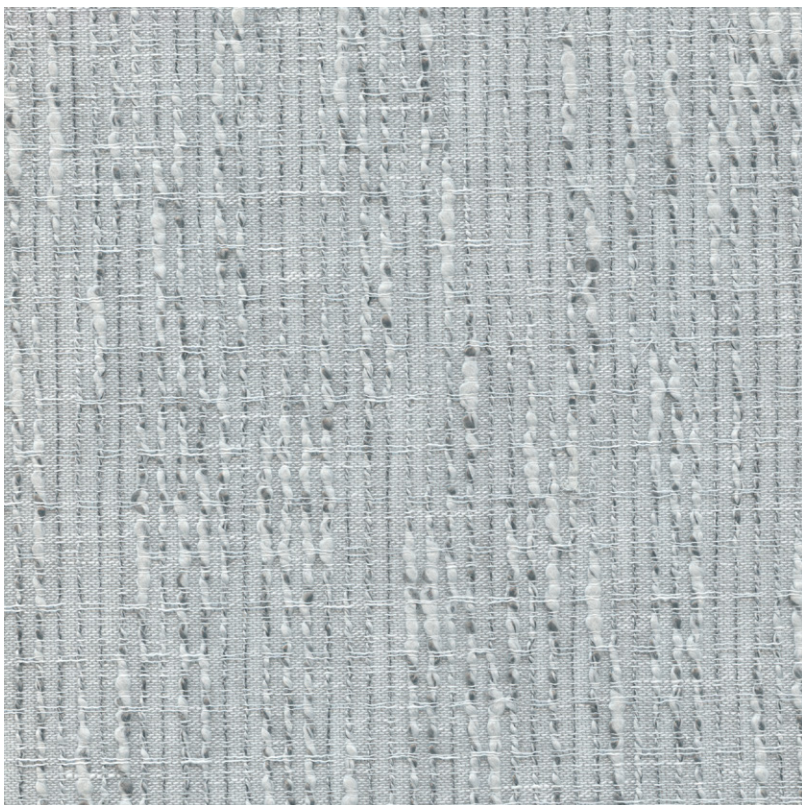
2043 - 37



2043 - 51



2043 - 54



SUITABLE FOR: Drapery & Blinds  


COMPOSITION: 43% Poly, 57% Cotton

WIDTH: 310CM (+/-5CM)

WEIGHT: 195GSM

VERTICAL DESIGN REPEAT: Nil

HORIZONTAL DESIGN REPEAT: Nil

WASHING INSTRUCTIONS: (Dry Clean Only)     

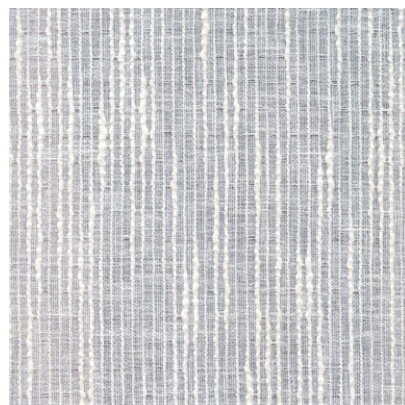
*Fabric With Lead Band

*Colour shades may tend to vary between different dye-lots & production batches

*Due to variations in computer screens, images presented are not 100% similar to actual fabrics

2043 - 22

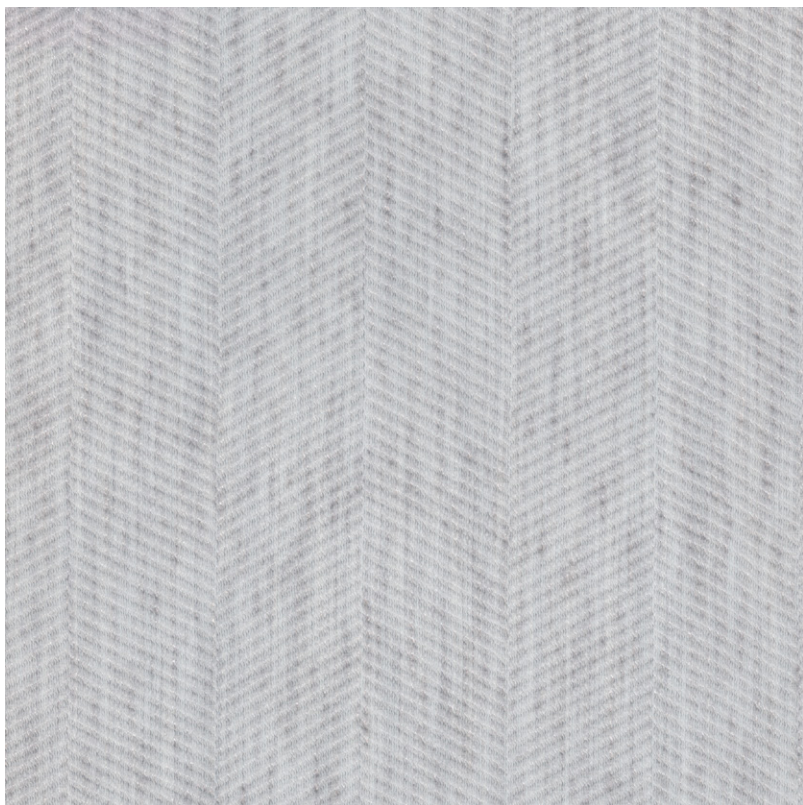
AVAILABLE COLOURS



2043 - 47



2043 - 55



SUITABLE FOR: Drapery & Blinds  

COMPOSITION: Polyester Rayon Natural Fibre

WIDTH: 310CM (+/-5CM)

WEIGHT: 85GSM

VERTICAL DESIGN REPEAT: Nil

HORIZONTAL DESIGN REPEAT: 6.5CMS

WASHING INSTRUCTIONS: (Dry Clean Only)     

*Fabric With Lead Band

*Colour shades may tend to vary between different dye-lots & production batches

*Due to variations in computer screens, images presented are not 100% similar to actual fabrics

2043 - 23

AVAILABLE COLOURS



2043 - 32



2043 - 42



2043 - 57



SUITABLE FOR: Drapery & Blinds  


COMPOSITION: 86% Poly, 14% Cotton

WIDTH: 295CM (+/-5CM)

WEIGHT: 57GSM

VERTICAL DESIGN REPEAT: 5.8CMS

HORIZONTAL DESIGN REPEAT: 5CMS

WASHING INSTRUCTIONS: (Dry Clean Only)      

*Fabric With Lead Band

*Colour shades may tend to vary between different dye-lots & production batches

*Due to variations in computer screens, images presented are not 100% similar to actual fabrics

2043 - 24

AVAILABLE COLOURS



2043 - 25

SUITABLE FOR: Drapery & Blinds  

COMPOSITION: Polyester Rayon Natural Fibre

WIDTH: 310CM (+/-5CM)

WEIGHT: 115GSM

VERTICAL DESIGN REPEAT: 13.75

HORIZONTAL DESIGN REPEAT: 13.3

WASHING INSTRUCTIONS: (Dry Clean Only)      

*Fabric With Lead Band

*Colour shades may tend to vary between different dye-lots & production batches

*Due to variations in computer screens, images presented are not 100% similar to actual fabrics

AVAILABLE COLOURS



2043 - 35



2043 - 43



2043 - 50



SUITABLE FOR: Drapery & Blinds  


COMPOSITION: 86% Poly, 14% Cotton

WIDTH: 295CM (+/-5CM)

WEIGHT: 57GSM

VERTICAL DESIGN REPEAT: 34.5CMS

HORIZONTAL DESIGN REPEAT: 44CMS

WASHING INSTRUCTIONS: (Dry Clean Only)     

*Fabric With Lead Band

*Colour shades may tend to vary between different dye-lots & production batches

*Due to variations in computer screens, images presented are not 100% similar to actual fabrics

2043 - 26

AVAILABLE COLOURS



2043 - 66



ULTRA FABRICS

EST. 1990

ULTRA FURNISHING FABRICS FZCO

Unit 262. Dubai Textile City
Al Warsan 1, Dubai, UAE

Follow our socials
ultrafabrics.ae



www.ultrafabrics.ae