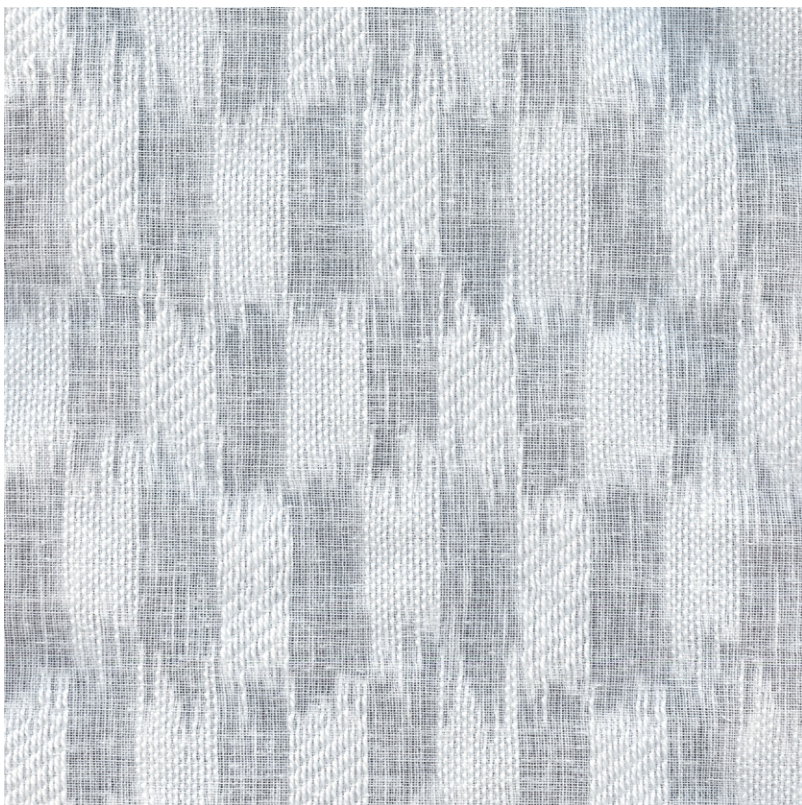


DRIFT (SHEEN I)

CAT NO. 2042

A stunning collection of sheer fabric featuring intricate motifs of classic herringbone, large-scale prints, and fil coupe. Drift comes in a neutral color palette of pearl, ash, and hazelwood, making it the ideal addition to any interior design scheme. This collection is perfect for adding privacy while still maintaining expanse.





SUITABLE FOR: Drapery & Blinds  

COMPOSITION: 91% Poly, 9% Cotton

WIDTH: 295CM (+/-5CM)

WEIGHT: 270GSM

VERTICAL DESIGN REPEAT: 17.3CM

HORIZONTAL DESIGN REPEAT: 6.7CM

WASHING INSTRUCTIONS: (Dry Clean Only)      ®

*Fabric With Lead Band

*Colour shades may tend to vary between different dye-lots & production batches

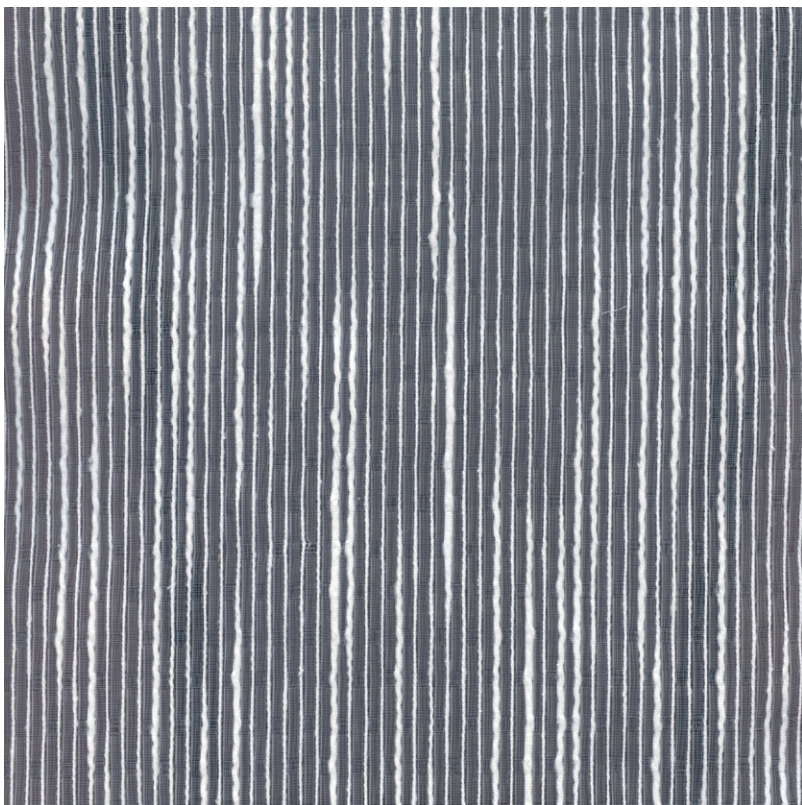
*Due to variations in computer screens, images presented are not 100% similar to actual fabrics

2042 - 01

AVAILABLE COLOURS



2042 - 69



2042 - 02

SUITABLE FOR: Drapery & Blinds  

COMPOSITION: 27% Poly, 73% Cotton

WIDTH: 295CM (+/-5CM)

WEIGHT: 67GSM

VERTICAL DESIGN REPEAT: Nil

HORIZONTAL DESIGN REPEAT: Nil

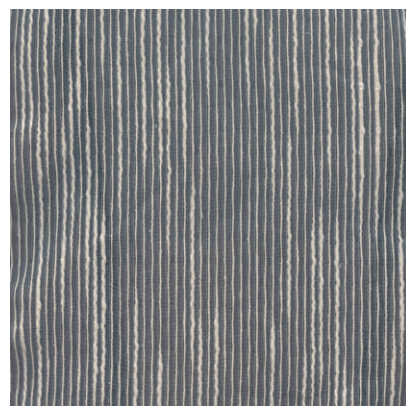
WASHING INSTRUCTIONS: (Dry Clean Only)     

*Fabric With Lead Band

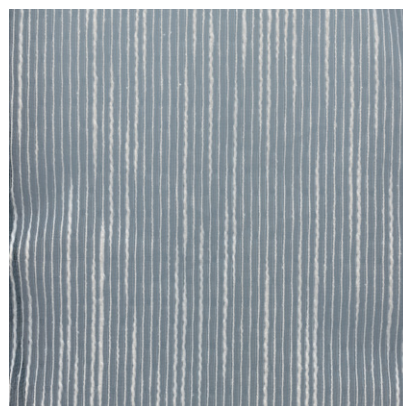
*Colour shades may tend to vary between different dye-lots & production batches

*Due to variations in computer screens, images presented are not 100% similar to actual fabrics

AVAILABLE COLOURS



2042 - 55



2042 - 67



SUITABLE FOR: Drapery & Blinds  

COMPOSITION: 83% Poly, 17% Cotton

WIDTH: 300CM (+/-5CM)

WEIGHT: 156GSM

VERTICAL DESIGN REPEAT: Nil

HORIZONTAL DESIGN REPEAT: Nil

WASHING INSTRUCTIONS: (Dry Clean Only)      

*Fabric With Lead Band

*Colour shades may tend to vary between different dye-lots & production batches

*Due to variations in computer screens, images presented are not 100% similar to actual fabrics

2042 - 03

AVAILABLE COLOURS



2042 - 47



2042 - 66





2042 - 04

SUITABLE FOR: Drapery & Blinds 

COMPOSITION: 83% Poly, 17% Cotton

WIDTH: 310CM (+/-5CM))

WEIGHT: 250GSM

VERTICAL DESIGN REPEAT: Nil

HORIZONTAL DESIGN REPEAT: Nil

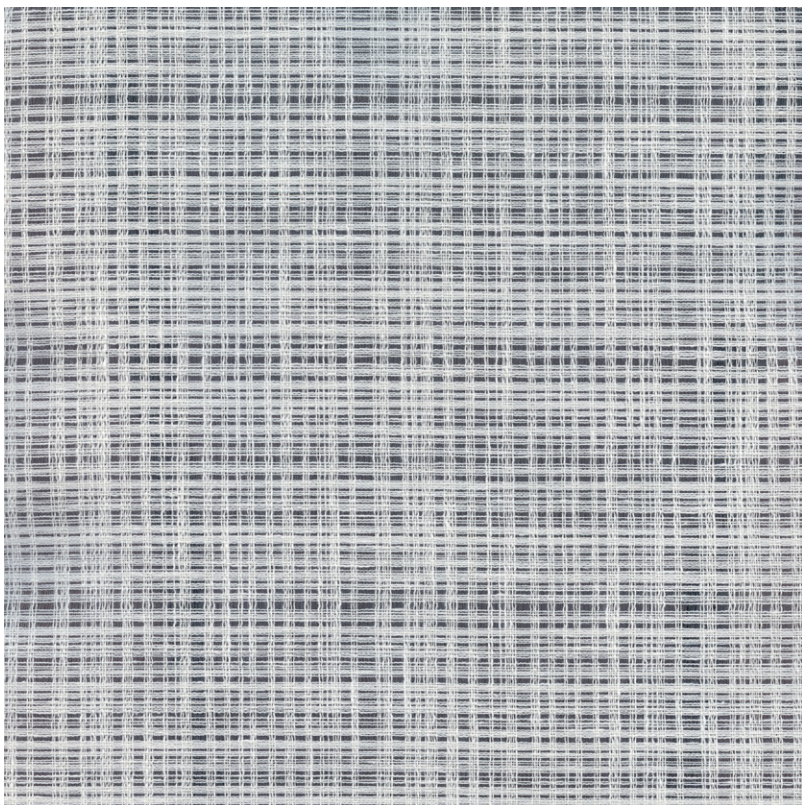
WASHING INSTRUCTIONS: (Dry Clean Only) 

*Fabric With Lead Band

*Colour shades may tend to vary between different dye-lots & production batches

*Due to variations in computer screens, images presented are not 100% similar to actual fabrics

NO AVAILABLE COLOURS



SUITABLE FOR: Drapery & Blinds 


COMPOSITION: 73% Poly, 27% Cotton

WIDTH: 310CM (+/-5CM)

WEIGHT: 95GSM

VERTICAL DESIGN REPEAT: Nil

HORIZONTAL DESIGN REPEAT: Nil

WASHING INSTRUCTIONS: (Dry Clean Only)      

*Fabric With Lead Band

*Colour shades may tend to vary between different dye-lots & production batches

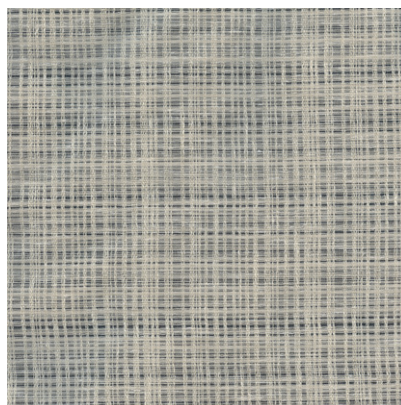
*Due to variations in computer screens, images presented are not 100% similar to actual fabrics

2042 - 05

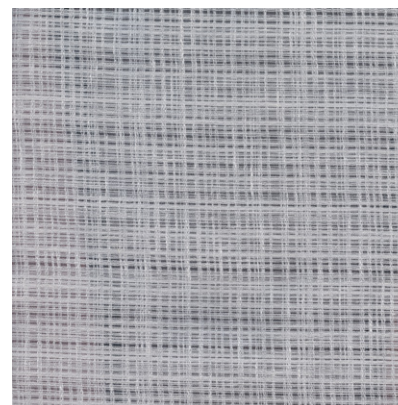
AVAILABLE COLOURS



2042 - 41



2042 - 60



2042 - 74



SUITABLE FOR: Drapery & Blinds  


COMPOSITION: 73% Poly, 27% Cotton

WIDTH: 310CM (+/-5CM)

WEIGHT: 80GSM

VERTICAL DESIGN REPEAT: Nil

HORIZONTAL DESIGN REPEAT: Nil

WASHING INSTRUCTIONS: (Dry Clean Only)     

*Fabric With Lead Band

*Colour shades may tend to vary between different dye-lots & production batches

*Due to variations in computer screens, images presented are not 100% similar to actual fabrics

2042 - 06

AVAILABLE COLOURS



2042 - 54



2042 - 62



SUITABLE FOR: Drapery & Blinds 

COMPOSITION: 78% Poly, 22% Cotton

WIDTH: 300CM (+/-5CM)

WEIGHT: 178GSM

VERTICAL DESIGN REPEAT: 35cms

HORIZONTAL DESIGN REPEAT: 38cms

WASHING INSTRUCTIONS: (Dry Clean Only)     

*Fabric With Lead Band

*Colour shades may tend to vary between different dye-lots & production batches

*Due to variations in computer screens, images presented are not 100% similar to actual fabrics

2042 - 07

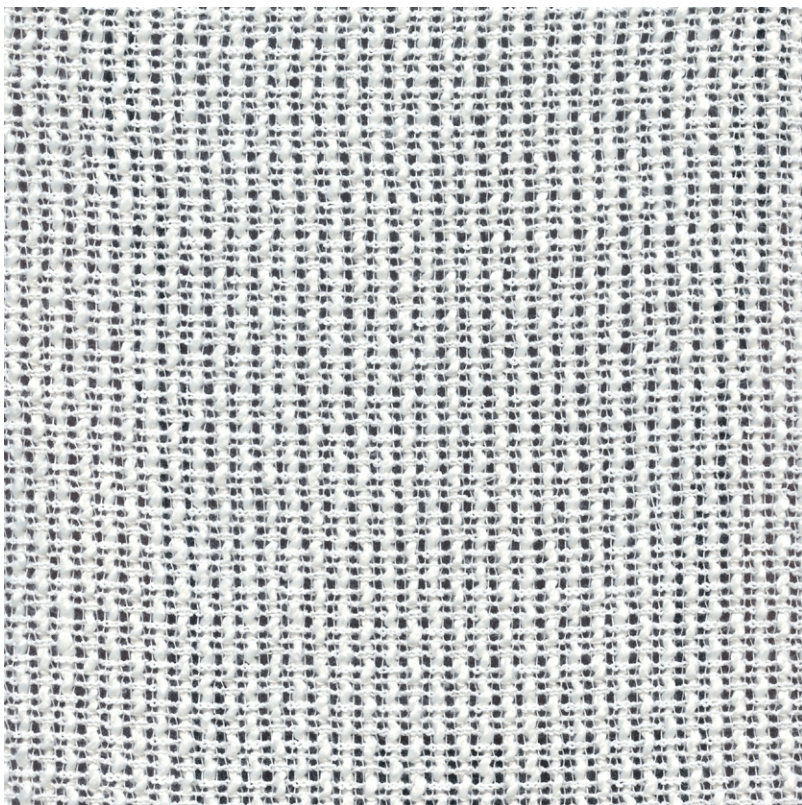
AVAILABLE COLOURS



2042 - 33



2042 - 48



2042 - 08

SUITABLE FOR: Drapery & Blinds 

COMPOSITION: Polyester Rayon Natural Fibre

WIDTH: 310CM (+/-5CM)

WEIGHT: 310GSM

VERTICAL DESIGN REPEAT: Nil

HORIZONTAL DESIGN REPEAT: Nil

WASHING INSTRUCTIONS: (Dry Clean Only)     ®

*Fabric With Lead Band

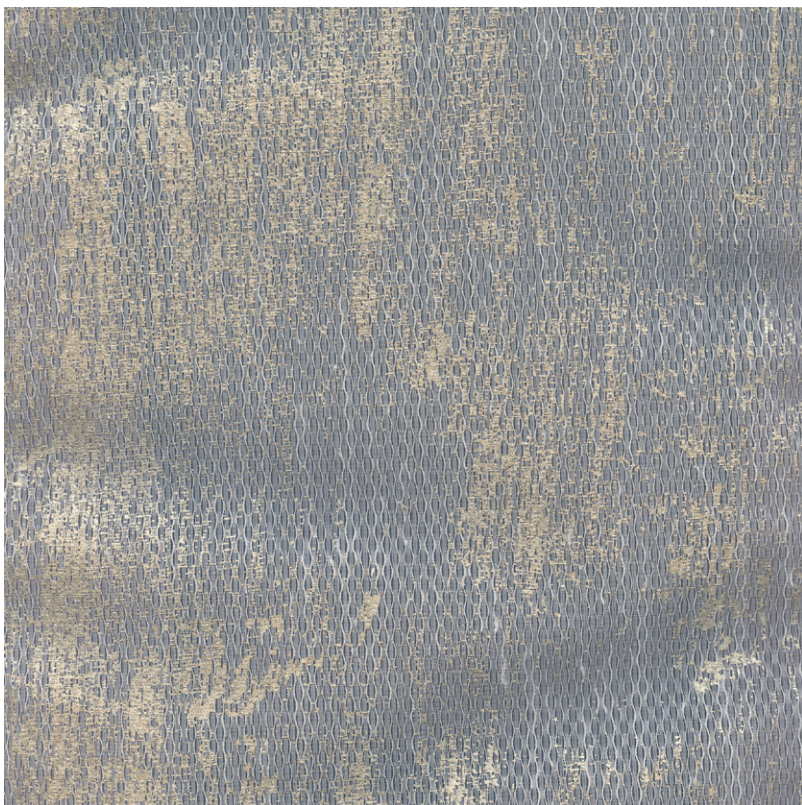
*Colour shades may tend to vary between different dye-lots & production batches

*Due to variations in computer screens, images presented are not 100% similar to actual fabrics

AVAILABLE COLOURS



2042 - 76



2042 - 09

SUITABLE FOR: Drapery & Blinds 

COMPOSITION: Polyester Rayon Natural Fibre

WIDTH: 310CM (+/-5CM)

WEIGHT: 310GSM

VERTICAL DESIGN REPEAT: Nil

HORIZONTAL DESIGN REPEAT: Nil

WASHING INSTRUCTIONS: (Dry Clean Only)     

*Fabric With Lead Band

*Colour shades may tend to vary between different dye-lots & production batches

*Due to variations in computer screens, images presented are not 100% similar to actual fabrics

AVAILABLE COLOURS



2042 - 52



SUITABLE FOR: Drapery & Blinds  

COMPOSITION: Polyester Rayon Natural Fibre

WIDTH: 310CM (+/-5CM)

WEIGHT: 100GSM

VERTICAL DESIGN REPEAT: Nil

HORIZONTAL DESIGN REPEAT: Nil

WASHING INSTRUCTIONS: (Dry Clean Only)     

*Fabric With Lead Band

*Colour shades may tend to vary between different dye-lots & production batches

*Due to variations in computer screens, images presented are not 100% similar to actual fabrics

2042 - 10

AVAILABLE COLOURS



2042 - 28



2042 - 38



SUITABLE FOR: Drapery & Blinds 

COMPOSITION: Polyester Rayon Natural Fibre

WIDTH: 310CM (+/-5CM)

WEIGHT: 45GSM

VERTICAL DESIGN REPEAT: 17CMS

HORIZONTAL DESIGN REPEAT: 17.5CMS

WASHING INSTRUCTIONS: (Dry Clean Only)     ®

*Fabric With Lead Band

*Colour shades may tend to vary between different dye-lots & production batches

*Due to variations in computer screens, images presented are not 100% similar to actual fabrics

2042 - 11

AVAILABLE COLOURS



2042 - 35



2042 - 65



SUITABLE FOR: Drapery & Blinds 

COMPOSITION: 85% Poly, 15% Cotton

WIDTH: 295CM (+/-5CM)

WEIGHT: 156GSM

VERTICAL DESIGN REPEAT: 34.5CMS

HORIZONTAL DESIGN REPEAT: 12.2CMS

WASHING INSTRUCTIONS: (Dry Clean Only)     

*Fabric With Lead Band

*Colour shades may tend to vary between different dye-lots & production batches

*Due to variations in computer screens, images presented are not 100% similar to actual fabrics

2042 - 12

AVAILABLE COLOURS



2042 - 31



2042 - 68



SUITABLE FOR: Drapery & Blinds  

COMPOSITION: 83% Poly, 17% Cotton

WIDTH: 300CM (+/-5CM)

WEIGHT: 147GSM

VERTICAL DESIGN REPEAT: Nil

HORIZONTAL DESIGN REPEAT: Nil

WASHING INSTRUCTIONS: (Dry Clean Only)     

*Fabric With Lead Band

*Colour shades may tend to vary between different dye-lots & production batches

*Due to variations in computer screens, images presented are not 100% similar to actual fabrics

2042 - 13

AVAILABLE COLOURS



2042 - 72



2042 - 14

SUITABLE FOR: Drapery & Blinds  

COMPOSITION: 70% Poly, 30% Cotton

WIDTH: 295CM (+/-5CM)

WEIGHT: 156GSM

VERTICAL DESIGN REPEAT: 4.3CMS

HORIZONTAL DESIGN REPEAT: 4.3CMS

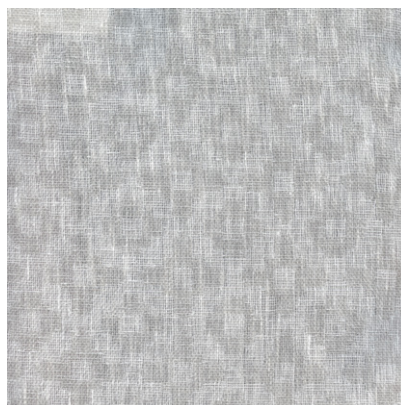
WASHING INSTRUCTIONS: (Dry Clean Only)      ®

*Fabric With Lead Band

*Colour shades may tend to vary between different dye-lots & production batches

*Due to variations in computer screens, images presented are not 100% similar to actual fabrics

AVAILABLE COLOURS



2042 - 70



SUITABLE FOR: Drapery & Blinds  


COMPOSITION: 68% Poly, 32% Cotton

WIDTH: 310CM (+/-5CM)

WEIGHT: 140GSM

VERTICAL DESIGN REPEAT: Nil

HORIZONTAL DESIGN REPEAT: Nil

WASHING INSTRUCTIONS: (Dry Clean Only)      ®

*Fabric With Lead Band

*Colour shades may tend to vary between different dye-lots & production batches

*Due to variations in computer screens, images presented are not 100% similar to actual fabrics

2042 - 15

AVAILABLE COLOURS



2042 - 30



2042 - 44





SUITABLE FOR: Drapery & Blinds  


COMPOSITION: 69% Poly, 31% Cotton

WIDTH: 300CM (+/-5CM)

WEIGHT: 143GSM

VERTICAL DESIGN REPEAT: Nil

HORIZONTAL DESIGN REPEAT: Nil

WASHING INSTRUCTIONS: (Dry Clean Only)      

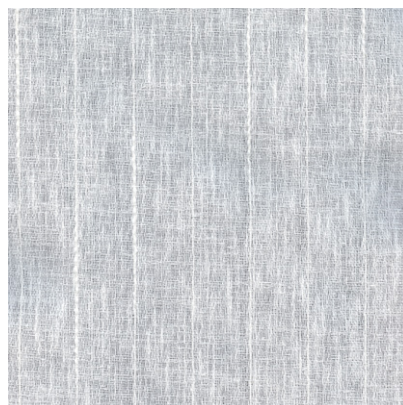
*Fabric With Lead Band

*Colour shades may tend to vary between different dye-lots & production batches

*Due to variations in computer screens, images presented are not 100% similar to actual fabrics

2042 - 16

AVAILABLE COLOURS



2042 - 32



SUITABLE FOR: Drapery & Blinds  


COMPOSITION: 70% Poly, 30% Cotton

WIDTH: 295CM (+/-5CM)

WEIGHT: 156GSM

VERTICAL DESIGN REPEAT: 34.5CMS

HORIZONTAL DESIGN REPEAT: 41CMS

WASHING INSTRUCTIONS: (Dry Clean Only)     

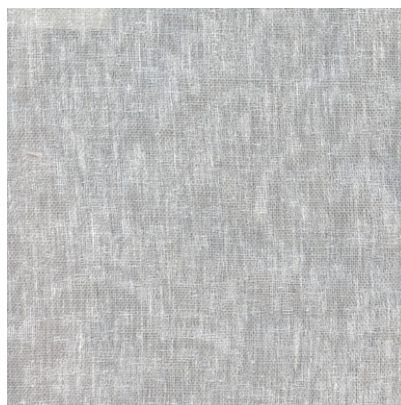
*Fabric With Lead Band

*Colour shades may tend to vary between different dye-lots & production batches

*Due to variations in computer screens, images presented are not 100% similar to actual fabrics

2042 - 17

AVAILABLE COLOURS



2042 - 71



SUITABLE FOR: Drapery & Blinds  

COMPOSITION: Polyester Rayon Natural Fibre

WIDTH: 310CM (+/-5CM)

WEIGHT: 155GSM

VERTICAL DESIGN REPEAT: Nil

HORIZONTAL DESIGN REPEAT: Nil

WASHING INSTRUCTIONS: (Dry Clean Only)      

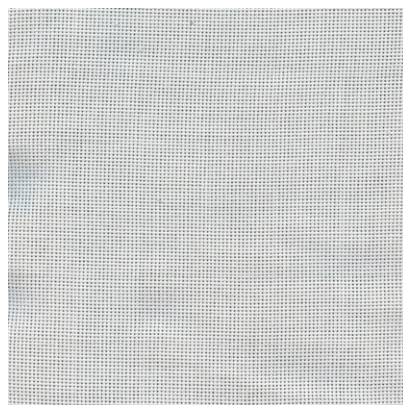
*Fabric With Lead Band

*Colour shades may tend to vary between different dye-lots & production batches

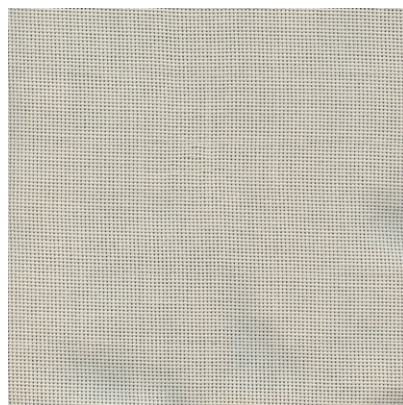
*Due to variations in computer screens, images presented are not 100% similar to actual fabrics

2042 - 18

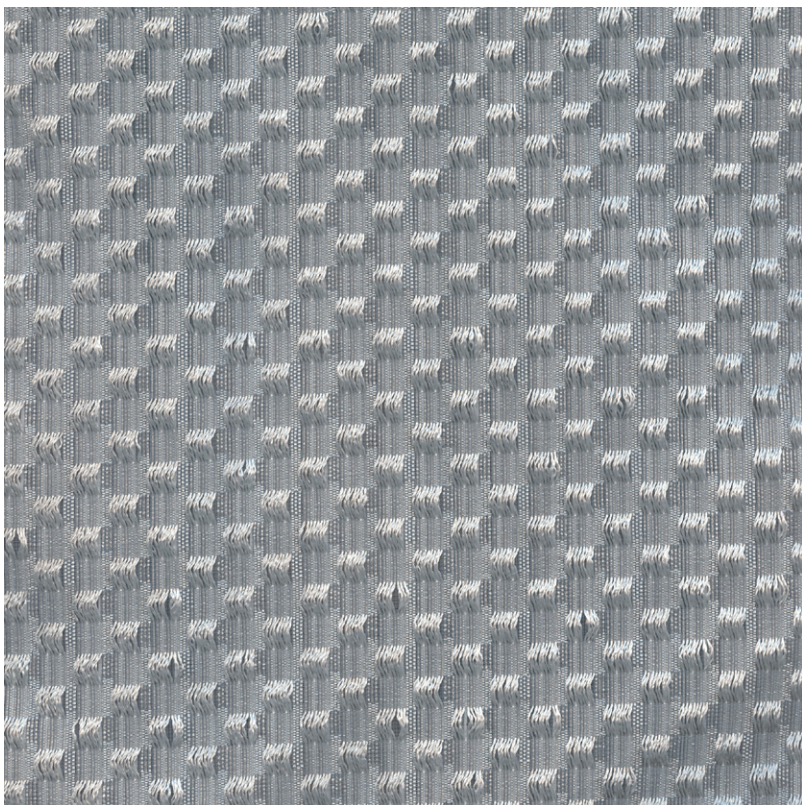
AVAILABLE COLOURS



2042 - 37



2042 - 53



SUITABLE FOR: Drapery & Blinds 


COMPOSITION: Polyester Rayon Natural Fibre

WIDTH: 310CM (+/-5CM)

WEIGHT: 80GSM

VERTICAL DESIGN REPEAT: 1.4CMS

HORIZONTAL DESIGN REPEAT: 1.7CMS

WASHING INSTRUCTIONS: (Dry Clean Only)     

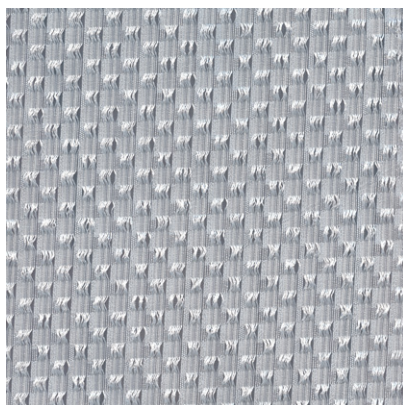
*Fabric With Lead Band

*Colour shades may tend to vary between different dye-lots & production batches

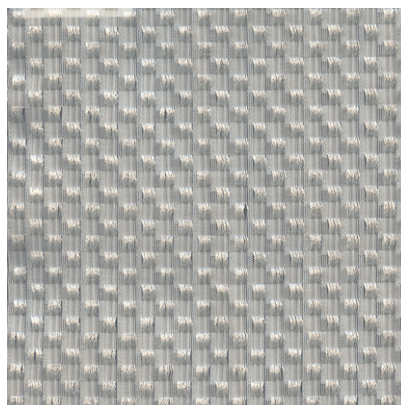
*Due to variations in computer screens, images presented are not 100% similar to actual fabrics

2042 - 19

AVAILABLE COLOURS



2042 - 34



2042 - 56



2042 - 59



SUITABLE FOR: Drapery & Blinds 

COMPOSITION: Polyester Rayon Natural Fibre

WIDTH: 310CM (+/-5CM)

WEIGHT: 65GSM

VERTICAL DESIGN REPEAT: 35.6CMS

HORIZONTAL DESIGN REPEAT: 17CMS

WASHING INSTRUCTIONS: (Dry Clean Only)     

*Fabric With Lead Band

*Colour shades may tend to vary between different dye-lots & production batches

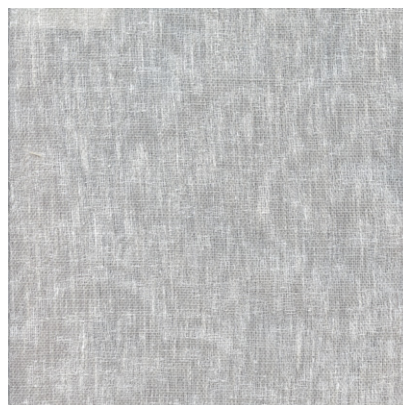
*Due to variations in computer screens, images presented are not 100% similar to actual fabrics

2042 - 20

AVAILABLE COLOURS



2042 - 36



2042 - 42



SUITABLE FOR: Drapery & Blinds 

COMPOSITION: Polyester Rayon Natural Fibre

WIDTH: 310CM (+/-5CM)

WEIGHT: 100GSM

VERTICAL DESIGN REPEAT: Nil

HORIZONTAL DESIGN REPEAT: Nil

WASHING INSTRUCTIONS: (Dry Clean Only)     ®

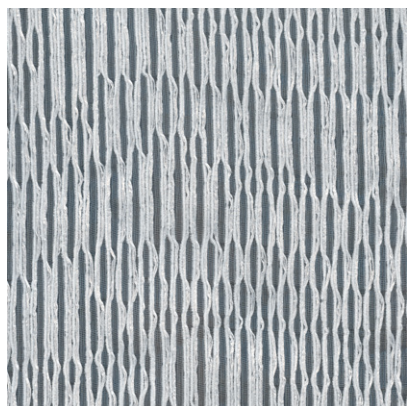
*Fabric With Lead Band

*Colour shades may tend to vary between different dye-lots & production batches

*Due to variations in computer screens, images presented are not 100% similar to actual fabrics

2042 - 21

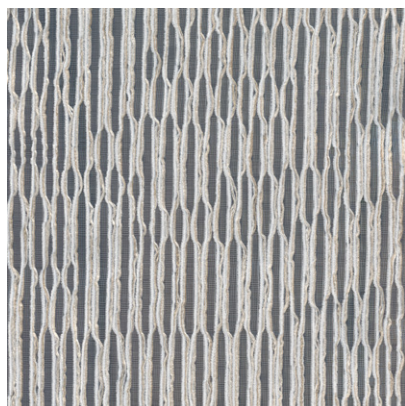
AVAILABLE COLOURS



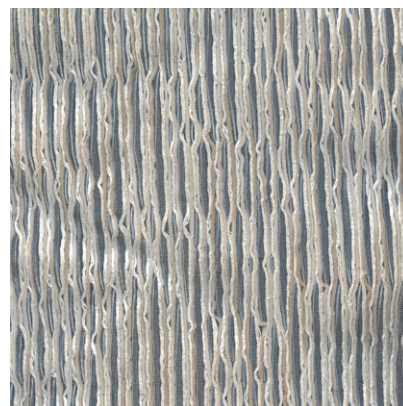
2042 - 27



2042 - 46



2042 - 51



2042 - 58



2042 - 63



SUITABLE FOR: Drapery & Blinds  

COMPOSITION: 78% Poly, 22% Cotton

WIDTH: 310CM (+/-5CM)

WEIGHT: 90GSM

VERTICAL DESIGN REPEAT: Nil

HORIZONTAL DESIGN REPEAT: Nil

WASHING INSTRUCTIONS: (Dry Clean Only)      

*Fabric With Lead Band

*Colour shades may tend to vary between different dye-lots & production batches

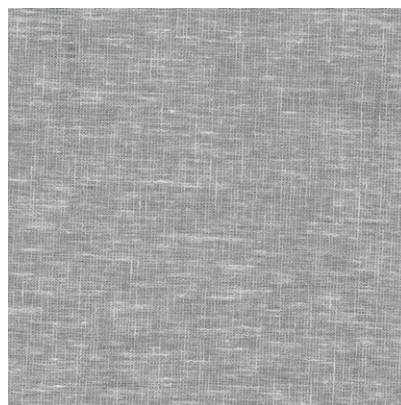
*Due to variations in computer screens, images presented are not 100% similar to actual fabrics

2042 - 22

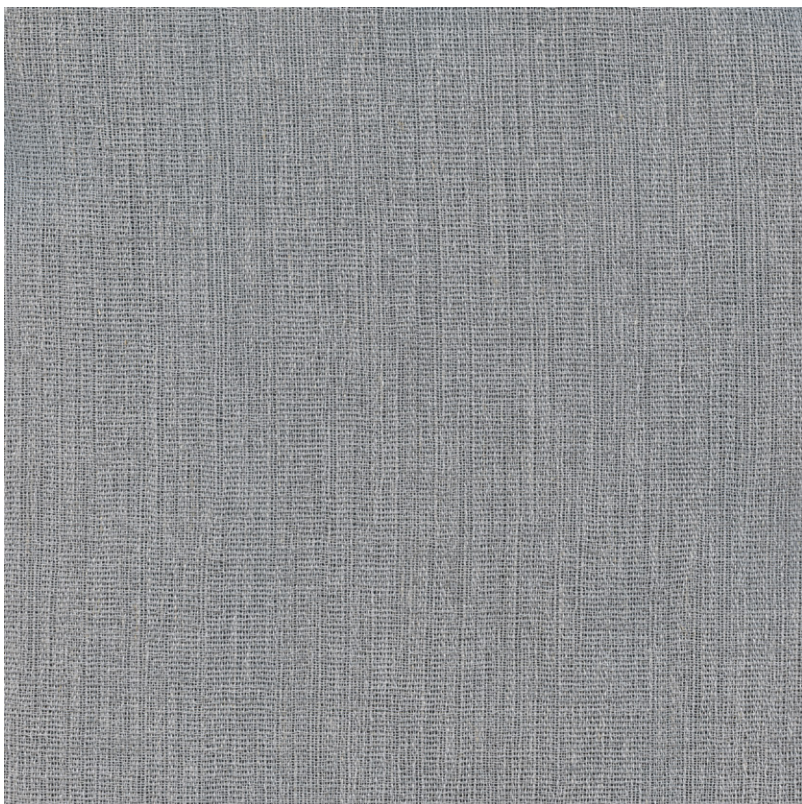
AVAILABLE COLOURS



2042 - 40



2042 - 49



SUITABLE FOR: Drapery & Blinds  

COMPOSITION: 87% Poly, 13% Linen

WIDTH: 310CM (+/-5CM)

WEIGHT: 125GSM

VERTICAL DESIGN REPEAT: Nil

HORIZONTAL DESIGN REPEAT: Nil

WASHING INSTRUCTIONS: (Dry Clean Only)      ®

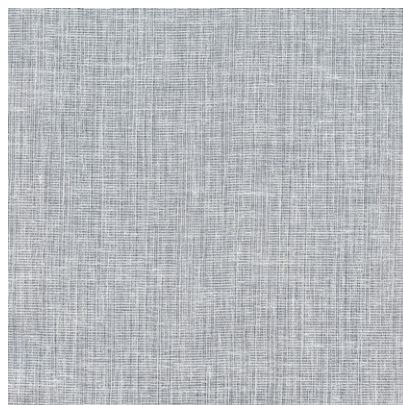
*Fabric With Lead Band

*Colour shades may tend to vary between different dye-lots & production batches

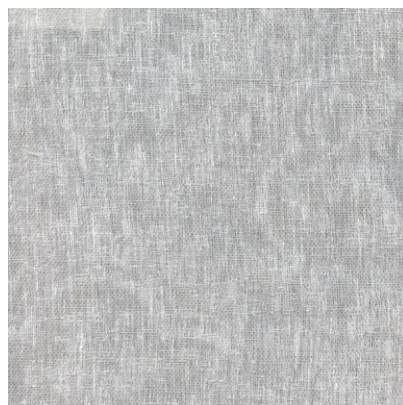
*Due to variations in computer screens, images presented are not 100% similar to actual fabrics

2042 - 23

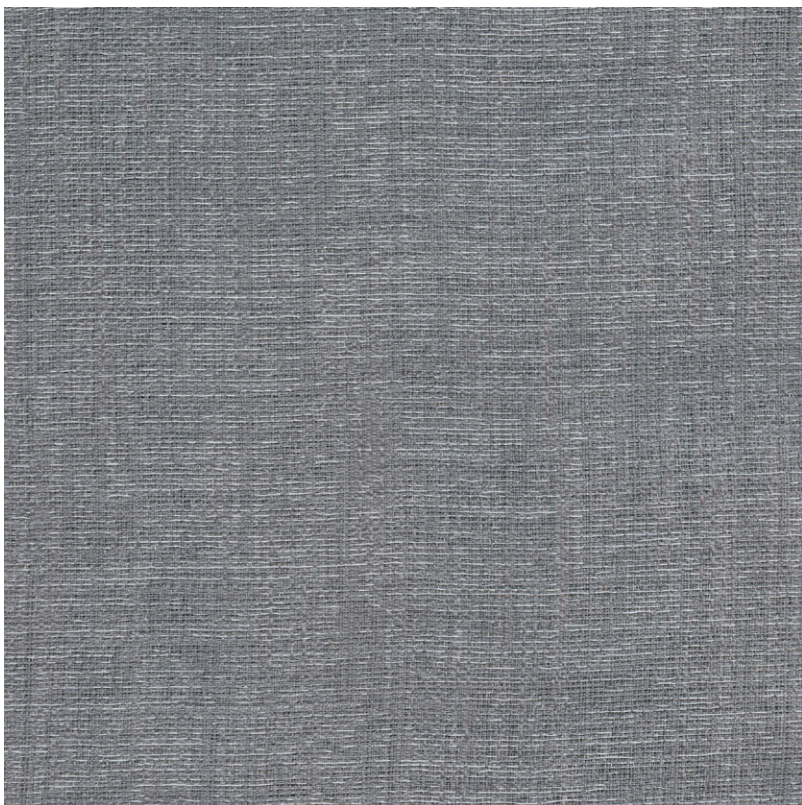
AVAILABLE COLOURS



2042 - 45



2042 - 57



SUITABLE FOR: Drapery & Blinds  

COMPOSITION: Polyester Rayon Natural Fibre

WIDTH: 310CM (+/-5CM)

WEIGHT: 95GSM

VERTICAL DESIGN REPEAT: Nil

HORIZONTAL DESIGN REPEAT: Nil

WASHING INSTRUCTIONS: (Dry Clean Only)      

*Fabric With Lead Band

*Colour shades may tend to vary between different dye-lots & production batches

*Due to variations in computer screens, images presented are not 100% similar to actual fabrics

2042 - 24

AVAILABLE COLOURS



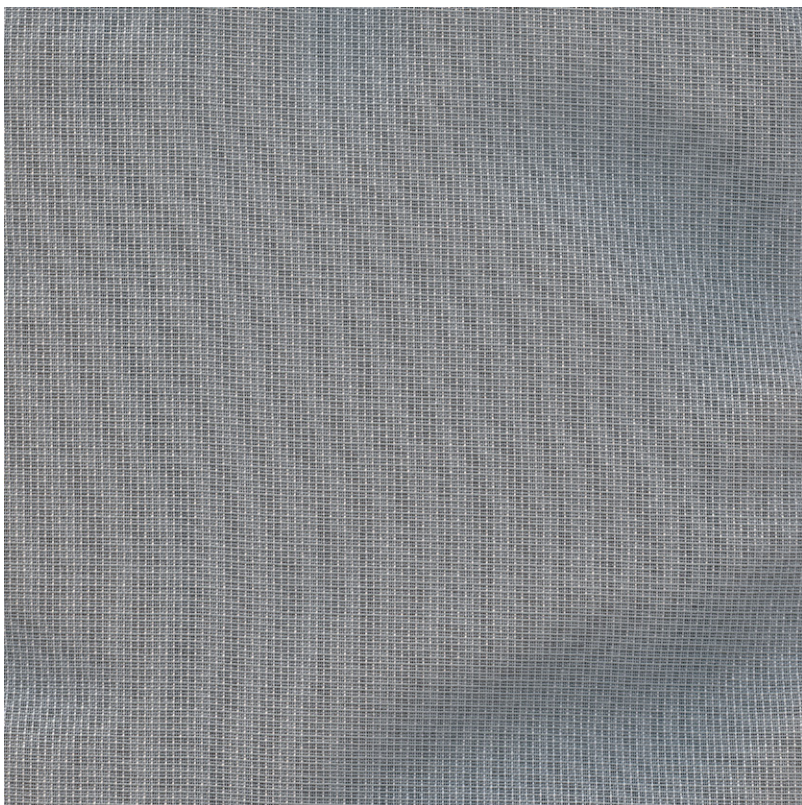
2042 - 29



2042 - 43



2042 - 75



SUITABLE FOR: Drapery & Blinds  

COMPOSITION: Polyester Rayon Natural Fibre

WIDTH: 310CM (+/-5CM)

WEIGHT: 80GSM

VERTICAL DESIGN REPEAT: Nil

HORIZONTAL DESIGN REPEAT: Nil

WASHING INSTRUCTIONS: (Dry Clean Only)      

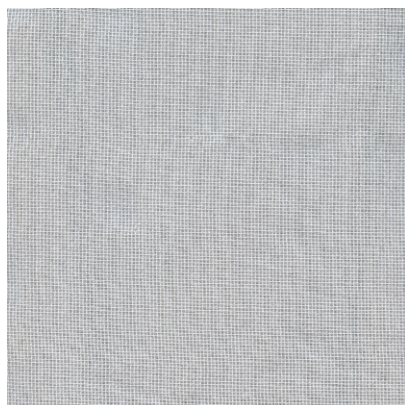
*Fabric With Lead Band

*Colour shades may tend to vary between different dye-lots & production batches

*Due to variations in computer screens, images presented are not 100% similar to actual fabrics

2042 - 25

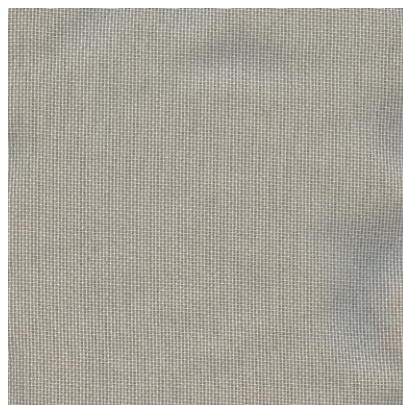
AVAILABLE COLOURS



2042 - 39



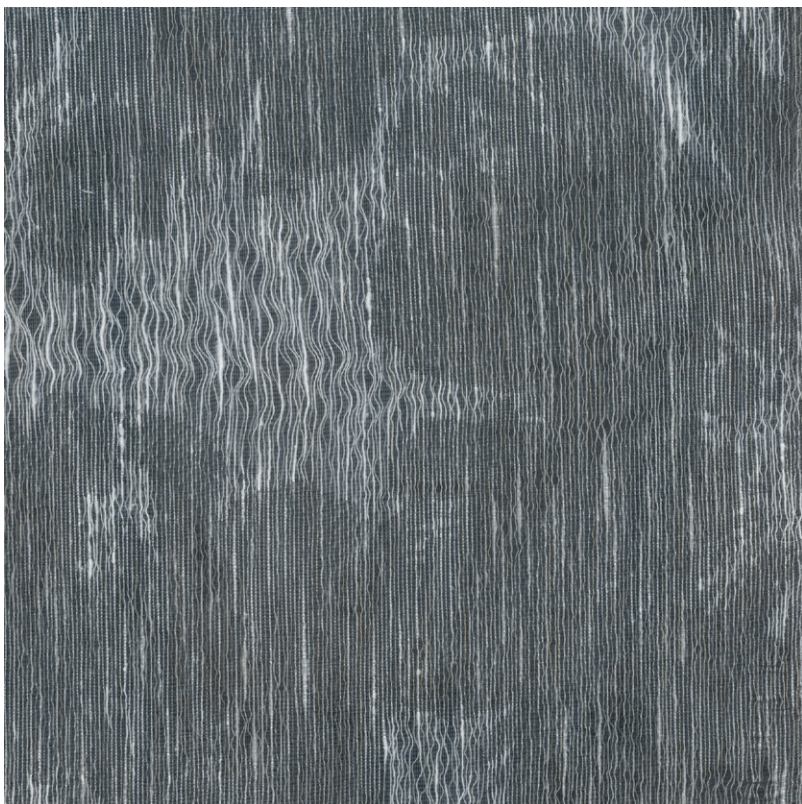
2042 - 50



2042 - 61



2042 - 73



2042 - 26

SUITABLE FOR: Drapery & Blinds 

COMPOSITION: 86% Poly, 14% Cotton

WIDTH: 295CM (+/-5CM)

WEIGHT: 57GSM

VERTICAL DESIGN REPEAT: 34.5CMS

HORIZONTAL DESIGN REPEAT: 35.5CMS

WASHING INSTRUCTIONS: (Dry Clean Only)     

*Fabric With Lead Band

*Colour shades may tend to vary between different dye-lots & production batches

*Due to variations in computer screens, images presented are not 100% similar to actual fabrics

AVAILABLE COLOURS



2042 - 64



ULTRA FABRICS

EST. 1990

ULTRA FURNISHING FABRICS FZCO

Unit 262. Dubai Textile City
Al Warsan 1, Dubai, UAE

Follow our socials
ultrafabrics.ae



www.ultrafabrics.ae