



NOVA

CAT NO. 498

Decorate commercial and residential interiors with fire retardant sheer curtains that grant an interior designer's aesthetic. Nova represents fire retardant sheer curtain fabrics in beguiling shades of pearl, sand, and ash, made of yarns inherently treated for fire repellence. This is for project designers & home owners who shouldn't have to decide between sheer beauty and protection.



FIRE RETARDANT
M1 STANDARD

TEST SONUÇLARI

The Results of The Tests

Test Adı/ Test Name: Flame Retardancy

İlgili Standart/ Relevant standard: NF P 92 – 504; 1995

Kondisyon Şartları/ Conditioning parameters: 20±2°C, 65±4% RH

Test Parametreleri/ Test parameters: Ignition Gas: Propane, Flame Application Time: 5 seconds

Ambient Conditions: 21°C



Sample ID	FR70006.08
Classification for NF P 92 - 504	M1

(Product Classification standard NF P92 – 507)

Sample ID	FR70006.08					
	Weft			Warp		
	1	2	3	1	2	3
#1	0s	0s	0s	0s	0s	0s
#2	0s	0s	0s	0s	0s	0s
#3	0s	0s	0s	0s	0s	0s
#4	0s	0s	0s	0s	0s	0s
#5	0s	0s	0s	0s	0s	0s
#6	0s	0s	0s	0s	0s	0s
#7	0s	0s	0s	0s	0s	0s
#8	-	-	-	-	-	-
#9	-	-	-	-	-	-
#10	-	-	-	-	-	-

...s: Flame Remanence Time

*: Non Flammable Sparks

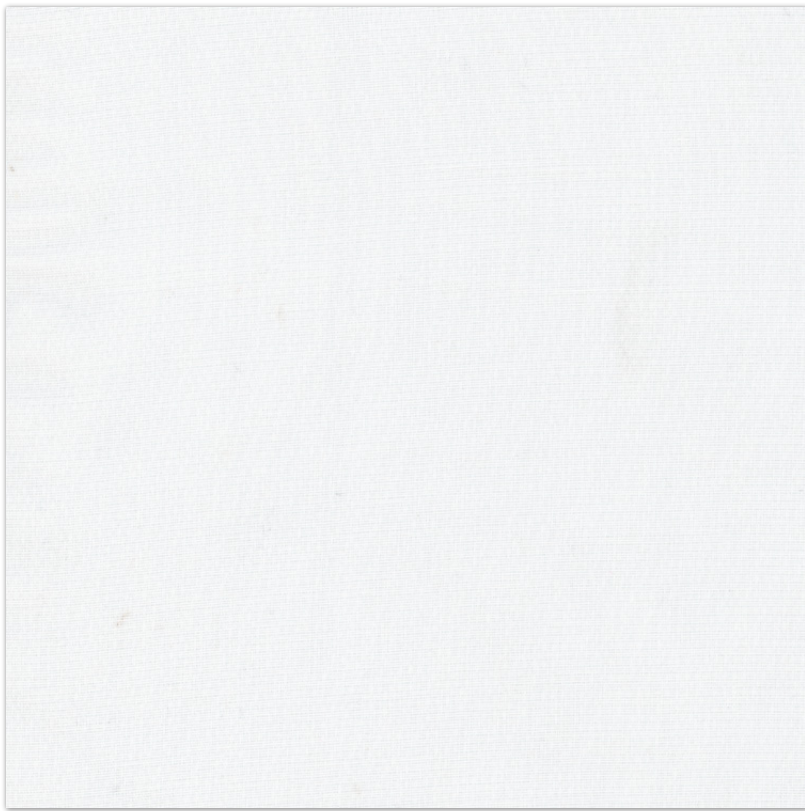
+: Flammable Sparks

Equipment (Test Standardı)	Evaluation (Gelişim)	Classification (Sınıflandırma)		
	Flame Remanence (Alev Süresi)	≤2s	>2s – <5s	≥5s
NF P 92 – 504 (Flame Spread)	No sparks (Damlama Yok)	M1	M2	M3
	Nonflammable sparks (Alevsiz Damlama)	M1	M2	M3
	Flammable sparks (Alevli Damlama)	-	M3	M4

Testi Yapan/Yapanlar

Test Technician(s)

Sezer TEMEL



SUITABLE FOR: Drapery & Blinds 

COMPOSITION: Polyester Rayon Natural Fibre

WIDTH: 320CM (+/- 5CM)

WEIGHT: 22.6GSM

VERTICAL DESIGN REPEAT: Nil

HORIZONTAL DESIGN REPEAT: Nil

WASHING INSTRUCTIONS: (Dry Clean Only) 

*Fire Retardant Sheer / M1 Standard

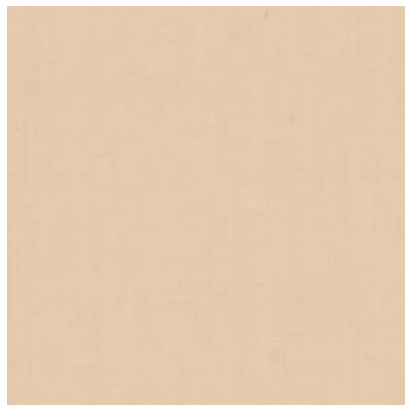
*Fabric With Lead Band

*Colour shades may tend to vary between different dye-lots & production batches

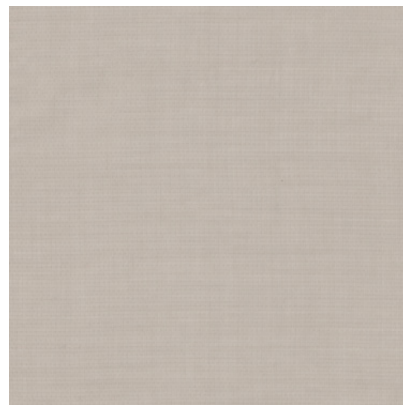
*Due to variations in computer screens, images presented are not 100% similar to actual fabrics

498 - 01

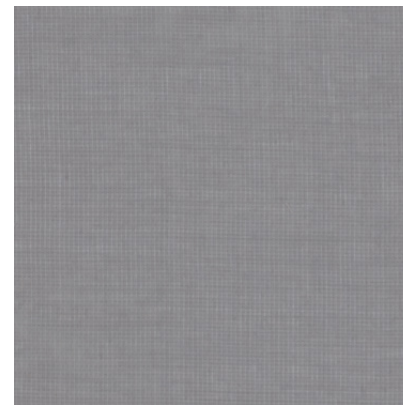
AVAILABLE COLOURS



498 - 02



498 - 03



498 - 04



SUITABLE FOR: Drapery & Blinds 

COMPOSITION: Polyester Rayon Natural Fibre

WIDTH: 320CM (+/- 5CM)

WEIGHT: 19.4GSM

VERTICAL DESIGN REPEAT: Nil

HORIZONTAL DESIGN REPEAT: Nil

WASHING INSTRUCTIONS: (Dry Clean Only)     

*Fire Retardant Sheer / M1 Standard

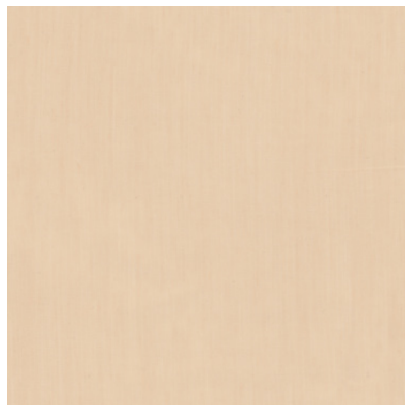
*Fabric With Lead Band

*Colour shades may tend to vary between different dye-lots & production batches

*Due to variations in computer screens, images presented are not 100% similar to actual fabrics

498 - 05

AVAILABLE COLOURS



498 - 06



498 - 07



498 - 08



SUITABLE FOR: Drapery & Blinds 

COMPOSITION: Polyester Rayon Natural Fibre

WIDTH: 320CM (+/- 5CM)

WEIGHT: 15.9GSM

VERTICAL DESIGN REPEAT: Nil

HORIZONTAL DESIGN REPEAT: Nil

WASHING INSTRUCTIONS: (Dry Clean Only)     

*Fire Retardant Sheer / M1 Standard

*Fabric With Lead Band

*Colour shades may tend to vary between different dye-lots & production batches

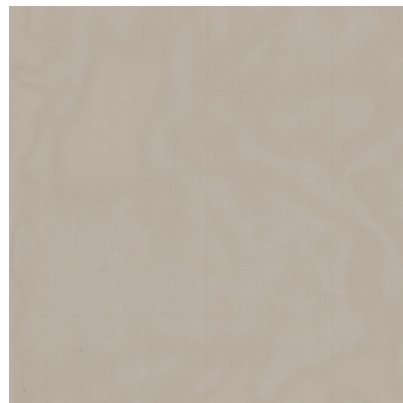
*Due to variations in computer screens, images presented are not 100% similar to actual fabrics

498 - 09

AVAILABLE COLOURS



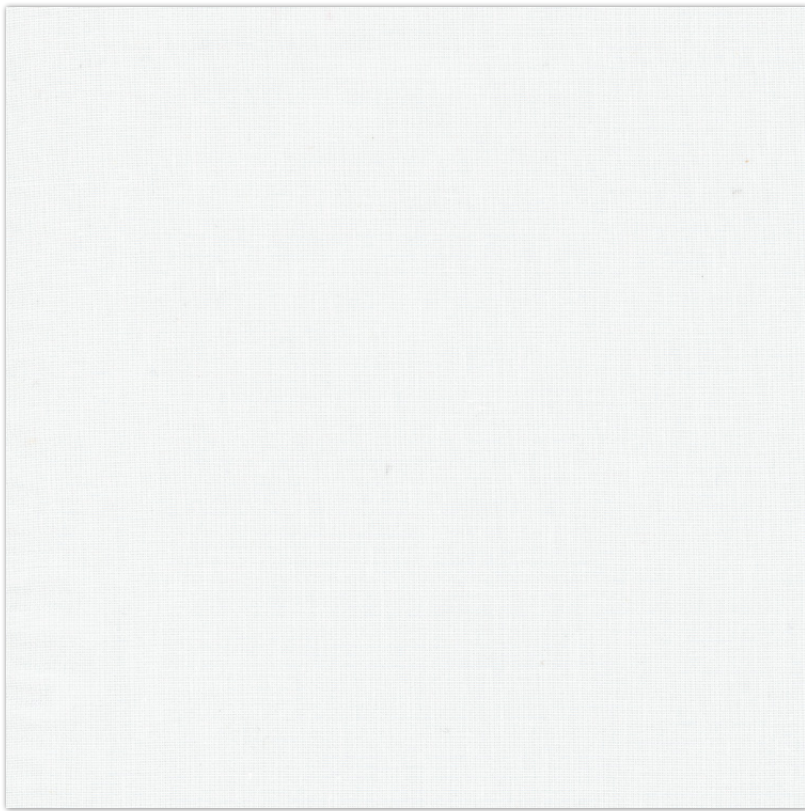
498 - 10



498 - 11



498 - 12



SUITABLE FOR: Drapery & Blinds 

COMPOSITION: Polyester Rayon Natural Fibre

WIDTH: 320CM (+/- 5CM)

WEIGHT: 22GSM

VERTICAL DESIGN REPEAT: Nil

HORIZONTAL DESIGN REPEAT: Nil

WASHING INSTRUCTIONS: (Dry Clean Only)     

*Fire Retardant Sheer / M1 Standard

*Fabric With Lead Band

*Colour shades may tend to vary between different dye-lots & production batches

*Due to variations in computer screens, images presented are not 100% similar to actual fabrics

498 - 13

AVAILABLE COLOURS



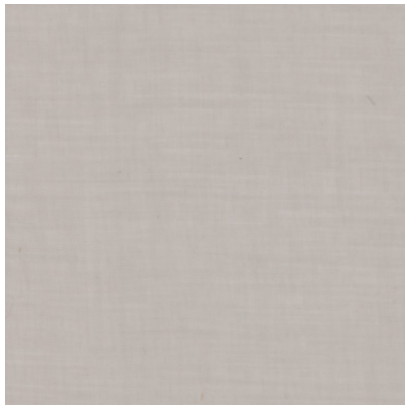
498 - 14



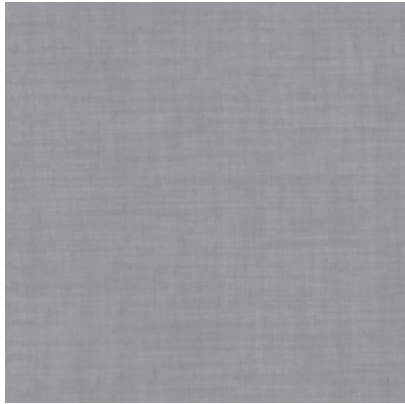
498 - 15



498 - 16



498 - 17

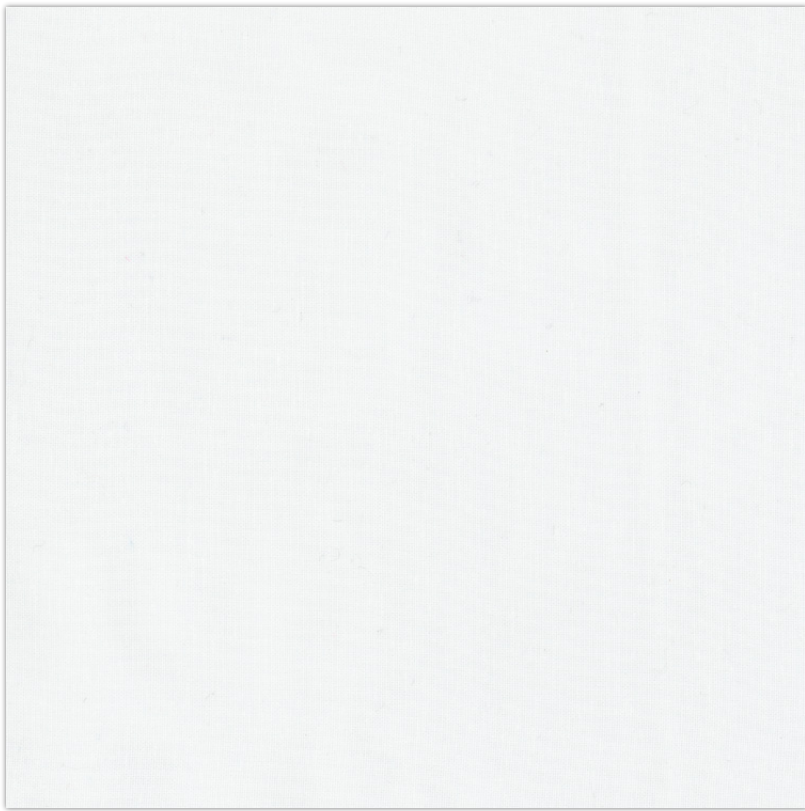


498 - 18



498 - 19





SUITABLE FOR: Drapery & Blinds 

COMPOSITION: Polyester Rayon Natural Fibre

WIDTH: 320CM (+/- 5CM)

WEIGHT: 19GSM

VERTICAL DESIGN REPEAT: Nil

HORIZONTAL DESIGN REPEAT: Nil

WASHING INSTRUCTIONS: (Dry Clean Only) 

*Fire Retardant Sheer / M1 Standard

*Fabric With Lead Band

*Colour shades may tend to vary between different dye-lots & production batches

*Due to variations in computer screens, images presented are not 100% similar to actual fabrics

498 - 20

AVAILABLE COLOURS



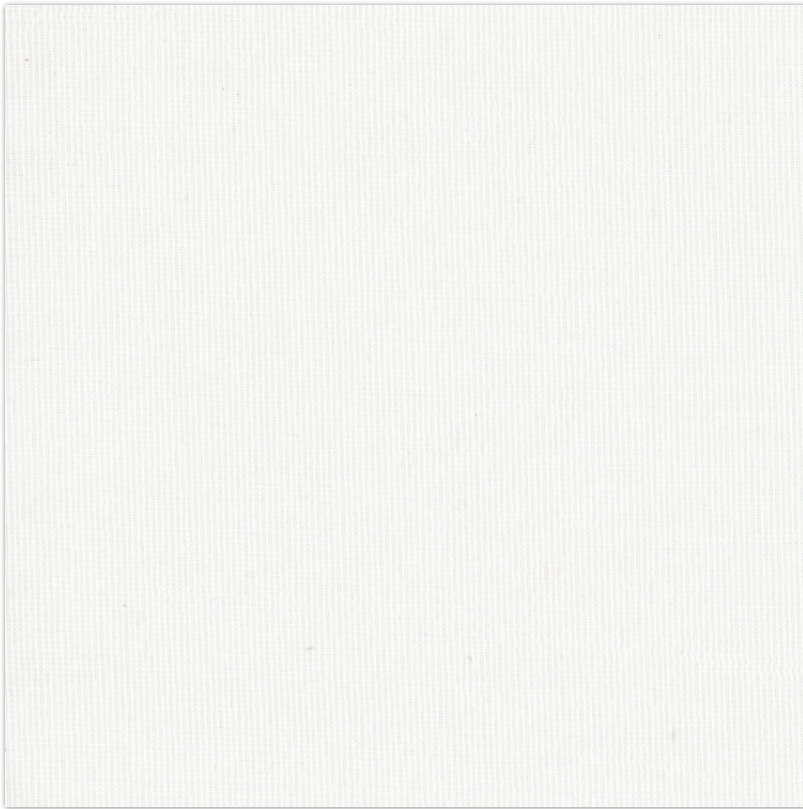
498 - 21



498 - 22



498 - 23



498 - 24

SUITABLE FOR: Drapery & Blinds 

COMPOSITION: Polyester Rayon Natural Fibre

WIDTH: 320CM (+/- 5CM)

WEIGHT: 26.2GSM

VERTICAL DESIGN REPEAT: Nil

HORIZONTAL DESIGN REPEAT: Nil

WASHING INSTRUCTIONS: (Dry Clean Only)      

*Fire Retardant Sheer / M1 Standard

*Fabric With Lead Band

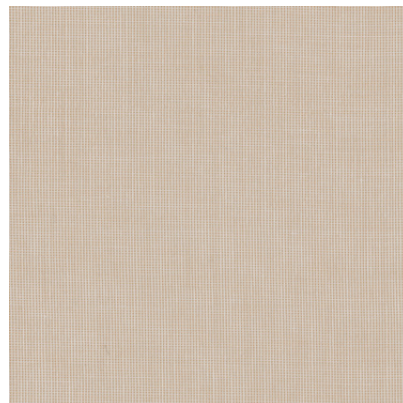
*Colour shades may tend to vary between different dye-lots & production batches

*Due to variations in computer screens, images presented are not 100% similar to actual fabrics

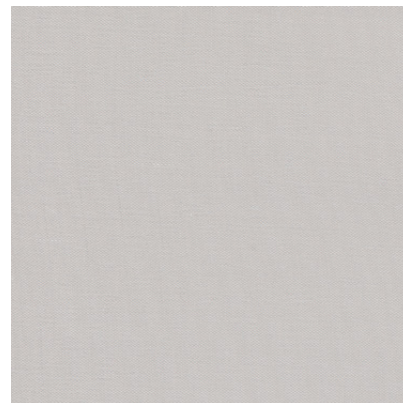
AVAILABLE COLOURS



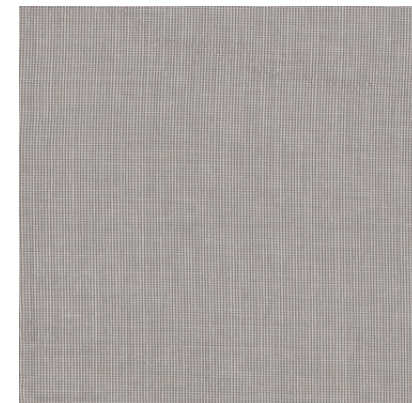
498 - 25



498 - 26



498 - 27



498 - 28



SUITABLE FOR: Drapery & Blinds 

COMPOSITION: Polyester Rayon Natural Fibre

WIDTH: 320CM (+/- 5CM)

WEIGHT: 16.8GSM

VERTICAL DESIGN REPEAT: Nil

HORIZONTAL DESIGN REPEAT: Nil

WASHING INSTRUCTIONS: (Dry Clean Only)     

*Fire Retardant Sheer / M1 Standard

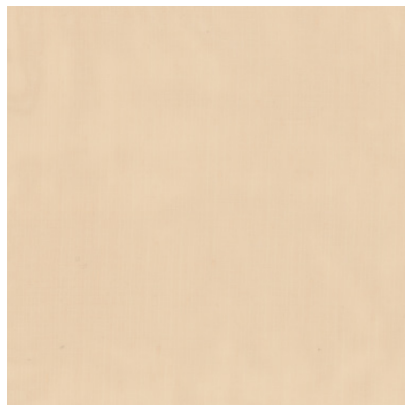
*Fabric With Lead Band

*Colour shades may tend to vary between different dye-lots & production batches

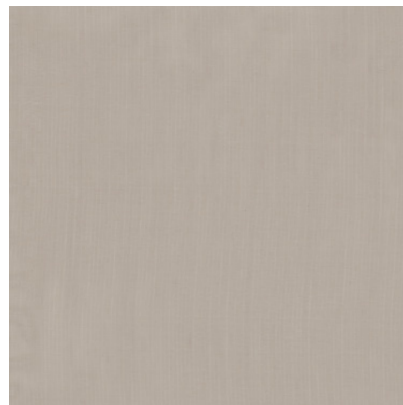
*Due to variations in computer screens, images presented are not 100% similar to actual fabrics

498 - 29

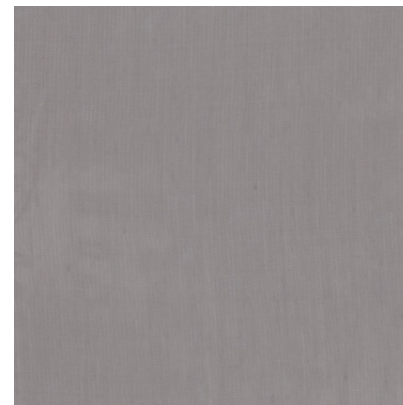
AVAILABLE COLOURS



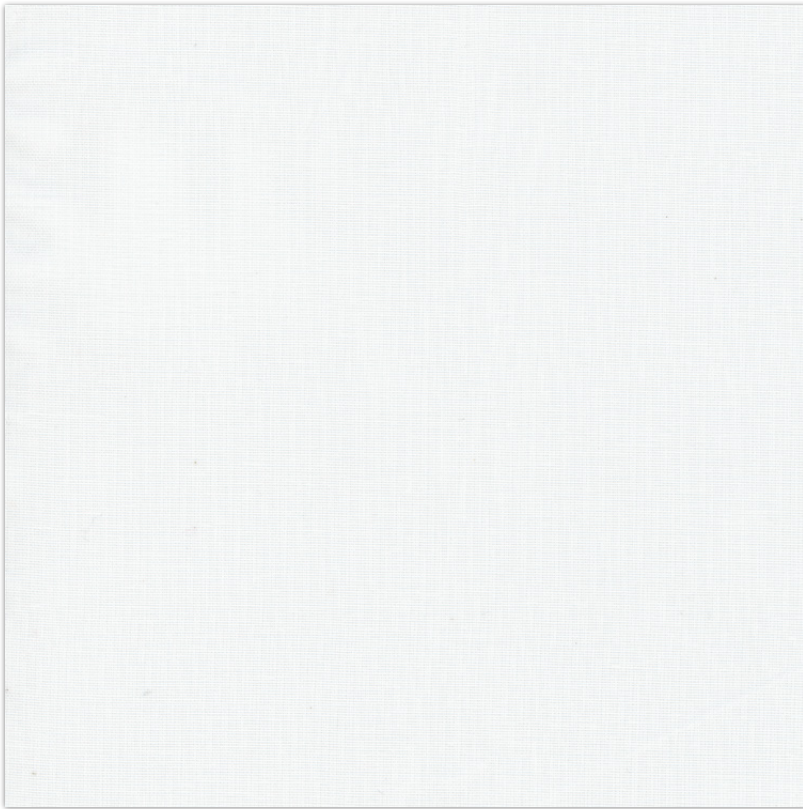
498 - 30



498 - 31



498 - 32



SUITABLE FOR: Drapery & Blinds 

COMPOSITION: Polyester Rayon Natural Fibre

WIDTH: 320CM (+/- 5CM)

WEIGHT: 18.8GSM

VERTICAL DESIGN REPEAT: Nil

HORIZONTAL DESIGN REPEAT: Nil

WASHING INSTRUCTIONS: (Dry Clean Only)     

*Fire Retardant Sheer / M1 Standard

*Fabric With Lead Band

*Colour shades may tend to vary between different dye-lots & production batches

*Due to variations in computer screens, images presented are not 100% similar to actual fabrics

498 - 33

AVAILABLE COLOURS



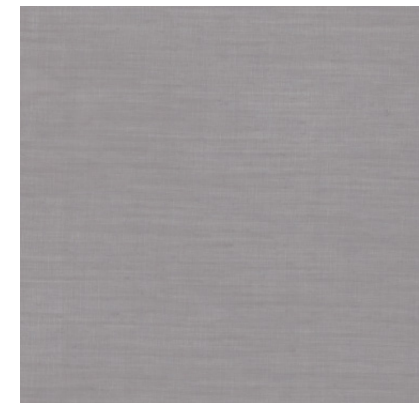
498 - 34



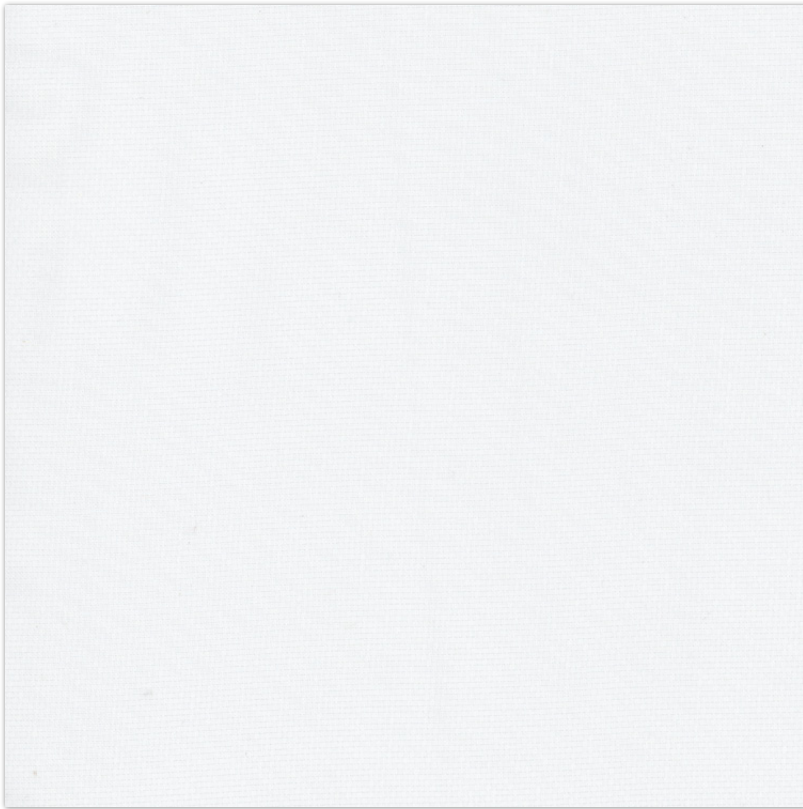
498 - 35



498 - 36



498 - 37



SUITABLE FOR: Drapery & Blinds 

COMPOSITION: Polyester Rayon Natural Fibre

WIDTH: 320CM (+/- 5CM)

WEIGHT: 19GSM

VERTICAL DESIGN REPEAT: Nil

HORIZONTAL DESIGN REPEAT: Nil

WASHING INSTRUCTIONS: (Dry Clean Only)     

*Fire Retardant Sheer / M1 Standard

*Fabric With Lead Band

*Colour shades may tend to vary between different dye-lots & production batches

*Due to variations in computer screens, images presented are not 100% similar to actual fabrics

498 - 38

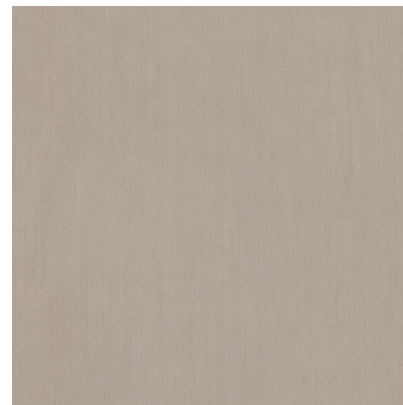
AVAILABLE COLOURS



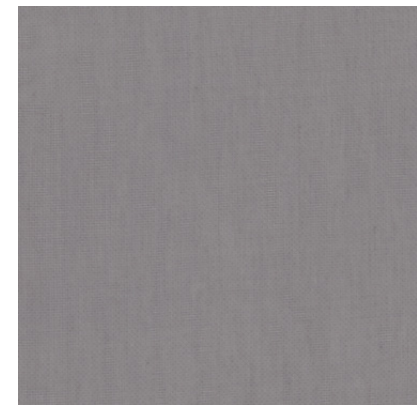
498 - 39



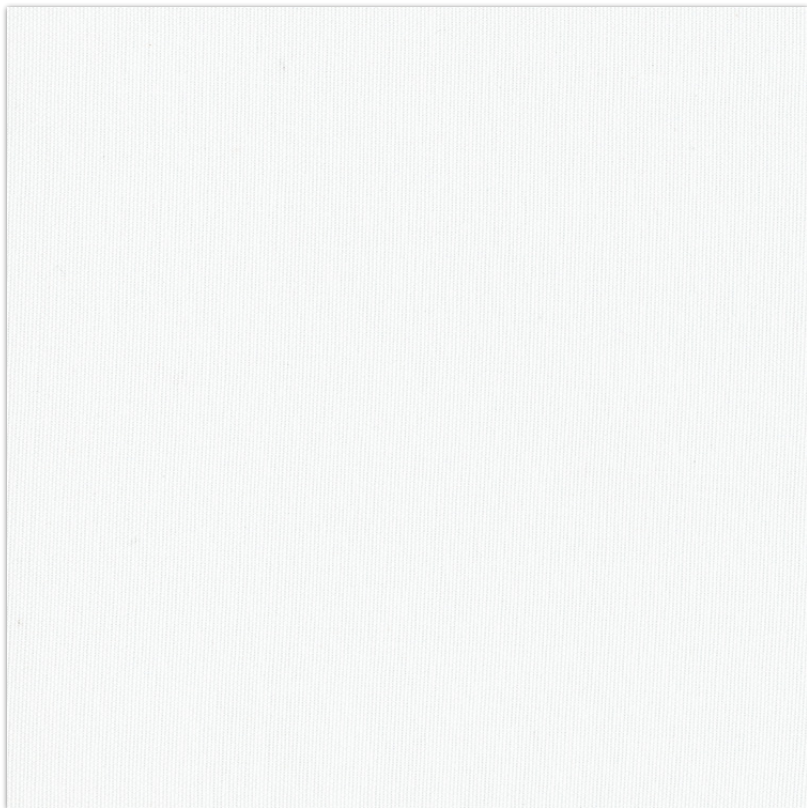
498 - 40



498 - 41



498 - 42



498 - 43

SUITABLE FOR: Drapery & Blinds 

COMPOSITION: Polyester Rayon Natural Fibre

WIDTH: 320CM (+/- 5CM)

WEIGHT: 27.8GSM

VERTICAL DESIGN REPEAT: Nil

HORIZONTAL DESIGN REPEAT: Nil

WASHING INSTRUCTIONS: (Dry Clean Only)     

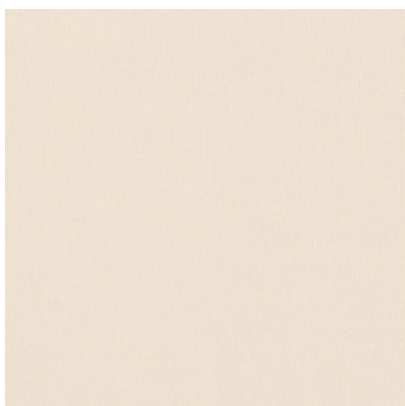
*Fire Retardant Sheer / M1 Standard

*Fabric With Lead Band

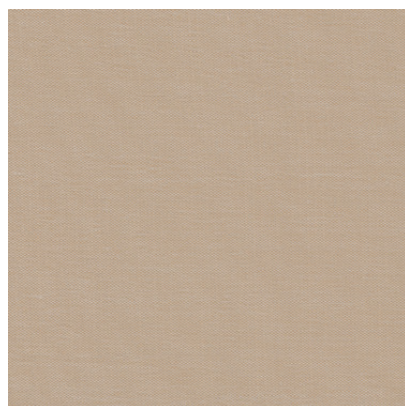
*Colour shades may tend to vary between different dye-lots & production batches

*Due to variations in computer screens, images presented are not 100% similar to actual fabrics

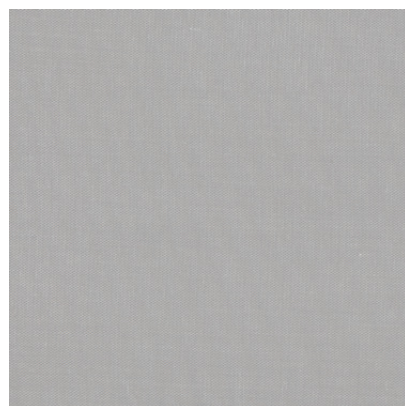
AVAILABLE COLOURS



498 - 44



498 - 45



498 - 46



498 - 47

U

ULTRA FABRICS

EST. 1990

ULTRA FURNISHING FABRICS FZCO

Unit 262. Dubai Textile City
Al Warsan 1, Dubai, UAE

Follow our socials
ultrafabrics.ae



www.ultrafabrics.ae