

WABI-SABI (THEMES VII)

CAT NO. 2039

Representing the delicate beauty held by objects that celebrate natural imperfection, Wabi-Sabi brings you foil-printed jacquards in muted tones. Here you'll find patterns of abstract geometry, garden leaf, and wood combs, dyed in a unique shade of kintsugi gold. These fabrics for curtains and cushions showcase a sophisticated aesthete that is timeless.



WABI-SABI
(THEMES VII)

U
ULTRA FABRICS
EST. 1990

CAT. NO. 2039



SUITABLE FOR: Drapery & Soft Upholstery  

COMPOSITION: Polyester Rayon Natural Fiber

WIDTH: 140CM (+/- 5CM)

WEIGHT: 205GSM

VERTICAL DESIGN REPEAT: Nil

HORIZONTAL DESIGN REPEAT: Nil

WASHING INSTRUCTIONS: (Dry Clean Only)     

*Colour shades may tend to vary between different dye-lots & production batches

*Due to variations in computer screens, images presented are not 100% similar to actual fabrics

*Other colours are available in book collections 2038 & 2040

2039 - 01

AVAILABLE COLOURS



2038 - 64



2039 - 61



SUITABLE FOR: Drapery & Soft Upholstery  

COMPOSITION: Polyester Rayon Natural Fiber

WIDTH: 140CM (+/- 5CM)

WEIGHT: 235GSM

VERTICAL DESIGN REPEAT: 11.9 CMS

HORIZONTAL DESIGN REPEAT: 11.8 CMS

WASHING INSTRUCTIONS: (Dry Clean Only)     

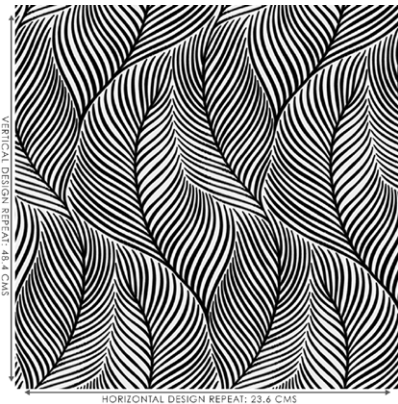
*Colour shades may tend to vary between different dye-lots & production batches

*Due to variations in computer screens, images presented are not 100% similar to actual fabrics

*Other colours are available in book collections 2038 & 2040

2039 - 02

AVAILABLE COLOURS



DESIGN



2038 - 52



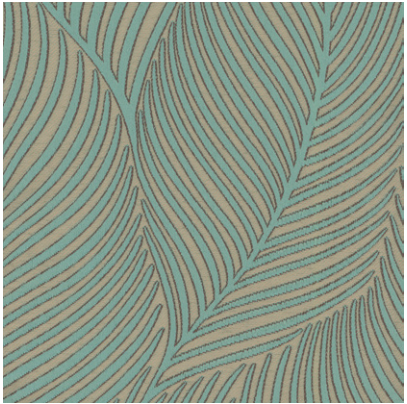
2039 - 82



2039 - 85



2040 - 13



2040 - 63



2040 - 70





SUITABLE FOR: Drapery & Soft Upholstery  

COMPOSITION: Polyester Rayon Natural Fiber

WIDTH: 140CM (+/- 5CM)

WEIGHT: 240GSM

VERTICAL DESIGN REPEAT: 6.9 CMS

HORIZONTAL DESIGN REPEAT: 4.8 CMS

WASHING INSTRUCTIONS: (Dry Clean Only)     

*Colour shades may tend to vary between different dye-lots & production batches

*Due to variations in computer screens, images presented are not 100% similar to actual fabrics

*Other colours are available in book collections 2038 & 2040

2039 - 03

AVAILABLE COLOURS



2038 - 46



2040 - 09



2040 - 30



2040 - 62



2040 - 67



SUITABLE FOR: Drapery & Soft Upholstery  

COMPOSITION: 72% Poly, 28% Cotton

WIDTH: 140CM (+/- 5CM)

WEIGHT: 210GSM

VERTICAL DESIGN REPEAT: 23.6 CMS

HORIZONTAL DESIGN REPEAT: 22.8 CMS

WASHING INSTRUCTIONS: (Dry Clean Only)     

*Colour shades may tend to vary between different dye-lots & production batches

*Due to variations in computer screens, images presented are not 100% similar to actual fabrics

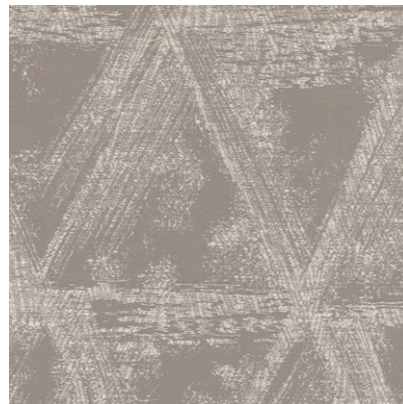
*Other colours are available in book collections 2038 & 2040

2039 - 04

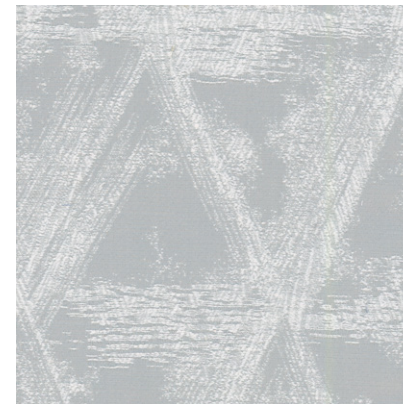
AVAILABLE COLOURS



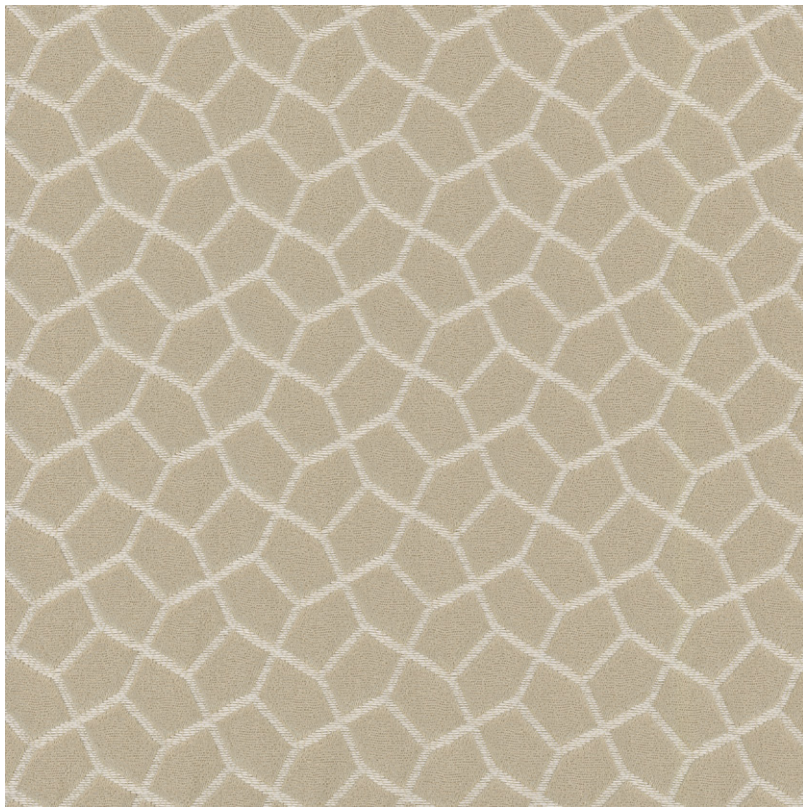
2039 - 11



2039 - 88



2040 - 53



SUITABLE FOR: Drapery & Soft Upholstery  

COMPOSITION: Polyester Rayon Natural Fiber

WIDTH: 140CM (+/- 5CM)

WEIGHT: 250GSM

VERTICAL DESIGN REPEAT: 3.2 CMS

HORIZONTAL DESIGN REPEAT: 3.0 CMS

WASHING INSTRUCTIONS: (Dry Clean Only)     

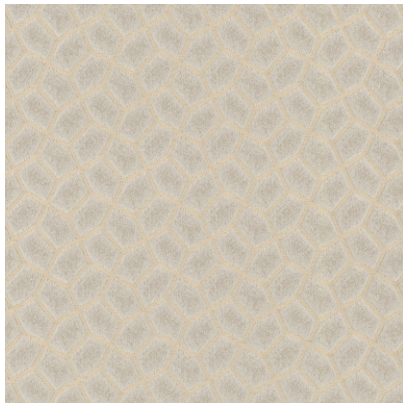
*Colour shades may tend to vary between different dye-lots & production batches

*Due to variations in computer screens, images presented are not 100% similar to actual fabrics

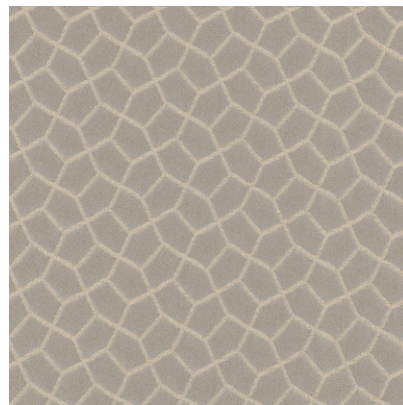
*Other colours are available in book collections 2038 & 2040

2039 - 05

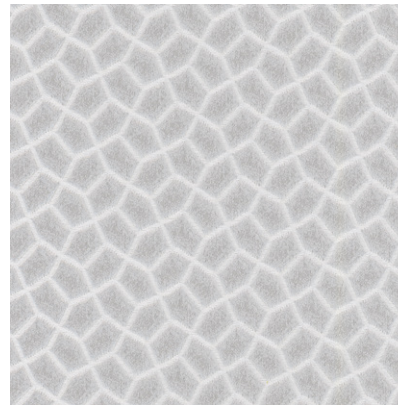
AVAILABLE COLOURS



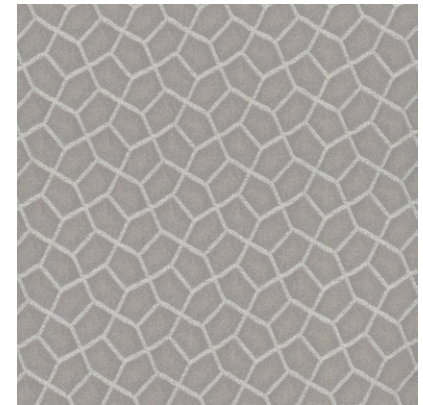
2038 - 82



2039 - 66



2040 - 10



2040 - 31



SUITABLE FOR: Drapery & Soft Upholstery  

COMPOSITION: Polyester Rayon Natural Fiber

WIDTH: 140CM (+/- 5CM)

WEIGHT: 240GSM

VERTICAL DESIGN REPEAT: Nil

HORIZONTAL DESIGN REPEAT: Nil

WASHING INSTRUCTIONS: (Dry Clean Only)      

*Colour shades may tend to vary between different dye-lots & production batches

*Due to variations in computer screens, images presented are not 100% similar to actual fabrics

*Other colours are available in book collections 2038 & 2040

2039 - 06

AVAILABLE COLOURS



2038 58



2039 - 51



2040 - 32



SUITABLE FOR: Drapery & Soft Upholstery  

COMPOSITION: Polyester Rayon Natural Fiber

WIDTH: 140CM (+/- 5CM)

WEIGHT: 225GSM

VERTICAL DESIGN REPEAT: Nil

HORIZONTAL DESIGN REPEAT: Nil

WASHING INSTRUCTIONS: (Dry Clean Only)     

*Colour shades may tend to vary between different dye-lots & production batches

*Due to variations in computer screens, images presented are not 100% similar to actual fabrics

*Other colours are available in book collections 2038 & 2040

2039 - 07

AVAILABLE COLOURS



2039 - 23



2040 - 43



SUITABLE FOR: Drapery & Soft Upholstery  

COMPOSITION: Polyester Rayon Natural Fiber

WIDTH: 140CM (+/- 5CM)

WEIGHT: 220GSM

VERTICAL DESIGN REPEAT: 12.2 CMS

HORIZONTAL DESIGN REPEAT: 11.8 CMS

WASHING INSTRUCTIONS: (Dry Clean Only)     

*Colour shades may tend to vary between different dye-lots & production batches

*Due to variations in computer screens, images presented are not 100% similar to actual fabrics

*Other colours are available in book collections 2038 & 2040

2039 - 08

AVAILABLE COLOURS



2039 - 26



2039 - 71



2040 - 48



SUITABLE FOR: Drapery & Soft Upholstery  

COMPOSITION: Polyester Rayon Natural Fiber

WIDTH: 140CM (+/- 5CM)

WEIGHT: 235GSM

VERTICAL DESIGN REPEAT: Nil

HORIZONTAL DESIGN REPEAT: Nil

WASHING INSTRUCTIONS: (Dry Clean Only)     

*Colour shades may tend to vary between different dye-lots & production batches

*Due to variations in computer screens, images presented are not 100% similar to actual fabrics

*Other colours are available in book collections 2039 & 2040

2039 - 09

AVAILABLE COLOURS



2038 - 32



SUITABLE FOR: Drapery & Soft Upholstery  

COMPOSITION: 75% Poly, 25% Cotton

WIDTH: 140CM (+/- 5CM)

WEIGHT: 220GSM

VERTICAL DESIGN REPEAT: 12 CMS

HORIZONTAL DESIGN REPEAT: 8.2 CMS

WASHING INSTRUCTIONS: (Dry Clean Only)     

*Colour shades may tend to vary between different dye-lots & production batches

*Due to variations in computer screens, images presented are not 100% similar to actual fabrics

*Other colours are available in book collections 2039 & 2040

2039 - 10

AVAILABLE COLOURS



2038 - 11



2038 - 25



2038 - 72



2040 - 38



SUITABLE FOR: Drapery & Soft Upholstery  

COMPOSITION: 75% Poly, 25% Cotton

WIDTH: 140CM (+/- 5CM)

WEIGHT: 225GSM

VERTICAL DESIGN REPEAT: 21.9 CMS

HORIZONTAL DESIGN REPEAT: 11.8 CMS

WASHING INSTRUCTIONS: (Dry Clean Only)     

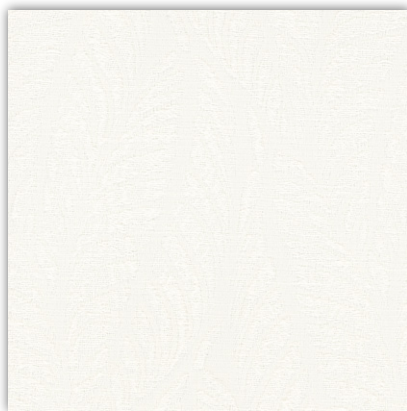
*Colour shades may tend to vary between different dye-lots & production batches

*Due to variations in computer screens, images presented are not 100% similar to actual fabrics

*Other colours are available in book collections 2038 & 2040

2038 - 23

AVAILABLE COLOURS



2038 - 23



2038 - 75



2039-77



2040 - 39



SUITABLE FOR: Drapery & Soft Upholstery  

COMPOSITION: 75% Poly, 25% Cotton

WIDTH: 140CM (+/- 5CM)

WEIGHT: 230GSM

VERTICAL DESIGN REPEAT: 30.2 CMS

HORIZONTAL DESIGN REPEAT: 23.6 CMS

WASHING INSTRUCTIONS: (Dry Clean Only)     

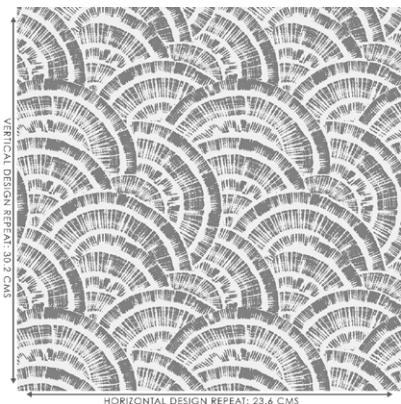
*Colour shades may tend to vary between different dye-lots & production batches

*Due to variations in computer screens, images presented are not 100% similar to actual fabrics

*Other colours are available in book collections 2038 & 2040

2039 -13

AVAILABLE COLOURS



DESIGN



2038 - 19



2038 - 74



2039 - 74



2040 - 42



SUITABLE FOR: Drapery & Soft Upholstery  

COMPOSITION: 75% Poly, 25% Cotton

WIDTH: 140CM (+/- 5CM)

WEIGHT: 225GSM

VERTICAL DESIGN REPEAT: 14.1 CMS

HORIZONTAL DESIGN REPEAT: 7.9 CMSt

WASHING INSTRUCTIONS: (Dry Clean Only)     

*Colour shades may tend to vary between different dye-lots & production batches

*Due to variations in computer screens, images presented are not 100% similar to actual fabrics

*Other colours are available in book collections 2038 & 2040

2039 - 14

AVAILABLE COLOURS



2038 - 02



2039 - 73



2040 - 40



SUITABLE FOR: Drapery & Soft Upholstery  

COMPOSITION: 74% Poly, 26% Cotton

WIDTH: 140CM (+/- 5CM)

WEIGHT: 225GSM

VERTICAL DESIGN REPEAT: 2.2 CMS

HORIZONTAL DESIGN REPEAT: 2.9 CMS

WASHING INSTRUCTIONS: (Dry Clean Only)     

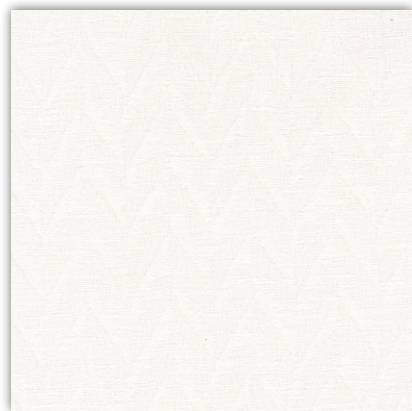
*Colour shades may tend to vary between different dye-lots & production batches

*Due to variations in computer screens, images presented are not 100% similar to actual fabrics

*Other colours are available in book collections 2038 & 2040

2039 - 15

AVAILABLE COLOURS



2038 - 21



2039 - 46



2039- 76



SUITABLE FOR: Drapery & Soft Upholstery  

COMPOSITION: Polyester Rayon Natural Fiber

WIDTH: 140CM (+/- 5CM)

WEIGHT: 225GSM

VERTICAL DESIGN REPEAT: Nil

HORIZONTAL DESIGN REPEAT: Nil

WASHING INSTRUCTIONS: (Dry Clean Only)     

*Colour shades may tend to vary between different dye-lots & production batches

*Due to variations in computer screens, images presented are not 100% similar to actual fabrics

*Other colours are available in book collections 2038 & 2040

2039 - 16

AVAILABLE COLOURS



2038 - 68



2039 - 47



2040 - 41



SUITABLE FOR: Drapery & Soft Upholstery 

COMPOSITION: 75% Poly, 25% Cotton

WIDTH: 140CM (+/- 5CM)

WEIGHT: 255GSM

VERTICAL DESIGN REPEAT: 40.8 CMS

HORIZONTAL DESIGN REPEAT: 23.0 CMS

WASHING INSTRUCTIONS: (Dry Clean Only) 

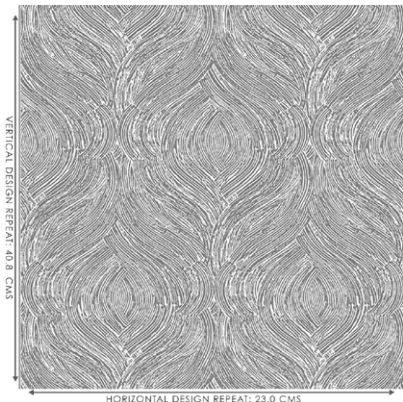
*Colour shades may tend to vary between different dye-lots & production batches

*Due to variations in computer screens, images presented are not 100% similar to actual fabrics

*Other colours are available in book collections 2039 & 2040

2039 - 17

AVAILABLE COLOURS



VERTICAL DESIGN REPEAT: 40.8 CMS

HORIZONTAL DESIGN REPEAT: 23.0 CMS

DESIGN



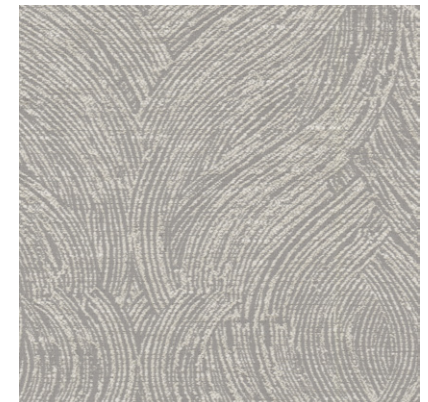
2038 - 69



2039 - 48



2039 - 79



2040 - 37



SUITABLE FOR: Drapery & Soft Upholstery  

COMPOSITION: Polyester Rayon Natural Fiber

WIDTH: 140CM (+/- 5CM)

WEIGHT: 245GSM

VERTICAL DESIGN REPEAT: 11.8 CMS

HORIZONTAL DESIGN REPEAT: 11.8 CMS

WASHING INSTRUCTIONS: (Dry Clean Only)     

*Colour shades may tend to vary between different dye-lots & production batches

*Due to variations in computer screens, images presented are not 100% similar to actual fabrics

*Other colours are available in book collections 2038 & 2040

2039 - 18

AVAILABLE COLOURS



2038 -12



2038 - 37



2039 - 53



2039 - 83



2040 - 68



SUITABLE FOR: Drapery & Soft Upholstery  

COMPOSITION: 75% Poly, 25% Cotton

WIDTH: 140CM (+/- 5CM)

WEIGHT: 220GSM

VERTICAL DESIGN REPEAT: 24.9 CMS

HORIZONTAL DESIGN REPEAT: 22.7 CMS

WASHING INSTRUCTIONS: (Dry Clean Only)     

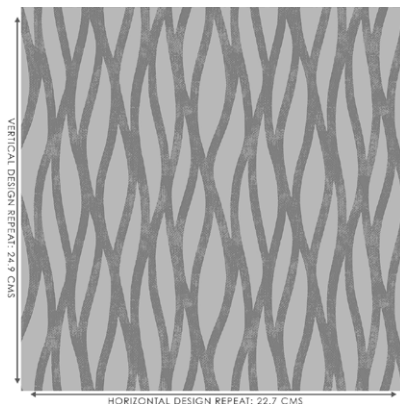
*Colour shades may tend to vary between different dye-lots & production batches

*Due to variations in computer screens, images presented are not 100% similar to actual fabrics

*Other colours are available in book collections 2039 & 2040

2039 - 19

AVAILABLE COLOURS



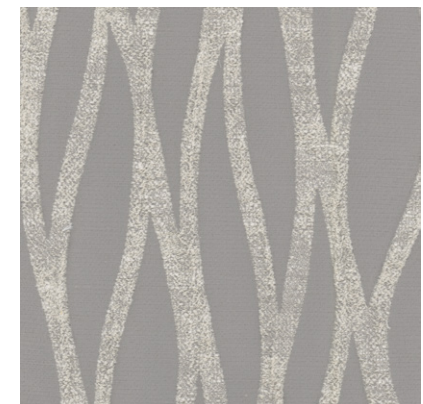
DESIGN



2039-17



2038 - 70



2040 - 06



SUITABLE FOR: Drapery & Soft Upholstery  

COMPOSITION: Polyester Rayon Natural Fiber

WIDTH: 140CM (+/- 5CM)

WEIGHT: 220GSM

VERTICAL DESIGN REPEAT: 6.2 CMS

HORIZONTAL DESIGN REPEAT: 5.9 CMS

WASHING INSTRUCTIONS: (Dry Clean Only)     

*Colour shades may tend to vary between different dye-lots & production batches

*Due to variations in computer screens, images presented are not 100% similar to actual fabrics

*Other colours are available in book collections 2039 & 2040

2039 - 20

AVAILABLE COLOURS



2038 - 07



2039 - 42



2039 - 67



2040 - 45



SUITABLE FOR: Drapery & Soft Upholstery  

COMPOSITION: Polyester Rayon Natural Fiber

WIDTH: 140CM (+/- 5CM)

WEIGHT: 235GSM

VERTICAL DESIGN REPEAT: 10.4 CMS

HORIZONTAL DESIGN REPEAT: 7.8 CMS

WASHING INSTRUCTIONS: (Dry Clean Only)      

*Colour shades may tend to vary between different dye-lots & production batches

*Due to variations in computer screens, images presented are not 100% similar to actual fabrics

*Other colours are available in book collections 2038 & 2040

2039 - 21

AVAILABLE COLOURS



2039 - 58



2040 - 18



2040 - 46



SUITABLE FOR: Drapery & Soft Upholstery  

COMPOSITION: Polyester Rayon Natural Fiber

WIDTH: 140CM (+/- 5CM)

WEIGHT: 230GSM

VERTICAL DESIGN REPEAT: 22.6 CMS

HORIZONTAL DESIGN REPEAT: 11.8 CMS

WASHING INSTRUCTIONS: (Dry Clean Only)      

*Colour shades may tend to vary between different dye-lots & production batches

*Due to variations in computer screens, images presented are not 100% similar to actual fabrics

*Other colours are available in book collections 2038 & 2040

2039 - 22

AVAILABLE COLOURS



2039 - 39



2040 - 44



SUITABLE FOR: Drapery & Soft Upholstery  

COMPOSITION: Polyester Rayon Natural Fiber

WIDTH: 140CM (+/- 5CM)

WEIGHT: 210GSM

VERTICAL DESIGN REPEAT: Nil

HORIZONTAL DESIGN REPEAT: Nil

WASHING INSTRUCTIONS: (Dry Clean Only)     

*Colour shades may tend to vary between different dye-lots & production batches

*Due to variations in computer screens, images presented are not 100% similar to actual fabrics

*Other colours are available in book collections 2038 & 2040

2039 - 24

AVAILABLE COLOURS



2040 - 03



2040 - 23



2040 - 65



2040 - 66



SUITABLE FOR: Drapery & Soft Upholstery  

COMPOSITION: Polyester Rayon Natural Fiber

WIDTH: 140CM (+/- 5CM)

WEIGHT: 265GSM

VERTICAL DESIGN REPEAT: 11.3 CMS

HORIZONTAL DESIGN REPEAT: 11.8 CMS

WASHING INSTRUCTIONS: (Dry Clean Only)     

*Colour shades may tend to vary between different dye-lots & production batches

*Due to variations in computer screens, images presented are not 100% similar to actual fabrics

*Other colours are available in book collections 2038 & 2040

2039 - 25

AVAILABLE COLOURS



2038 - 47



2040 - 61



SUITABLE FOR: Drapery & Soft Upholstery  

COMPOSITION: Polyester Rayon Natural Fiber

WIDTH: 140CM (+/- 5CM)

WEIGHT: 230GSM

VERTICAL DESIGN REPEAT: 2.8 CMS

HORIZONTAL DESIGN REPEAT: 4.1 CMS

WASHING INSTRUCTIONS: (Dry Clean Only)     

*Colour shades may tend to vary between different dye-lots & production batches

*Due to variations in computer screens, images presented are not %100 similar to actual fabrics

*Other colours are available in book collections 2039 & 2040

2039 - 27

AVAILABLE COLOURS



2038 - 26



2038 -35



2038 - 65



2039 - 59



2040 - 12



SUITABLE FOR: Drapery & Soft Upholstery  

COMPOSITION: Polyester Rayon Natural Fiber

WIDTH: 140CM (+/- 5CM)

WEIGHT: 210GSM

VERTICAL DESIGN REPEAT: 11.7 CMS

HORIZONTAL DESIGN REPEAT: 5.8 CMS

WASHING INSTRUCTIONS: (Dry Clean Only)     

*Colour shades may tend to vary between different dye-lots & production batches

*Due to variations in computer screens, images presented are not 100% similar to actual fabrics

*Other colours are available in book collections 2038 & 2040

2039 - 28

AVAILABLE COLOURS



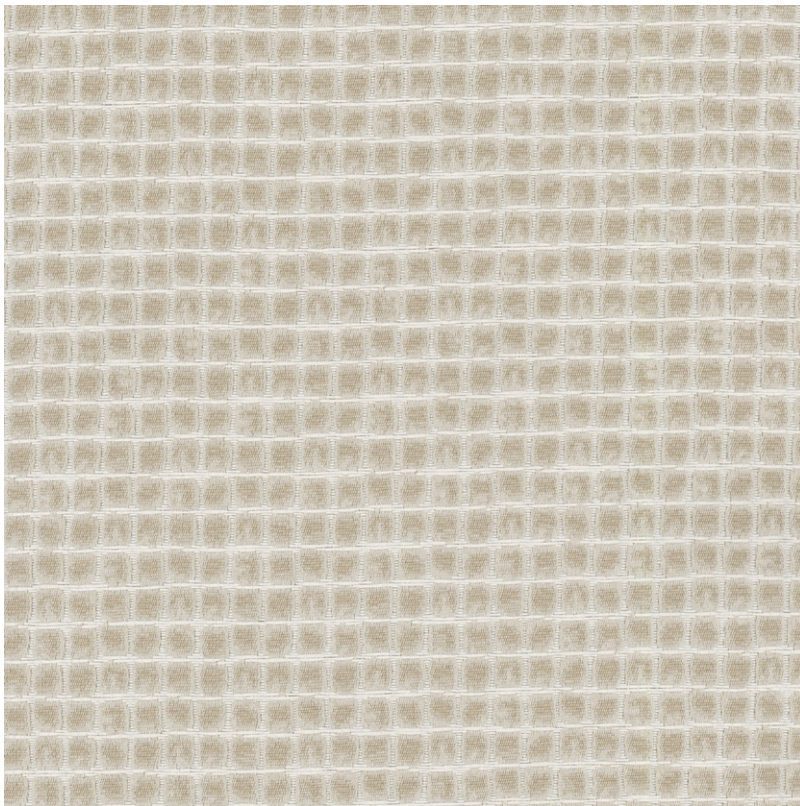
2038 - 53



2038 - 61



2040 - 49



SUITABLE FOR: Drapery & Soft Upholstery  

COMPOSITION: Polyester Rayon Natural Fiber

WIDTH: 140CM (+/- 5CM)

WEIGHT: 230GSM

VERTICAL DESIGN REPEAT: 3.2 CMS

HORIZONTAL DESIGN REPEAT: 2.9 CMS

WASHING INSTRUCTIONS: (Dry Clean Only)     

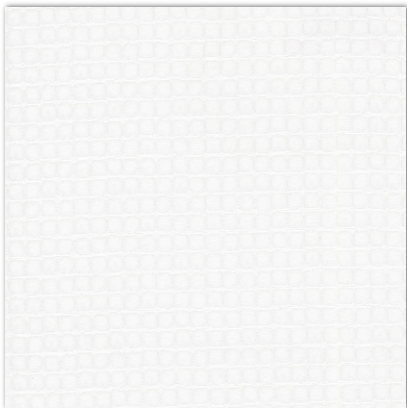
*Colour shades may tend to vary between different dye-lots & production batches

*Due to variations in computer screens, images presented are not 100% similar to actual fabrics

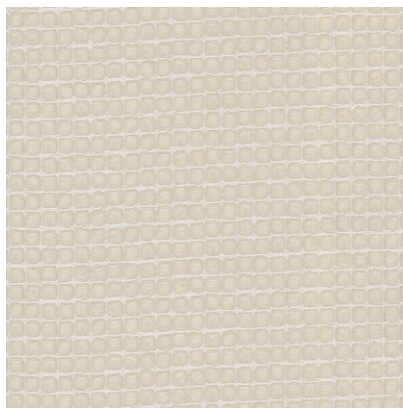
*Other colours are available in book collections 2038 & 2040

2039 - 29

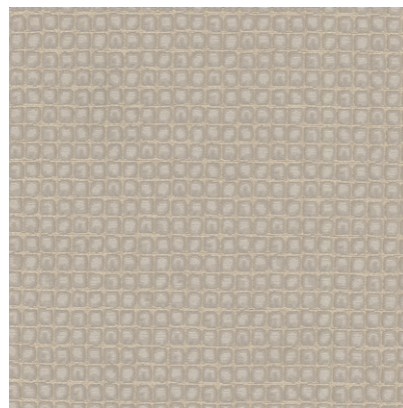
AVAILABLE COLOURS



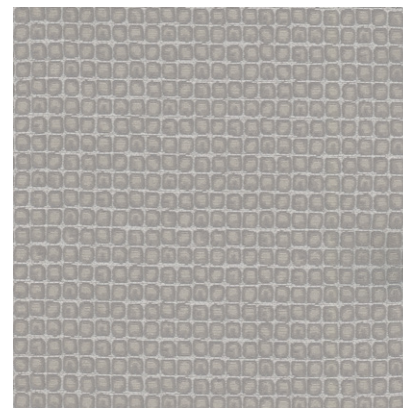
2038 - 18



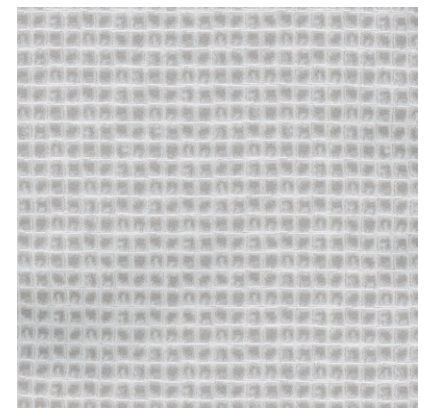
2038 -78



2039 - 55



2040 - 01



2040 - 14



SUITABLE FOR: Drapery & Soft Upholstery  

COMPOSITION: Polyester Rayon Natural Fiber

WIDTH: 140CM (+/- 5CM)

WEIGHT: 240GSM

VERTICAL DESIGN REPEAT: 32.3 CMS

HORIZONTAL DESIGN REPEAT: 23.2 CMS

WASHING INSTRUCTIONS: (Dry Clean Only)      

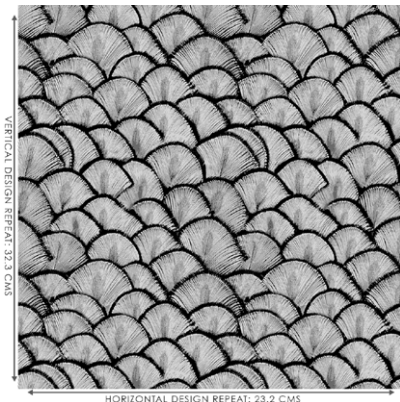
*Colour shades may tend to vary between different dye-lots & production batches

*Due to variations in computer screens, images presented are not %100 similar to actual fabrics

*Other colours are available in book collections 2039 & 2040

2039 - 30

AVAILABLE COLOURS



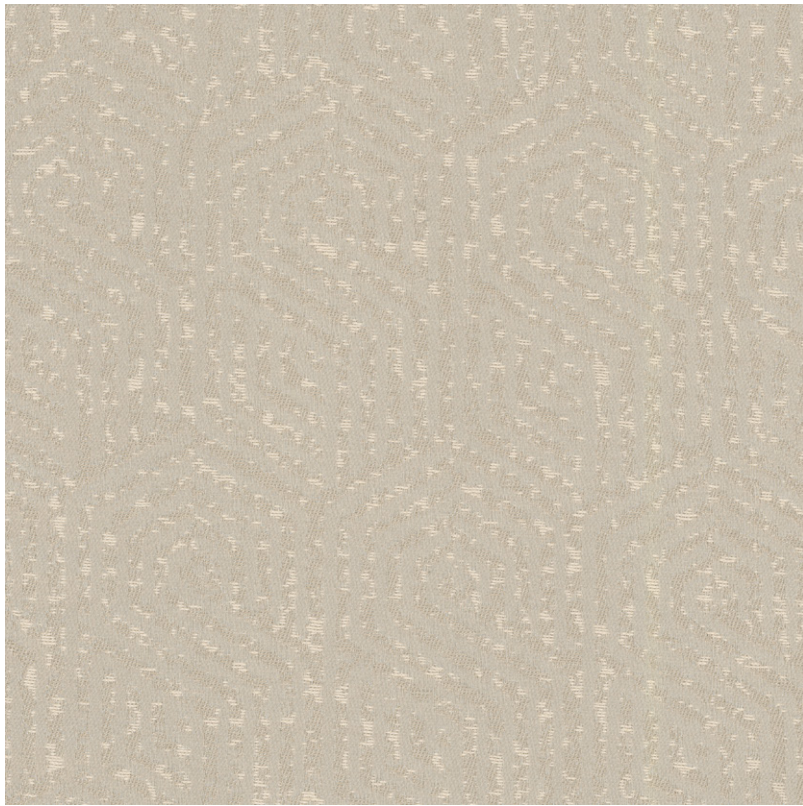
DESIGN



2038 - 59



2039 - 87



SUITABLE FOR: Drapery & Soft Upholstery  

COMPOSITION: 37% Poly, 23% Cationic, 40% Cotton

WIDTH: 140CM (+/- 5CM)

WEIGHT: 240GSM

VERTICAL DESIGN REPEAT: 15.6 CMS

HORIZONTAL DESIGN REPEAT: 5.8 CMS

WASHING INSTRUCTIONS: (Dry Clean Only)     

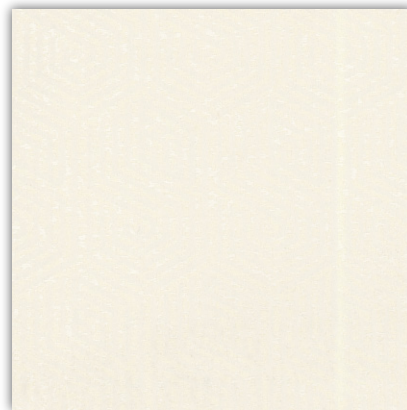
*Colour shades may tend to vary between different dye-lots & production batches

*Due to variations in computer screens, images presented are not 100% similar to actual fabrics

*Other colours are available in book collections 2038 & 2040

2039 - 31

AVAILABLE COLOURS



2038 - 29



2040 - 52



SUITABLE FOR: Drapery & Soft Upholstery  

COMPOSITION: Polyester Rayon Natural Fiber

WIDTH: 140CM (+/- 5CM)

WEIGHT: 250GSM

VERTICAL DESIGN REPEAT: 21.1 CMS

HORIZONTAL DESIGN REPEAT: 12.1 CMS

WASHING INSTRUCTIONS: (Dry Clean Only)     

*Colour shades may tend to vary between different dye-lots & production batches

*Due to variations in computer screens, images presented are not 100% similar to actual fabrics

*Other colours are available in book collections 2038 & 2040

2039 - 32

AVAILABLE COLOURS



2038 - 06



2039 - 52



2040 - 33



SUITABLE FOR: Drapery & Soft Upholstery  

COMPOSITION: Polyester Rayon Natural Fiber

WIDTH: 140CM (+/- 5CM)

WEIGHT: 235GSM

VERTICAL DESIGN REPEAT: 5.8 CMS

HORIZONTAL DESIGN REPEAT: 3.8 CMS

WASHING INSTRUCTIONS: (Dry Clean Only)     

*Colour shades may tend to vary between different dye-lots & production batches

*Due to variations in computer screens, images presented are not 100% similar to actual fabrics

*Other colours are available in book collections 2038 & 2040

2039 - 33

AVAILABLE COLOURS



2040 - 22



2040 - 24



2040 - 60



SUITABLE FOR: Drapery & Soft Upholstery  

COMPOSITION: Polyester Rayon Natural Fiber

WIDTH: 140CM (+/- 5CM)

WEIGHT: 190GSM

VERTICAL DESIGN REPEAT: 29 CMS

HORIZONTAL DESIGN REPEAT: 23.6 CMS

WASHING INSTRUCTIONS: (Dry Clean Only)     

*Colour shades may tend to vary between different dye-lots & production batches

*Due to variations in computer screens, images presented are not 100% similar to actual fabrics

*Other colours are available in book collections 2039 & 2040

2039 - 34

AVAILABLE COLOURS



2038 - 30



2039 - 80



2040 - 26



SUITABLE FOR: Drapery & Soft Upholstery  

COMPOSITION: Polyester Rayon Natural Fiber

WIDTH: 140CM (+/- 5CM)

WEIGHT: 240GSM

VERTICAL DESIGN REPEAT: 10.4 CMS

HORIZONTAL DESIGN REPEAT: 11.8 CMS

WASHING INSTRUCTIONS: (Dry Clean Only)     

*Colour shades may tend to vary between different dye-lots & production batches

*Due to variations in computer screens, images presented are not 100% similar to actual fabrics

*Other colours are available in book collections 2038 & 2040

2039 - 35

AVAILABLE COLOURS



2039 - 50



2040 - 35



SUITABLE FOR: Drapery & Soft Upholstery  

COMPOSITION: Polyester Rayon Natural Fiber

WIDTH: 140CM (+/- 5CM)

WEIGHT: 235GSM

VERTICAL DESIGN REPEAT: Nil

HORIZONTAL DESIGN REPEAT: Nil

WASHING INSTRUCTIONS: (Dry Clean Only)     

*Colour shades may tend to vary between different dye-lots & production batches

*Due to variations in computer screens, images presented are not 100% similar to actual fabrics

*Other colours are available in book collections 2038 & 2040

2039 - 36

AVAILABLE COLOURS



2038 - 08



2040 - 59



SUITABLE FOR: Drapery & Soft Upholstery  

COMPOSITION: Polyester Rayon Natural Fiber

WIDTH: 140CM (+/- 5CM)

WEIGHT: 205GSM

VERTICAL DESIGN REPEAT: Nil

HORIZONTAL DESIGN REPEAT: Nil

WASHING INSTRUCTIONS: (Dry Clean Only)     

*Colour shades may tend to vary between different dye-lots & production batches

*Due to variations in computer screens, images presented are not 100% similar to actual fabrics

*Other colours are available in book collections 2038 & 2040

2039 - 37

AVAILABLE COLOURS



2038 - 60



2039 - 86



2040 - 51



2040 - 55



SUITABLE FOR: Drapery & Soft Upholstery  

COMPOSITION: Polyester Rayon Natural Fiber

WIDTH: 140CM (+/- 5CM)

WEIGHT: 235GSM

VERTICAL DESIGN REPEAT: 43.9 CMS

HORIZONTAL DESIGN REPEAT: 23.6 CMS

WASHING INSTRUCTIONS: (Dry Clean Only)     

*Colour shades may tend to vary between different dye-lots & production batches

*Due to variations in computer screens, images presented are not 100% similar to actual fabrics

*Other colours are available in book collections 2039 & 2040

2039 - 38

AVAILABLE COLOURS



DESIGN



2038 - 41



2039 - 64



SUITABLE FOR: Drapery & Soft Upholstery  

COMPOSITION: Polyester Rayon Natural Fiber

WIDTH: 140CM (+/- 5CM)

WEIGHT: 245GSM

VERTICAL DESIGN REPEAT: 38.0 CMS

HORIZONTAL DESIGN REPEAT: 23.2 CMS

WASHING INSTRUCTIONS: (Dry Clean Only)      

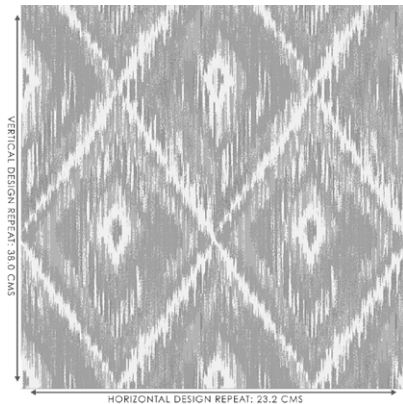
*Colour shades may tend to vary between different dye-lots & production batches

*Due to variations in computer screens, images presented are not 100% similar to actual fabrics

*Other colours are available in book collections 2038 & 2040

2039 - 40

AVAILABLE COLOURS



DESIGN



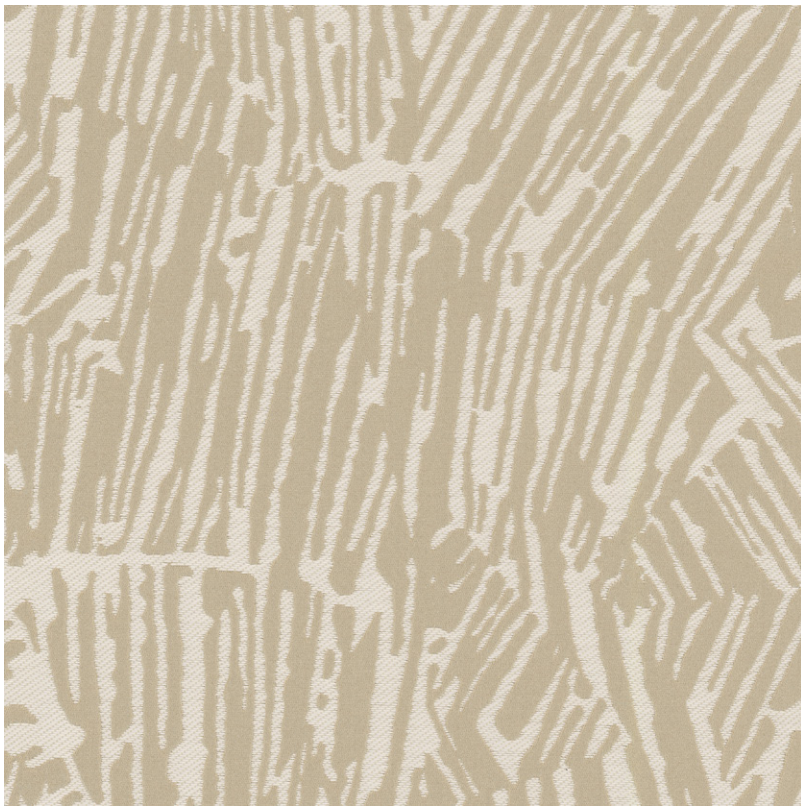
2038- 45



2039 - 63



2039 - 84



SUITABLE FOR: Drapery & Soft Upholstery  

COMPOSITION: Polyester Rayon Natural Fiber

WIDTH: 140CM (+/- 5CM)

WEIGHT: 245GSM

VERTICAL DESIGN REPEAT: Nil

HORIZONTAL DESIGN REPEAT: Nil

WASHING INSTRUCTIONS: (Dry Clean Only)     

*Colour shades may tend to vary between different dye-lots & production batches

*Due to variations in computer screens, images presented are not 100% similar to actual fabrics

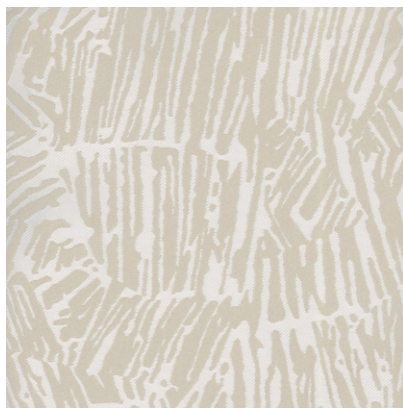
*Other colours are available in book collections 2038 & 2040

2039 - 41

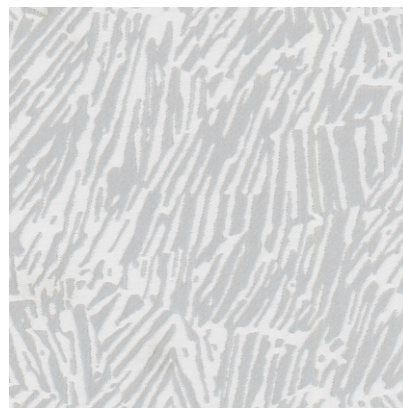
AVAILABLE COLOURS



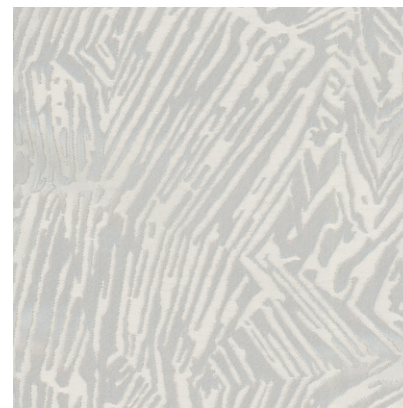
2038 - 10



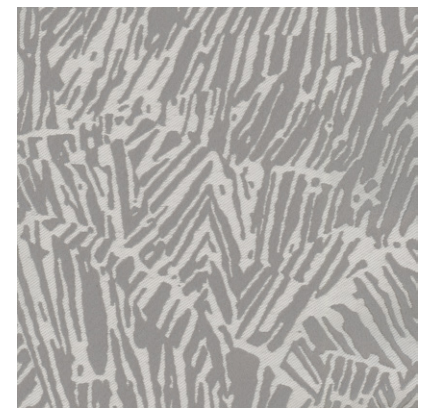
2038 -77



2040 - 08



2040 - 21



2040 - 29



SUITABLE FOR: Drapery & Soft Upholstery  

COMPOSITION: Polyester Rayon Natural Fiber

WIDTH: 140CM (+/- 5CM)

WEIGHT: 240GSM

VERTICAL DESIGN REPEAT: 23.9 CMS

HORIZONTAL DESIGN REPEAT: 23.1 CMS

WASHING INSTRUCTIONS: (Dry Clean Only)     

*Colour shades may tend to vary between different dye-lots & production batches

*Due to variations in computer screens, images presented are not 100% similar to actual fabrics

*Other colours are available in book collections 2038 & 2040

2039 - 43

AVAILABLE COLOURS



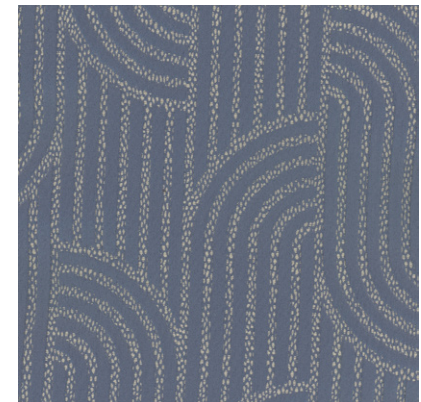
2038 - 03



2038 - 27



2040 - 50



2040 - 69



SUITABLE FOR: Drapery & Soft Upholstery  

COMPOSITION: Polyester Rayon Natural Fiber

WIDTH: 140CM (+/- 5CM)

WEIGHT: 235GSM

VERTICAL DESIGN REPEAT: Nil

HORIZONTAL DESIGN REPEAT: Nil

WASHING INSTRUCTIONS: (Dry Clean Only)     

*Colour shades may tend to vary between different dye-lots & production batches

*Due to variations in computer screens, images presented are not 100% similar to actual fabrics

*Other colours are available in book collections 2038 & 2040

2039 - 44

AVAILABLE COLOURS



2038 - 31



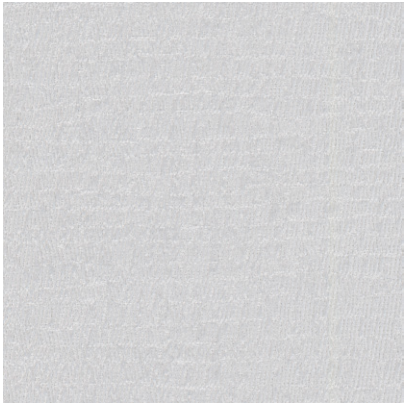
2038 - 79



2039 - 81



2040 - 02



2040 - 11



2040 - 58





SUITABLE FOR: Drapery & Soft Upholstery  

COMPOSITION: 75% Poly, 25% Cotton

WIDTH: 140CM (+/- 5CM)

WEIGHT: 225GSM

VERTICAL DESIGN REPEAT: Nil

HORIZONTAL DESIGN REPEAT: Nil

WASHING INSTRUCTIONS: (Dry Clean Only)     

*Colour shades may tend to vary between different dye-lots & production batches

*Due to variations in computer screens, images presented are not 100% similar to actual fabrics

*Other colours are available in book collections 2038 & 2040

2039 - 45

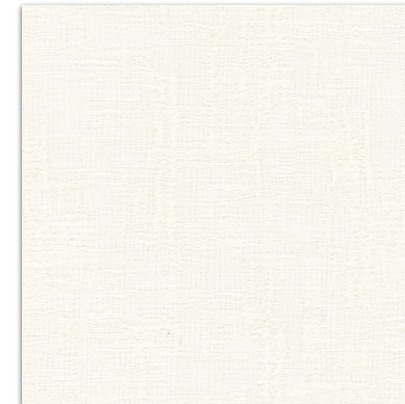
AVAILABLE COLOURS



2038 - 01



2038 - 09



2038 - 24



2039 - 78



2040 - 36



2040 - 54





SUITABLE FOR: Drapery & Soft Upholstery  

COMPOSITION: Polyester Rayon Natural Fiber

WIDTH: 140CM (+/- 5CM)

WEIGHT: 240GSM

VERTICAL DESIGN REPEAT: 31.5 CMS

HORIZONTAL DESIGN REPEAT: 23.6 CMS

WASHING INSTRUCTIONS: (Dry Clean Only)     

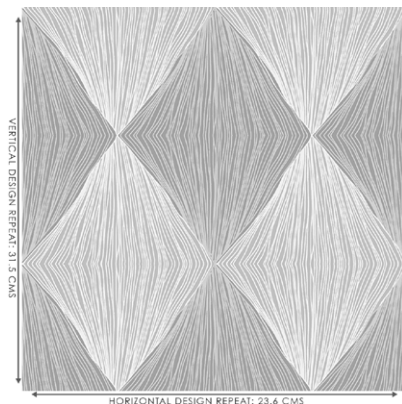
*Colour shades may tend to vary between different dye-lots & production batches

*Due to variations in computer screens, images presented are not 100% similar to actual fabrics

*Other colours are available in book collections 2038 & 2040

2038 - 49

AVAILABLE COLOURS



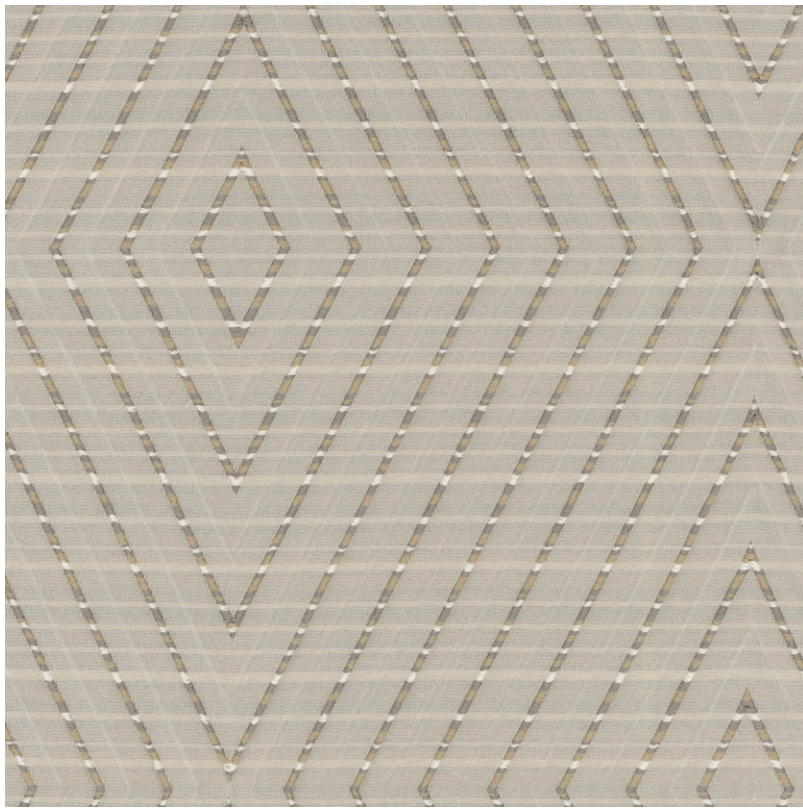
DESIGN



2039 - 49



2040 -16



2039 - 54

SUITABLE FOR: Drapery & Soft Upholstery  

COMPOSITION: Polyester Rayon Natural Fiber

WIDTH: 140CM (+/- 5CM)

WEIGHT: 225GSM

VERTICAL DESIGN REPEAT: 23.8 CMS

HORIZONTAL DESIGN REPEAT: 23 CMS

WASHING INSTRUCTIONS: (Dry Clean Only)      

*Colour shades may tend to vary between different dye-lots & production batches

*Due to variations in computer screens, images presented are not 100% similar to actual fabrics

*Other colours are available in book collections 2038 & 2040

AVAILABLE COLOURS



2038 - 40



2039 - 72



2040 - 47



SUITABLE FOR: Drapery & Soft Upholstery  

COMPOSITION: Polyester Rayon Natural Fiber

WIDTH: 140CM (+/- 5CM)

WEIGHT: 235GSM

VERTICAL DESIGN REPEAT: Nil

HORIZONTAL DESIGN REPEAT: Nil

WASHING INSTRUCTIONS: (Dry Clean Only)     

*Colour shades may tend to vary between different dye-lots & production batches

*Due to variations in computer screens, images presented are not 100% similar to actual fabrics

*Other colours are available in book collections 2038 & 2040

2039 - 56

AVAILABLE COLOURS



2038 - 15



SUITABLE FOR: Drapery & Soft Upholstery  

COMPOSITION: Polyester Rayon Natural Fiber

WIDTH: 140CM (+/- 5CM)

WEIGHT: 245GSM

VERTICAL DESIGN REPEAT: 24.1 CMS

HORIZONTAL DESIGN REPEAT: 24.4 CMS

WASHING INSTRUCTIONS: (Dry Clean Only)     

*Colour shades may tend to vary between different dye-lots & production batches

*Due to variations in computer screens, images presented are not 100% similar to actual fabrics

*Other colours are available in book collections 2038 & 2040

2039 - 57

AVAILABLE COLOURS



2038 - 56



SUITABLE FOR: Drapery & Soft Upholstery  

COMPOSITION: Polyester Rayon Natural Fiber

WIDTH: 140CM (+/- 5CM)

WEIGHT: 240GSM

VERTICAL DESIGN REPEAT: Nil

HORIZONTAL DESIGN REPEAT: Nil

WASHING INSTRUCTIONS: (Dry Clean Only)     

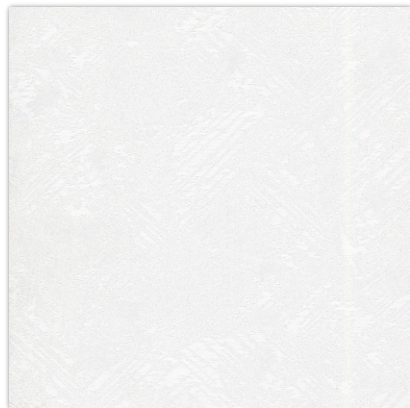
*Colour shades may tend to vary between different dye-lots & production batches

*Due to variations in computer screens, images presented are not 100% similar to actual fabrics

*Other colours are available in book collections 2038 & 2040

2038 - 60

AVAILABLE COLOURS



2038 - 16



2038 - 39



2040 - 28



SUITABLE FOR: Drapery & Soft Upholstery  

COMPOSITION: Polyester Rayon Natural Fiber

WIDTH: 140CM (+/- 5CM)

WEIGHT: 240GSM

VERTICAL DESIGN REPEAT: 24.1 CMS

HORIZONTAL DESIGN REPEAT: 23.6 CMS

WASHING INSTRUCTIONS: (Dry Clean Only)     

*Colour shades may tend to vary between different dye-lots & production batches

*Due to variations in computer screens, images presented are not 100% similar to actual fabrics

*Other colours are available in book collections 2039 & 2040

2039 - 62

AVAILABLE COLOURS



2038 - 33



2038 - 48



2040 - 64



SUITABLE FOR: Drapery & Soft Upholstery  

COMPOSITION: Polyester Rayon Natural Fiber

WIDTH: 140CM (+/- 5CM)

WEIGHT: 200GSM

VERTICAL DESIGN REPEAT: Nil

HORIZONTAL DESIGN REPEAT: Nil

WASHING INSTRUCTIONS: (Dry Clean Only)      

*Colour shades may tend to vary between different dye-lots & production batches

*Due to variations in computer screens, images presented are not 100% similar to actual fabrics

*Other colours are available in book collections 2038 & 2040

2039 - 65

AVAILABLE COLOURS



2038 - 38



2038 - 50



2040 - 20



SUITABLE FOR: Drapery & Soft Upholstery  

COMPOSITION: Polyester Rayon Natural Fiber

WIDTH: 140CM (+/- 5CM)

WEIGHT: 245GSM

VERTICAL DESIGN REPEAT: 47.5 CMS

HORIZONTAL DESIGN REPEAT: 23.4 CMS

WASHING INSTRUCTIONS: (Dry Clean Only)     

*Colour shades may tend to vary between different dye-lots & production batches

*Due to variations in computer screens, images presented are not 100% similar to actual fabrics

*Other colours are available in book collections 2038 & 2040

2039 - 68

AVAILABLE COLOURS



DESIGN



2038 - 44



2039 -73



SUITABLE FOR: Drapery & Soft Upholstery  

COMPOSITION: Polyester Rayon Natural Fiber

WIDTH: 140CM (+/- 5CM)

WEIGHT: 245GSM

VERTICAL DESIGN REPEAT: 23.4 CMS

HORIZONTAL DESIGN REPEAT: 24.5 CMS

WASHING INSTRUCTIONS: (Dry Clean Only)     

*Colour shades may tend to vary between different dye-lots & production batches

*Due to variations in computer screens, images presented are not 100% similar to actual fabrics

*Other colours are available in book collections 2038 & 2040

2039 - 69

AVAILABLE COLOURS



2038 - 57



2038 - 63



2040 - 17



2040 - 34



SUITABLE FOR: Drapery & Soft Upholstery  

COMPOSITION: Polyester Rayon Natural Fiber

WIDTH: 140CM (+/- 5CM)

WEIGHT: 245GSM

VERTICAL DESIGN REPEAT: 23.4 CMS

HORIZONTAL DESIGN REPEAT: 24.1 CMS

WASHING INSTRUCTIONS: (Dry Clean Only)     

*Colour shades may tend to vary between different dye-lots & production batches

*Due to variations in computer screens, images presented are not 100% similar to actual fabrics

*Other colours are available in book collections 2038 & 2040

2038 - 70

AVAILABLE COLOURS



2038 - 55



2038 - 67



2040 - 56



SUITABLE FOR: Drapery & Soft Upholstery  

COMPOSITION: 75% Poly, 25% Cotton

WIDTH: 140CM (+/- 5CM)

WEIGHT: 230GSM

VERTICAL DESIGN REPEAT: 14.5 CMS

HORIZONTAL DESIGN REPEAT: 7 CMS

WASHING INSTRUCTIONS: (Dry Clean Only)     

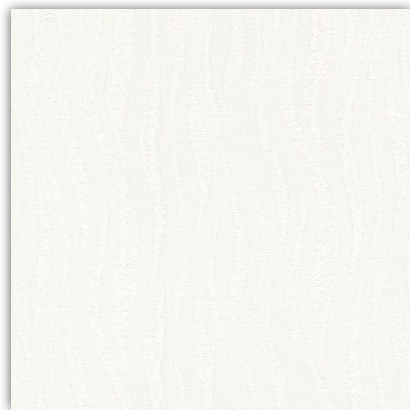
*Colour shades may tend to vary between different dye-lots & production batches

*Due to variations in computer screens, images presented are not 100% similar to actual fabrics

*Other colours are available in book collections 2039 & 2040

2039 - 75

AVAILABLE COLOURS



2038 - 22



2038 - 71



2040 - 05

U

ULTRA FABRICS

EST. 1990

ULTRA FURNISHING FABRICS FZCO

Unit 262. Dubai Textile City
Al Warsan 1, Dubai, UAE

Follow our socials
ultrafabrics.ae



www.ultrafabrics.ae