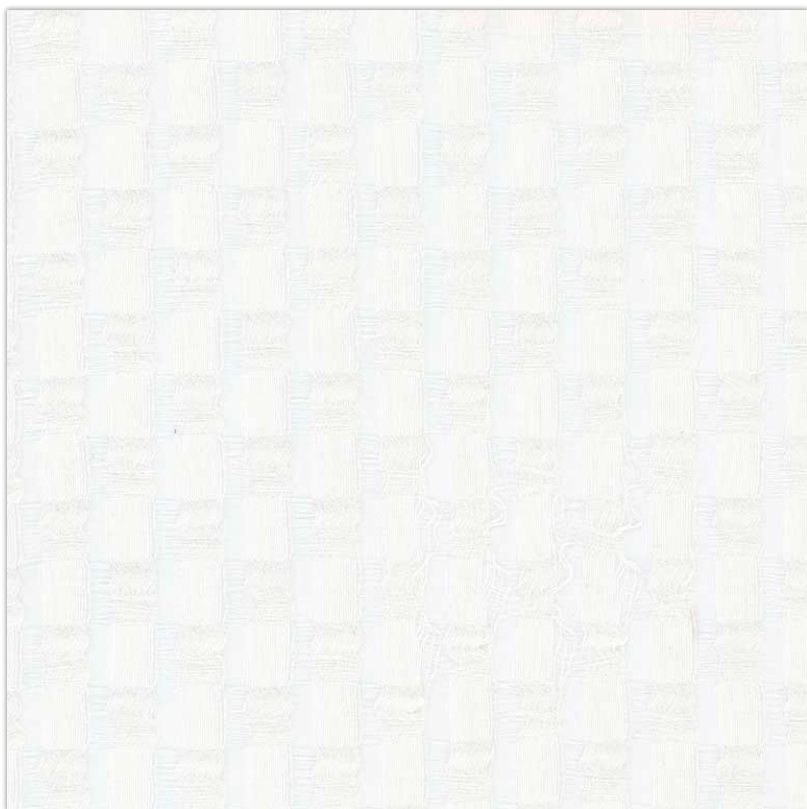




EUPHORIC

CAT NO. 2033

A collection of sheers that blends luxury with peace. Euphoric for drapery & blinds veils the sun and suffuses soft hues that are ineffably angelic. These fabrics mix cotton & linen and produce textures of graceful delicacy. Suitable for homeowners with a taste for fine aesthetics.



2033 - 01

SUITABLE FOR: Drapery & Blinds 

COMPOSITION: 78% Viscose & 22% Poly

WIDTH: 300CM (+/-10CM)

WEIGHT: 75GSM

VERTICAL DESIGN REPEAT: 2.3CM

HORIZONTAL DESIGN REPEAT: 2.1CM

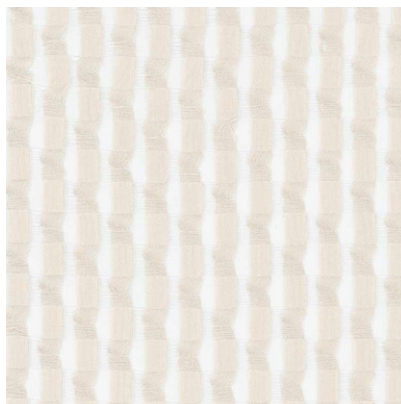
WASHING INSTRUCTIONS: (Dry Clean Only) 

*Fabric With Lead Band

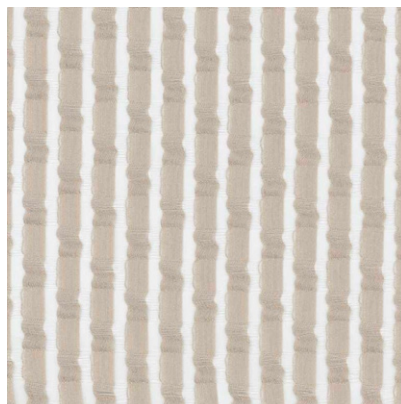
*Colour shades may tend to vary between different dye-lots & production batches

*Due to variations in computer screens, images presented are not 100% similar to actual fabrics

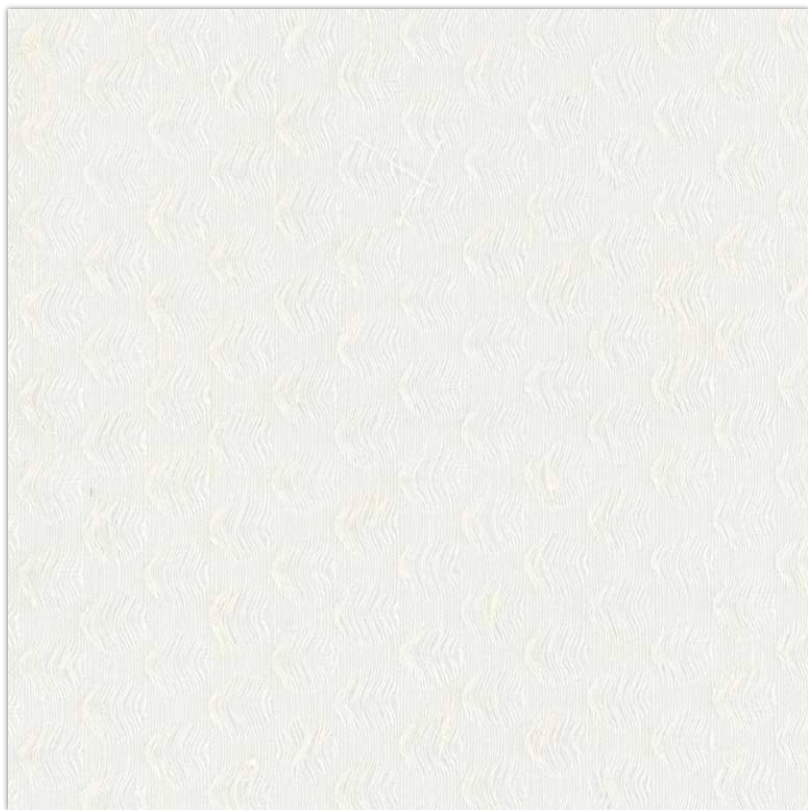
AVAILABLE COLOURS



2033 - 30



2033 - 39



2033 - 02

SUITABLE FOR: Drapery & Blinds 

COMPOSITION: 75% Linen & 25% Poly

WIDTH: 280CM (+/-10CM)

WEIGHT: 107GSM

VERTICAL DESIGN REPEAT: Nil

HORIZONTAL DESIGN REPEAT: Nil

WASHING INSTRUCTIONS: (Dry Clean Only)     

*Fabric With Lead Band

*Colour shades may tend to vary between different dye-lots & production batches

*Due to variations in computer screens, images presented are not 100% similar to actual fabrics

AVAILABLE COLOURS



2033 - 34





SUITABLE FOR: Drapery & Blinds 

COMPOSITION: 75% Linen & 25% Poly

WIDTH: 310CM (+/-5CM)

WEIGHT: 171GSM

VERTICAL DESIGN REPEAT: Nil

HORIZONTAL DESIGN REPEAT: Nil

WASHING INSTRUCTIONS: (Dry Clean Only)     

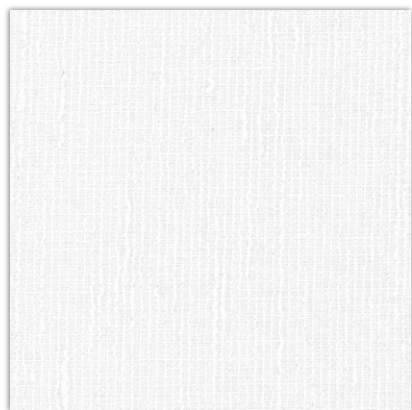
*Fabric With Lead Band

*Colour shades may tend to vary between different dye-lots & production batches

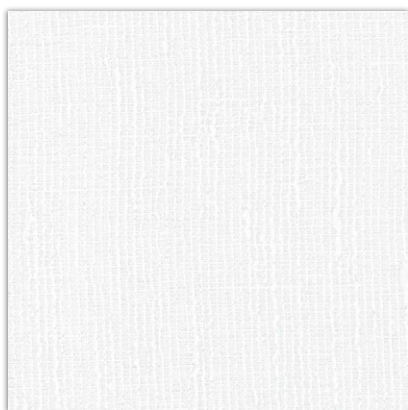
*Due to variations in computer screens, images presented are not 100% similar to actual fabrics

2033 - 03

AVAILABLE COLOURS



2033 - 17



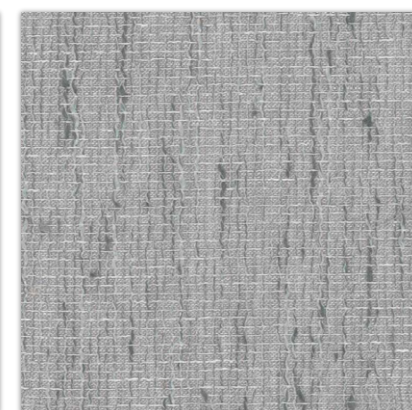
2033 - 20



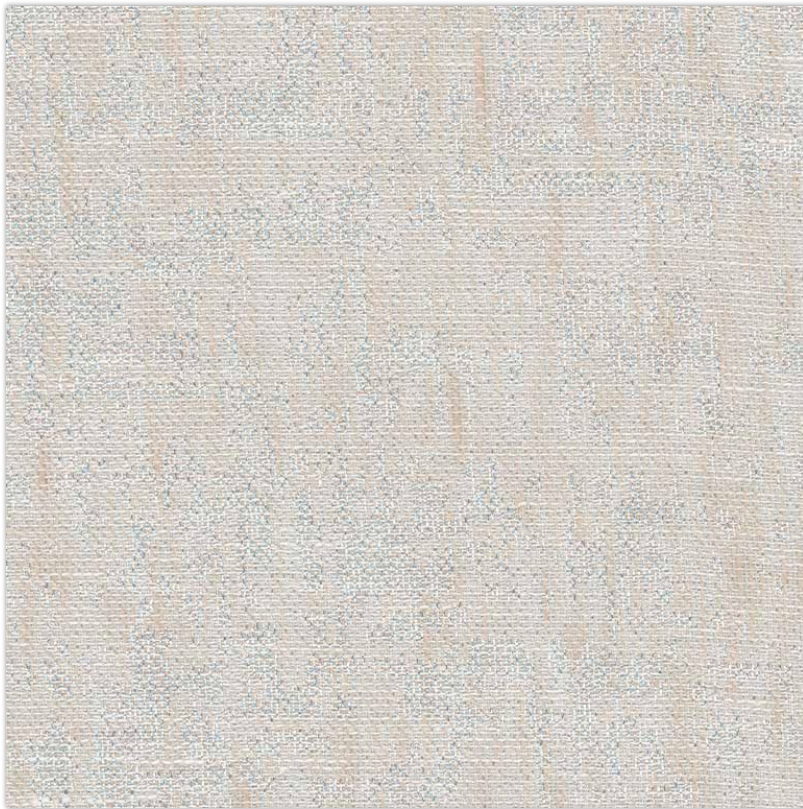
2033 - 36



2033 - 43



2033 - 49



SUITABLE FOR: Drapery & Blinds  

COMPOSITION: 29% Poly, 35% Cotton & 36% Linen

WIDTH: 310CM (+/-5CM)

WEIGHT: 122GSM

VERTICAL DESIGN REPEAT: 34.8CM

HORIZONTAL DESIGN REPEAT: 33.8CM

WASHING INSTRUCTIONS: (Dry Clean Only)      

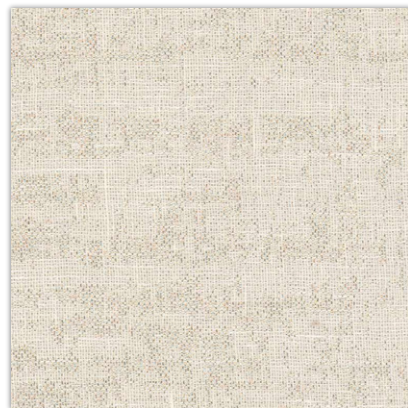
*Fabric With Lead Band

*Colour shades may tend to vary between different dye-lots & production batches

*Due to variations in computer screens, images presented are not 100% similar to actual fabrics

2033 - 04

AVAILABLE COLOURS



2033 - 33



2033 - 41



2033 - 45



2033 - 05

SUITABLE FOR: Drapery & Blinds 

COMPOSITION: 89% Poly & 11% Viscose

WIDTH: 300CM (+/-10CM)

WEIGHT: 136GSM

VERTICAL DESIGN REPEAT: 5.25CM

HORIZONTAL DESIGN REPEAT: 2.2CM

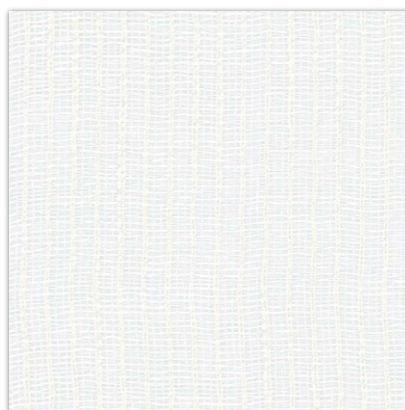
WASHING INSTRUCTIONS: (Dry Clean Only)     

*Fabric With Lead Band

*Colour shades may tend to vary between different dye-lots & production batches

*Due to variations in computer screens, images presented are not 100% similar to actual fabrics

AVAILABLE COLOURS



2033 - 21



2033 - 51



SUITABLE FOR: Drapery & Blinds 

COMPOSITION: Polyester Rayon Natural Fiber

WIDTH: 320CM (+/-10CM)

WEIGHT: 182GSM

VERTICAL DESIGN REPEAT: Nil

HORIZONTAL DESIGN REPEAT: Nil

WASHING INSTRUCTIONS: (Dry Clean Only)       

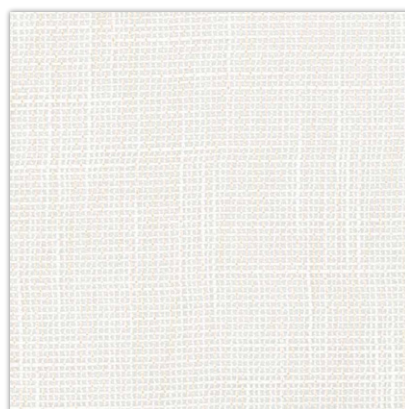
*Fabric With Lead Band

*Colour shades may tend to vary between different dye-lots & production batches

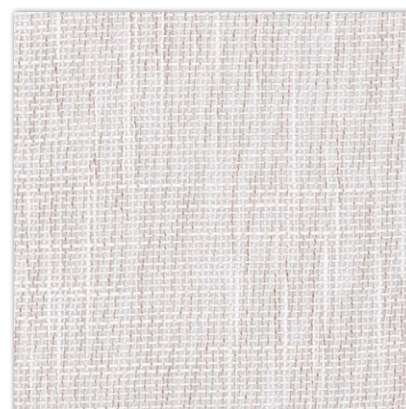
*Due to variations in computer screens, images presented are not 100% similar to actual fabrics

2033 - 06

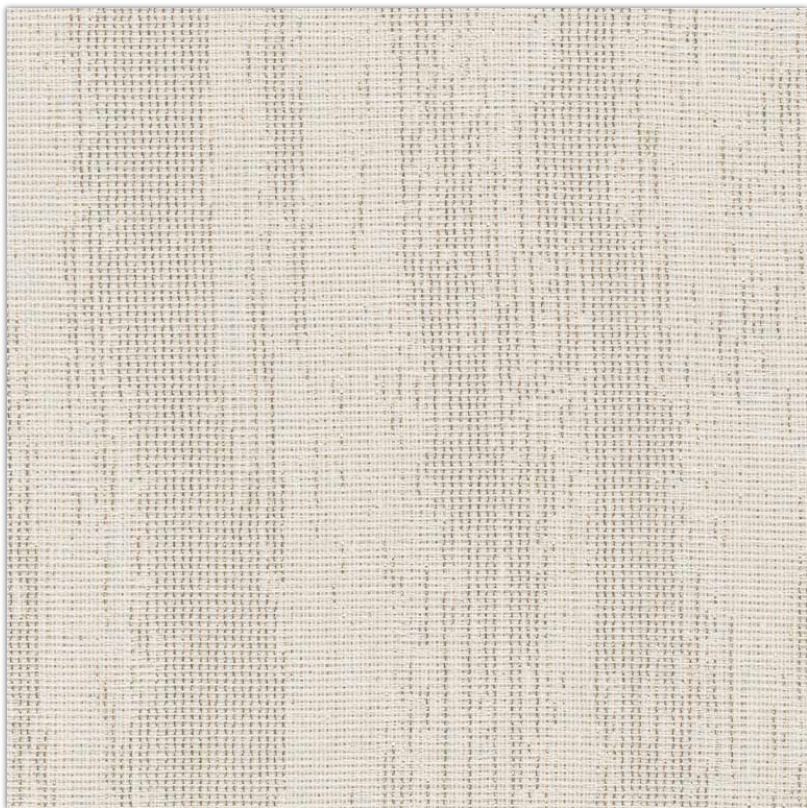
AVAILABLE COLOURS



2033 - 28



2033 - 46



SUITABLE FOR: Drapery & Blinds 

COMPOSITION: 59% Poly, 25% Viscose & 16% Linen

WIDTH: 310CM (+/-5CM)

WEIGHT: 130GSM

VERTICAL DESIGN REPEAT: 17.3CM

HORIZONTAL DESIGN REPEAT: 13.3CM

WASHING INSTRUCTIONS: (Dry Clean Only)      

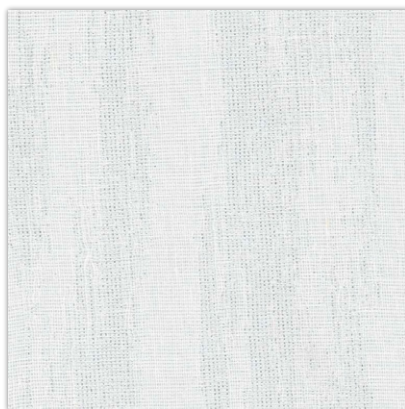
*Fabric With Lead Band

*Colour shades may tend to vary between different dye-lots & production batches

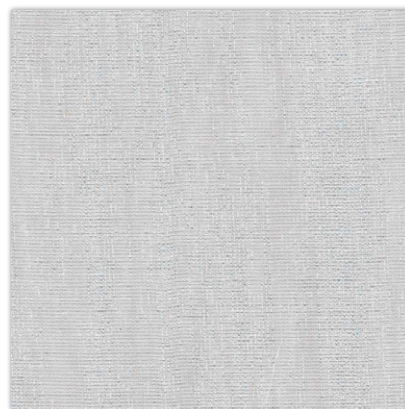
*Due to variations in computer screens, images presented are not 100% similar to actual fabrics

2033 - 07

AVAILABLE COLOURS



2033 - 44



2033 - 47



SUITABLE FOR: Drapery & Blinds 

COMPOSITION: 54% Linen, 25% Cotton & 21% Poly

WIDTH: 310CM (+/-10CM)

WEIGHT: 100GSM

VERTICAL DESIGN REPEAT: 8.5CM

HORIZONTAL DESIGN REPEAT: 7.5CM

WASHING INSTRUCTIONS: (Dry Clean Only)     

*Fabric With Lead Band

*Colour shades may tend to vary between different dye-lots & production batches

*Due to variations in computer screens, images presented are not 100% similar to actual fabrics

2033 - 08

AVAILABLE COLOURS



2033 - 24



2033 - 48



SUITABLE FOR: Drapery & Blinds  

COMPOSITION: 41% Poly, 30% Cotton & 29% Linen

WIDTH: 310CM (+/-5CM)

WEIGHT: 139GSM

VERTICAL DESIGN REPEAT: 3.3CM

HORIZONTAL DESIGN REPEAT: 3.45CM

WASHING INSTRUCTIONS: (Dry Clean Only)     

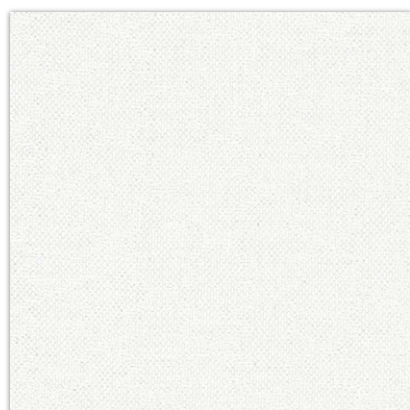
*Fabric With Lead Band

*Colour shades may tend to vary between different dye-lots & production batches

*Due to variations in computer screens, images presented are not 100% similar to actual fabrics

2033 - 09

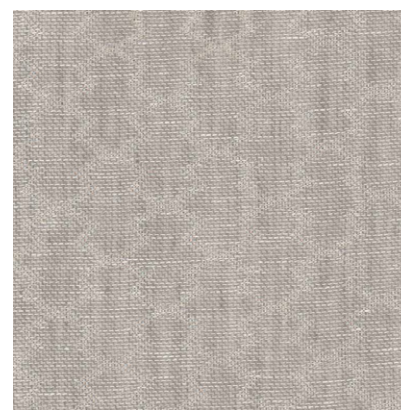
AVAILABLE COLOURS



2033 - 25



2033 - 37



2033 - 42



2033 - 10

SUITABLE FOR: Drapery & Blinds  

COMPOSITION: 66% Cotton & 34% Poly

WIDTH: 300CM (+/-10CM)

WEIGHT: 45GSM

VERTICAL DESIGN REPEAT: 3.2CM

HORIZONTAL DESIGN REPEAT: 3.5CM

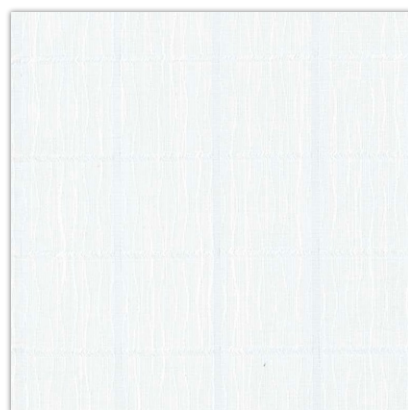
WASHING INSTRUCTIONS: (Dry Clean Only)      

*Fabric With Lead Band

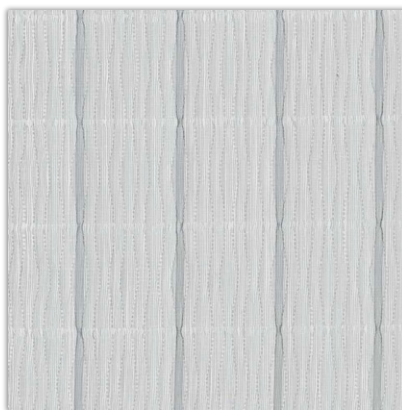
*Colour shades may tend to vary between different dye-lots & production batches

*Due to variations in computer screens, images presented are not 100% similar to actual fabrics

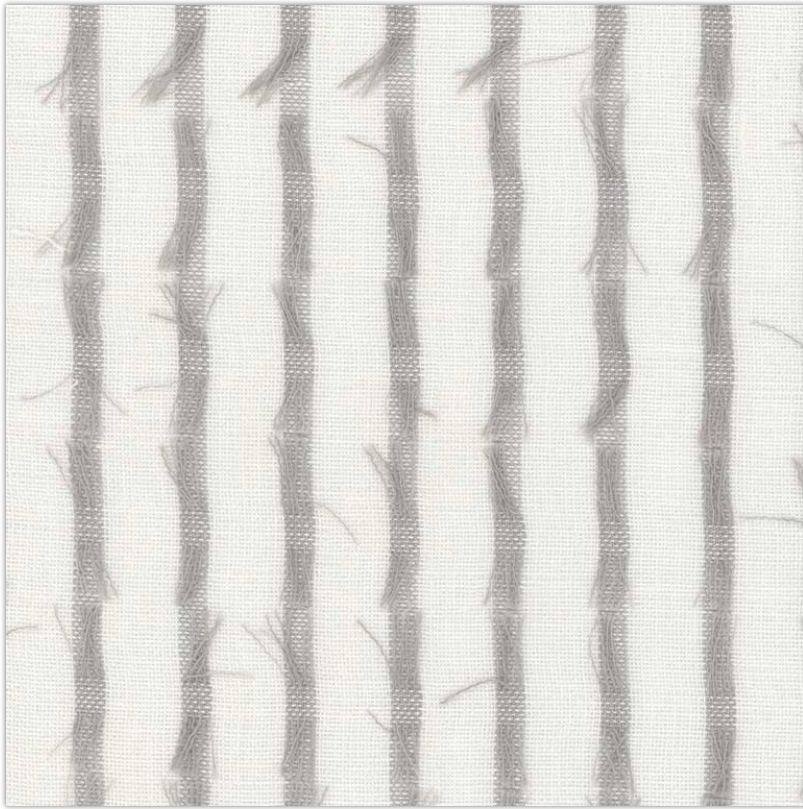
AVAILABLE COLOURS



2033 - 16



2033 - 50



SUITABLE FOR: Drapery & Blinds 

COMPOSITION: 50% Viscose, 22% Linen, 15% Cotton & 13% Poly

WIDTH: 310CM (+/-5CM)

WEIGHT: 125GSM

VERTICAL DESIGN REPEAT: 1.8CM

HORIZONTAL DESIGN REPEAT: 2.8CM

WASHING INSTRUCTIONS: (Dry Clean Only) 

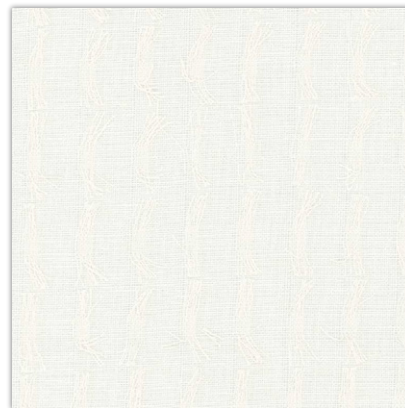
*Fabric With Lead Band

*Colour shades may tend to vary between different dye-lots & production batches

*Due to variations in computer screens, images presented are not 100% similar to actual fabrics

2033 - 11

AVAILABLE COLOURS



2033 - 22



2033 - 31



SUITABLE FOR: Drapery & Blinds  

COMPOSITION: 30% Poly & 70% Cotton

WIDTH: 310CM (+/-5CM)

WEIGHT: 144GSM

VERTICAL DESIGN REPEAT: Nil

HORIZONTAL DESIGN REPEAT: Nil

WASHING INSTRUCTIONS: (Dry Clean Only)     

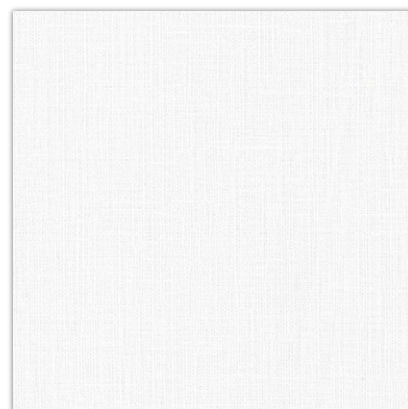
*Fabric With Lead Band

*Colour shades may tend to vary between different dye-lots & production batches

*Due to variations in computer screens, images presented are not 100% similar to actual fabrics

2033 - 12

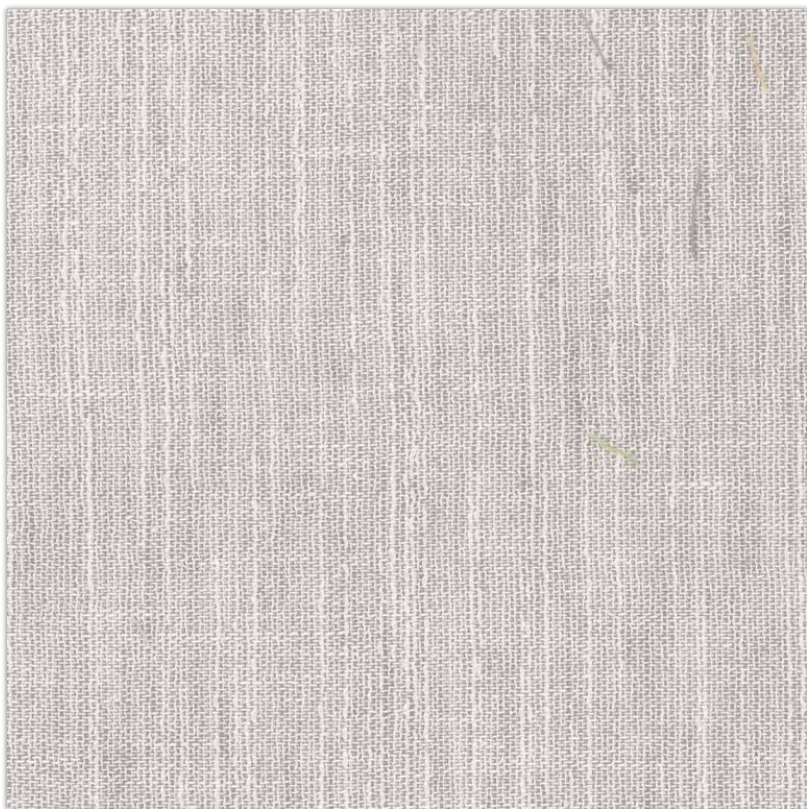
AVAILABLE COLOURS



2033 - 18



2033 - 35



SUITABLE FOR: Drapery & Blinds  

COMPOSITION: 41% Poly, 30% Cotton & 29% Linen

WIDTH: 310CM (+/-5CM)

WEIGHT: 139GSM

VERTICAL DESIGN REPEAT: 3.3CM

HORIZONTAL DESIGN REPEAT: 3.45CM

WASHING INSTRUCTIONS: (Dry Clean Only)     

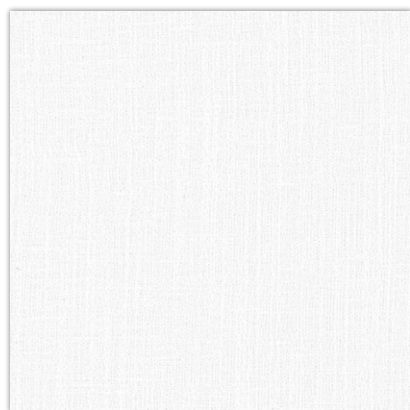
*Fabric With Lead Band

*Colour shades may tend to vary between different dye-lots & production batches

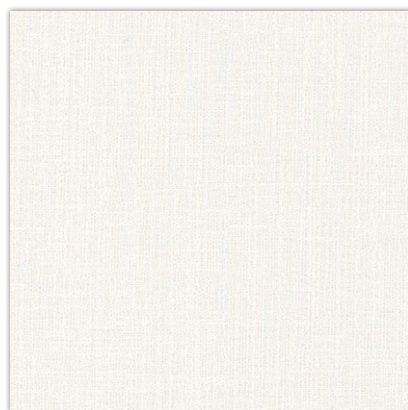
*Due to variations in computer screens, images presented are not 100% similar to actual fabrics

2033 - 13

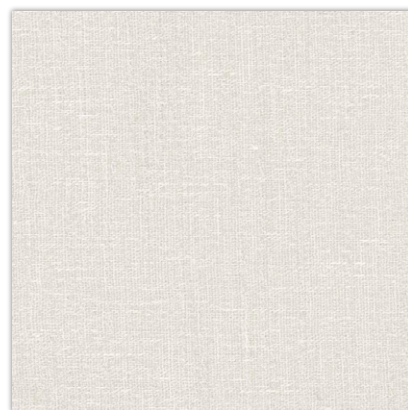
AVAILABLE COLOURS



2033 - 19



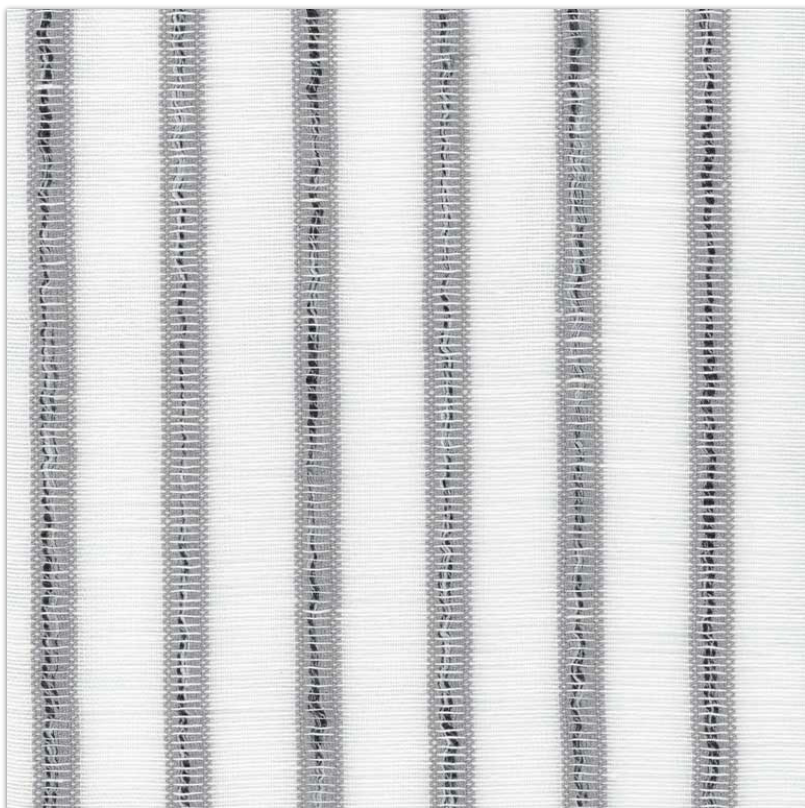
2033 - 27



2033 - 39



2033 - 32



2033 - 14

SUITABLE FOR: Drapery & Blinds 

COMPOSITION: 73% Viscose, 14% Linen & 13% Poly

WIDTH: 305CM (+/-10CM)

WEIGHT: 190GSM

VERTICAL DESIGN REPEAT: 2.2CM

HORIZONTAL DESIGN REPEAT: Stripe

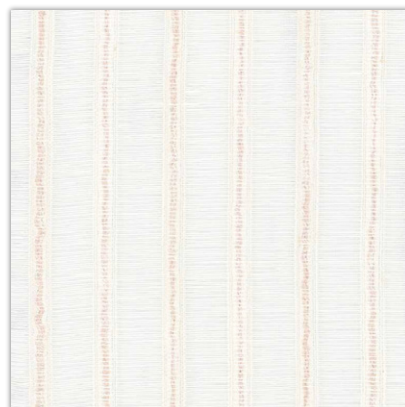
WASHING INSTRUCTIONS: (Dry Clean Only)      

*Fabric With Lead Band

*Colour shades may tend to vary between different dye-lots & production batches

*Due to variations in computer screens, images presented are not 100% similar to actual fabrics

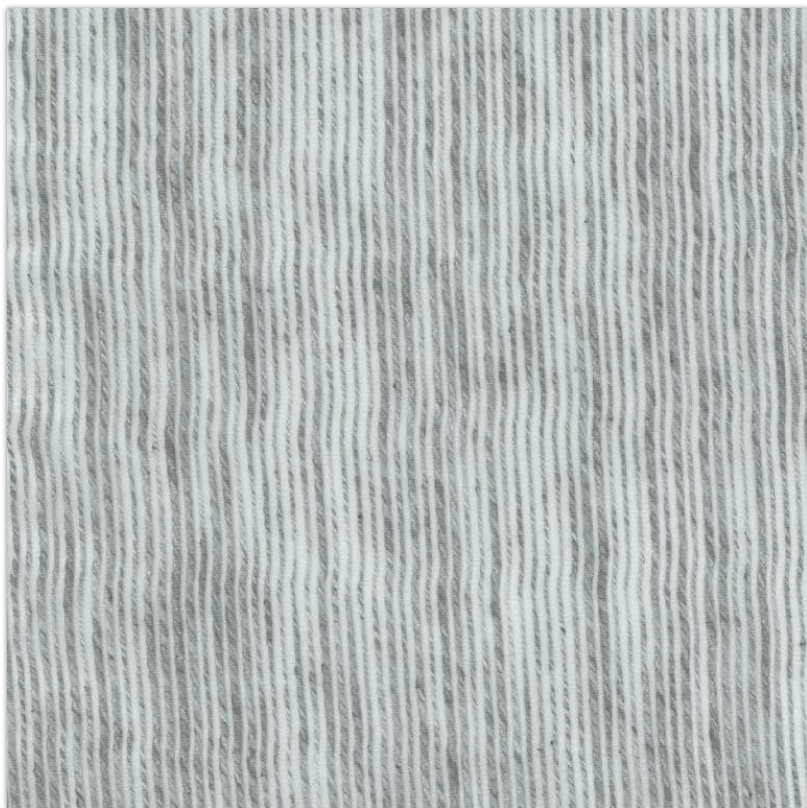
AVAILABLE COLOURS



2033 - 26



2033 - 38



SUITABLE FOR: Drapery & Blinds 

COMPOSITION: 80% Poly & 20% Cotton

WIDTH: 310CM (+/-10CM)

WEIGHT: 125GSM

VERTICAL DESIGN REPEAT: Nil

HORIZONTAL DESIGN REPEAT: Nil

WASHING INSTRUCTIONS: (Dry Clean Only)     

*Fabric With Lead Band

*Colour shades may tend to vary between different dye-lots & production batches

*Due to variations in computer screens, images presented are not 100% similar to actual fabrics

2033 - 15

AVAILABLE COLOURS



2033 - 23



2033 - 40



ULTRA FABRICS

EST. 1990

ULTRA FURNISHING FABRICS FZCO

Unit 262. Dubai Textile City
Al Warsan 1, Dubai, UAE

Follow our socials
ultrafabrics.ae



www.ultrafabrics.ae