



# CONNATE

CAT NO. 2028

This collection portrays modernism in its truest form. Every fabric boldly radiates its colour. The sense of touch these textures evoke is enhanced by the finish applied to the yarns. These plains were inspired by the simplicity of Scandinavian decor.



**SUITABLE FOR:** Drapery & Upholstery  

**COMPOSITION:** 65% Polyester & 35% Cotton

**WIDTH:** 140CM

**WEIGHT:** 290GSM

**VERTICAL DESIGN REPEAT:** Nil

**HORIZONTAL DESIGN REPEAT:** Nil

**MARTINDALE:** 25,000 Rubs

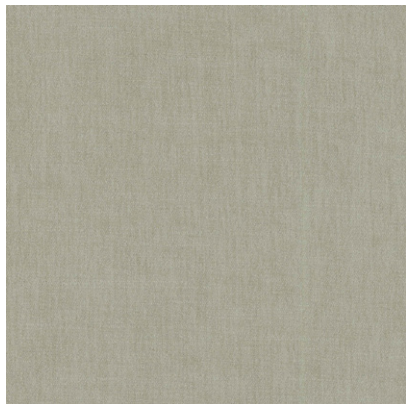
**WASHING INSTRUCTIONS:** (Dry Clean Only)     

\*Colour shades may tend to vary between different dye-lots & production batches

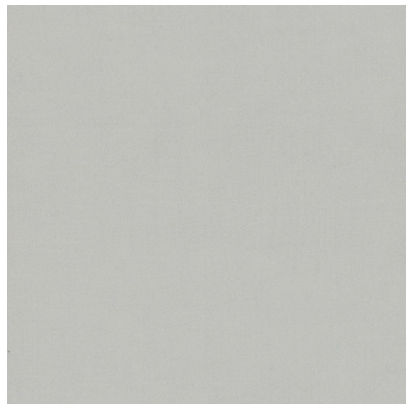
\*Due to variations in computer screens, images presented are not 100% similar to actual fabrics

2028 - 01

AVAILABLE COLOURS



2028 - 03



2028 - 05



2028 - 07

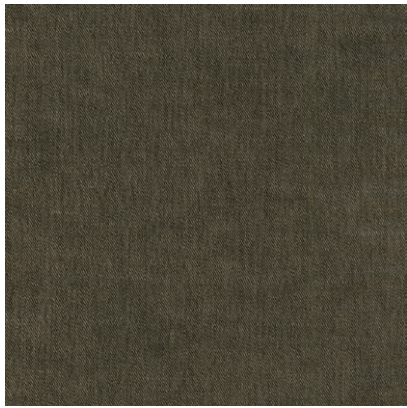


2028 - 09

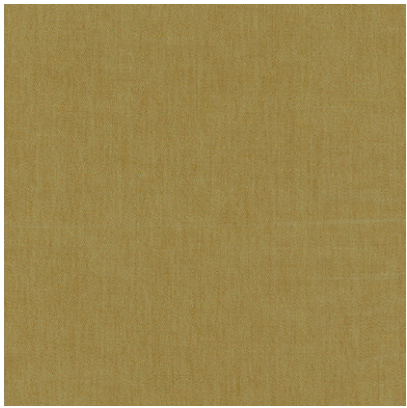


2028 - 11





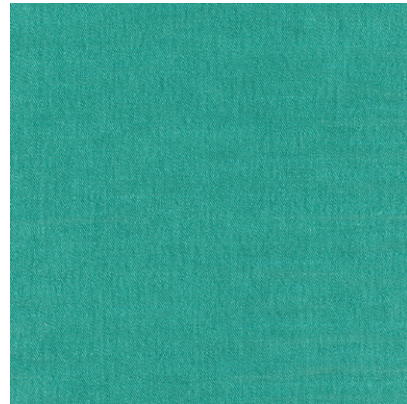
2028 - 13



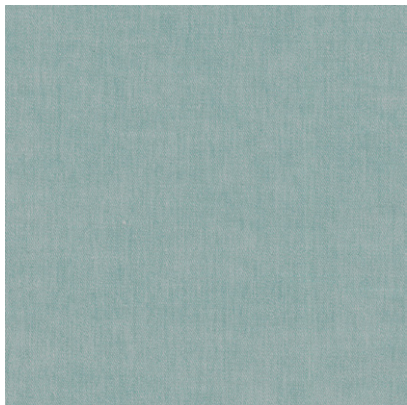
2028 - 15



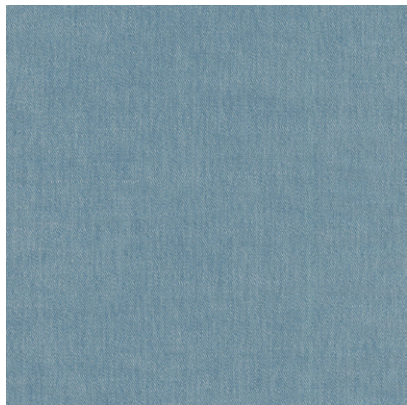
2028 - 17



2028 - 19



2028 - 21



2028 - 23







2028 - 25



2028 - 27



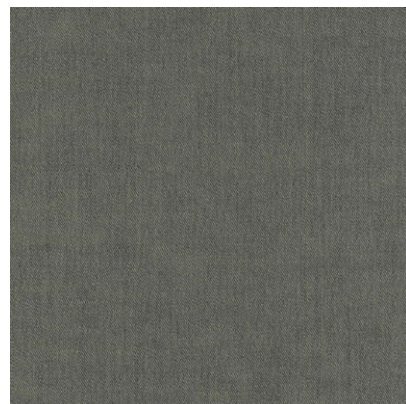
2028 - 29



2028 - 31



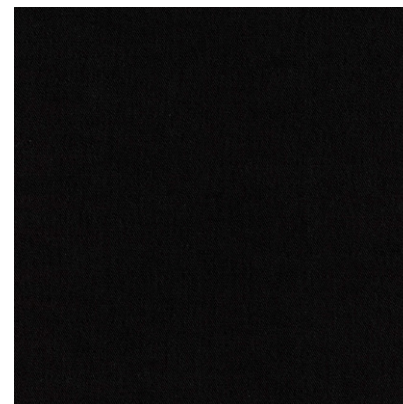
2028 - 33



2028 - 35



2028 - 37



2028 - 39





**SUITABLE FOR:** Drapery & Upholstery  

**COMPOSITION:** 72% Polyester & 28% Cationic

**WIDTH:** 140CM

**WEIGHT:** 363GSM

**VERTICAL DESIGN REPEAT:** Nil

**HORIZONTAL DESIGN REPEAT:** Nil

**MARTINDALE:** 50,000 Rubs

**WASHING INSTRUCTIONS:** (Dry Clean Only)     

\*Colour shades may tend to vary between different dye-lots & production batches

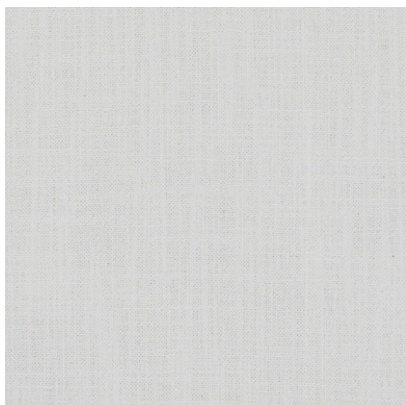
\*Due to variations in computer screens, images presented are not 100% similar to actual fabrics

2028 - 02

AVAILABLE COLOURS



2028 - 04



2028 - 06



2028 - 08



2028 - 10



2028 - 12





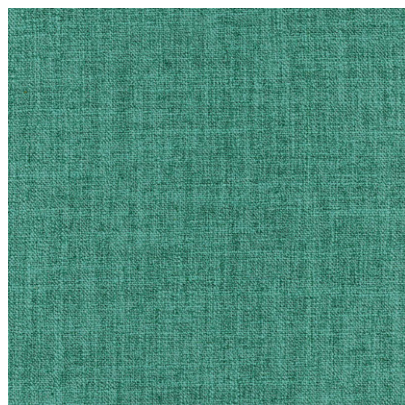
2028 - 14



2028 - 16



2028 - 18



2028 - 20



2028 - 22



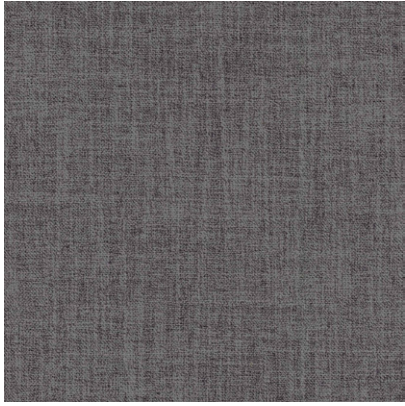
2028 - 24



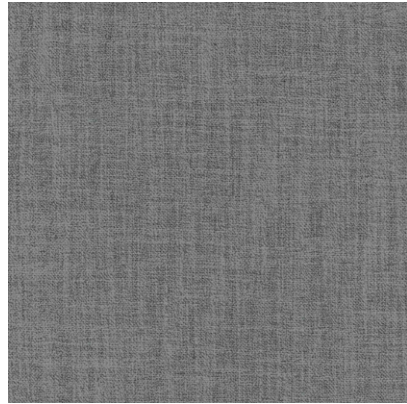




2028 - 26



2028 - 28



2028 - 30



2028 - 32



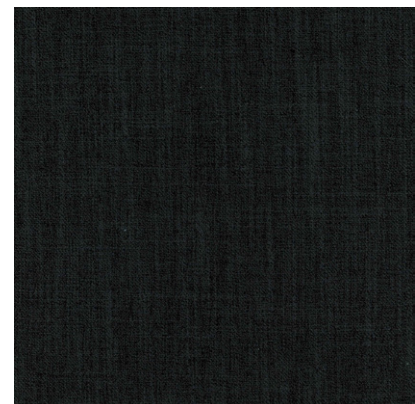
2028 - 34



2028 - 36



2028 - 38



2028 - 40





ULTRA FABRICS

EST. 1990

ULTRA FURNISHING FABRICS FZCO

Unit 262. Dubai Textile City  
Al Warsan 1, Dubai, UAE

Follow our socials  
[ultrafabrics.ae](http://ultrafabrics.ae)



[www.ultrafabrics.ae](http://www.ultrafabrics.ae)