



RUSTIC

CAT NO. 1363

Discover a more economical range of fabric weaves that add a touch of serenity & neutrality to any space. The RUSTIC collection features a wide selection of dry textures for your drapery and cushions. This collection features textured plains, herringbone, and salt slubs in muted shades of classic beige, smoke, & marble.



SUITABLE FOR: Drapery & Soft Upholstery  

COMPOSITION: 60% Poly, 25% Cotton, 15% Linen

WIDTH: 140CM (+/- 5CM)

WEIGHT: 211GSM

VERTICAL DESIGN REPEAT: Nil

HORIZONTAL DESIGN REPEAT: Nil

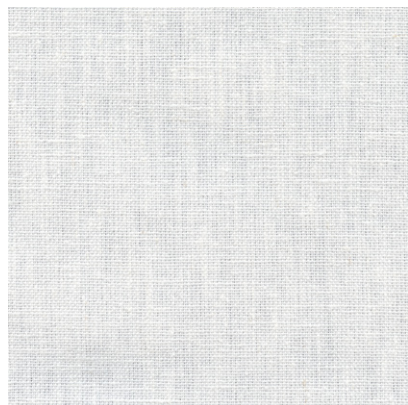
WASHING INSTRUCTIONS: (Dry Clean Only)     

*Colour shades may tend to vary between different dye-lots & production batches

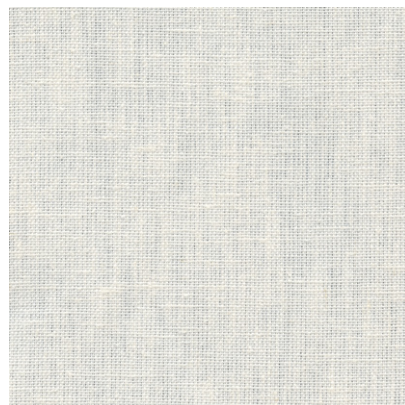
*Due to variations in computer screens, images presented are not 100% similar to actual fabrics

1363 - 01

AVAILABLE COLOURS



1363 - 25



1363 - 35



1363 - 44



SUITABLE FOR: Drapery & Soft Upholstery  

COMPOSITION: 45% Cotton, 39% Poly, 8% Linen, 8% Viscose

WIDTH: 140CM (+/- 5CM)

WEIGHT: 260GSM

VERTICAL DESIGN REPEAT: Nil

HORIZONTAL DESIGN REPEAT: Nil

WASHING INSTRUCTIONS: (Dry Clean Only)      

*Colour shades may tend to vary between different dye-lots & production batches

*Due to variations in computer screens, images presented are not 100% similar to actual fabrics

1363 - 02

AVAILABLE COLOURS



1363 - 32



1363 - 38



1363 - 58



SUITABLE FOR: Drapery & Soft Upholstery  

COMPOSITION: 61% Poly, 39% Cotton

WIDTH: 140CM (+/- 5CM)

WEIGHT: 283GSM

VERTICAL DESIGN REPEAT: Nil

HORIZONTAL DESIGN REPEAT: Nil

WASHING INSTRUCTIONS: (Dry Clean Only)     

*Colour shades may tend to vary between different dye-lots & production batches

*Due to variations in computer screens, images presented are not 100% similar to actual fabrics

1363 - 03

AVAILABLE COLOURS



1363 - 27



1363 - 43



SUITABLE FOR: Drapery & Soft Upholstery  

COMPOSITION: 63% Poly, 37% Cotton

WIDTH: 140CM (+/- 5CM)

WEIGHT: 250GSM

VERTICAL DESIGN REPEAT: Nil

HORIZONTAL DESIGN REPEAT: Nil

WASHING INSTRUCTIONS: (Dry Clean Only)     

*Colour shades may tend to vary between different dye-lots & production batches

*Due to variations in computer screens, images presented are not 100% similar to actual fabrics

1363 - 04

AVAILABLE COLOURS



1363 - 20



1363 - 31



1363 - 46



1363 - 61





SUITABLE FOR: Drapery & Soft Upholstery  

COMPOSITION: 74% Poly, 26% Cotton

WIDTH: 140CM (+/- 5CM)

WEIGHT: 230GSM

VERTICAL DESIGN REPEAT: Nil

HORIZONTAL DESIGN REPEAT: Nil

WASHING INSTRUCTIONS: (Dry Clean Only)     

*Colour shades may tend to vary between different dye-lots & production batches

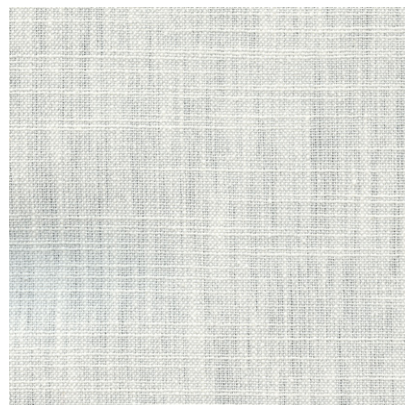
*Due to variations in computer screens, images presented are not 100% similar to actual fabrics

1363 - 05

AVAILABLE COLOURS



1363 - 19



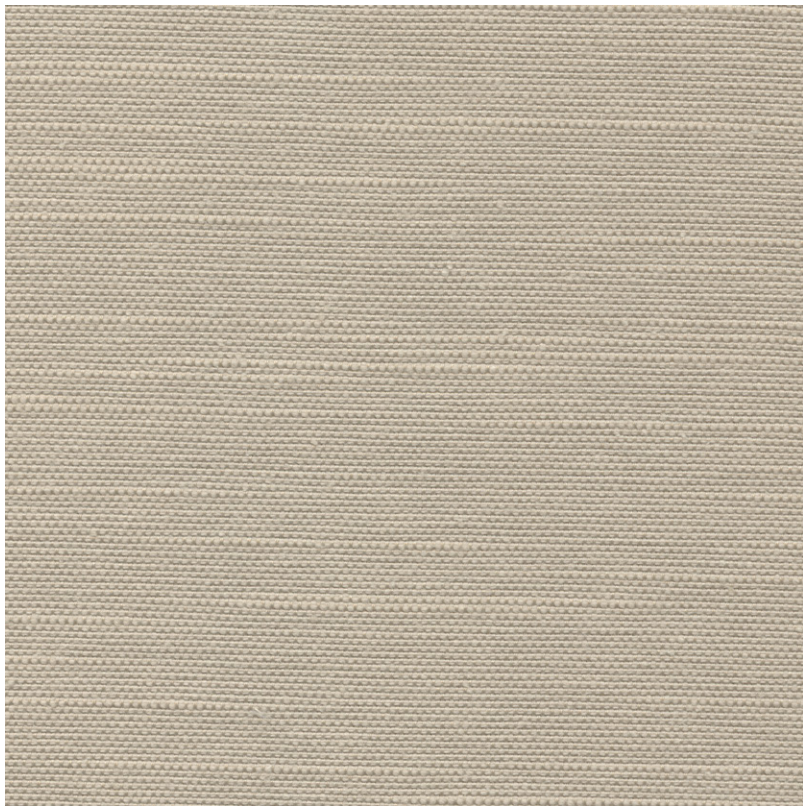
1363 - 29



1363 - 51



1363 - 62



SUITABLE FOR: Drapery & Soft Upholstery  

COMPOSITION: 74% Cotton, 26% Poly

WIDTH: 140CM (+/- 5CM)

WEIGHT: 242GSM

VERTICAL DESIGN REPEAT: Nil

HORIZONTAL DESIGN REPEAT: Nil

WASHING INSTRUCTIONS: (Dry Clean Only)     

*Colour shades may tend to vary between different dye-lots & production batches

*Due to variations in computer screens, images presented are not 100% similar to actual fabrics

1363 - 06

AVAILABLE COLOURS



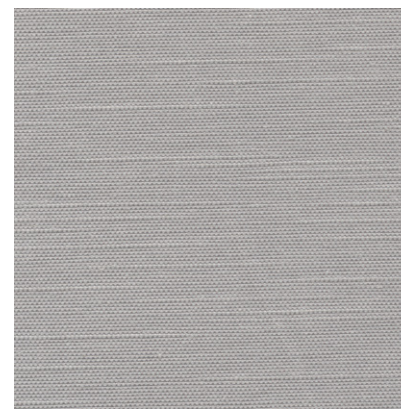
1363 - 28



1363 - 33



1363 - 52



1363 - 63



1363 - 66



SUITABLE FOR: Drapery & Soft Upholstery  

COMPOSITION: 45% Cotton, 39% Poly, 8% Linen, 8% Viscose

WIDTH: 140CM (+/- 5CM)

WEIGHT: 288GSM

VERTICAL DESIGN REPEAT: Nil

HORIZONTAL DESIGN REPEAT: Nil

WASHING INSTRUCTIONS: (Dry Clean Only)     

*Colour shades may tend to vary between different dye-lots & production batches

*Due to variations in computer screens, images presented are not 100% similar to actual fabrics

1363 - 07

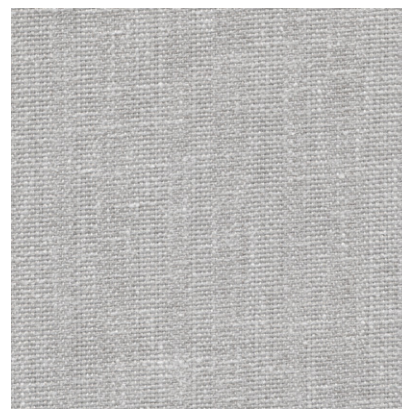
AVAILABLE COLOURS



1363 - 21



1363 - 48



1363 - 60



1363 - 67



SUITABLE FOR: Drapery & Soft Upholstery  

COMPOSITION: 86% Poly, 14% Cotton

WIDTH: 140CM (+/- 5CM)

WEIGHT: 241GSM

VERTICAL DESIGN REPEAT: Nil

HORIZONTAL DESIGN REPEAT: Nil

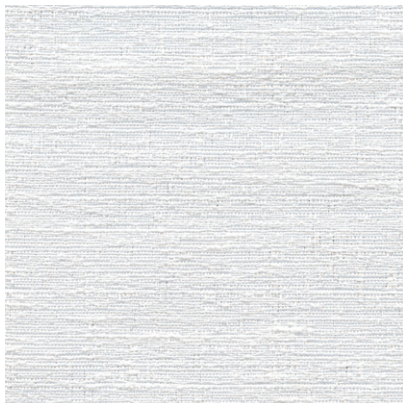
WASHING INSTRUCTIONS: (Dry Clean Only)     

*Colour shades may tend to vary between different dye-lots & production batches

*Due to variations in computer screens, images presented are not 100% similar to actual fabrics

1363 - 08

AVAILABLE COLOURS



1363 - 16



1363 - 30



1363 - 42



1363 - 55



1363 - 69



SUITABLE FOR: Drapery & Soft Upholstery  

COMPOSITION: 70% Poly, 30% Cotton

WIDTH: 140CM (+/- 5CM)

WEIGHT: 248GSM

VERTICAL DESIGN REPEAT: Nil

HORIZONTAL DESIGN REPEAT: Nil

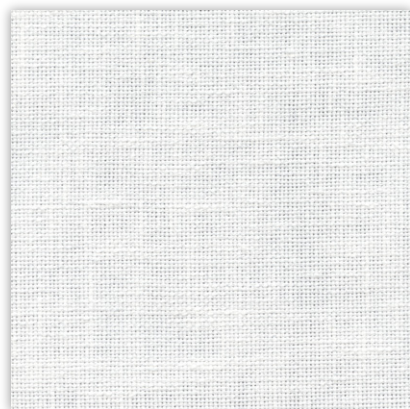
WASHING INSTRUCTIONS: (Dry Clean Only)     

*Colour shades may tend to vary between different dye-lots & production batches

*Due to variations in computer screens, images presented are not 100% similar to actual fabrics

1363 - 09

AVAILABLE COLOURS



1363 - 26



1363 - 40



1363 - 49



1363 - 64





SUITABLE FOR: Drapery & Soft Upholstery  

COMPOSITION: 74% Cotton, 26% Poly

WIDTH: 140CM (+/- 5CM)

WEIGHT: 242GSM

VERTICAL DESIGN REPEAT: Nil

HORIZONTAL DESIGN REPEAT: Nil

WASHING INSTRUCTIONS: (Dry Clean Only)     

*Colour shades may tend to vary between different dye-lots & production batches

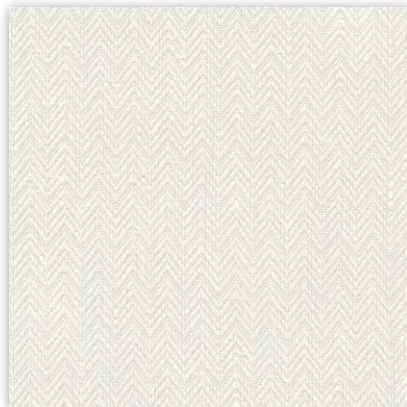
*Due to variations in computer screens, images presented are not 100% similar to actual fabrics

1363 - 10

AVAILABLE COLOURS



1363 - 23



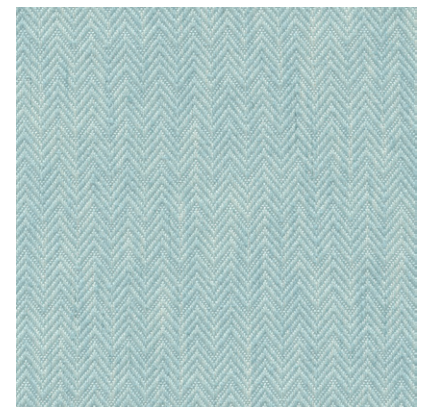
1363 - 34



1363 - 39



1363 - 41



1363 - 68



SUITABLE FOR: Drapery & Soft Upholstery  

COMPOSITION: 64% Poly, 28% Cotton, 8% Linen

WIDTH: 140CM (+/- 5CM)

WEIGHT: 319GSM

VERTICAL DESIGN REPEAT: Nil

HORIZONTAL DESIGN REPEAT: Nil

WASHING INSTRUCTIONS: (Dry Clean Only)     

*Colour shades may tend to vary between different dye-lots & production batches

*Due to variations in computer screens, images presented are not 100% similar to actual fabrics

1363 - 11

AVAILABLE COLOURS



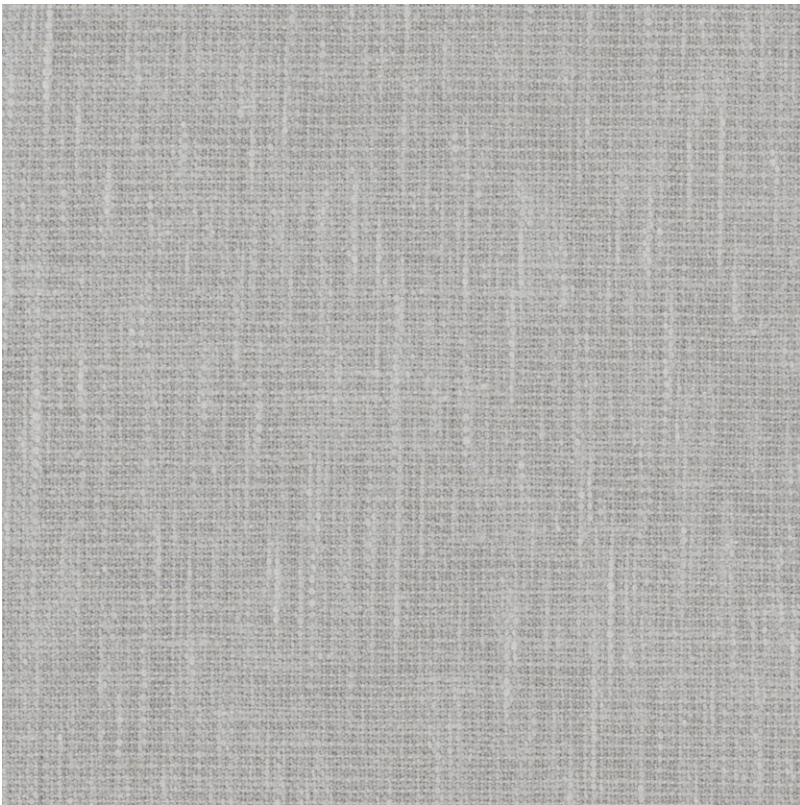
1363 - 17



1363 - 37



1363 - 50



SUITABLE FOR: Drapery & Soft Upholstery  

COMPOSITION: 40% Poly, 40% Cotton, 11% Linen, 9% Lyocell

WIDTH: 140CM (+/- 5CM)

WEIGHT: 217GSM

VERTICAL DESIGN REPEAT: Nil

HORIZONTAL DESIGN REPEAT: Nil

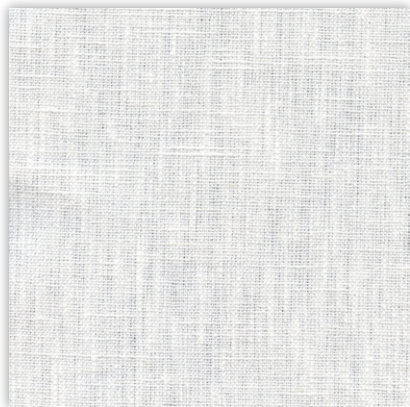
WASHING INSTRUCTIONS: (Dry Clean Only)     

*Colour shades may tend to vary between different dye-lots & production batches

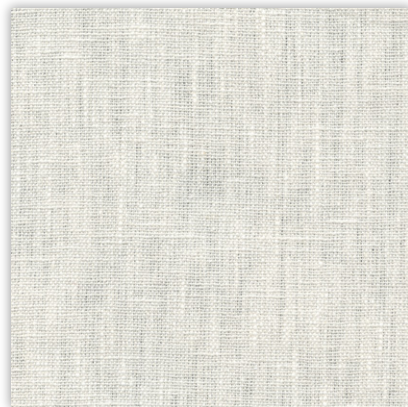
*Due to variations in computer screens, images presented are not 100% similar to actual fabrics

1363 - 12

AVAILABLE COLOURS



1363 - 18



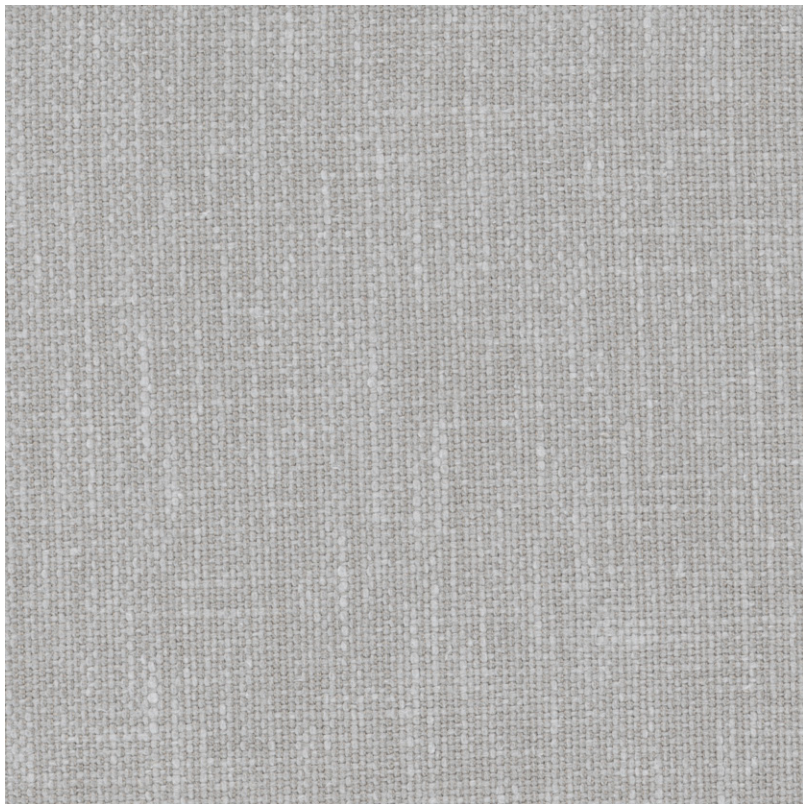
1363 - 36



1363 - 54



1363 - 57



SUITABLE FOR: Drapery & Soft Upholstery  

COMPOSITION: 58% Poly, 42% Cotton

WIDTH: 140CM (+/- 5CM)

WEIGHT: 302GSM

VERTICAL DESIGN REPEAT: Nil

HORIZONTAL DESIGN REPEAT: Nil

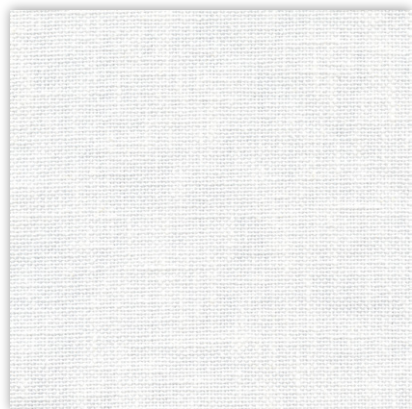
WASHING INSTRUCTIONS: (Dry Clean Only)      

*Colour shades may tend to vary between different dye-lots & production batches

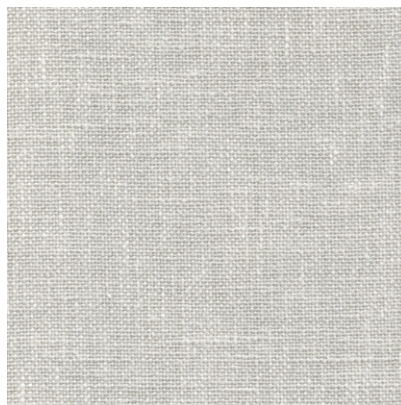
*Due to variations in computer screens, images presented are not 100% similar to actual fabrics

1363 - 13

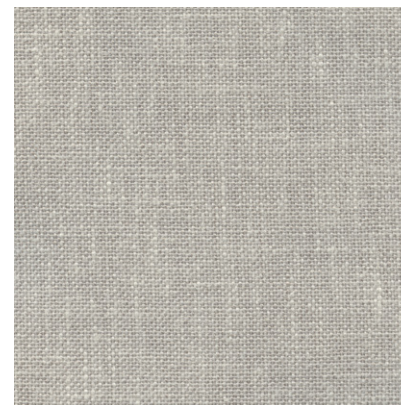
AVAILABLE COLOURS



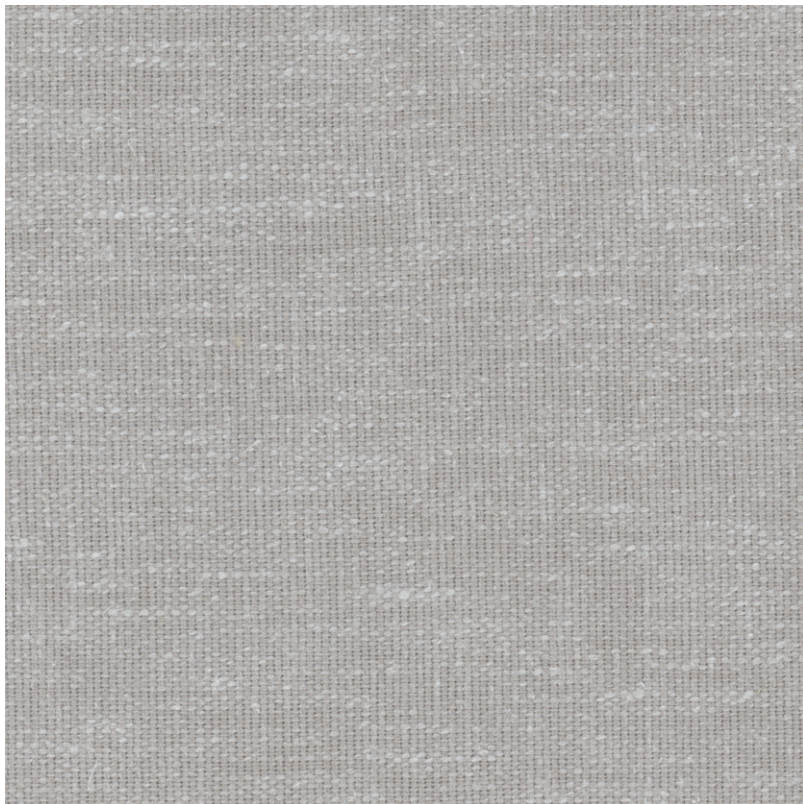
1363 - 22



1363 - 47



1363 - 56



SUITABLE FOR: Drapery & Soft Upholstery  

COMPOSITION: 68% Poly, 25% Cotton, 7% Linen

WIDTH: 140CM (+/- 5CM)

WEIGHT: 238GSM

VERTICAL DESIGN REPEAT: Nil

HORIZONTAL DESIGN REPEAT: Nil

WASHING INSTRUCTIONS: (Dry Clean Only)     

*Colour shades may tend to vary between different dye-lots & production batches

*Due to variations in computer screens, images presented are not 100% similar to actual fabrics

1363 - 14

AVAILABLE COLOURS



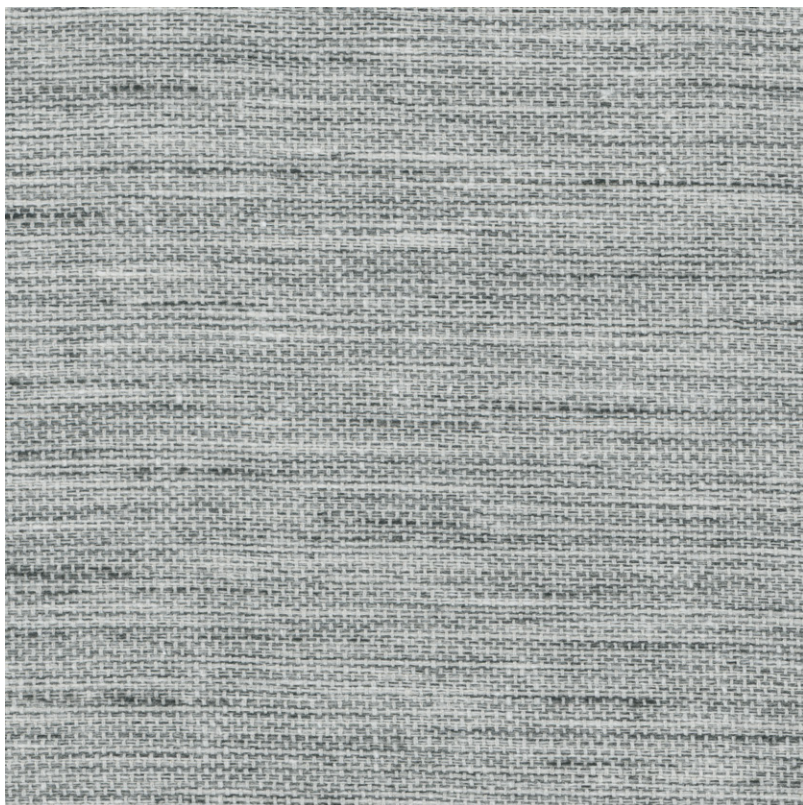
1363 - 24



1363 - 45



1363 - 53



SUITABLE FOR: Drapery & Soft Upholstery  

COMPOSITION: 65% Poly, 35% Cotton

WIDTH: 140CM (+/- 5CM)

WEIGHT: 212GSM

VERTICAL DESIGN REPEAT: Nil

HORIZONTAL DESIGN REPEAT: Nil

WASHING INSTRUCTIONS: (Dry Clean Only)      

*Colour shades may tend to vary between different dye-lots & production batches

*Due to variations in computer screens, images presented are not 100% similar to actual fabrics

1363 - 15

AVAILABLE COLOURS



1363 - 59



1363 - 65

U

ULTRA FABRICS

EST. 1990

ULTRA FURNISHING FABRICS FZCO

Unit 262. Dubai Textile City
Al Warsan 1, Dubai, UAE

Follow our socials
ultrafabrics.ae



www.ultrafabrics.ae