



# BRAILLE (THEMES IV) CAT NO. 1356

For the muted decor that tacitly shows class, Braille brings us dry textures for drapery and cushions. These fabrics dyed an earthen brown, denim, and smoke, are peppered with wide wefts and sodium slubs. Use these plains to give your furnishings a natural confidence.





**SUITABLE FOR:** Drapery & Soft Upholstery  

**COMPOSITION:** 40% Poly, 60% Cotton

**WIDTH:** 140CM (+/-5CM)

**WEIGHT:** 290GSM

**VERTICAL DESIGN REPEAT:** Nil

**HORIZONTAL DESIGN REPEAT:** Nil

**WASHING INSTRUCTIONS:** (Dry Clean Only)     

\*Colour shades may tend to vary between different dye-lots & production batches

\*Due to variations in computer screens, images presented are not 100% similar to actual fabrics

1356 - 01

AVAILABLE COLOURS



1356 - 23



1356 - 31



1356 - 57



1356 - 62





**SUITABLE FOR:** Drapery & Soft Upholstery  

**COMPOSITION:** 45% Poly, 55% Cotton

**WIDTH:** 140CM (+/-5CM)

**WEIGHT:** 320GSM

**VERTICAL DESIGN REPEAT:** Nil

**HORIZONTAL DESIGN REPEAT:** Nil

**WASHING INSTRUCTIONS:** (Dry Clean Only)      

\*Colour shades may tend to vary between different dye-lots & production batches

\*Due to variations in computer screens, images presented are not 100% similar to actual fabrics

1356 - 02

AVAILABLE COLOURS



1356 - 20



1356 - 30



1356 - 49



1356 - 64





**SUITABLE FOR:** Drapery & Soft Upholstery  

**COMPOSITION:** 62% Poly, 38% Cotton

**WIDTH:** 140CM (+/-5CM)

**WEIGHT:** 320GSM

**VERTICAL DESIGN REPEAT:** Nil

**HORIZONTAL DESIGN REPEAT:** Nil

**WASHING INSTRUCTIONS:** (Dry Clean Only)      

\*Colour shades may tend to vary between different dye-lots & production batches

\*Due to variations in computer screens, images presented are not 100% similar to actual fabrics

1356 - 03

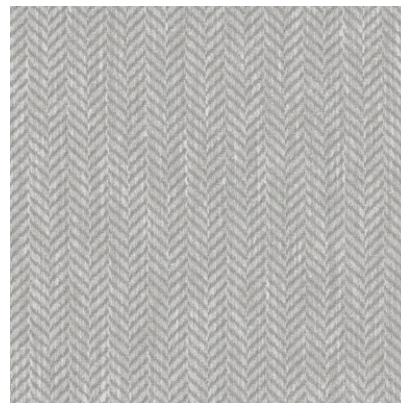
AVAILABLE COLOURS



1356 - 22



1356 - 39



1356 - 45



1356 - 55

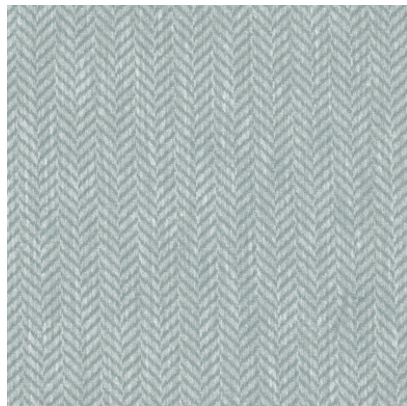


1356 - 59





1356 - 60



1356 - 65



1356 - 69



1356 - 72







**SUITABLE FOR:** Drapery & Soft Upholstery  

**COMPOSITION:** 49% Poly, 51% Cotton

**WIDTH:** 140CM (+/-5CM)

**WEIGHT:** 230GSM

**VERTICAL DESIGN REPEAT:** Nil

**HORIZONTAL DESIGN REPEAT:** Nil

**WASHING INSTRUCTIONS:** (Dry Clean Only)     

\*Colour shades may tend to vary between different dye-lots & production batches

\*Due to variations in computer screens, images presented are not 100% similar to actual fabrics

1356 - 04

AVAILABLE COLOURS



1356 - 13



1356 - 18



1356 - 26



1356 - 28

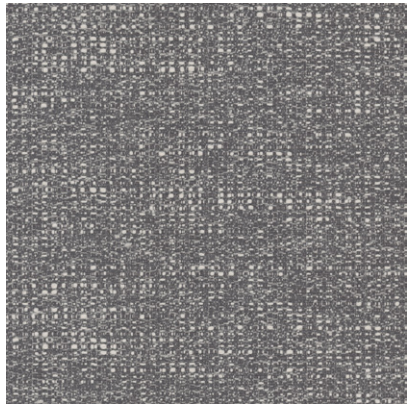




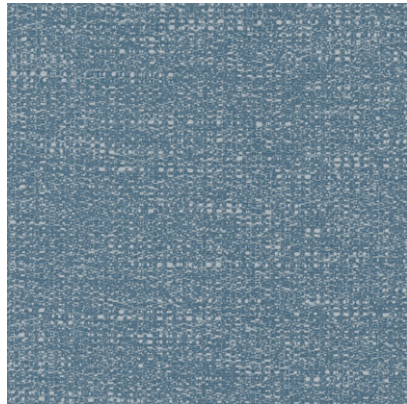
1356 - 32



1356 - 41



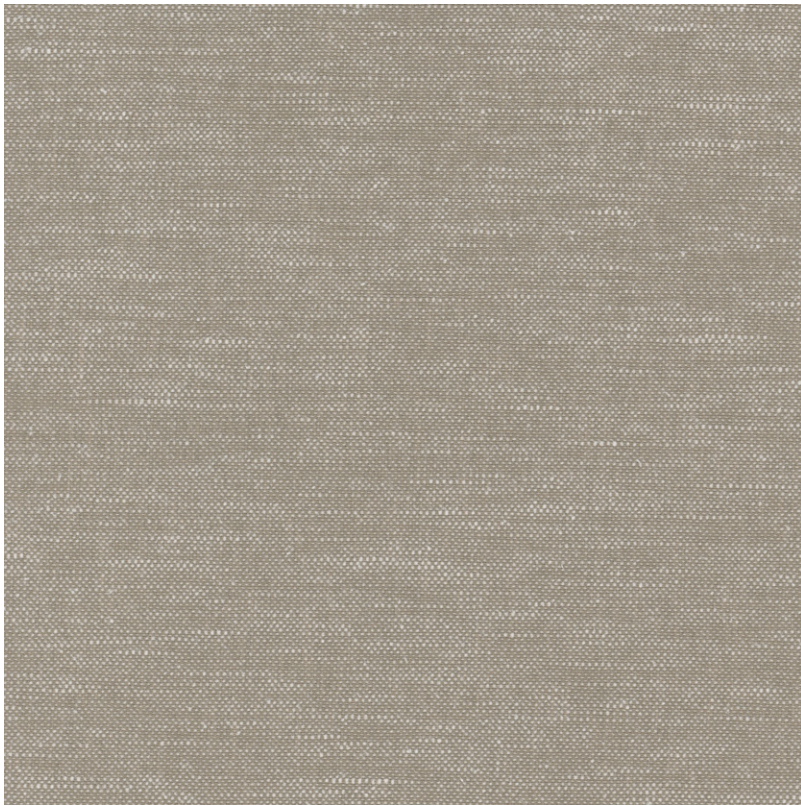
1356 - 54



1356 - 66







**SUITABLE FOR:** Drapery & Soft Upholstery  

**COMPOSITION:** 75% Poly, 25% Cotton

**WIDTH:** 140CM (+/-5CM)

**WEIGHT:** 225GSM

**VERTICAL DESIGN REPEAT:** Nil

**HORIZONTAL DESIGN REPEAT:** Nil

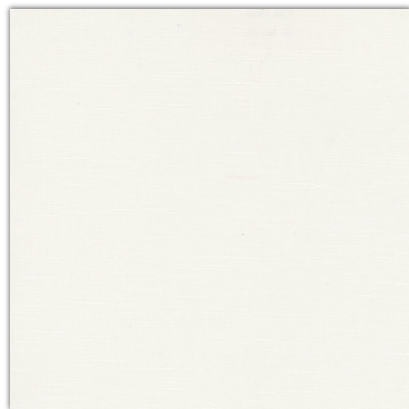
**WASHING INSTRUCTIONS:** (Dry Clean Only)     

\*Colour shades may tend to vary between different dye-lots & production batches

\*Due to variations in computer screens, images presented are not 100% similar to actual fabrics

1356 - 05

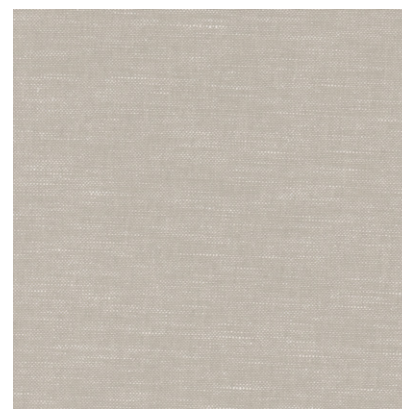
AVAILABLE COLOURS



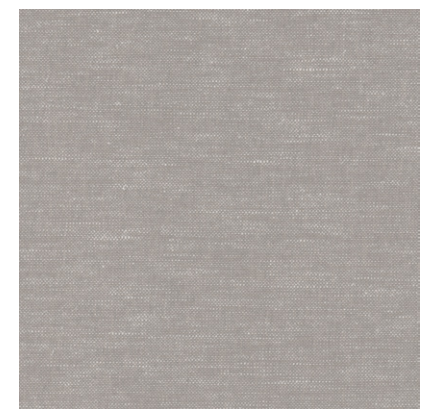
1356 - 15



1356 - 25

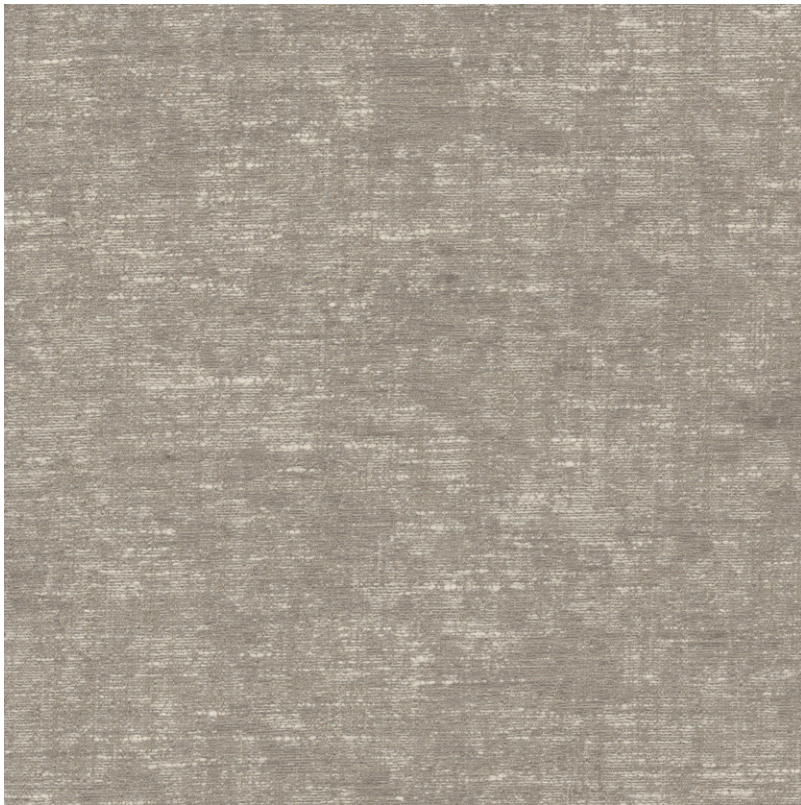


1356 - 36



1356 - 42





**SUITABLE FOR:** Drapery & Soft Upholstery  

**COMPOSITION:** 5% Poly, 15% Cotton

**WIDTH:** 140CM (+/-5CM)

**WEIGHT:** 195GSM

**VERTICAL DESIGN REPEAT:** Nil

**HORIZONTAL DESIGN REPEAT:** Nil

**WASHING INSTRUCTIONS:** (Dry Clean Only)      

\*Colour shades may tend to vary between different dye-lots & production batches

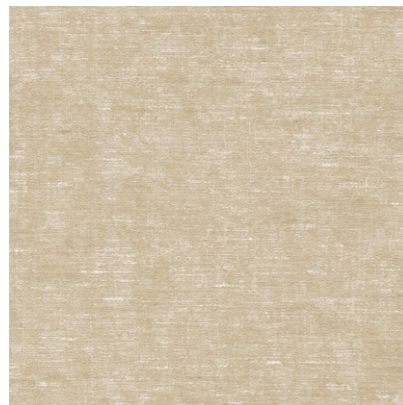
\*Due to variations in computer screens, images presented are not 100% similar to actual fabrics

1356 - 06

AVAILABLE COLOURS



1356 - 21



1356 - 29

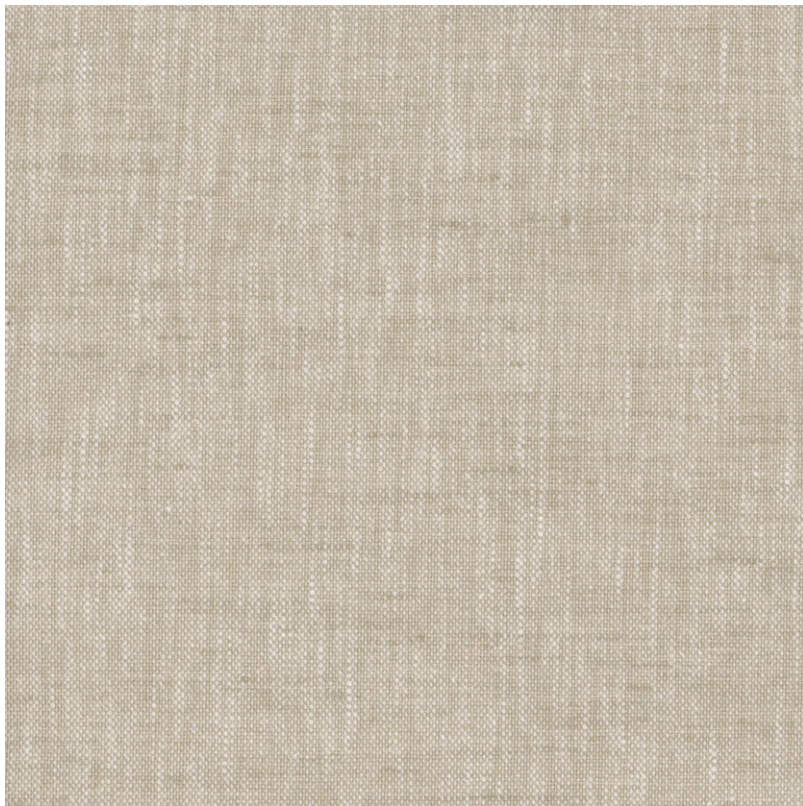


1356 - 33



1356 - 43





**SUITABLE FOR:** Drapery & Soft Upholstery  

**COMPOSITION:** 75% Poly, 25% Cotton

**WIDTH:** 140CM (+/-5CM)

**WEIGHT:** 225GSM

**VERTICAL DESIGN REPEAT:** Nil

**HORIZONTAL DESIGN REPEAT:** Nil

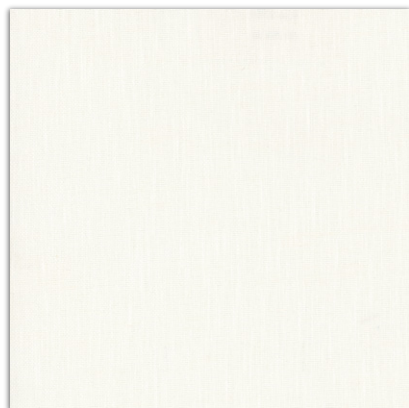
**WASHING INSTRUCTIONS:** (Dry Clean Only)      

\*Colour shades may tend to vary between different dye-lots & production batches

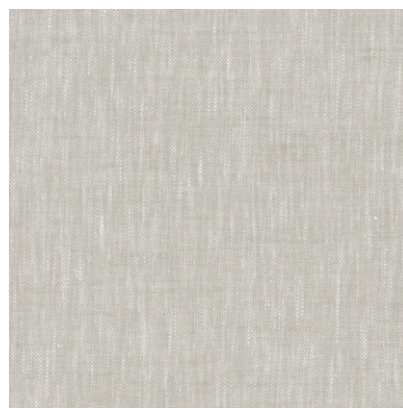
\*Due to variations in computer screens, images presented are not 100% similar to actual fabrics

1356 - 07

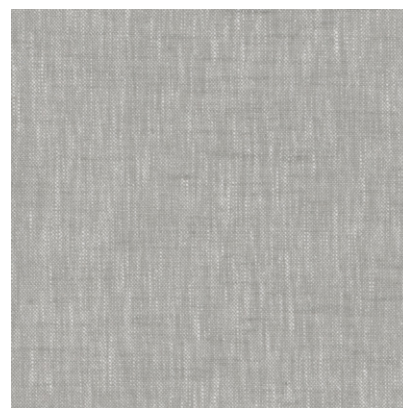
AVAILABLE COLOURS



1356 - 16



1356 - 40



1356 - 44



1356 - 51





**SUITABLE FOR:** Drapery & Soft Upholstery  

**COMPOSITION:** 62% Poly, 38% Cotton

**WIDTH:** 140CM (+/-5CM)

**WEIGHT:** 285GSM

**VERTICAL DESIGN REPEAT:** Nil

**HORIZONTAL DESIGN REPEAT:** Nil

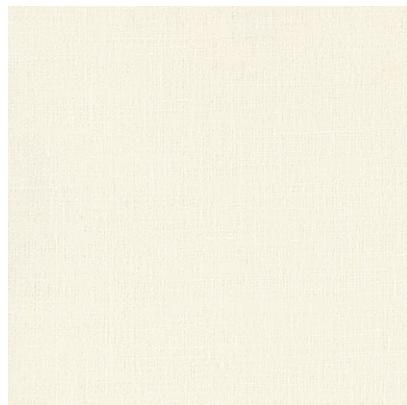
**WASHING INSTRUCTIONS:** (Dry Clean Only)      

\*Colour shades may tend to vary between different dye-lots & production batches

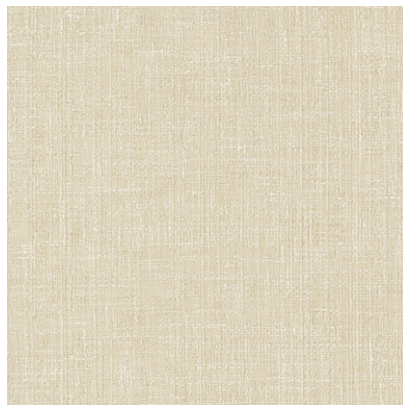
\*Due to variations in computer screens, images presented are not 100% similar to actual fabrics

1356 - 08

AVAILABLE COLOURS



1356 - 17



1356 - 19

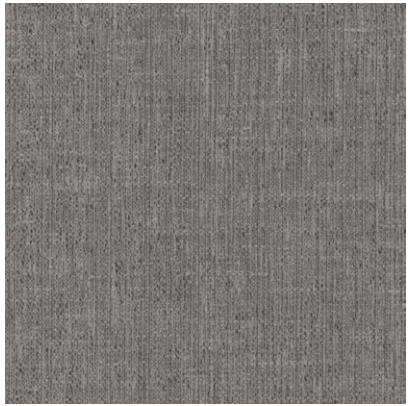


1356 - 34

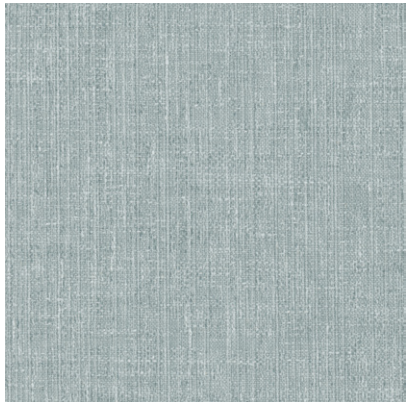


1356 - 46





1356 - 52



1356 - 63







**SUITABLE FOR:** Drapery & Soft Upholstery  

**COMPOSITION:** Polyester Rayon Natural Fibre

**WIDTH:** 140CM (+/-5CM)

**WEIGHT:** 285GSM

**VERTICAL DESIGN REPEAT:** Nil

**HORIZONTAL DESIGN REPEAT:** Nil

**WASHING INSTRUCTIONS:** (Dry Clean Only)     

\*Colour shades may tend to vary between different dye-lots & production batches

\*Due to variations in computer screens, images presented are not 100% similar to actual fabrics

1356 - 09

AVAILABLE COLOURS



1356 - 35



1356 - 48



1356 - 56



1356 - 70



1356 - 73





**SUITABLE FOR:** Drapery & Soft Upholstery  

**COMPOSITION:** 81% Poly, 19% Cotton

**WIDTH:** 140CM (+/-5CM)

**WEIGHT:** 260GSM

**VERTICAL DESIGN REPEAT:** Nil

**HORIZONTAL DESIGN REPEAT:** Nil

**WASHING INSTRUCTIONS:** (Dry Clean Only)     

\*Colour shades may tend to vary between different dye-lots & production batches

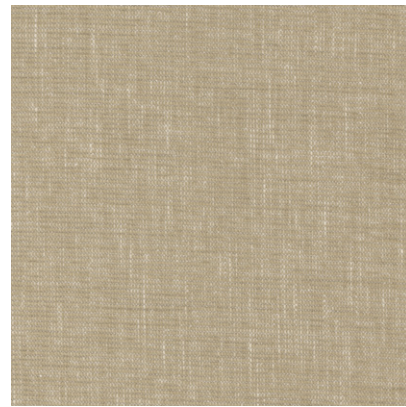
\*Due to variations in computer screens, images presented are not 100% similar to actual fabrics

1356 - 10

AVAILABLE COLOURS



1356 - 14



1356 - 27

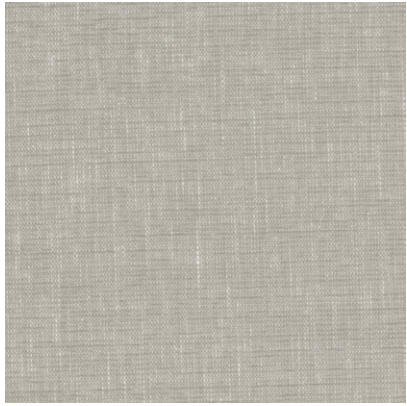


1356 - 37

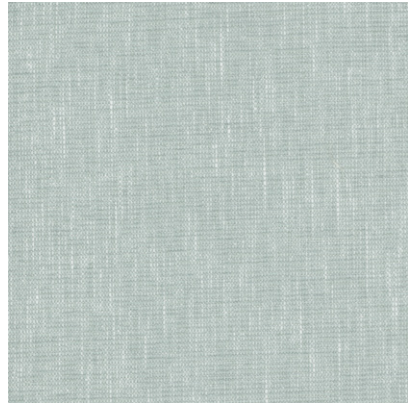


1356 - 53

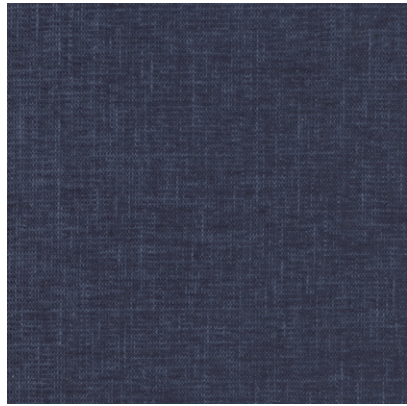




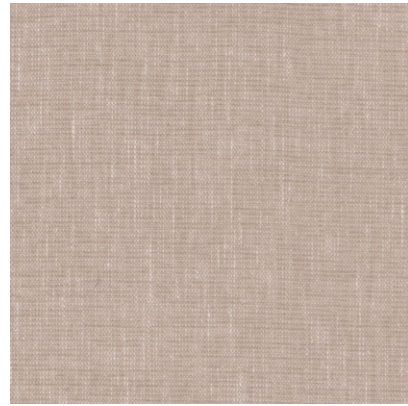
1356 - 58



1356 - 61



1356 - 71



1356 - 75







**SUITABLE FOR:** Drapery & Soft Upholstery  

**COMPOSITION:** Polyester Rayon Natural Fibre

**WIDTH:** 140CM (+/-5CM)

**WEIGHT:** 230GSM

**VERTICAL DESIGN REPEAT:** Nil

**HORIZONTAL DESIGN REPEAT:** Nil

**WASHING INSTRUCTIONS:** (Dry Clean Only)     

\*Colour shades may tend to vary between different dye-lots & production batches

\*Due to variations in computer screens, images presented are not 100% similar to actual fabrics

1356 - 11

AVAILABLE COLOURS



1356 - 38



1356 - 47



1356 - 67





**SUITABLE FOR:** Drapery & Soft Upholstery  

**COMPOSITION:** Polyester Rayon Natural Fibre

**WIDTH:** 140CM (+/-5CM)

**WEIGHT:** 3005GSM

**VERTICAL DESIGN REPEAT:** Nil

**HORIZONTAL DESIGN REPEAT:** Nil

**WASHING INSTRUCTIONS:** (Dry Clean Only)      

\*Colour shades may tend to vary between different dye-lots & production batches

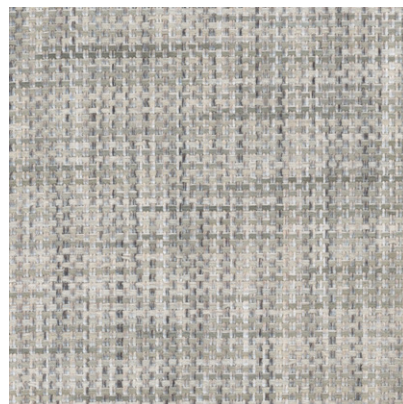
\*Due to variations in computer screens, images presented are not 100% similar to actual fabrics

1356 - 12

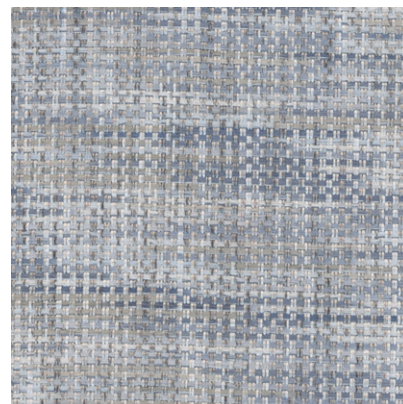
AVAILABLE COLOURS



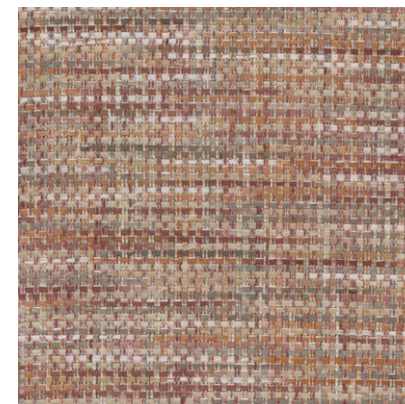
1356 - 24



1356 - 50



1356 - 68



1356 - 74



# *U*

ULTRA FABRICS

EST. 1990

ULTRA FURNISHING FABRICS FZCO

Unit 262. Dubai Textile City  
Al Warsan 1, Dubai, UAE

Follow our socials  
[ultrafabrics.ae](http://ultrafabrics.ae)



[www.ultrafabrics.ae](http://www.ultrafabrics.ae)