



ERA

CAT NO. 1355

In 15 unique shades & patterns, Era brings us jacquards that meld culture with abstraction. In neutral tones of gold, pearl, and pista, you'll find motifs of damask, geometry, and prismatic crystal. These fabrics for drapery & cushions capture a classic aesthete within sophistication.



SUITABLE FOR: Drapery & Soft Upholstery  

COMPOSITION: 92% Poly, 8% Cotton

WIDTH: 140CM (+/- 5CM)

WEIGHT: 265GSM

VERTICAL DESIGN REPEAT: 5.08CM

HORIZONTAL DESIGN REPEAT: 4.92CM

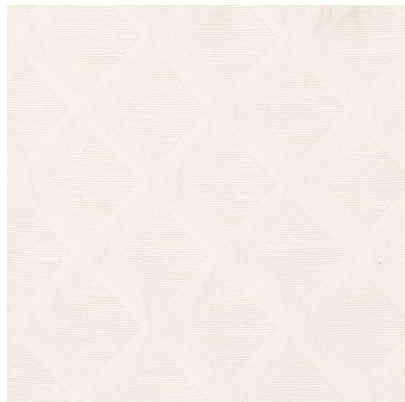
WASHING INSTRUCTIONS: (Dry Clean Only)     

*Colour shades may tend to vary between different dye-lots & production batches

*Due to variations in computer screens, images presented are not 100% similar to actual fabrics

1355 - 01

AVAILABLE COLOURS



1355 - 16



1355 - 25



1355 - 58



SUITABLE FOR: Drapery & Soft Upholstery  

COMPOSITION: Polyester Rayon Natural Fiber

WIDTH: 140CM (+/- 5CM)

WEIGHT: 180GSM

VERTICAL DESIGN REPEAT: 15CM

HORIZONTAL DESIGN REPEAT: 8.8CM

WASHING INSTRUCTIONS: (Dry Clean Only)     

*Colour shades may tend to vary between different dye-lots & production batches

*Due to variations in computer screens, images presented are not 100% similar to actual fabrics

1355 - 02

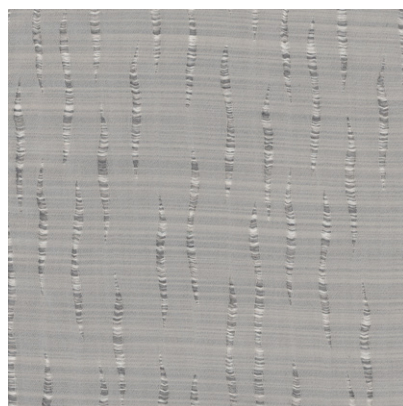
AVAILABLE COLOURS



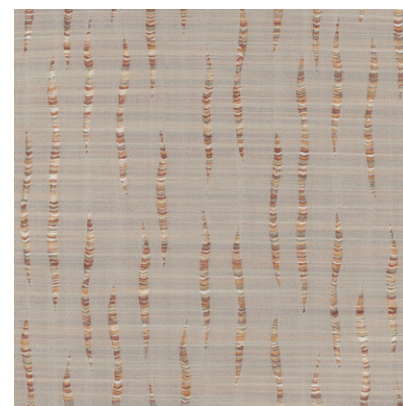
1355 - 24



1355 - 32



1355 - 49



1355 - 67



SUITABLE FOR: Drapery & Soft Upholstery  

COMPOSITION: 78% Poly, 22% Cotton

WIDTH: 140CM (+/- 5CM)

WEIGHT: 260GSM

VERTICAL DESIGN REPEAT: 38.5CM

HORIZONTAL DESIGN REPEAT: 34.2CM

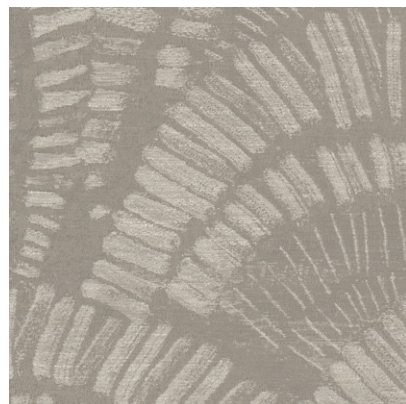
WASHING INSTRUCTIONS: (Dry Clean Only)     

*Colour shades may tend to vary between different dye-lots & production batches

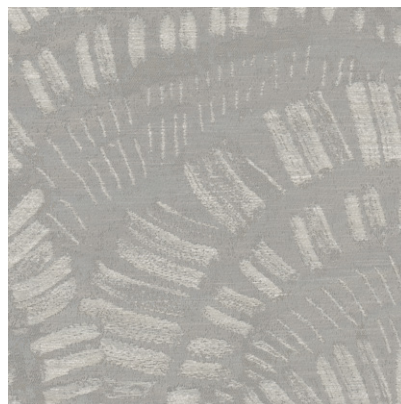
*Due to variations in computer screens, images presented are not 100% similar to actual fabrics

1355 - 03

AVAILABLE COLOURS



1355 - 34



1355 - 46



SUITABLE FOR: Drapery & Soft Upholstery  

COMPOSITION: Polyester Rayon Natural Fiber

WIDTH: 140CM (+/- 5CM)

WEIGHT: 215GSM

VERTICAL DESIGN REPEAT: Nil

HORIZONTAL DESIGN REPEAT: Nil

WASHING INSTRUCTIONS: (Dry Clean Only)     

*Colour shades may tend to vary between different dye-lots & production batches

*Due to variations in computer screens, images presented are not 100% similar to actual fabrics

1355 - 04

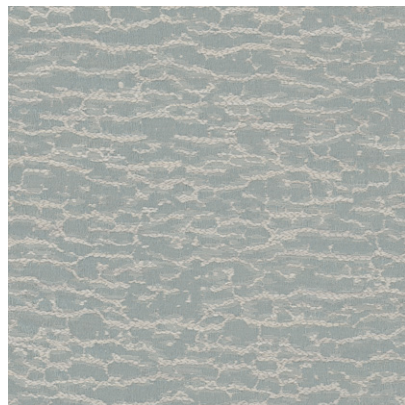
AVAILABLE COLOURS



1355 - 23



1355 - 45



1355 - 59



1355 - 64



SUITABLE FOR: Drapery & Soft Upholstery  

COMPOSITION: 81% Poly, 19% Cotton

WIDTH: 140CM (+/- 5CM)

WEIGHT: 280GSM

VERTICAL DESIGN REPEAT: 28.5CM

HORIZONTAL DESIGN REPEAT: 35CM

WASHING INSTRUCTIONS: (Dry Clean Only)     

*Colour shades may tend to vary between different dye-lots & production batches

*Due to variations in computer screens, images presented are not 100% similar to actual fabrics

1355 - 05

AVAILABLE COLOURS



1355 - 48



1355 - 61



SUITABLE FOR: Drapery & Soft Upholstery  

COMPOSITION: Polyester Rayon Natural Fiber

WIDTH: 140CM (+/- 5CM)

WEIGHT: 235GSM

VERTICAL DESIGN REPEAT: 3.5CM

HORIZONTAL DESIGN REPEAT: 2.2CM

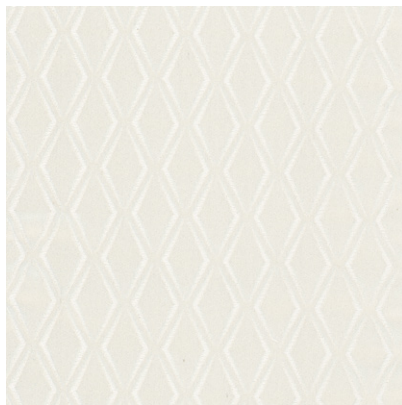
WASHING INSTRUCTIONS: (Dry Clean Only)     

*Colour shades may tend to vary between different dye-lots & production batches

*Due to variations in computer screens, images presented are not 100% similar to actual fabrics

1355 - 06

AVAILABLE COLOURS



1355 - 18



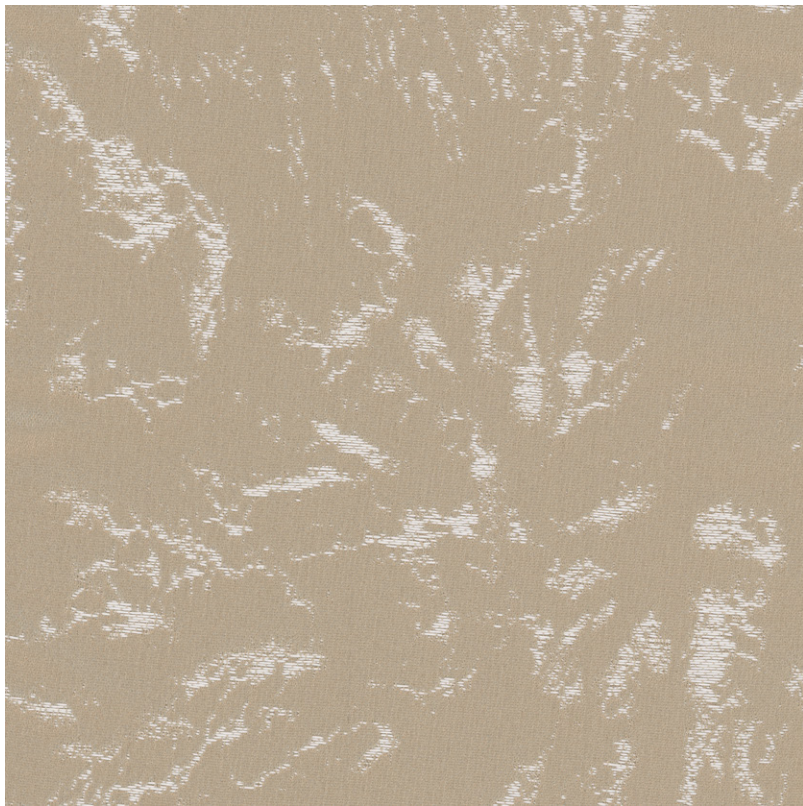
1355 - 41



1355 - 53



1355 - 55



SUITABLE FOR: Drapery & Soft Upholstery  

COMPOSITION: Polyester Rayon Natural Fiber

WIDTH: 140CM (+/- 5CM)

WEIGHT: 250GSM

VERTICAL DESIGN REPEAT: 38CM

HORIZONTAL DESIGN REPEAT: 34.54CM

WASHING INSTRUCTIONS: (Dry Clean Only)     

*Colour shades may tend to vary between different dye-lots & production batches

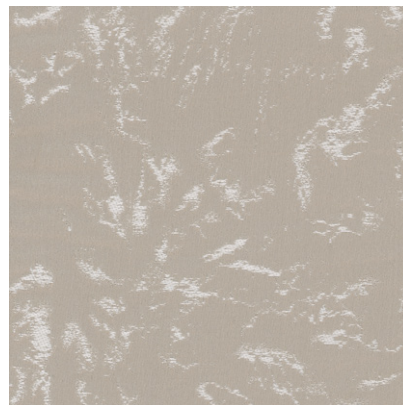
*Due to variations in computer screens, images presented are not 100% similar to actual fabrics

1355 - 07

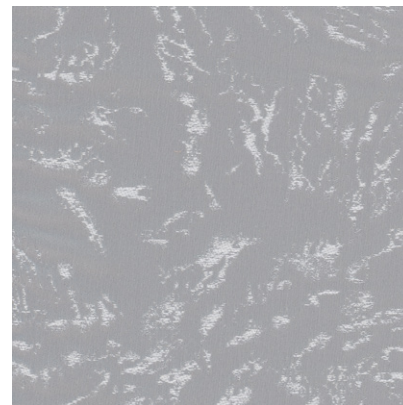
AVAILABLE COLOURS



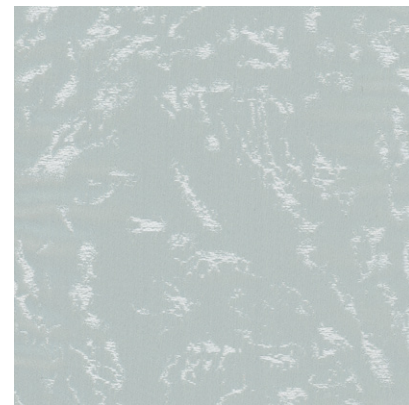
1355 - 17



1355 - 42



1355 - 54



1355 - 56



SUITABLE FOR: Drapery & Soft Upholstery  

COMPOSITION: 76% Poly, 24% Cotton

WIDTH: 140CM (+/- 5CM)

WEIGHT: 200GSM

VERTICAL DESIGN REPEAT: 12.86CM

HORIZONTAL DESIGN REPEAT: 8.64CM

WASHING INSTRUCTIONS: (Dry Clean Only)     

*Colour shades may tend to vary between different dye-lots & production batches

*Due to variations in computer screens, images presented are not 100% similar to actual fabrics

1355 - 08

AVAILABLE COLOURS



1355 - 33



1355 - 43



1355 - 57



1355 - 62



SUITABLE FOR: Drapery & Soft Upholstery  

COMPOSITION: Polyester Rayon Natural Fiber

WIDTH: 140CM (+/- 5CM)

WEIGHT: 185GSM

VERTICAL DESIGN REPEAT: Nil

HORIZONTAL DESIGN REPEAT: Nil

WASHING INSTRUCTIONS: (Dry Clean Only)     

*Colour shades may tend to vary between different dye-lots & production batches

*Due to variations in computer screens, images presented are not 100% similar to actual fabrics

1355 - 09

AVAILABLE COLOURS



1355 - 47



1355 - 51



1355 - 10

SUITABLE FOR: Drapery & Soft Upholstery  

COMPOSITION: Polyester Rayon Natural Fiber

WIDTH: 140CM (+/- 5CM)

WEIGHT: 240GSM

VERTICAL DESIGN REPEAT: 45CM

HORIZONTAL DESIGN REPEAT: 34.3CM

WASHING INSTRUCTIONS: (Dry Clean Only)     

*Colour shades may tend to vary between different dye-lots & production batches

*Due to variations in computer screens, images presented are not 100% similar to actual fabrics

AVAILABLE COLOURS



1355 - 30



1355 - 39



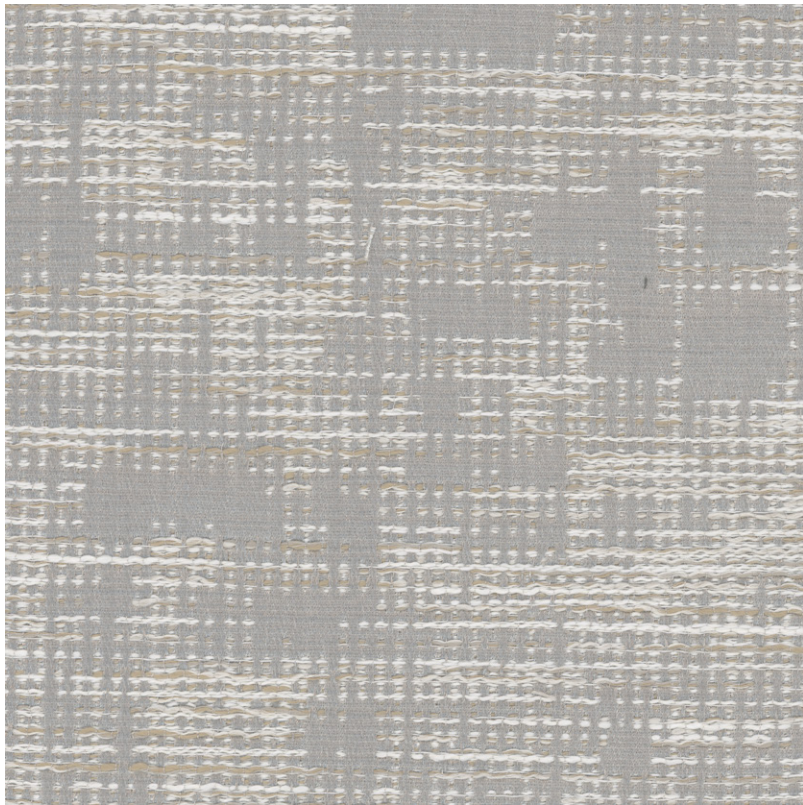
1355 - 44



1355 - 63



1355 - 68



SUITABLE FOR: Drapery & Soft Upholstery  

COMPOSITION: 85% Poly, 11% Cotton, 4% Viscose

WIDTH: 140CM (+/- 5CM)

WEIGHT: 375GSM

VERTICAL DESIGN REPEAT: 17.9CM

HORIZONTAL DESIGN REPEAT: 17.1CM

WASHING INSTRUCTIONS: (Dry Clean Only)     

*Colour shades may tend to vary between different dye-lots & production batches

*Due to variations in computer screens, images presented are not 100% similar to actual fabrics

1355 - 11

AVAILABLE COLOURS



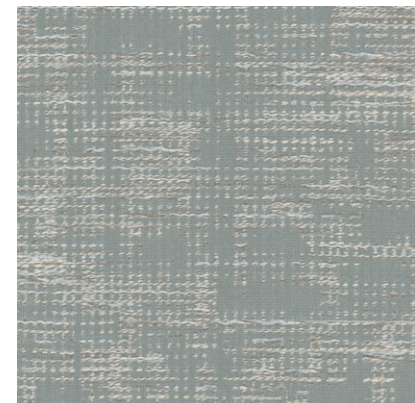
1355 - 26



1355 - 31



1355 - 40



1355 - 60



SUITABLE FOR: Drapery & Soft Upholstery  

COMPOSITION: 80% Poly, 20% Cotton

WIDTH: 140CM (+/- 5CM)

WEIGHT: 205GSM

VERTICAL DESIGN REPEAT: 68.5CM

HORIZONTAL DESIGN REPEAT: 35.6CM

WASHING INSTRUCTIONS: (Dry Clean Only)     

*Colour shades may tend to vary between different dye-lots & production batches

*Due to variations in computer screens, images presented are not 100% similar to actual fabrics

1355 - 12

AVAILABLE COLOURS



1355 - 21



1355 - 29



1355 - 35



SUITABLE FOR: Drapery & Soft Upholstery  

COMPOSITION: 92% Poly, 8% Cotton

WIDTH: 140CM (+/- 5CM)

WEIGHT: 225GSM

VERTICAL DESIGN REPEAT: 18.5CM

HORIZONTAL DESIGN REPEAT: 17.1CM

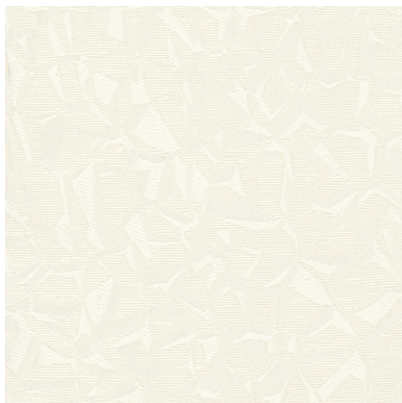
WASHING INSTRUCTIONS: (Dry Clean Only)     

*Colour shades may tend to vary between different dye-lots & production batches

*Due to variations in computer screens, images presented are not 100% similar to actual fabrics

1355 - 13

AVAILABLE COLOURS



1355 - 19



1355 - 20



1355 - 22



1355 - 38



SUITABLE FOR: Drapery & Soft Upholstery  

COMPOSITION: 63% Poly, 37% Cotton

WIDTH: 140CM (+/- 5CM)

WEIGHT: 210GSM

VERTICAL DESIGN REPEAT: Nil

HORIZONTAL DESIGN REPEAT: Nil

WASHING INSTRUCTIONS: (Dry Clean Only)     

*Colour shades may tend to vary between different dye-lots & production batches

*Due to variations in computer screens, images presented are not 100% similar to actual fabrics

1355 - 14

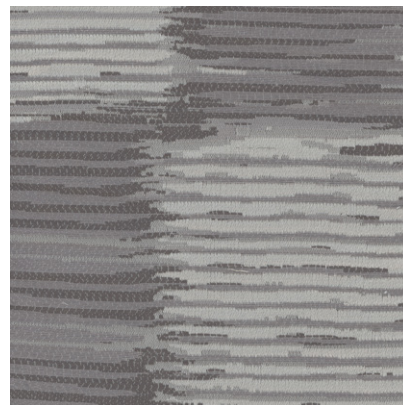
AVAILABLE COLOURS



1355 - 27



1355 - 36



1355 - 52



1355 - 66



SUITABLE FOR: Drapery & Soft Upholstery  

COMPOSITION: 75% Poly, 25% Cotton

WIDTH: 140CM (+/- 5CM)

WEIGHT: 230GSM

VERTICAL DESIGN REPEAT: 36CM

HORIZONTAL DESIGN REPEAT: 34.2CM

WASHING INSTRUCTIONS: (Dry Clean Only)     

*Colour shades may tend to vary between different dye-lots & production batches

*Due to variations in computer screens, images presented are not 100% similar to actual fabrics

1355 - 15

AVAILABLE COLOURS



1355 - 28



1355 - 37



1355 - 50



1355 - 65

U

ULTRA FABRICS

EST. 1990

ULTRA FURNISHING FABRICS FZCO

Unit 262. Dubai Textile City
Al Warsan 1, Dubai, UAE

Follow our socials
ultrafabrics.ae



www.ultrafabrics.ae