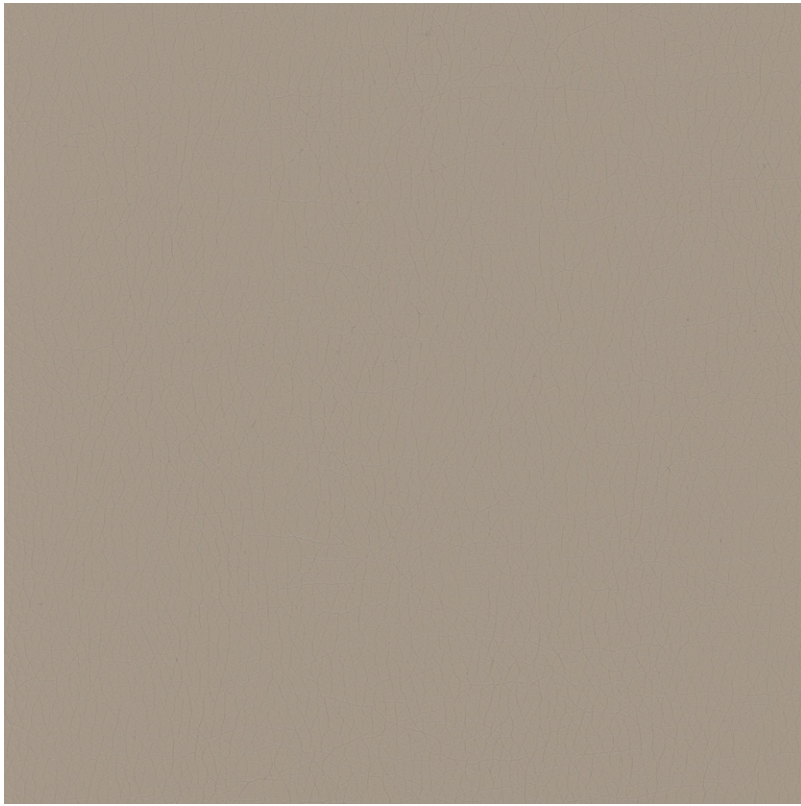




PASSIO

CAT NO. 1353

Create irresistibly textured furniture with Passio's faux leather upholstery fabrics. This collection of faux leather sofa fabrics represents a range of naturally scuffed & wrinkled pores for raw-style decor. From clouded suede dyed in cream, cork, and smoke, to distressed grains of garnet, indigo, and sunflower – Passio's fabrics will give your home the elusive air of rare musk.



SR NO - 01

SUITABLE FOR: Upholstery 

COMPOSITION: 74% PVC, 4% PU, 22% Poly

WIDTH: 140CM (+/- 5CM)

WEIGHT: 550GSM

MARTINDALE: 25,000 Rubs

WASHING INSTRUCTIONS: Clean with a damp cloth or sponge.



*Do not use solvent cleaning products / Wax polish or concentrated abrasives

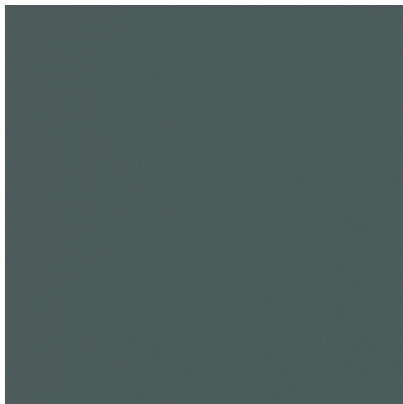
*Colour shades may tend to vary between different dye-lots & production batches

*Due to variations in computer screens, images presented are not 100% similar to actual fabrics

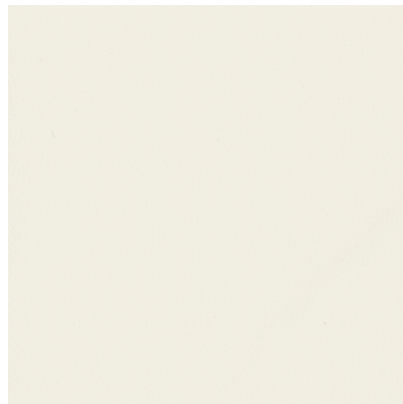
AVAILABLE COLOURS



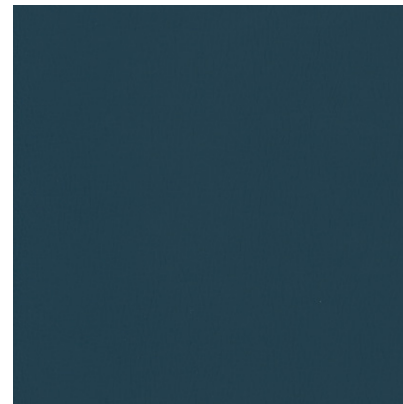
SR NO - 02



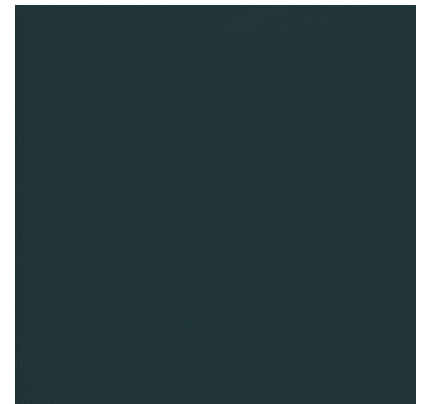
SR NO - 03



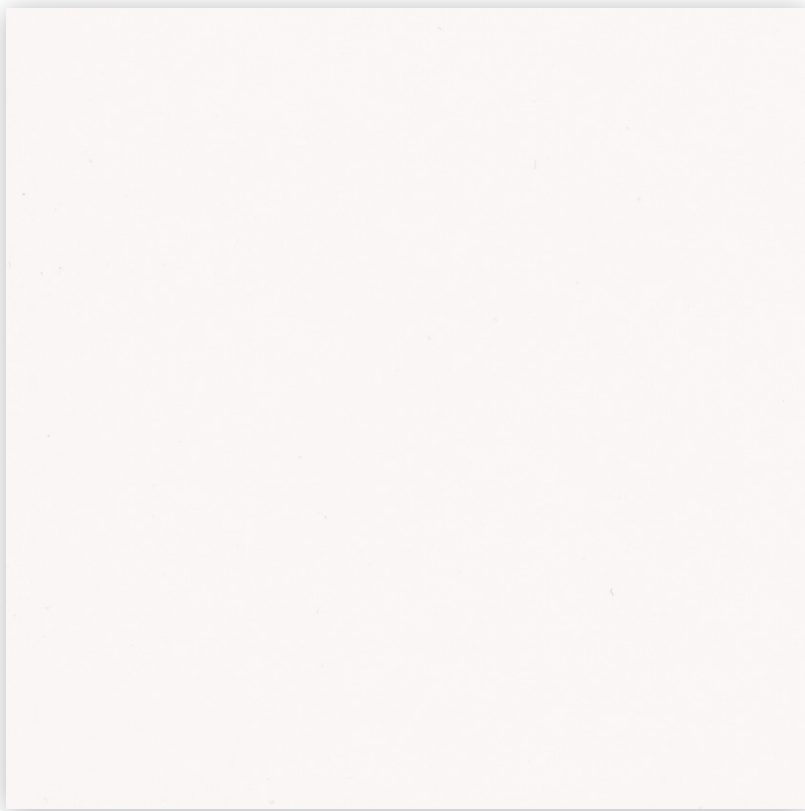
SR NO - 04



SR NO - 05



SR NO - 05



SR NO - 07

SUITABLE FOR: Upholstery 

COMPOSITION: 75% PVC, 3% PU, 22% Poly

WIDTH: 140CM (+/- 5CM)

WEIGHT: 550GSM

MARTINDALE: 25,000 Rubs

WASHING INSTRUCTIONS: Clean with a damp cloth or sponge.

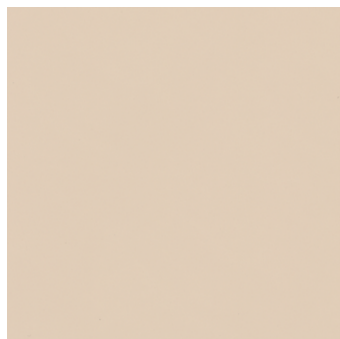


*Do not use solvent cleaning products / Wax polish or concentrated abrasives

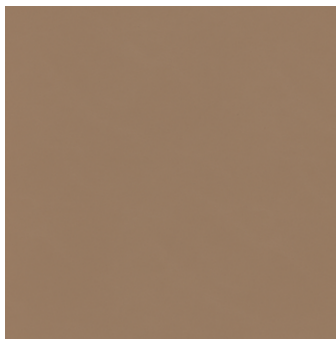
*Colour shades may tend to vary between different dye-lots & production batches

*Due to variations in computer screens, images presented are not 100% similar to actual fabrics

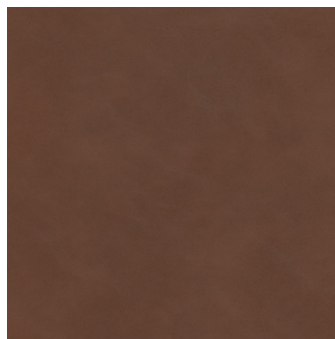
AVAILABLE COLOURS



SR NO - 08



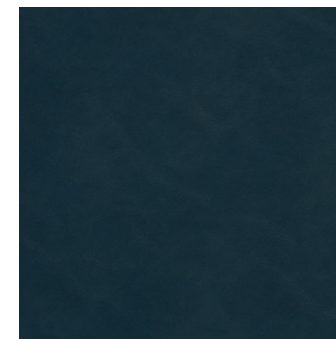
SR NO - 09



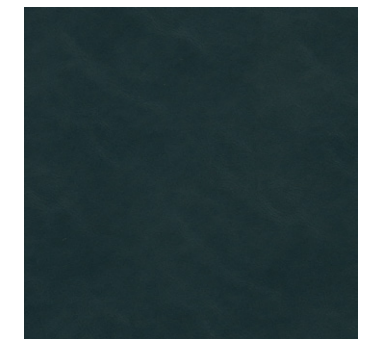
SR NO - 10



SR NO - 11



SR NO - 12



SR NO - 13



SR NO - 14

SUITABLE FOR: Upholstery 

COMPOSITION: 72% PVC, 2.7% PU, 19% Poly, 6.3% Cotton

WIDTH: 140CM (+/- 5CM)

WEIGHT: 550GSM

MARTINDALE: 25,000 Rubs

WASHING INSTRUCTIONS: Clean with a damp cloth or sponge.



*Do not use solvent cleaning products / Wax polish or concentrated abrasives

*Colour shades may tend to vary between different dye-lots & production batches

*Due to variations in computer screens, images presented are not 100% similar to actual fabrics

AVAILABLE COLOURS



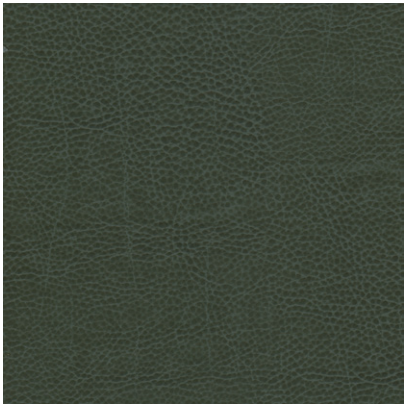
SR NO - 15



SR NO - 16



SR NO - 17



SR NO - 18

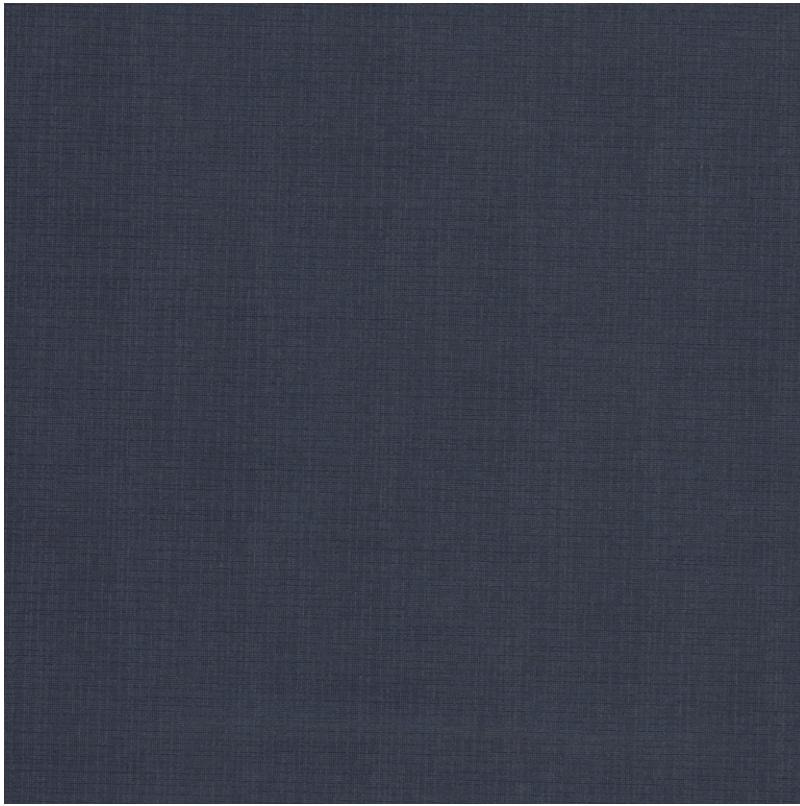


SR NO - 19



SR NO - 20





SR NO - 27

SUITABLE FOR: Upholstery 

COMPOSITION: 76% PVC, 2% PU, 22% Poly

WIDTH: 140CM (+/- 5CM)

WEIGHT: 520GSM

MARTINDALE: 25,000 Rubs

WASHING INSTRUCTIONS: Clean with a damp cloth or sponge.

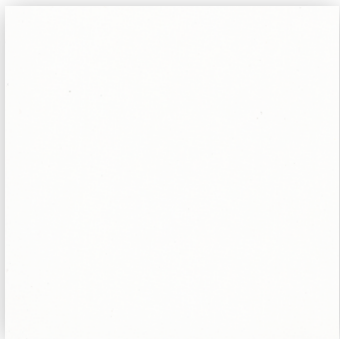


*Do not use solvent cleaning products / Wax polish or concentrated abrasives

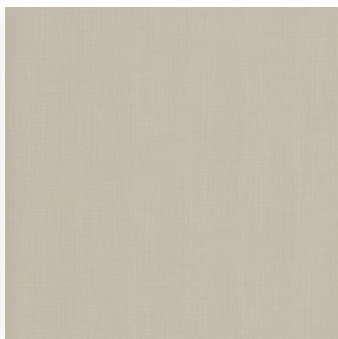
*Colour shades may tend to vary between different dye-lots & production batches

*Due to variations in computer screens, images presented are not 100% similar to actual fabrics

AVAILABLE COLOURS



SR NO - 21



SR NO - 22



SR NO - 23



SR NO - 24



SR NO - 25



SR NO - 26



SR NO - 28

SUITABLE FOR: Upholstery 

COMPOSITION: 80% PVC, 2% PU, 18% Poly

WIDTH: 140CM (+/- 5CM)

WEIGHT: 550GSM

MARTINDALE: 25,000 Rubs

WASHING INSTRUCTIONS: Clean with a damp cloth or sponge.

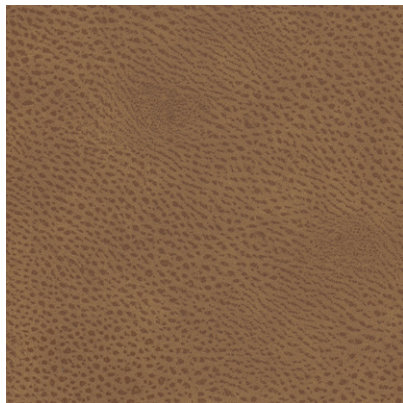


*Do not use solvent cleaning products / Wax polish or concentrated abrasives

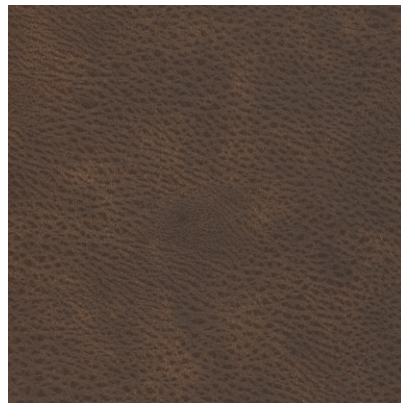
*Colour shades may tend to vary between different dye-lots & production batches

*Due to variations in computer screens, images presented are not 100% similar to actual fabrics

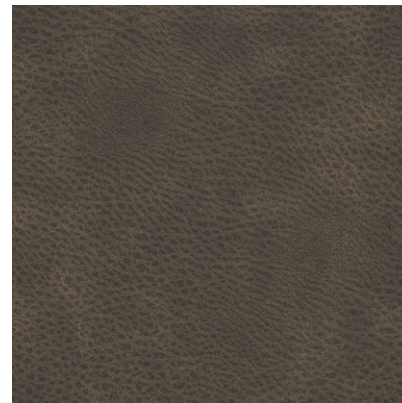
AVAILABLE COLOURS



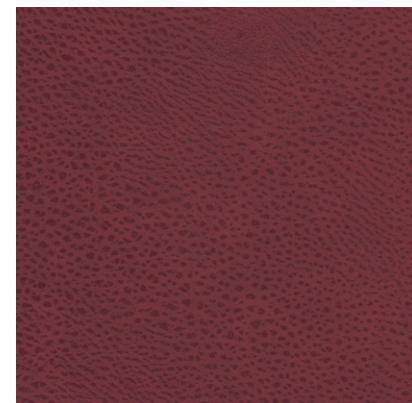
SR NO - 29



SR NO - 30



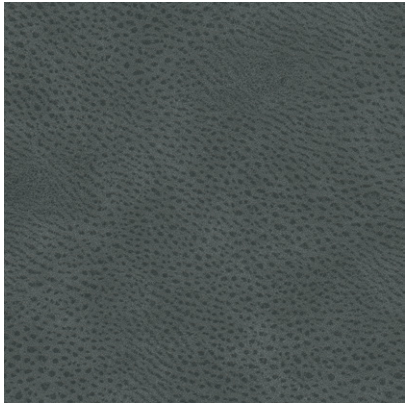
SR NO - 31



SR NO - 32



SR NO - 33



SR NO - 34



SR NO - 35





SR NO - 36

SUITABLE FOR: Upholstery 

COMPOSITION: 78% PVC, 22% Poly

WIDTH: 140CM (+/- 5CM)

WEIGHT: 450GSM

MARTINDALE: 25,000 Rubs

WASHING INSTRUCTIONS: Clean with a damp cloth or sponge.



*Do not use solvent cleaning products / Wax polish or concentrated abrasives

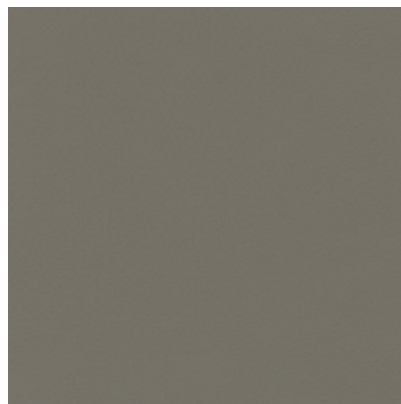
*Colour shades may tend to vary between different dye-lots & production batches

*Due to variations in computer screens, images presented are not 100% similar to actual fabrics

AVAILABLE COLOURS



SR NO - 37



SR NO - 38



SR NO - 39



SR NO - 40



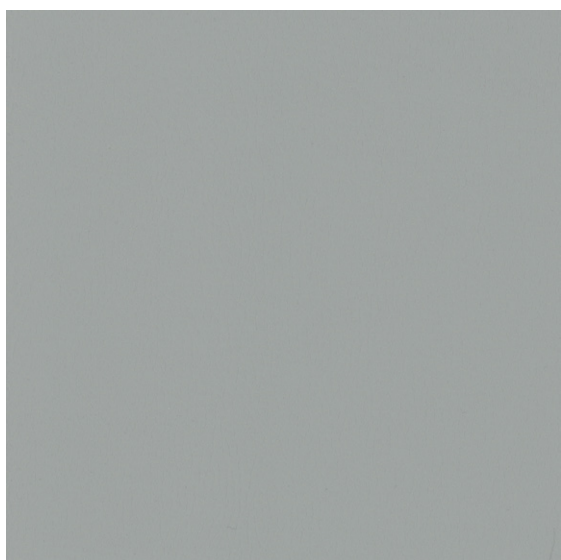
SR NO - 41



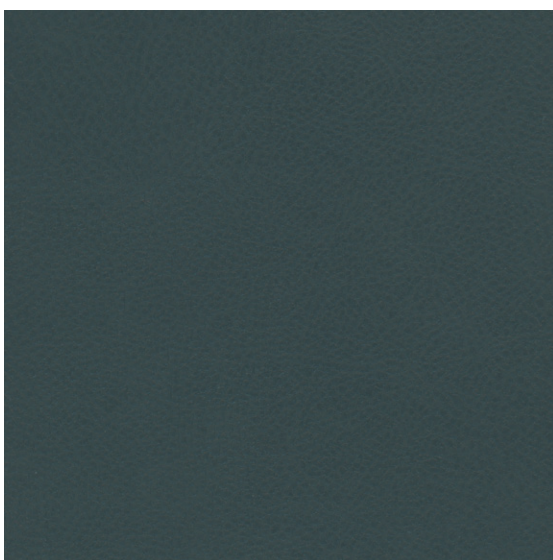
SR NO - 42



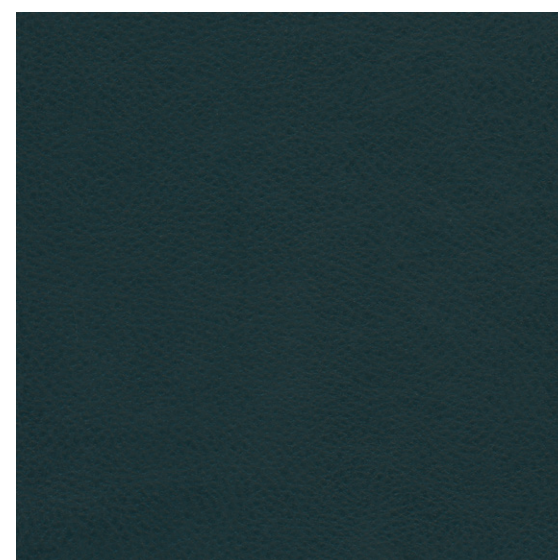
SR NO - 43



SR NO - 44



SR NO - 45



SR NO - 46



SR NO - 47

SUITABLE FOR: Upholstery 

COMPOSITION: 75% PVC, 5% PU, 20% Poly

WIDTH: 140CM (+/- 5CM)

WEIGHT: 600GSM

MARTINDALE: 25,000 Rubs

WASHING INSTRUCTIONS: Clean with a damp cloth or sponge.



*Do not use solvent cleaning products / Wax polish or concentrated abrasives

*Colour shades may tend to vary between different dye-lots & production batches

*Due to variations in computer screens, images presented are not 100% similar to actual fabrics

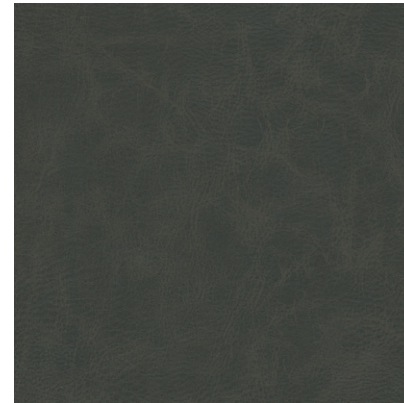
AVAILABLE COLOURS



SR NO - 48



SR NO - 49



SR NO - 50



SR NO - 51



SR NO - 52

SUITABLE FOR: Upholstery 

COMPOSITION: 82.2% PVC, 2.5% PU, 15.3% Poly

WIDTH: 140CM (+/- 5CM)

WEIGHT: 550GSM

MARTINDALE: 25,000 Rubs

WASHING INSTRUCTIONS: Clean with a damp cloth or sponge.

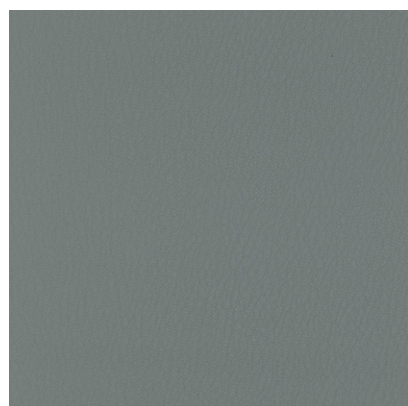


*Do not use solvent cleaning products / Wax polish or concentrated abrasives

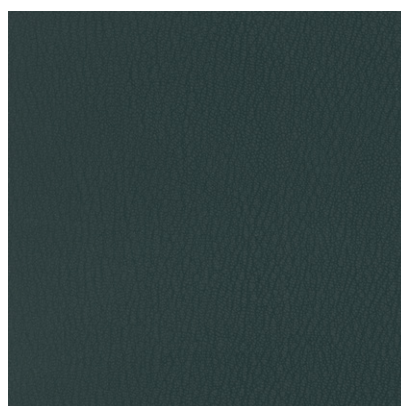
*Colour shades may tend to vary between different dye-lots & production batches

*Due to variations in computer screens, images presented are not 100% similar to actual fabrics

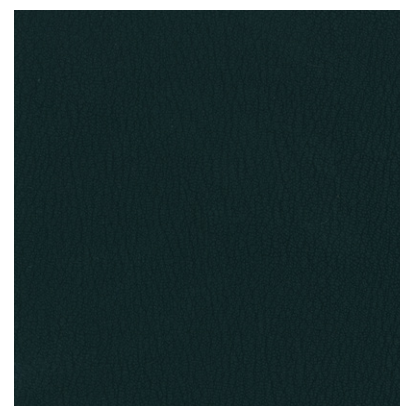
AVAILABLE COLOURS



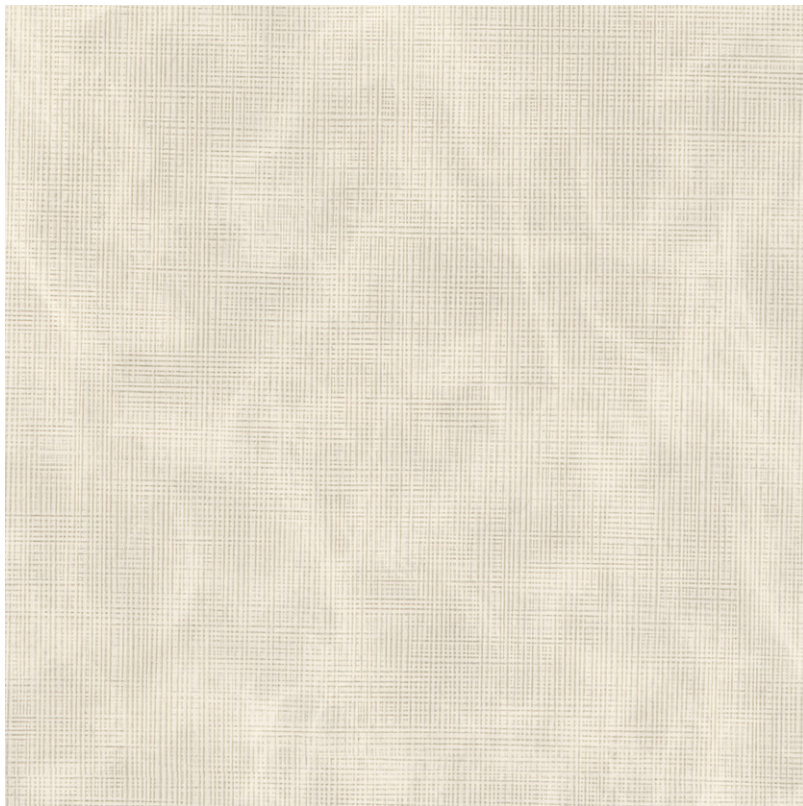
SR NO - 53



SR NO - 54



SR NO - 55



SR NO - 56

SUITABLE FOR: Upholstery 

COMPOSITION: 85% PVC, 3% PU, 12% Poly

WIDTH: 140CM (+/- 5CM)

WEIGHT: 500GSM

MARTINDALE: 25,000 Rubs

WASHING INSTRUCTIONS: Clean with a damp cloth or sponge.



*Do not use solvent cleaning products / Wax polish or concentrated abrasives

*Colour shades may tend to vary between different dye-lots & production batches

*Due to variations in computer screens, images presented are not 100% similar to actual fabrics

AVAILABLE COLOURS



SR NO - 57



SR NO - 58



SR NO - 59



SR NO - 60

U

ULTRA FABRICS

EST. 1990

ULTRA FURNISHING FABRICS FZCO

Unit 262. Dubai Textile City
Al Warsan 1, Dubai, UAE

Follow our socials
ultrafabrics.ae



www.ultrafabrics.ae