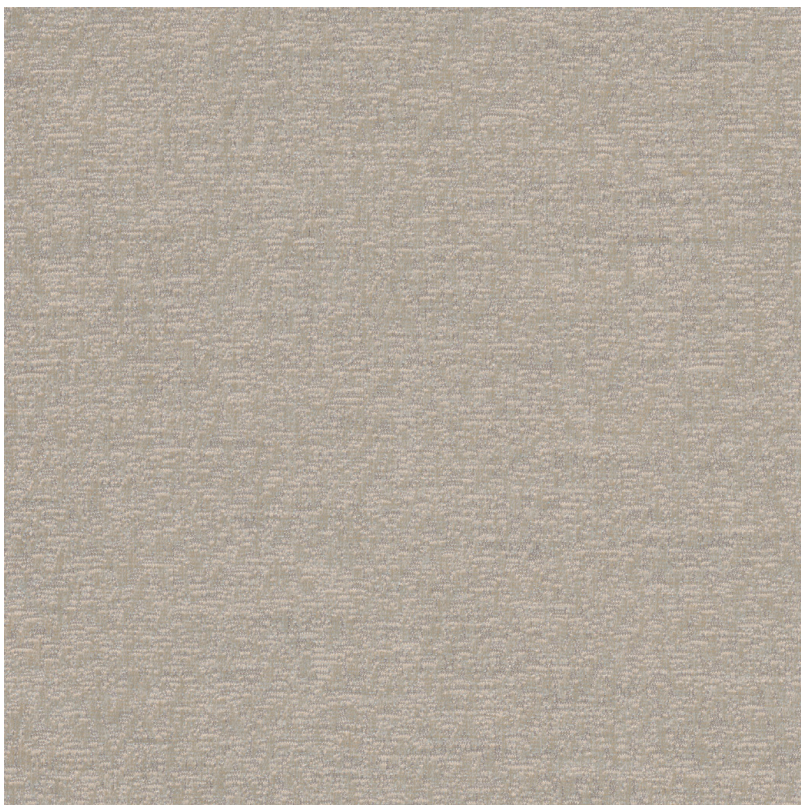


# SCINTILLA

CAT NO. 1351

This collection for drapery & soft upholstery fabrics gleams with bliss. The curtain and cushion fabrics are a masterclass of lurex yarns woven through jacquards of gold, blue, and silver. The range of these patterns extends from the wavering of ocean water, to lithe trickles of rainfall. These designs can affirm to rustic and metallic interiors.





**SUITABLE FOR:** Drapery & Soft Upholstery  

**COMPOSITION:** 66% Poly Fil, 33% Linen & 1% Lycra

**WIDTH:** 140CM (+/-5CM)

**WEIGHT:** 207.64GSM

**VERTICAL DESIGN REPEAT:** 11.96CM

**HORIZONTAL DESIGN REPEAT:** 27.71CM

**WASHING INSTRUCTIONS:** (Dry Clean Only)      

\*Colour shades may tend to vary between different dye-lots & production batches

\*Due to variations in computer screens, images presented are not 100% similar to actual fabrics

1351 - 01

AVAILABLE COLOURS



1351 - 12



1351 - 23



1351 - 34





**SUITABLE FOR:** Drapery & Soft Upholstery  

**COMPOSITION:** 24% Poly Fil, 42% Poly Spun & 34% Cotton Spun

**WIDTH:** 140CM (+/-5CM)

**WEIGHT:** 395.41GSM

**VERTICAL DESIGN REPEAT:** 65CM

**HORIZONTAL DESIGN REPEAT:** 70CM

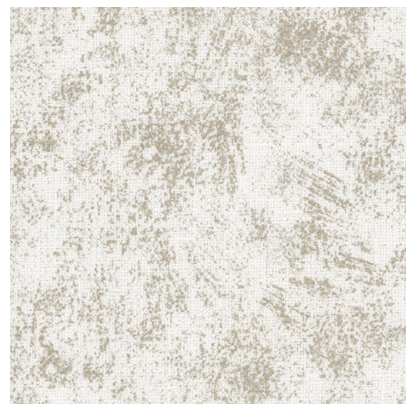
**WASHING INSTRUCTIONS:** (Dry Clean Only)      

\*Colour shades may tend to vary between different dye-lots & production batches

\*Due to variations in computer screens, images presented are not 100% similar to actual fabrics

1351 - 02

AVAILABLE COLOURS



1351 - 11



1351 - 25





**SUITABLE FOR:** Drapery & Soft Upholstery  

**COMPOSITION:** 93% Poly Fil & 7% Metallic

**WIDTH:** 140CM (+/-5CM)

**WEIGHT:** 194.15GSM

**VERTICAL DESIGN REPEAT:** 35.5CM

**HORIZONTAL DESIGN REPEAT:** 35.5CM

**WASHING INSTRUCTIONS:** (Dry Clean Only)      

\*Colour shades may tend to vary between different dye-lots & production batches

\*Due to variations in computer screens, images presented are not 100% similar to actual fabrics

1351 - 03

AVAILABLE COLOURS



1351 - 15



1351 - 18



1351 - 24



1351 - 28





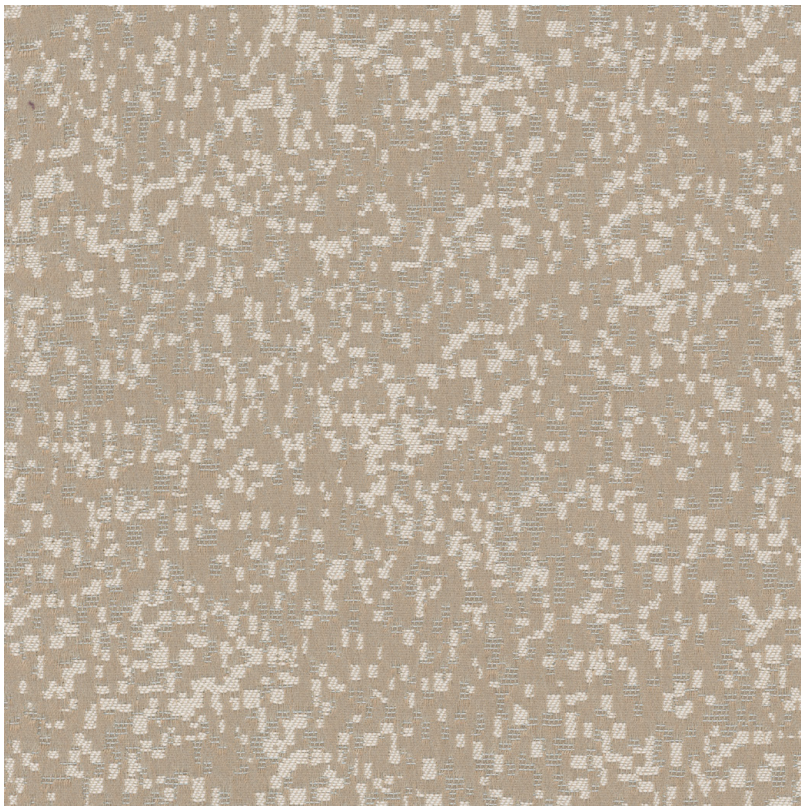
1351 - 31



1351 - 40







**SUITABLE FOR:** Drapery & Soft Upholstery  

**COMPOSITION:** 95% Poly Fil & 5% Metallic

**WIDTH:** 140CM (+/-5CM)

**WEIGHT:** 213.42GSM

**VERTICAL DESIGN REPEAT:** 24CM

**HORIZONTAL DESIGN REPEAT:** 28.7CM

**WASHING INSTRUCTIONS:** (Dry Clean Only)      

\*Colour shades may tend to vary between different dye-lots & production batches

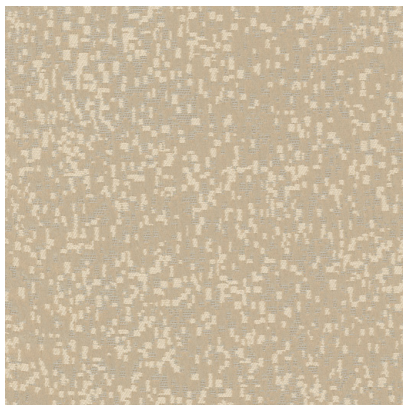
\*Due to variations in computer screens, images presented are not 100% similar to actual fabrics

1351 - 04

AVAILABLE COLOURS



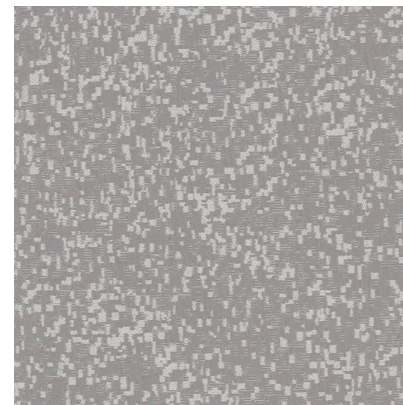
1351 - 16



1351 - 20



1351 - 27



1351 - 32



1351 - 41





**SUITABLE FOR:** Drapery & Soft Upholstery  

**COMPOSITION:** 77% Poly Fil, 22% Cotton Spun & 1% Lycra

**WIDTH:** 140CM (+/-5CM)

**WEIGHT:** 240.84GSM

**VERTICAL DESIGN REPEAT:** 46.67CM

**HORIZONTAL DESIGN REPEAT:** 59CM

**WASHING INSTRUCTIONS:** (Dry Clean Only)      

\*Colour shades may tend to vary between different dye-lots & production batches

\*Due to variations in computer screens, images presented are not 100% similar to actual fabrics

1351 - 05

---

NO AVAILABLE COLOURS

---





1351 - 06

**SUITABLE FOR:** Drapery & Soft Upholstery  

**COMPOSITION:** 97% Poly Fil & 3% Metallic

**WIDTH:** 140CM (+/-5CM)

**WEIGHT:** 205.21GSM

**VERTICAL DESIGN REPEAT:** 12CM

**HORIZONTAL DESIGN REPEAT:** 12CM

**WASHING INSTRUCTIONS:** (Dry Clean Only)      

\*Colour shades may tend to vary between different dye-lots & production batches

\*Due to variations in computer screens, images presented are not 100% similar to actual fabrics

---

AVAILABLE COLOURS

---



1351 - 14



1351 - 19

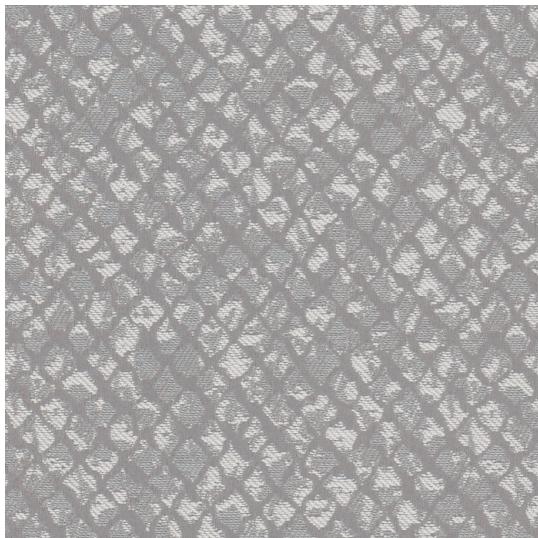


1351 - 26



1351 - 29





1351 - 33



1351 - 39







**SUITABLE FOR:** Drapery & Blinds 

**COMPOSITION:** 74% Poly Fil & 26% Poly Spun

**WIDTH:** 300CM

**WEIGHT:** 71.12GSM

**VERTICAL DESIGN REPEAT:** Nil

**HORIZONTAL DESIGN REPEAT:** Nil

**WASHING INSTRUCTIONS:** (Dry Clean Only)     

\*Colour shades may tend to vary between different dye-lots & production batches

\*Due to variations in computer screens, images presented are not 100% similar to actual fabrics

1351 - 07

---

AVAILABLE COLOURS

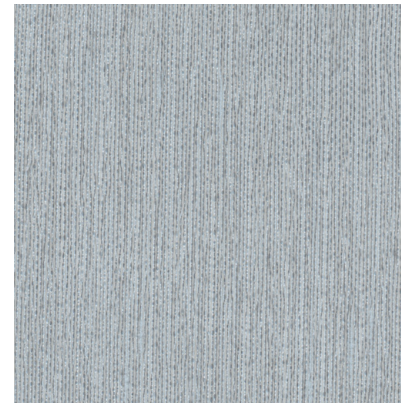
---



1351 - 08



1351 - 09



1351 - 10





**SUITABLE FOR:** Drapery & Soft Upholstery  

**COMPOSITION:** Polyester Rayon Natural Fibre

**WIDTH:** 140CM (+/-5CM)

**WEIGHT:** 213.14GSM

**VERTICAL DESIGN REPEAT:** 24CM

**HORIZONTAL DESIGN REPEAT:** 49.5CM

**WASHING INSTRUCTIONS:** (Dry Clean Only)      

\*Colour shades may tend to vary between different dye-lots & production batches

\*Due to variations in computer screens, images presented are not 100% similar to actual fabrics

1351 - 13

AVAILABLE COLOURS



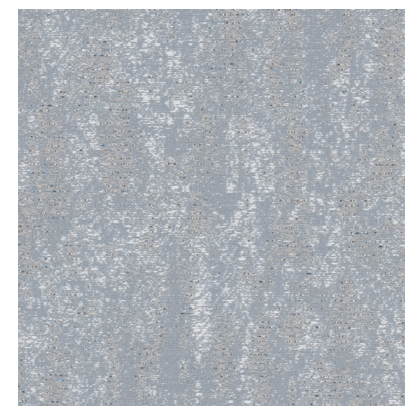
1351 - 17



1351 - 30



1351 - 35



1351 - 38





**SUITABLE FOR:** Drapery & Soft Upholstery  

**COMPOSITION:** 77% Poly Fil, 22% Cotton Spun & 1% Lycra

**WIDTH:** 140CM (+/-5CM)

**WEIGHT:** 240.84GSM

**VERTICAL DESIGN REPEAT:** 46.67CM

**HORIZONTAL DESIGN REPEAT:** 59CM

**WASHING INSTRUCTIONS:** (Dry Clean Only)      

\*Colour shades may tend to vary between different dye-lots & production batches

\*Due to variations in computer screens, images presented are not 100% similar to actual fabrics

1351 - 21

AVAILABLE COLOURS



1351 - 37





**SUITABLE FOR:** Drapery & Soft Upholstery  

**COMPOSITION:** 99% Poly Fil & 1% Lycra

**WIDTH:** 140CM (+/-5CM)

**WEIGHT:** 214.5GSM

**VERTICAL DESIGN REPEAT:** 70CM

**HORIZONTAL DESIGN REPEAT:** 70CM

**WASHING INSTRUCTIONS:** (Dry Clean Only)      

\*Colour shades may tend to vary between different dye-lots & production batches

\*Due to variations in computer screens, images presented are not 100% similar to actual fabrics

1351 - 22

---

AVAILABLE COLOURS

---



1351 - 36





ULTRA FABRICS

EST. 1990

ULTRA FURNISHING FABRICS FZCO

Unit 262. Dubai Textile City  
Al Warsan 1, Dubai, UAE

Follow our socials  
[ultrafabrics.ae](http://ultrafabrics.ae)



[www.ultrafabrics.ae](http://www.ultrafabrics.ae)