

EDIT III

CAT NO. 1350

With over 12 upholstery fabrics shades and 8 sofa fabrics textures, Edit III continues our Edit line of sofa fabrics for contemporary decor. This collection of upholstery fabrics contains porous weaves of woolly bouclé fabrics, dyed in colours of soot & snow. Here you'll find vivid hues of teal, garnet, and cinnamon, applied upon textures of jute, scorched chenille fabric and ribbed cotton fabric. This is the definitive collection for interior designers that dare to be original.





SUITABLE FOR: Upholstery 

COMPOSITION: 31% Poly Fil, 47% Viscose Spun, 22% Cotton Spun

WIDTH: 140CM (+/- 5CM)

WEIGHT: 432.71GSM

VERTICAL DESIGN REPEAT: Nil

HORIZONTAL DESIGN REPEAT: Nil

MARTINDALE: 14,000 Rubs

WASHING INSTRUCTIONS: (Dry Clean Only)      

*Colour shades may tend to vary between different dye-lots & production batches

*Due to variations in computer screens, images presented are not 100% similar to actual fabrics

SR NO - 01

AVAILABLE COLOURS



SR NO - 38



SR NO - 56



SUITABLE FOR: Upholstery 

COMPOSITION: 85% Poly Fil, 5% Poly Spun, 10% Cotton Spun

WIDTH: 140CM (+/- 5CM)

WEIGHT: 780.41GSM

VERTICAL DESIGN REPEAT: Nil

HORIZONTAL DESIGN REPEAT: Nil

MARTINDALE: 35,000 Rubs

WASHING INSTRUCTIONS: (Dry Clean Only)     

*Colour shades may tend to vary between different dye-lots & production batches

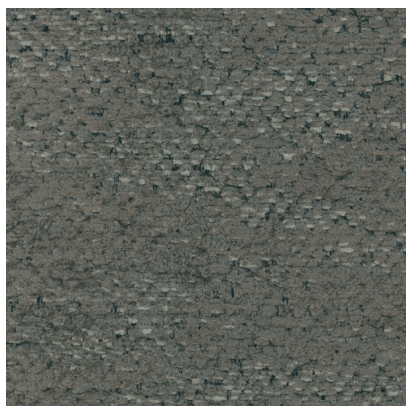
*Due to variations in computer screens, images presented are not 100% similar to actual fabrics

SR NO - 02

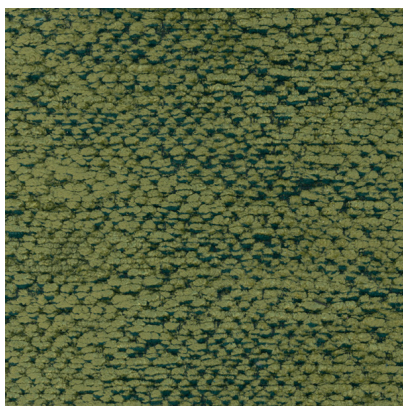
AVAILABLE COLOURS



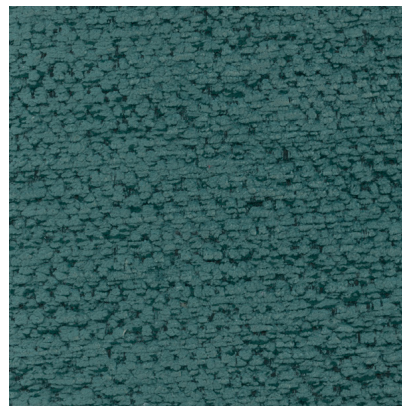
SR NO - 13



SR NO - 17



SR NO - 28



SR NO - 33



SR NO - 60



SR NO - 03

SUITABLE FOR: Upholstery 

COMPOSITION: 69% Poly Fil, 31% Poly Spun

WIDTH: 140CM (+/- 5CM)

WEIGHT: 515.34GSM

VERTICAL DESIGN REPEAT: Nil

HORIZONTAL DESIGN REPEAT: Nil

MARTINDALE: 30,000 Rubs

WASHING INSTRUCTIONS: (Dry Clean Only)      

*Colour shades may tend to vary between different dye-lots & production batches

*Due to variations in computer screens, images presented are not 100% similar to actual fabrics

AVAILABLE COLOURS



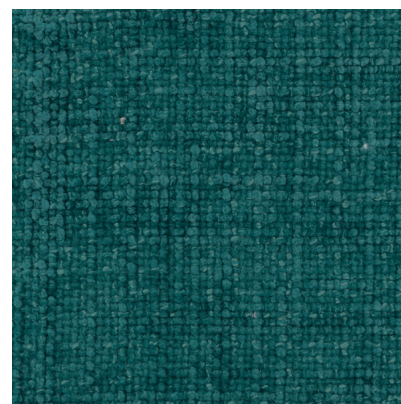
SR NO - 08



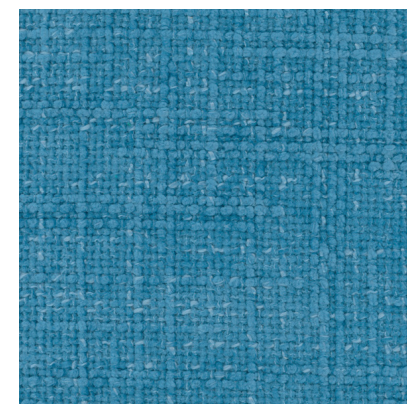
SR NO - 09



SR NO - 18



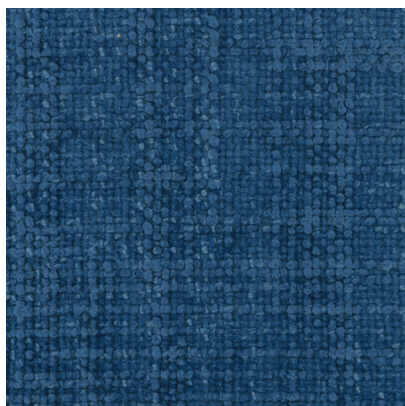
SR NO - 30



SR NO - 40



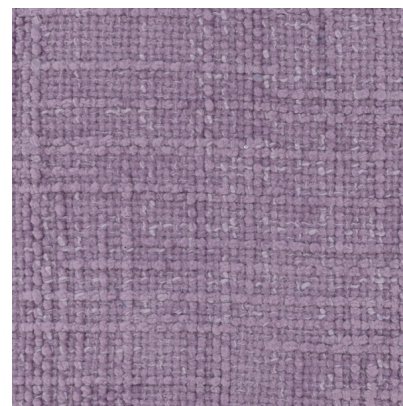
AVAILABLE COLOURS



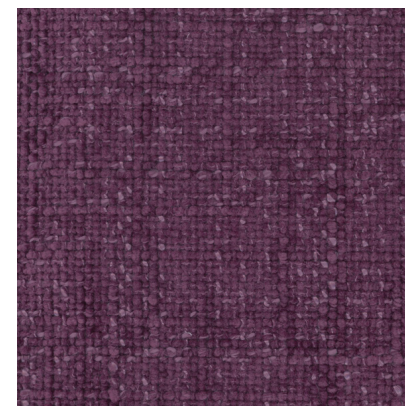
SR NO - 43



SR NO - 48



SR NO - 50



SR NO - 53



SR NO - 04

SUITABLE FOR: Upholstery 

COMPOSITION: 64% Poly Fil, 16% Poly Spun, 20% Viscose Spun

WIDTH: 140CM (+/- 5CM)

WEIGHT: 611.83GSM

VERTICAL DESIGN REPEAT: Nil

HORIZONTAL DESIGN REPEAT: Nil

MARTINDALE: 25,000 Rubs

WASHING INSTRUCTIONS: (Dry Clean Only)      

*Colour shades may tend to vary between different dye-lots & production batches

*Due to variations in computer screens, images presented are not 100% similar to actual fabrics

AVAILABLE COLOURS



SR NO - 10



SR NO - 16



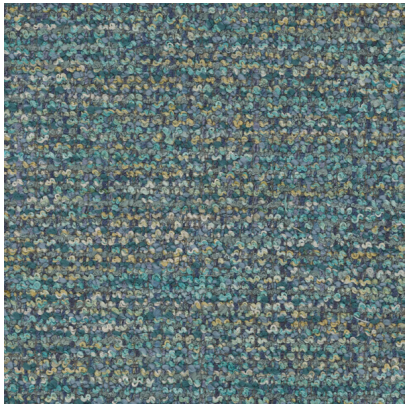
SR NO - 20



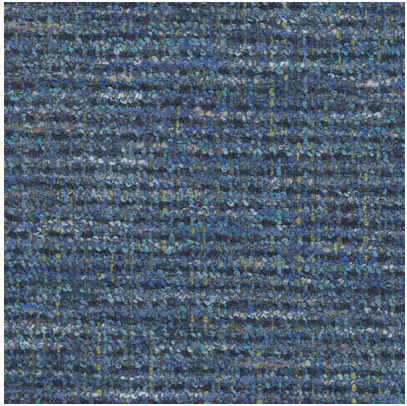
SR NO - 24



SR NO - 34



SR NO - 37



SR NO - 44



SR NO - 59





SUITABLE FOR: Upholstery 

COMPOSITION: 26% Poly Fil, 74% Poly Spun

WIDTH: 140CM (+/- 5CM)

WEIGHT: 510.23GSM

VERTICAL DESIGN REPEAT: Nil

HORIZONTAL DESIGN REPEAT: Nil

MARTINDALE: 35,000 Rubs

WASHING INSTRUCTIONS: (Dry Clean Only)     

*Colour shades may tend to vary between different dye-lots & production batches

*Due to variations in computer screens, images presented are not 100% similar to actual fabrics

SR NO - 05

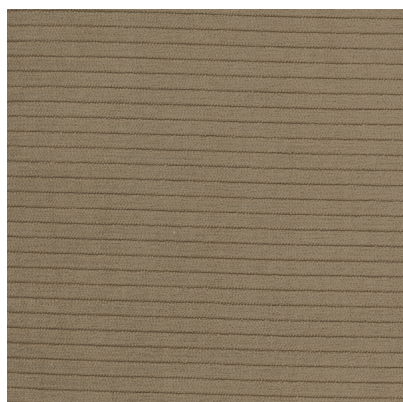
AVAILABLE COLOURS



SR NO - 06



SR NO - 12



SR NO - 21



SR NO - 25



SR NO - 27



SR NO - 29



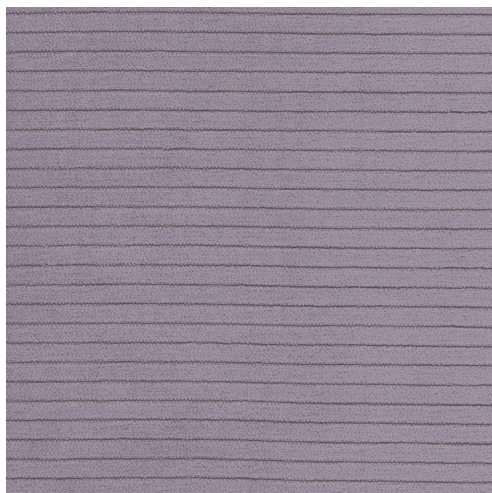
SR NO - 35



SR NO - 39



SR NO - 45



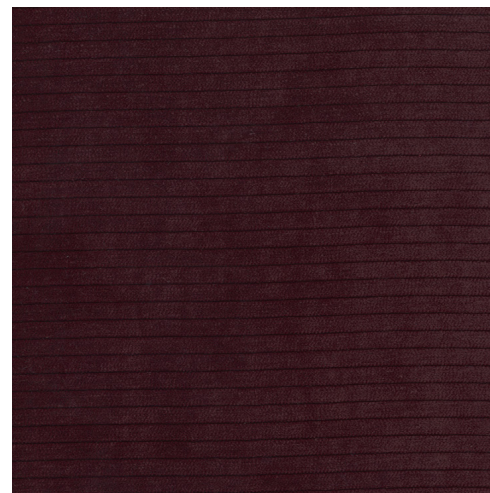
SR NO - 51



SR NO - 52



SR NO - 58



SR NO - 61



SUITABLE FOR: Upholstery 

COMPOSITION: 65% Poly Fil, 35% Cotton Spun

WIDTH: 140CM (+/- 5CM)

WEIGHT: 723.93GSM

VERTICAL DESIGN REPEAT: Nil

HORIZONTAL DESIGN REPEAT: Nil

MARTINDALE: 35,000 Rubs

WASHING INSTRUCTIONS: (Dry Clean Only)     

*Colour shades may tend to vary between different dye-lots & production batches

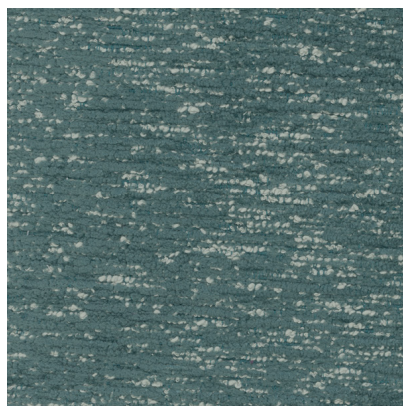
*Due to variations in computer screens, images presented are not 100% similar to actual fabrics

SR NO - 07

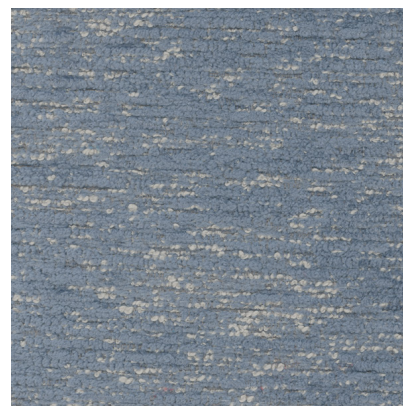
AVAILABLE COLOURS



SR NO - 15



SR NO - 32



SR NO - 47



SR NO - 63



SUITABLE FOR: Upholstery 

COMPOSITION: 44% Poly Fil, 18% Poly Spun, 38% Cotton Spun

WIDTH: 140CM (+/- 5CM)

WEIGHT: 429.73GSM

VERTICAL DESIGN REPEAT: Nil

HORIZONTAL DESIGN REPEAT: Nil

MARTINDALE: 16,000 Rubs

WASHING INSTRUCTIONS: (Dry Clean Only)     

*Colour shades may tend to vary between different dye-lots & production batches

*Due to variations in computer screens, images presented are not 100% similar to actual fabrics

SR NO - 11

AVAILABLE COLOURS



SR NO - 22



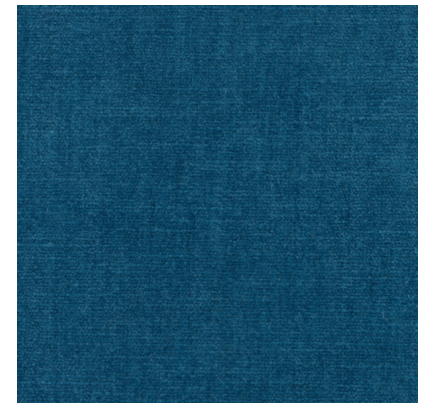
SR NO - 26



SR NO - 31



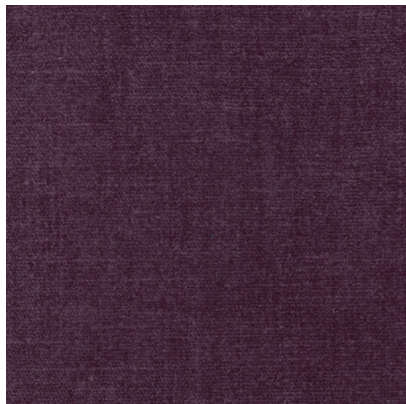
SR NO - 36



SR NO - 42



SR NO - 49



SR NO - 54



SR NO - 55



SR NO - 57



SR NO - 62



SUITABLE FOR: Upholstery 

COMPOSITION: 59% Poly Fil, 28% Poly Spun, 13% Viscose Spun

WIDTH: 140CM (+/- 5CM)

WEIGHT: 307.64GSM

VERTICAL DESIGN REPEAT: Nil

HORIZONTAL DESIGN REPEAT: Nil

MARTINDALE: 18,000 Rubs

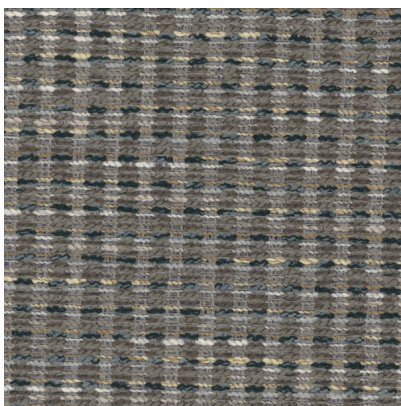
WASHING INSTRUCTIONS: (Dry Clean Only)      

*Colour shades may tend to vary between different dye-lots & production batches

*Due to variations in computer screens, images presented are not 100% similar to actual fabrics

SR NO - 14

AVAILABLE COLOURS



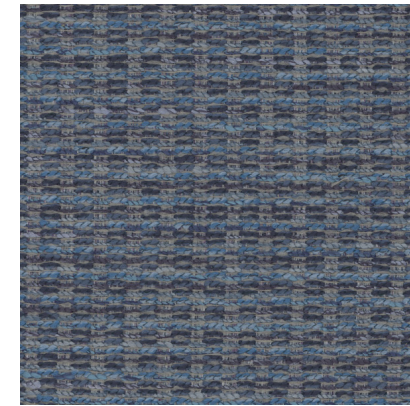
SR NO - 19



SR NO - 23



SR NO - 41



SR NO - 46



ULTRA FABRICS

EST. 1990

ULTRA FURNISHING FABRICS FZCO

Unit 262. Dubai Textile City
Al Warsan 1, Dubai, UAE

Follow our socials
ultrafabrics.ae



www.ultrafabrics.ae